

## KSHC27 Hex Channel

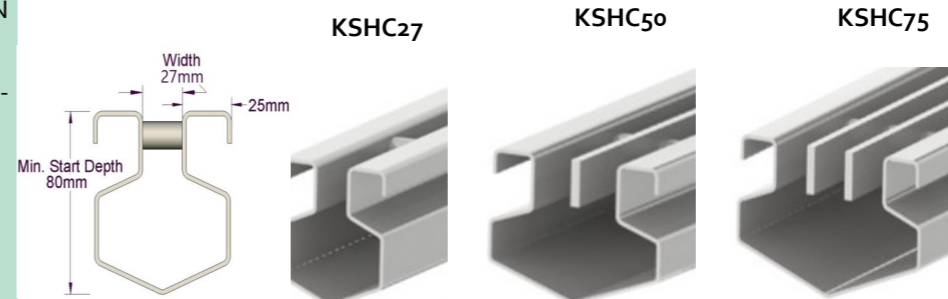
The KSHC27 channel is a hexagonal channel often used to reduce costs by eliminating the need for a channel grating. Some clients refer to this as a slot channel—we reserve that term for urban streetscape slot drains

It is a strong channel and is still extensively used in **Food, Dairy, Beverage and Pharmaceutical factories** and is customisable in a huge variety of features. It is manufactured in grade **304 stainless** as standard, often used in grade 316 and size can be **customised** to suit any projects.

**Watertight connections** are made with either flange & gasket joints, or preparation for site welding.

### Features:

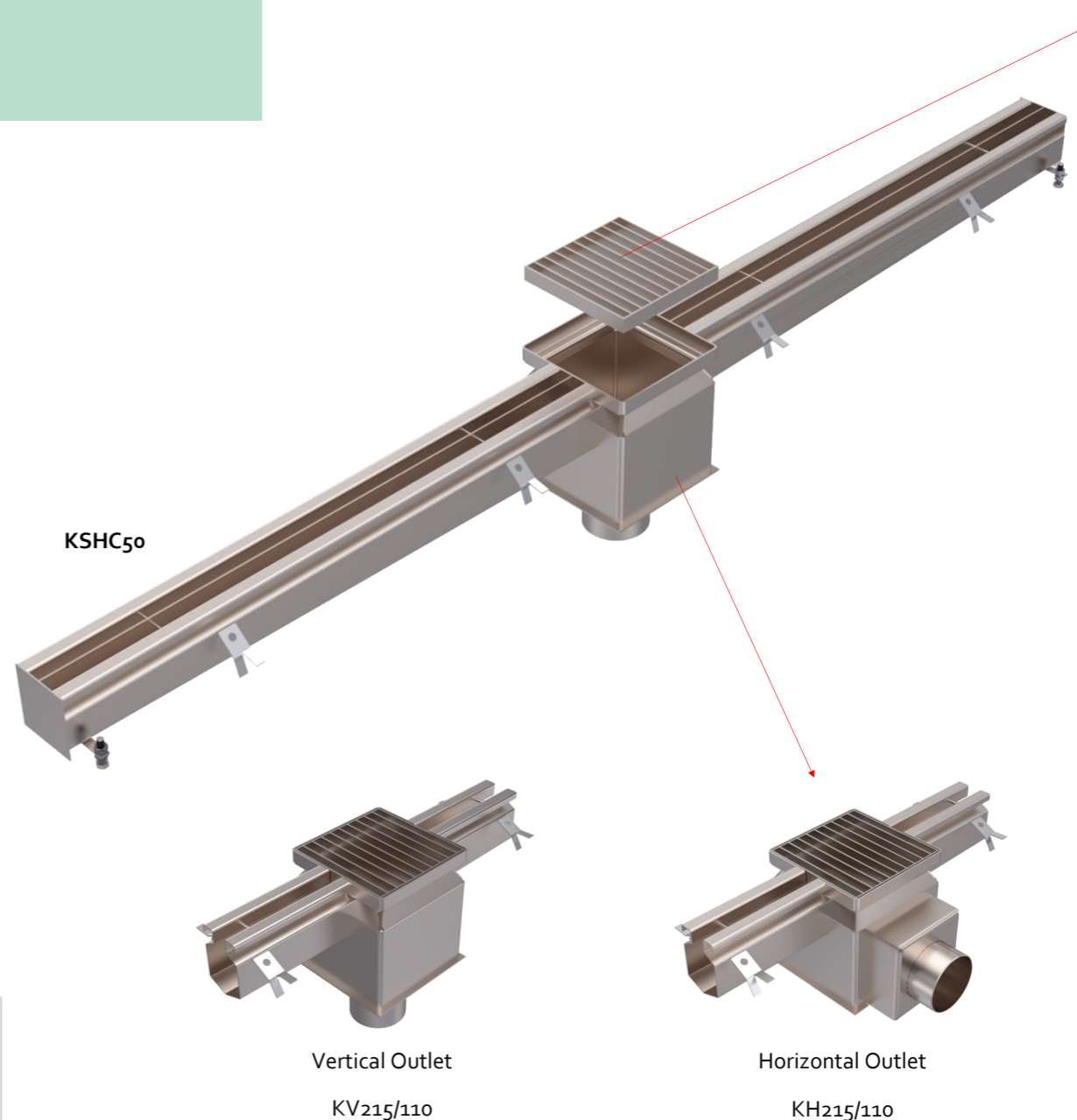
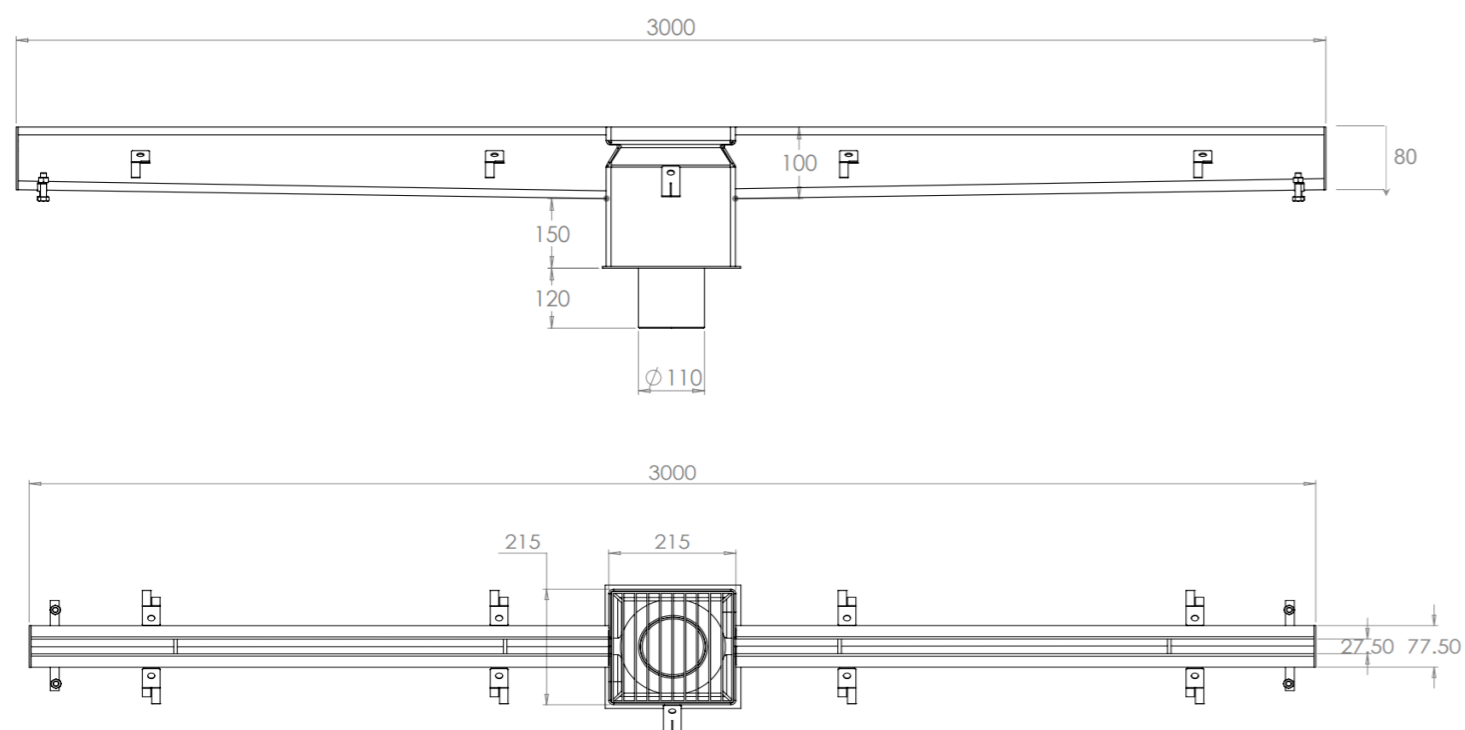
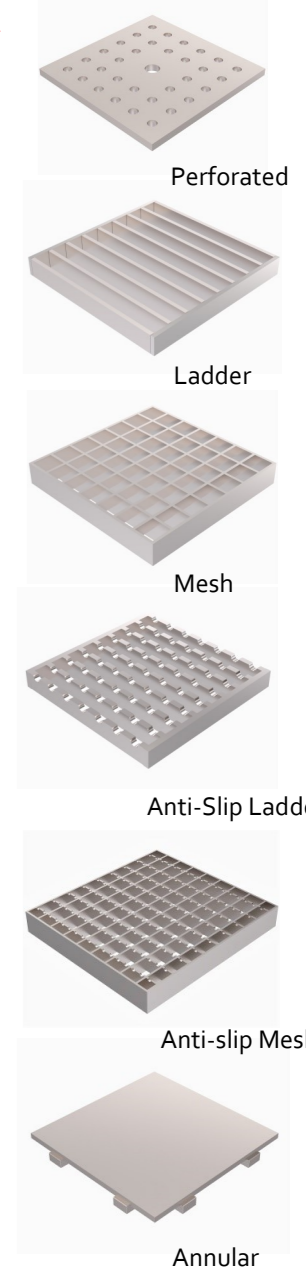
- Grade 304 (1.4301) or 316 (1.4401) Stainless Steel to BS EN 10088
- 27mm wide Slot as standard with 25mm turnout and turn-down each side
- 77mm Outside Edge to Outside Edge
- Used with either Trapped 110mm or 160mm gully outlet
- 80mm start depth
- 1:150 (0.67%) pre-sloped fall built in
- Made to length – reduced joints



### LOADING CLASS

- Perforated = L15/R50/M125/N250
- Ladder = L15/R50/M125/N250
- Mesh = L15
- Anti-Slip Ladder = L15/R50/M125/N250
- Anti-Slip Mesh = L15
- Annular = L15/R50/M125/N250

### GRATING OPTIONS



Product Code	Min. start depth	Width	Outer Width	Outlet	Flow Rate
KSHC27/KV215-110	80	27	77	110	3.9 l/s
KSHC50/KV215-110	80	50	100	110	4.1 l/s
KSHC75/KV315-160	80	75	125	160	4.3 l/s

### Applications/Industries

- ◇ Industrial
- ◇ Food
- ◇ Dairy
- ◇ Beverage
- ◇ Meat
- ◇ Pharmaceutical

Specify: Kent Standard Hex Channel KSHC27/KV215/110; 3000mm length with Central Trapped Gully outlet; Grade 304 Stainless Steel; Grating will be Kent Ladder Grating; Load B125

(amend underlined words to suit project)

Made in IRELAND

### BS EN1433 Loading Class A15/ B125/ C250/ D400

Our internal channels can be subjected to very heavy loads but must have the correct heavy duty grating to achieve these loads. Suitable for factories.