

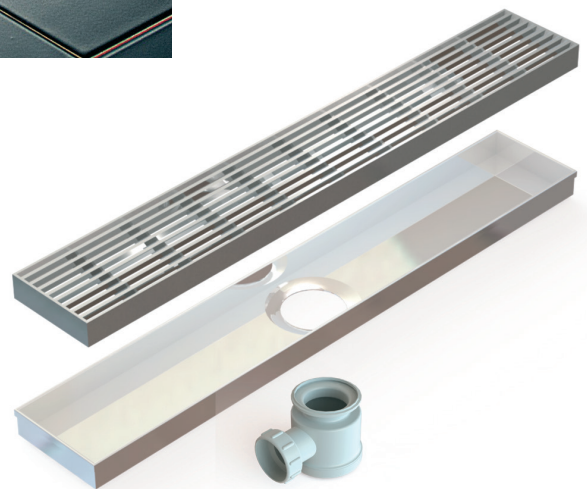
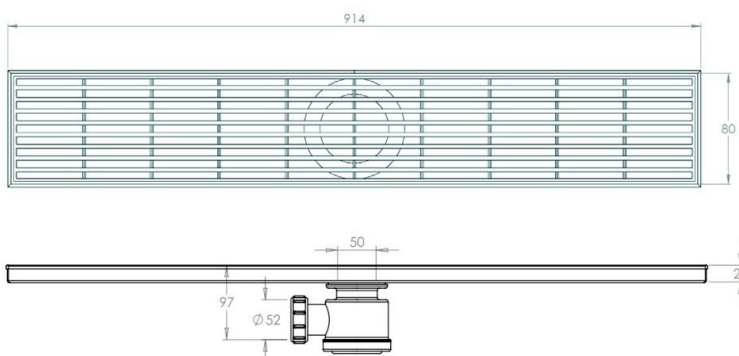
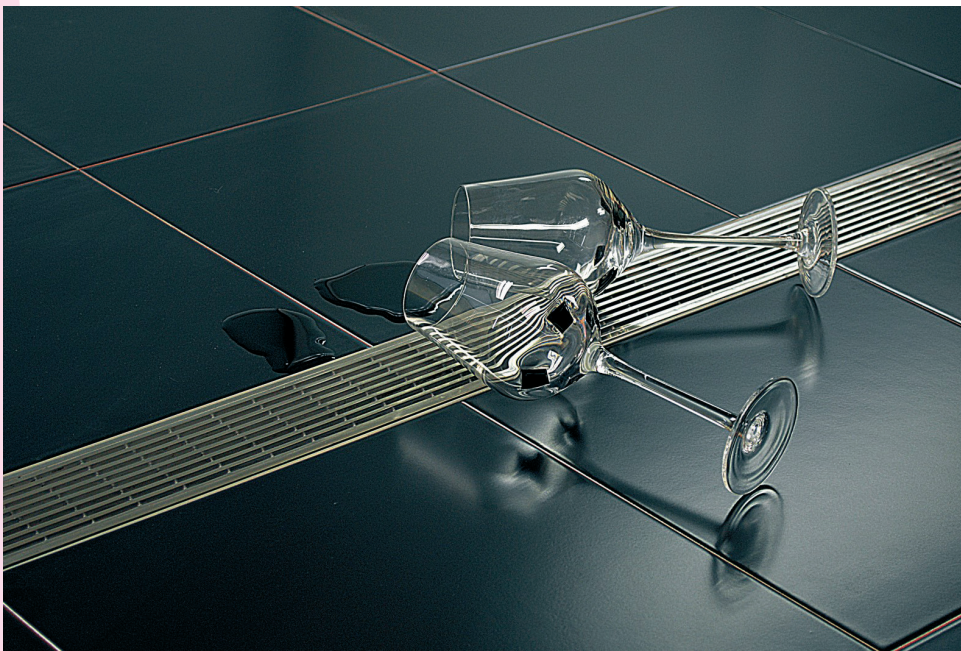
## KENT KLSD (HM) – Linear Shower Drain (Heelmesh)

The Kent Stainless Linear Shower Drain has been specifically designed for barefoot walk in residential shower areas, washrooms and wetrooms. The drain is made from **grade 316 stainless steel** and comes with 1 ½ BSP trapped side outlet as standard. This channel is available in 914mm lengths and this model comes with Kent Wedge Heelmesh Grating.

These wetroom channels are ex-stock in our Irish factory and offer excellent value for money. Due to their lightweight construction they can be air freighted with an 8-10 day delivery period.

### Features

- Grade 316 Stainless steel
- Easy to clean
- 1 ½" BSP PVC shower trap included
- Satin finish as standard
- Ex stock; spare parts also ex stock



| Product Code | Height | Length | Width | Outlet   | Flow Rate* |
|--------------|--------|--------|-------|----------|------------|
| KLSD(HM)     | 22mm   | 914mm  | 80mm  | 1.5" BSP | 0.4 l/s    |

Specify Kent Linear Shower Drain KLSD(HM). Grade 316 stainless steel complete with 1 ½" BSP PVC shower trap and wedge heelmesh grating.



BS EN1253 Class K3