

ANGLE FRAME TREE PIT

KATP1000/10



KENT ANGLE FRAME TREE PIT KATP1000/10

The Kent Angle Frame Tree Pit is our basic, neat and cost effective way of Clearly defining the break between paved areas and the soft landscape of the tree pit—or the resin bound gravel.

The polished edges at finished ground level define the edge of the resin bound surface. The same edge provides a 100mm deep straight edge to assist the pavers.

We extend this to 200mm high when a raised planter bed around the tree is required.

Features:

- Grade 316L Stainless Steel
- 10mm Thick
- Easy Assembly on Site



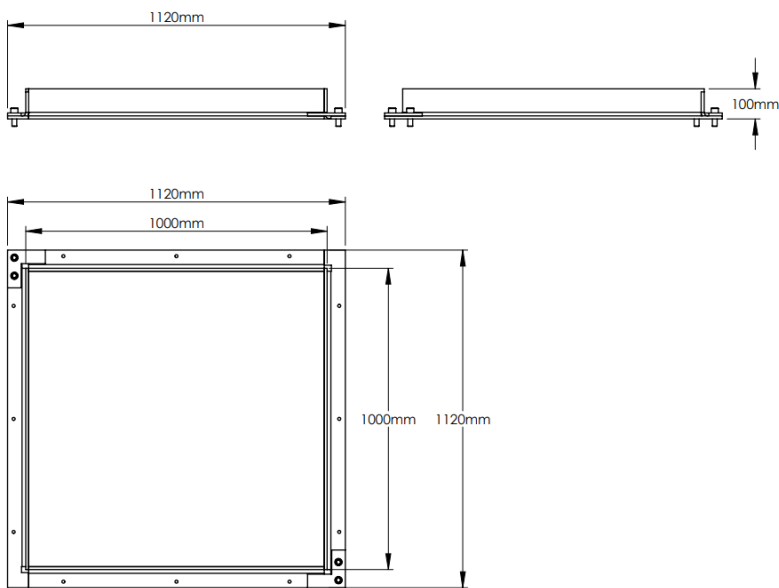
Bankside, London, UK

KENT ANGLE FRAME TREE PIT KATP1000/10

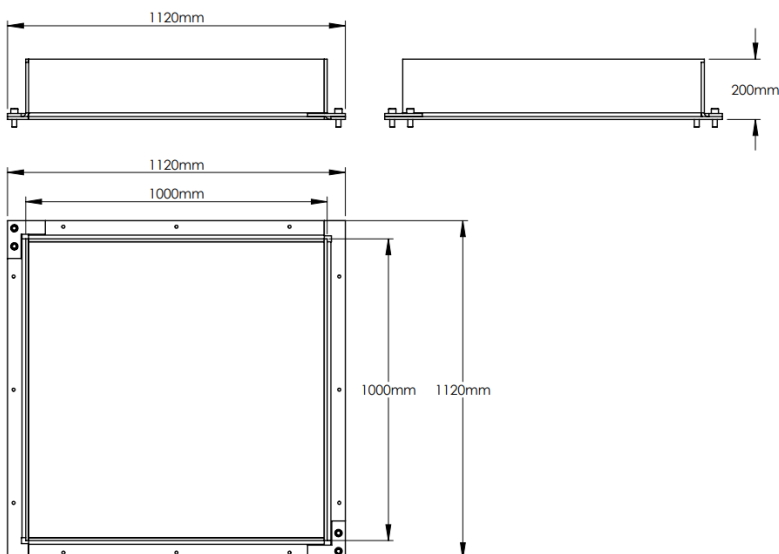
Product Dimensions

Product Code	Height	Length	Width	Thickness
Kent Angle Frame Tree Pit KATP1000/10(100)	100mm	1000mm	1000mm	10mm
Kent Angle Frame Tree Pit KATP1000/10(200)	200mm	1000mm	1000mm	10mm

Drawings



100mm deep—Flush with surface



200mm deep—100mm above surface

KENT ANGLE FRAME TREE PIT KATP1000/10

Specification

Specify:

Kent Angle Frame Tree Pit KATP1000/10; Height 100mm ; Length 1000mm ; Width 1000mm; Grade 316L Stainless Steel.

Choose your steel & Thickness

Grade 316 Stainless Steel

Grade 304 Stainless Steel

Pre-Weathered Corten Steel

Customise your size, or go
with our standard 1000mm x
1000mm



Kings Cross, London, UK



KENT ANGLE FRAME TREE PIT KATP1000/10

Finishes

These Planters can be manufactured from :

- Grade 316L Stainless Steel
- Grade 304L Stainless
- Powder Coated
- Pre-Weathered Corten Steel
- Faux Imitation Corten



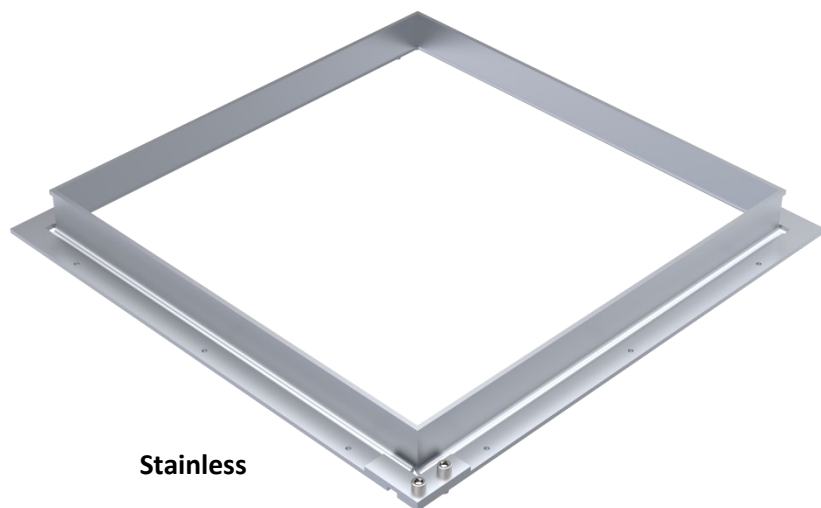
Click on Finish image



Satin Finish 320 Grit Polished



Pre-Weathered Corten



Stainless



CorTen

KENT ANGLE FRAME TREE PIT KATP1000/10

Maintenance

Stainless Steel Maintenance

Clean the stainless steel components using warm water with a mild detergent with a non-abrasive cloth or sponge. Heavier stains may require the use of a nylon-scouring pad or a stainless steel cleaner.

To remove paint or graffiti use a cloth and Alkaline or solvent paint strippers according to type of paint. In the case of a bead blasted finish, where abrasive cleaning is required, always use a random circular rubbing action with a cloth.

In the case of brushed finishes the surface consists of uniform fine 'scratches' running in one direction so where abrasive cleaning is required always use a straight back and forward rubbing action in the direction of the grain using soap and warm water.

Rust spots or 'tea stains' can occur on the surface of the material, these are normally caused by contamination from ordinary mild steel, particularly in areas where construction work has been undertaken. Such stains can be removed using Rust Remover 410.

In cases where the surface is severely stained because of severe environmental conditions or scratched due to misuse, it may still be possible to restore the original finish using chemicals such as Oxalic Acid solution. There are many stainless steel polishes available to enhance the surface finish.

Corten Steel Maintenance

Corten steel is similar in strength to Stainless Steel grade 304 and grade 316 – so similar thicknesses of edging can be interchanged on a project. There is a non-uniform patina on the surface that has a rust-like colour but in fact protects the steel below from corrosion. The patina makes it resistant to graffiti and stickers – and any future remedial work can disappear over time as the oxidation forms a new patina over these areas. As a result Corten should need no cleaning regime after installation.

A partner you can rely on



Earlsfort Terrace, Dublin, Ireland

Contact us

Phone: +353 53 914 3216

UK Freephone: 0800 376 8377

USA: 718 374 7391

Email: info@kentstainless.com

Address: Ardcavan, Wexford, Ireland, Y35 CRW2

