



**Kent**  
STAINLESS

11/2023

# BATTERSEA CORTEN PLANTER

KBP- 2000



**KENT BATTERSEA PLANTER - KBP- 2000**

The Kent Battersea Corten Planter KBP-2000 is made with 4mm thick steel to maximize vandal resistance. Along with this the Corten Steel is low maintenance due to the patina on the surface that gives the rust like appearance. The patina protects the steel underneath and is graffiti resistant as the patina forms a new layer due to oxidation. The Battersea Planter is 2000mm wide x 2000mm long and 900mm high, however, these measurements can be modified to requirement.

**Features:**

- Corten Steel
- Graffiti Resistant
- 4mm Thick Steel
- Low maintenance



**Can be easily moved using a forklift**



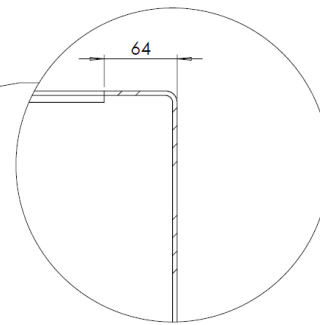
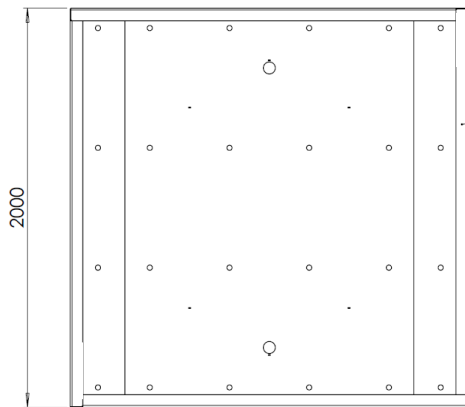
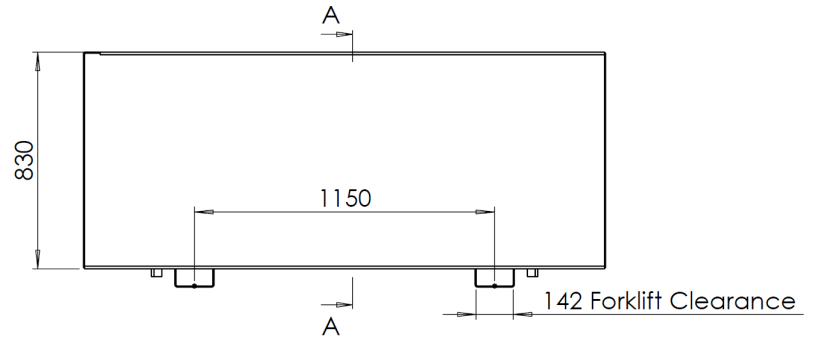
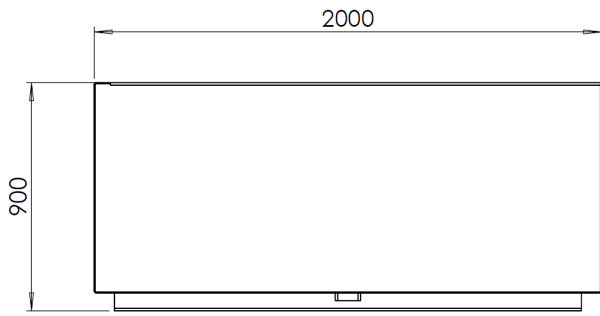


**KENT BATTERSEA PLANTER - KBP-2000**

**Product Dimensions**

Product Code	Height	Length	Width
Kent Battersea Planter KBP-2000	900mm	2000mm	2000mm

**Drawings**



The Top Edge has a 40mm Turn In



## Specification

### Specify:

*Kent Battersea Corten Planter KBP 2000;*

*L:2000mm, H:900mm, W:2000mm; Pre-Weathered Corten Steel; 4mmThick Wall;*

#### Choose your steel & Thickness

- Pre-Weathered Corten Steel
- Grade 304 Stainless steel
- Grade 316 Stainless steel
- Powder Coated
- Faux Imitation Corten

*Customise your size, or go with our standard 2000mm / 2000m Sizes*

#### Choose your Finish

- Bright Satin
- 320 Grit Satin Finish
- Bright Peened
- Shot Peened
- Tiger Bronze
- Imitation Corten
- Antique Copper
- Metallic Black



**Stainless**

**Faux Imitation Corten**

**Tiger Bronze**

## Finishes

These Planters can be manufactured from :

- Grade 316L Stainless Steel
- Grade 304L Stainless
- Powder Coated
- Pre-Weathered Corten Steel
- Faux Imitation Corten



*Bright Peened*



*Bright Satin*



*Satin Finish 320 Grit Polished*



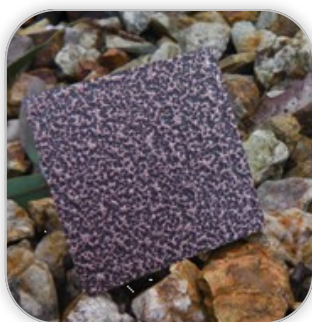
*Shot Peened*



*Tiger Bronze*



*Imitation Corten*



*Antique Copper*



*Metallic Black*



*Pre-Weathered Corten*



## Maintenance

### Stainless Steel Maintenance

Clean the stainless steel components using warm water with a mild detergent with a non-abrasive cloth or sponge. Heavier stains may require the use of a nylon-scouring pad or a stainless steel cleaner.

To remove paint or graffiti use a cloth and Alkaline or solvent paint strippers according to type of paint. In the case of a bead blasted finish, where abrasive cleaning is required, always use a random circular rubbing action with a cloth.

In the case of brushed finishes the surface consists of uniform fine 'scratches' running in one direction so where abrasive cleaning is required always use a straight back and forward rubbing action in the direction of the grain using soap and warm water.

Rust spots or 'tea stains' can occur on the surface of the material, these are normally caused by contamination from ordinary mild steel, particularly in areas where construction work has been undertaken. Such stains can be removed using Rust Remover 410.

In cases where the surface is severely stained because of severe environmental conditions or scratched due to misuse, it may still be possible to restore the original finish using chemicals such as Oxalic Acid solution. There are many stainless steel polishes available to enhance the surface finish.

### Corten Steel Maintenance

Corten steel is similar in strength to Stainless Steel grade 304 and grade 316 – so similar thicknesses of edging can be interchanged on a project. There is a non-uniform patina on the surface that has a rust-like colour but in fact protects the steel below from corrosion. The patina makes it resistant to graffiti and stickers – and any future remedial work can disappear over time as the oxidation forms a new patina over these areas. As a result Corten should need no cleaning regime after installation.

**A partner you can rely on**



**Contact us**

**Phone: +353 53 914 3216**

**UK Freephone: 0800 376 8377**

**USA: 718 374 7391**

**Email: [info@kentstainless.com](mailto:info@kentstainless.com)**

**Address: Ardcavan, Wexford, Ireland, Y35 CRW2**

