



Kent
STAINLESS

12/2023

BROADGATE CIRCULAR TREE GRILLE

KBCTG/900



BROADGATE CIRCULAR TREE GRILLE KBCTG/900

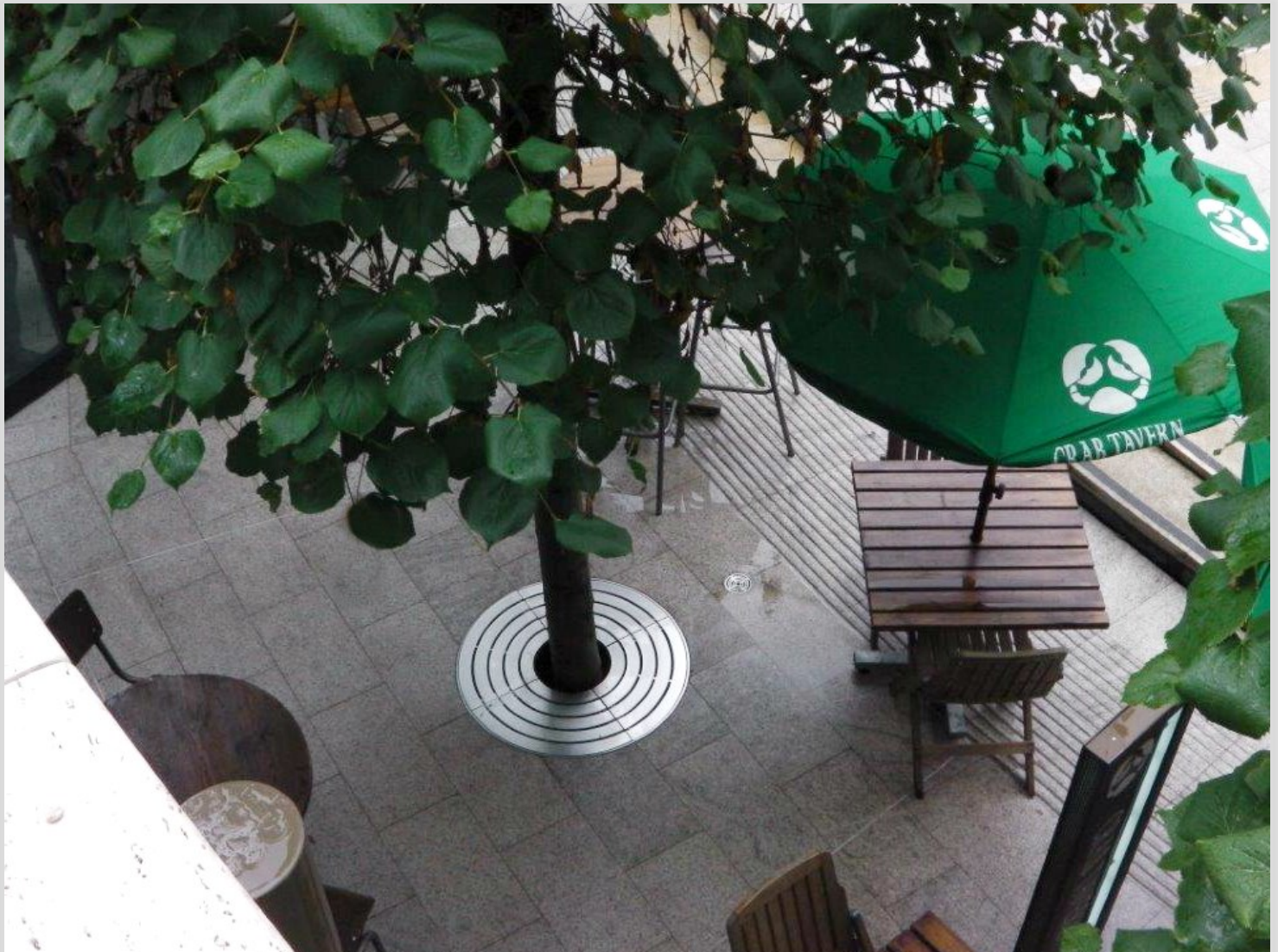
The Kent Broadgate Circular Tree Grille is a stainless steel tree surround designed from circular Grade 316L Stainless Steel plates, the inside ring is removable to create a larger opening for the tree trunk if it grows in later years.

The next 4 rings are joined together and are installed or removed as quadrants.

It has a Bright Peened Finish as standard - but polishes and finishes can be customised project by project.

Features:

- Grade 316L Stainless Steel
- Removable Stainless Steel Inside Ring
- Bright Peened Finish



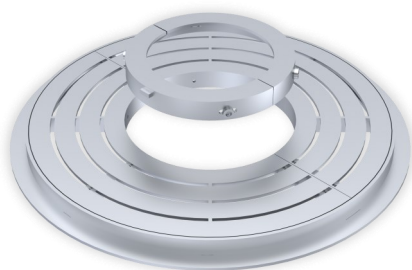
Broadgate Circle, London, UK

BROADGATE CIRCULAR TREE GRILLE KBCTG/900

Product Dimensions

Product Code	Height	Dia	Thickness
Kent Broadgate Circular Tree Grille (KBCTG900/300-5)	100mm	900mm	10mm

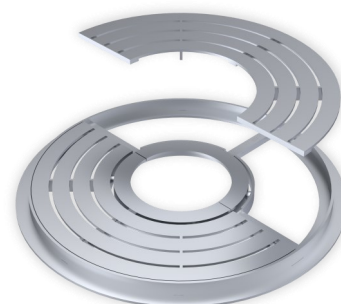
Drawings



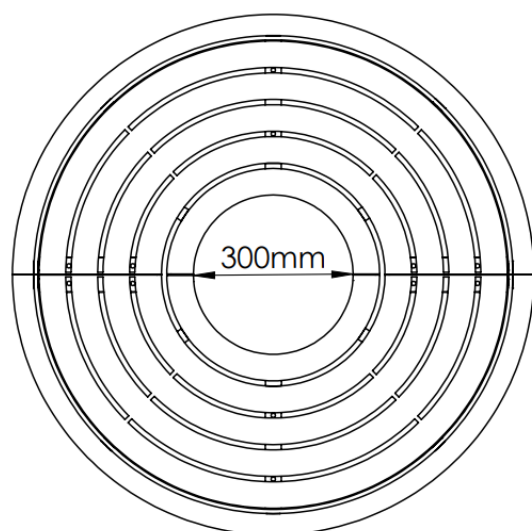
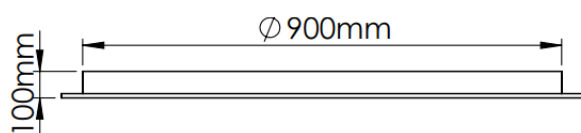
Inner ring can be removed as the tree increases in size



Tree pit inserts can be assembled in quarters



Tree pit outer frame is delivered in halves



BROADGATE CIRCULAR TREE GRILLE KBCTG/900

Specification

Specify:

Broadgate Circular Tree Grille KBCTG900/300-5; Height 100mm ; Length 900mm ; Grade 316L Stainless Steel, Bright Peened Finish

Customise your size, or go with our standard 900mm diameter

Choose your steel & Thickness

- Grade 316 Stainless Steel
- Grade 304 Stainless Steel
- Pre-Weathered Corten Steel



Gutter Lane, Cheapside, London, UK

BROADGATE CIRCULAR TREE GRILLE KBCTG/900

Finishes

These Planters can be manufactured from :

- Grade 316L Stainless Steel
- Grade 304L Stainless
- Pre-Weathered Corten Steel



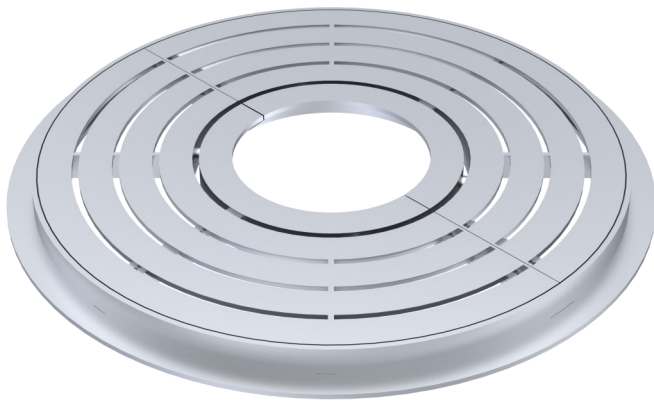
Click on Finish image



Bright Peened



Pre-Weathered Corten



Bright Peened



CorTen

BROADGATE CIRCULAR TREE GRILLE KBCTG/900

Maintenance

Stainless Steel Maintenance

Clean the stainless steel components using warm water with a mild detergent with a non-abrasive cloth or sponge. Heavier stains may require the use of a nylon-scouring pad or a stainless steel cleaner.

To remove paint or graffiti use a cloth and Alkaline or solvent paint strippers according to type of paint. In the case of a bead blasted finish, where abrasive cleaning is required, always use a random circular rubbing action with a cloth.

In the case of brushed finishes the surface consists of uniform fine 'scratches' running in one direction so where abrasive cleaning is required always use a straight back and forward rubbing action in the direction of the grain using soap and warm water.

Rust spots or 'tea stains' can occur on the surface of the material, these are normally caused by contamination from ordinary mild steel, particularly in areas where construction work has been undertaken. Such stains can be removed using Rust Remover 410.

In cases where the surface is severely stained because of severe environmental conditions or scratched due to misuse, it may still be possible to restore the original finish using chemicals such as Oxalic Acid solution. There are many stainless steel polishes available to enhance the surface finish.

Corten Steel Maintenance

Corten steel is similar in strength to Stainless Steel grade 304 and grade 316 – so similar thicknesses of edging can be interchanged on a project. There is a non-uniform patina on the surface that has a rust-like colour but in fact protects the steel below from corrosion. The patina makes it resistant to graffiti and stickers – and any future remedial work can disappear over time as the oxidation forms a new patina over these areas. As a result Corten should need no cleaning regime after installation.

KENT STAINLESS

A partner you can rely on



Broadgate Circle, Liverpool Street, London, UK

Contact us

Phone: +353 53 914 3216

UK Freephone: 0800 376 8377

USA: 718 374 7391

Email: info@kentstainless.com

Address: Ardcavan, Wexford, Ireland, Y35 CRW2

