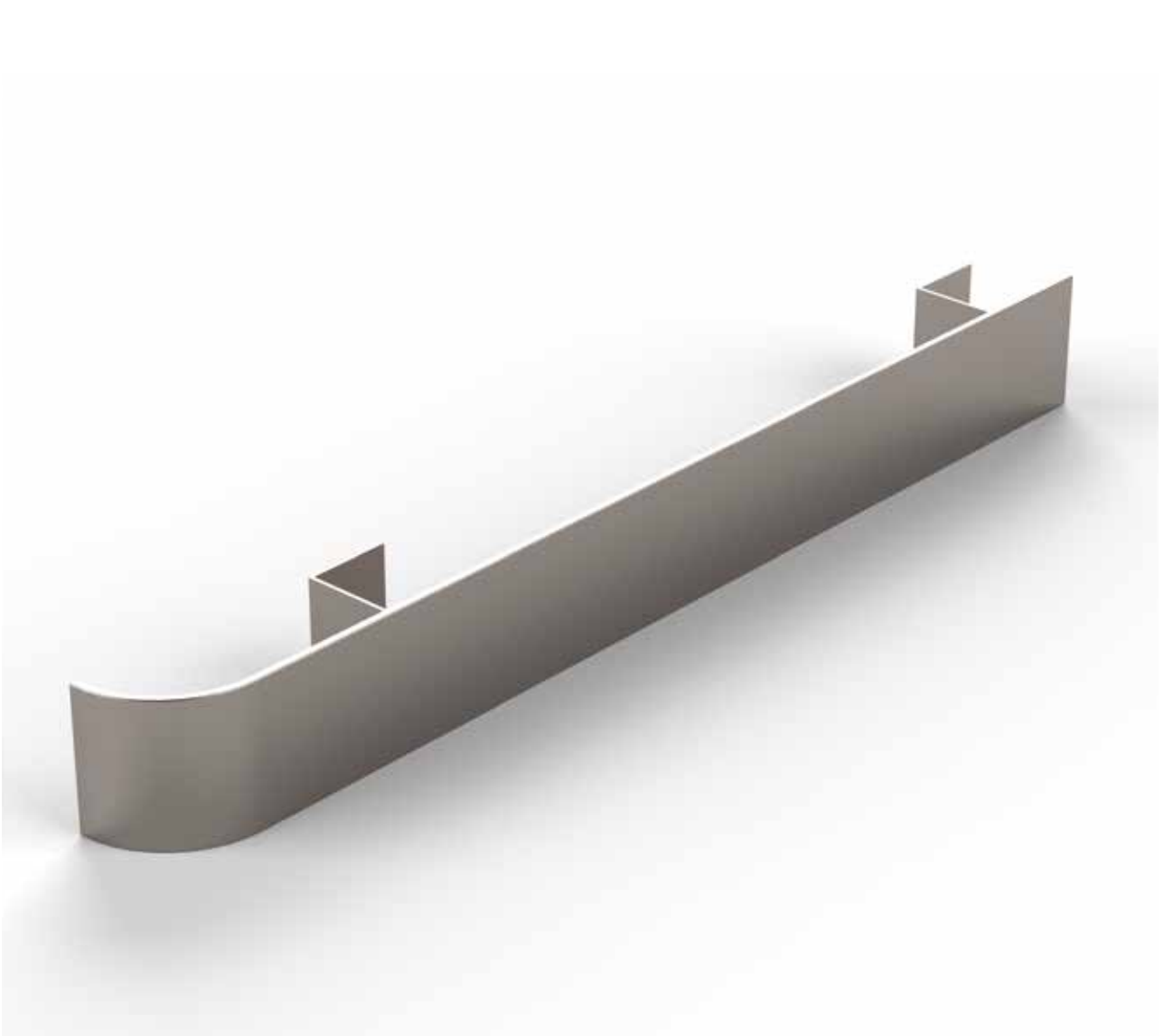


CLEANROOM FLAT BAR CRASH RAIL



Cleanroom Flat Bar Crash Rail

Kent Stainless Cleanroom Flat Bar Crash Rail is an alternative to our Wall Guard range and complements our Corner Guards and Tubular Bump Rail.

This Cleanroom style Flat Bar Crash Rail is typically supplied mounted on 3" Z Brackets with invisible front fixings - a welded stub to the rear of the crash rail is mechanically fixed to the Z Bracket. The standard offset from the wall is 3", but we can accommodate any offset desired from 1-1/2" beyond.

The brackets have 4 perforations—of which 2 are required to connect to the wall. The remaining 2 are useful in case of a clash with steel partition fixings. Also, this Z bracket is reversible allowing the 2 or 4 fixings to be made on the opposite side.

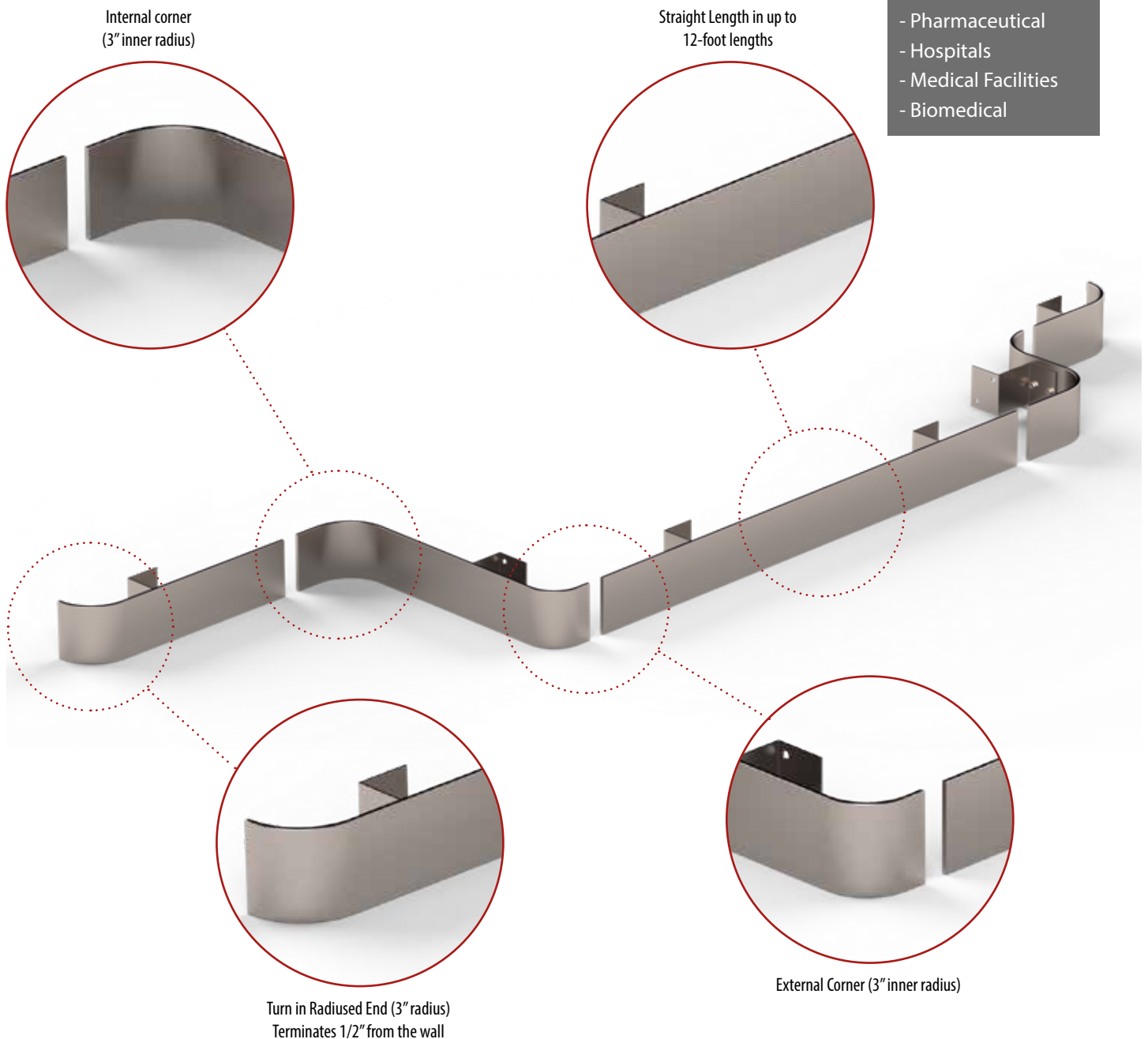
Manufactured and shipped from east coast USA.

FEATURES

- 1/4" Thick Flat Bar (6mm)
- ASTM No. 4 Satin Finish (USA)
- EN10088 320 Grit Satin Finish (EU)
- Z Brackets
- Grade 304L Stainless Steel as standard
- 316L as an option

INDUSTRIES

- Laboratories
- Pharmaceutical
- Hospitals
- Medical Facilities
- Biomedical

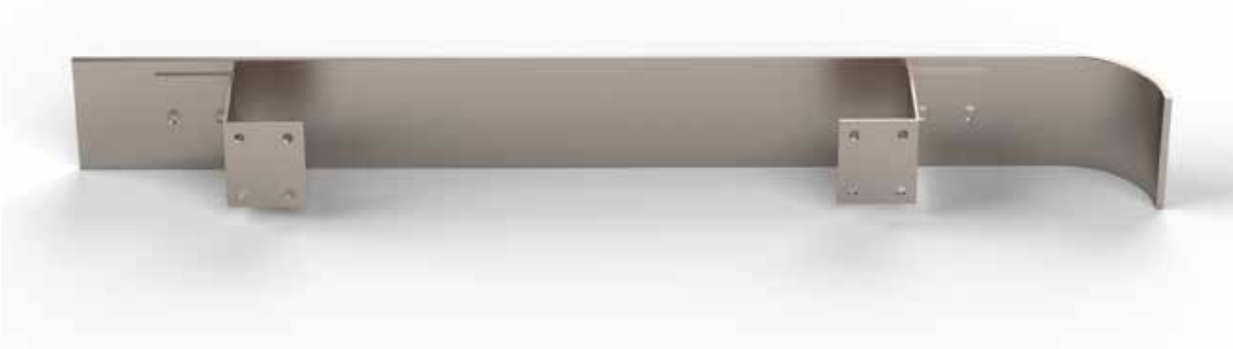


Product Code	Thickness	Height	Bracket Offset
Cleanroom Flat Bar Crash Rail KCCR102/5/76	1/4" (6mm)	4" (102mm)	3" (75mm)
Cleanroom Flat Bar Crash Rail KCCR76/6/76	1/4" (6mm)	3" (76mm)	3" (75mm)
Cleanroom Flat Bar Crash Rail KCCR152/6/76	1/4" (6mm)	6" (152mm)	3" (75mm)

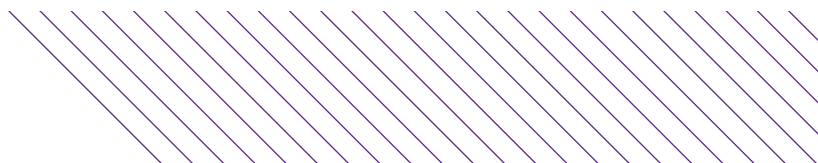
4" high rails are our standard product but can be customised. Maximum distance between mounting brackets is 4 foot, but can be reduced to 1 foot. A short length up to 10 inches can be mounted on 1 bracket.



Hygienic Invisible Fixings—stubs welded to rear of flat bar allow completely smooth finish to front face.



Z Bracket can be reversed to help avoid clashes with services behind drywall. Z Bracket requires 2 fixings through to dry wall at rear. Kent supplies this back plate with 4 perforations of which only 2 are required—allowing flexibility when installing. (1 fixing from the top row and 1 from the bottom row must be used as a minimum)



SPECIFY

Kent Cleanroom Crash Rail (KCCR102/6/76): ▶ Grade 304L Stainless Steel; ▶ No. 4 Finish; ▶ L:10', H: 4", Z: 3"; ▶ Thickness 1/4"; Invisible Fixings.

