



KENT STAINLESS: GIKR—Recessed Stainless Steel Grease Interceptor

The GIKR is our recessed cover version of our GIK range. This is for applications where a double sealed cover is required—eg indoors or close to an exit door. It is suitable for floors with a concrete and tile. It is manufactured fully in grade 304 stainless steel.

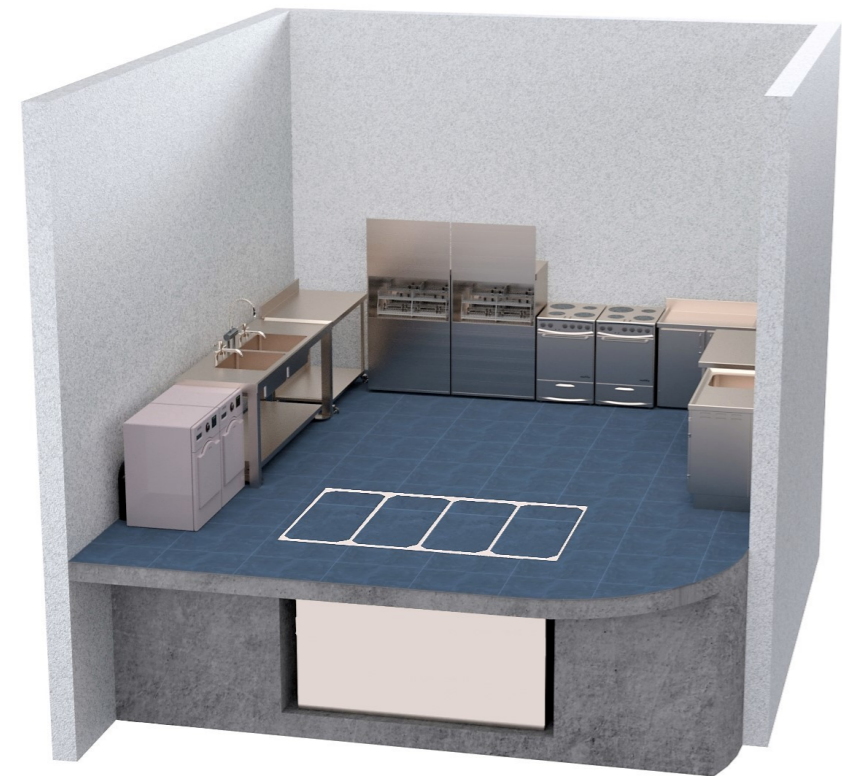
This unit has an easy to remove cover, which are locked down as standard. Recessed covers to allow infill to match the surrounding floor and a specially designed sampling point on the outlet so that the water leaving the unit can be tested at any time.

Recommended for: Takeaways, Restaurants, Hotels and Supermarkets with Kitchens .

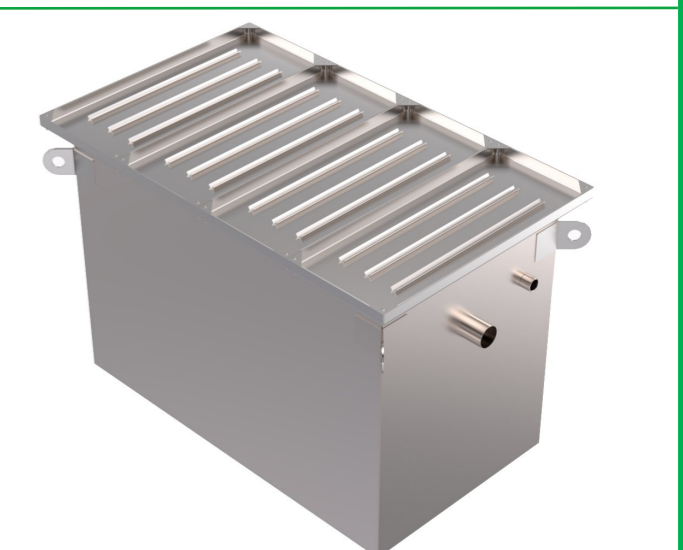
NS 7 is our most popular size from this range

- Features**
- Stainless Steel Grade 304
 - Easy to remove cover
 - Sampling point for testing

NS 2 - 20
80 Litre - 800 Litre Grease Capacity



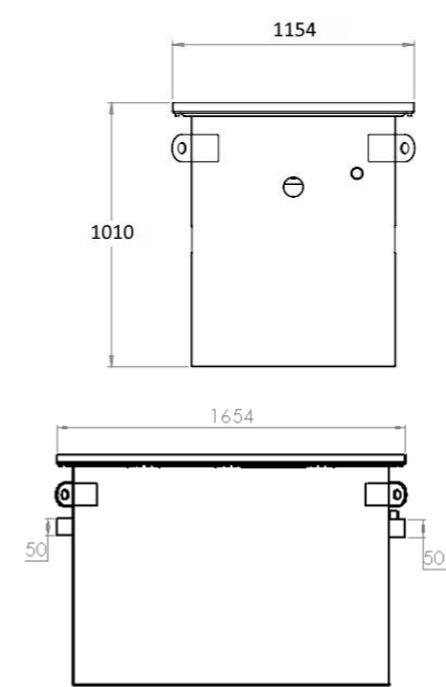
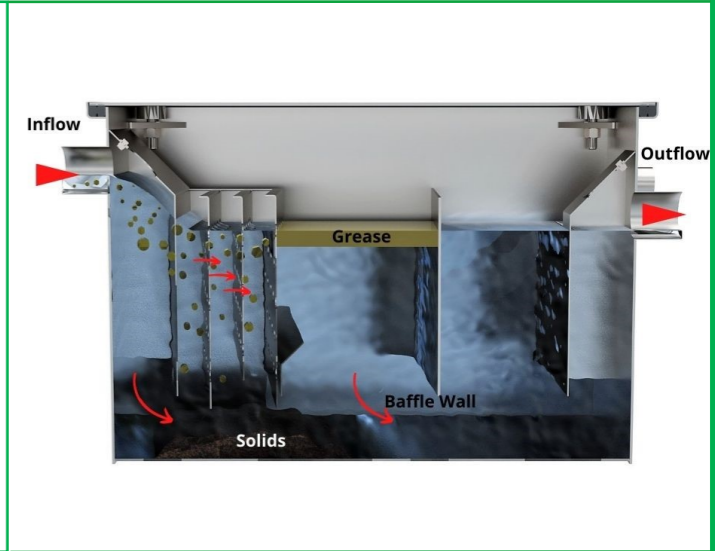
Recessed Grease Interceptor for use in new build construction projects to remove FOGs (Fats, Oils & Greases) from the system. As FOGs cool, they clog and block the drains creating issues in the future. Not pictured: Optional Dosing intake pipe for active grease traps.



Internally, the large first baffle slows the water down. This will help the discharge to cool enough for the grease to lose momentum and rise to the surface of the water. The perforated baffles also helps Food Particles to separate from the Water and the FOGs, and to settle on the bottom.



With the food particles settling on the base, and the grease trapped on the surface behind the last baffle wall, grease is prevented from entering the waste discharge.



Example of NS 7

Kent Model	Nominal Size	Sludge Trap	Grease Capacity	Filled Volume	Length A	Width B	Height* C	Pipe D
GIKR 9075	2	200L	80L	272L	1062	762	606	110
GIKR 9515	4	400L	160L	728L	1454	1004	960	110
GIKR 9520	7	700L	280L	989L	1654	1154	1010	160
GIKR 9530	10	1000L	400L	1702L	1780	1240	1190	160
GIKR 9540	15	1500L	600L	2278L	1768	1272	1454	160
GIKR 9550	20	2000L	800L	6800L	4000	1250	2120	160

* The sizes listed above are our most common sizes but we can go right up to NS 20 customised.
Specify: Kent GIKR9520 Recessed Grease Interceptor . Nominal Size NS7, 1654mm x 1154mm x 1010mm (h); Grease Capacity 280L; Sludge Capacity 700L. Grade 304 Stainless Steel. Lockdown Cover. FACTA A Traffic Loading

* Amend underlined words to suit project

