

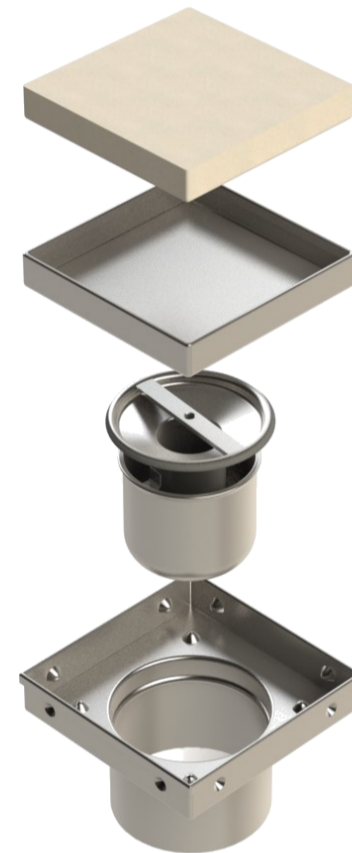
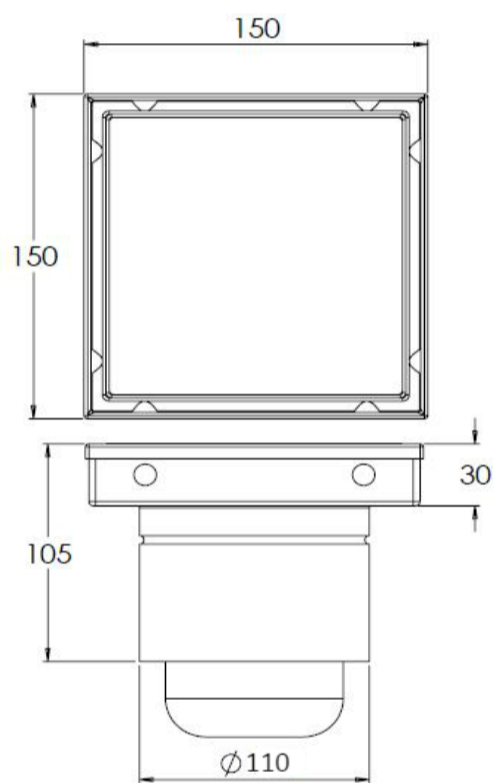
## Stainless Steel Tile Drain

The Kent KTD150/102 Stainless Steel floor drain with tile infill has been developed specifically for the high end residential market. The floor drain can be infilled with a solid tile or a glass block giving an extra special effect. The floor drains are manufactured in grade 316 stainless steel with a satin finish and a 4.0mm drainage slot as standard

### Feature

- Grade 316 Stainless steel
- 102mm diameter
- Mill finish as standard

**BS EN1253 Loading Class K3—Suitable for Pedestrian and Barefoot areas.**



Product Code	Height	Width	Depth	Outlet	Flow Rate
KTD150/102	40mm	150mm	150mm	102mm	1.4 l/s
KTD200/102	40mm	200mm	200mm	102mm	1.4 l/s
KTD150/110	105mm	150mm	150mm	110mm	1.4 l/s
KTD200/110	105mm	200mm	200mm	110mm	1.4 l/s

Specify: Kent KTD150/102. 150mm x 150mm, 2 part floor drain . Grade 316 stainless steel with a mill finish.