



**Kent**  
STAINLESS

11/2023

# ST.GEORGES PLANTER

KSGP- 1200





## ST. GEORGES PLANTER - KSGP- 1200

**Specify:**

Kent St. George Planter KSGP-1200; 900mm overall height; 1200mm overall length; 600mm overall width; Grade 316L Stainless Steel; Powder coated Kent Antique Copper Finish; Laser Cut 'St. George' Logo with Backing Plate

The Kent St. George Planter is manufactured from 316L Stainless Steel. It has an overall height of 900mm, width of 600mm and length of 1200mm with a 3mm thick body throughout. It has a Powder Coated Kent Antique Copper finish. It is accompanied with a beautifully crafted Laser Cut 'St. George' Logo made from 316L Stainless Steel with a Bright Satin finish - this will be customised for your project. It has a Backing Plate that is powder coated to RAL 9011. The detailed 'St. George' writing on the planter has its own Laser Cut area, with a 316L Stainless Steel Backing Plate with a Bright Satin finish.

**Features:**

- Grade 316L Stainless Steel
- Powder coated Kent Antique Copper Finish
- Laser Cut St. George Logo w/ Bright Satin Finish
- Laser Cut Text Template
- Backing Plates behind logos



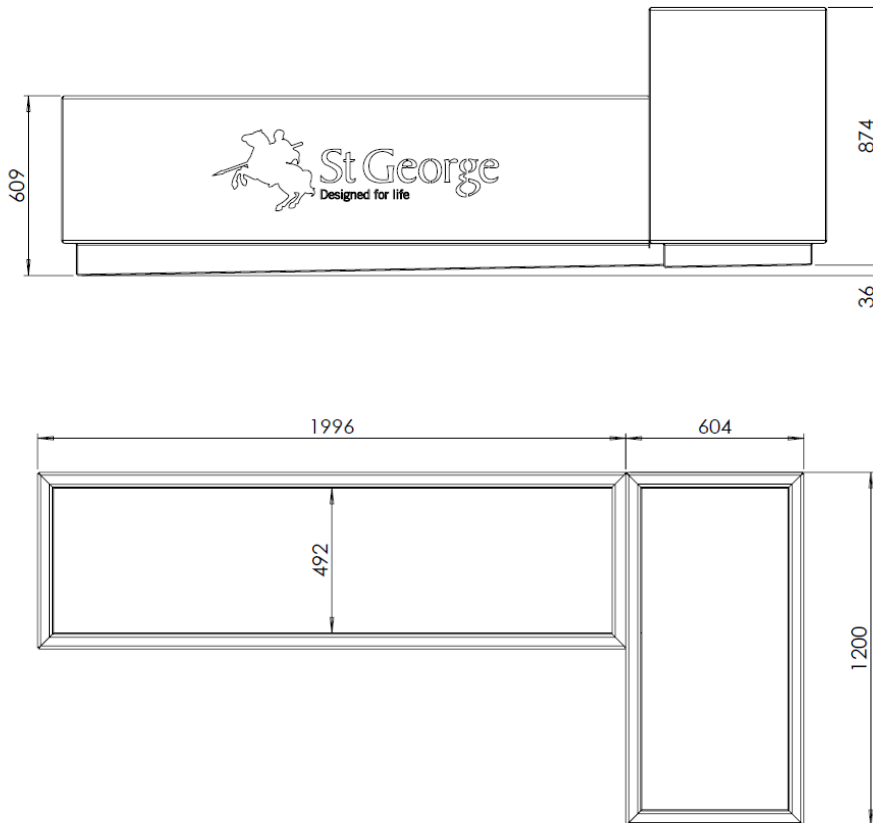


**ST.GEORGES PLANTER - KSGP- 1200**

**Product Dimensions**

Product Code	Height	Length	Width	Thickness
Kent St. George Planter KSGP-1200	900mm	1200mm	600mm	3mm
Kent St. George Planter KSGP-1200	900mm	1200mm	600mm	3mm

**Drawings**



### Specification

#### Specify:

Kent St. George Planter KSGP-1200;

Height 900mm ; Length 1200mm ; Width 600m; Grade 316L Stainless Steel; Powder coated Kent Antique Copper Finish; Laser Cut Custom Logo; Black Backing Plate; 316L Backing Plate for letters

**Choose your steel & Thickness**

- Pre-Weathered CorTen Steel
- Grade 304 Stainless steel
- Grade 316 Stainless steel
- Powder Coated
- Faux Imitation Corten

**Customise your size, or go with our standard 900mm / 1200mm / 600mm Size**

**Choose your Finish**

- Bright Satin
- 320 Grit Satin Finish
- Bright Peened
- Shot Peened
- Tiger Bronze
- Imitation CorTen
- Antique Copper
- Metallic Black



Stainless



Tiger Bronze



CorTen

## Finishes

These Planters can be manufactured from :

- Grade 316L Stainless Steel
- Grade 304L Stainless
- Powder Coated
- Pre-Weathered Corten Steel
- Faux Imitation Corten



Click on Finish image



*Bright Peened*



*Bright Satin*



*Satin Finish 320 Grit Polished*



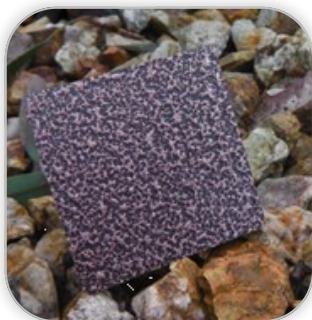
*Shot Peened*



*Tiger Bronze*



*Imitation Corten*



*Antique Copper*



*Metallic Black*



*Pre-Weathered Corten*

**ST.GEORGES PLANTER - KSGP- 1200****Maintenance****Stainless Steel Maintenance**

Clean the stainless steel components using warm water with a mild detergent with a non-abrasive cloth or sponge. Heavier stains may require the use of a nylon-scouring pad or a stainless steel cleaner.

To remove paint or graffiti use a cloth and Alkaline or solvent paint strippers according to type of paint. In the case of a bead blasted finish, where abrasive cleaning is required, always use a random circular rubbing action with a cloth.

In the case of brushed finishes the surface consists of uniform fine 'scratches' running in one direction so where abrasive cleaning is required always use a straight back and forward rubbing action in the direction of the grain using soap and warm water.

Rust spots or 'tea stains' can occur on the surface of the material, these are normally caused by contamination from ordinary mild steel, particularly in areas where construction work has been undertaken. Such stains can be removed using Rust Remover 410.

In cases where the surface is severely stained because of severe environmental conditions or scratched due to misuse, it may still be possible to restore the original finish using chemicals such as Oxalic Acid solution. There are many stainless steel polishes available to enhance the surface finish.

**Powder Coating Maintenance**

When cleaning powder coated materials it is best to pressure wash on a low setting. Where possible use filtered water as unfiltered will cause staining to the surfaces. At all times, we must avoid harsh chemicals with solvents and petroleum-based chemicals. Instead we should clean with a soft nylon brush and warm soapy water. Soap with emulsifiers, such as most common household soaps, are the best for lifting dirt and stains.

After cleaning we should apply wax to products such as street furniture, handrails and any other product that will be in contact with other materials. Apply the surface with a standard car wax as they have UV blockers and UV inhibitors built in. Apply with a micro fiber cloth and make sure to rub out any wax clumps left behind.

In coastal/salt water areas we must clean off any built-up salt on the surfaces to avoid erosion. To do this we use a soft nylon brush with mild household detergents that are free of solvents and petroleum-based chemicals. When we think of household detergents we have to remember; if they are to be avoided by our skin, they are not suitable to clean the powder coating.

Doing these cleaning and caring steps, it will maintain the longevity of the powder coating for many years.

A partner you can rely on



**Contact us**

**Phone: +353 53 914 3216**

**UK Freephone: 0800 376 8377**

**USA: 718 374 7391**

**Email: [info@kentstainless.com](mailto:info@kentstainless.com)**

**Address: Ardcavan, Wexford, Ireland, Y35 CRW2**

