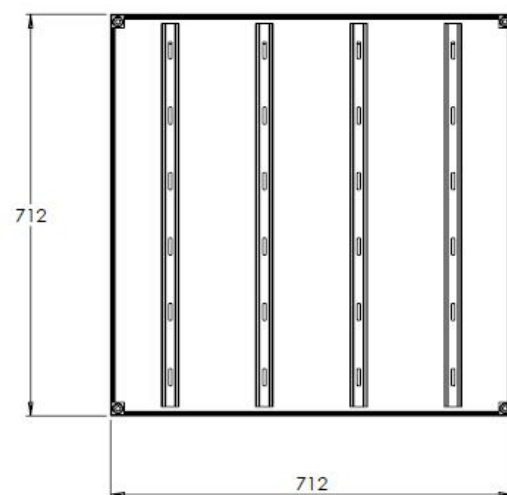
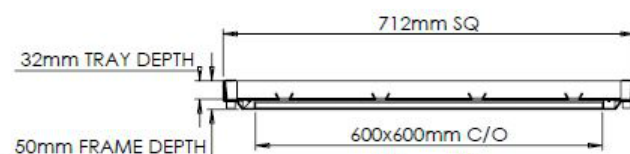
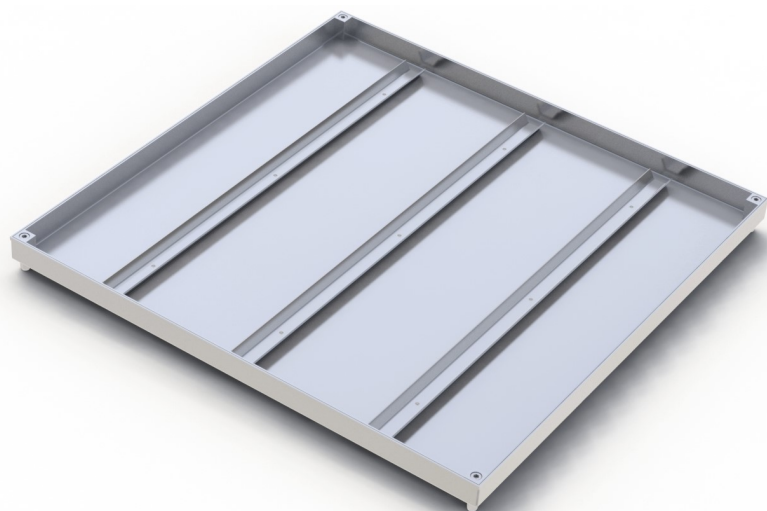


## Kent Commercial Range Manhole—KCRM 600/600

Our KCRM is a low cost Stainless Steel Recessed Manhole for a variety of finishes. It is suitable for internal usage in commercial areas such as shopping centres, restaurants, offices etc. It can take any floor finish such as concrete, tile, marble, resin etc. This floor access cover has high specifications such as double seal and lockdown points, as standard. It comes in grade 304 stainless as standard with a load class of FACTA A / BS EN1253 Class K3.

- Commercial / Residential
- Lockdown
- Double Seal
- 4 hex head lockdown points
- Shallow profile
- Discrete polished top edge
- Screed grip mesh as standard
- Stock item / Short lead time
- Pedestrian / Barefoot

06/2023



Barefoot

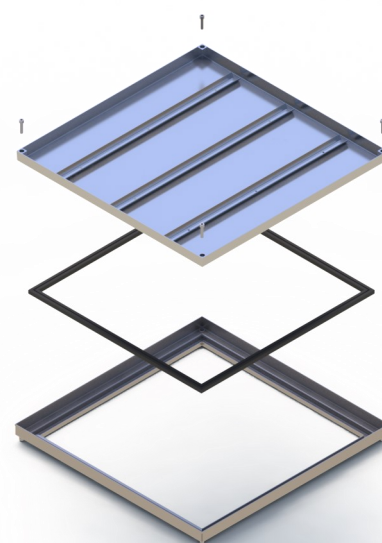


Pedestrian

BS EN1253 Class K3

FACTA Loading Class A

Product Code	Clear Opening	Visible Frame Size	Depth
KCRM300/300/32	300mm x 300mm	412mm x 412mm	32mm
KCRM450/450/32	450mm x 450mm	562mm x 562mm	32mm
KCRM600/450/32	600mm x 450mm	712mm x 562mm	32mm
KCRM600/600/32	600mm x 600mm	712mm x 712mm	32mm
KCRM750/600/32	750mm x 600mm	862mm x 712mm	32mm
KCRM750/750/32	750mm x 750mm	862mm x 862mm	32mm



Specify: Kent Commercial Range Manhole KCRM 600/600; 600mm x 600mm clear opening; 32mm Tray depth; Double Seal; Grade 304 Stainless Steel; Loading FACTA A / BS EN1253 Class K3

(amed underlined words to suit project)