



Kent Anti Terrorist Planter



Kent Anti Terrorist Planter KP68P-2170

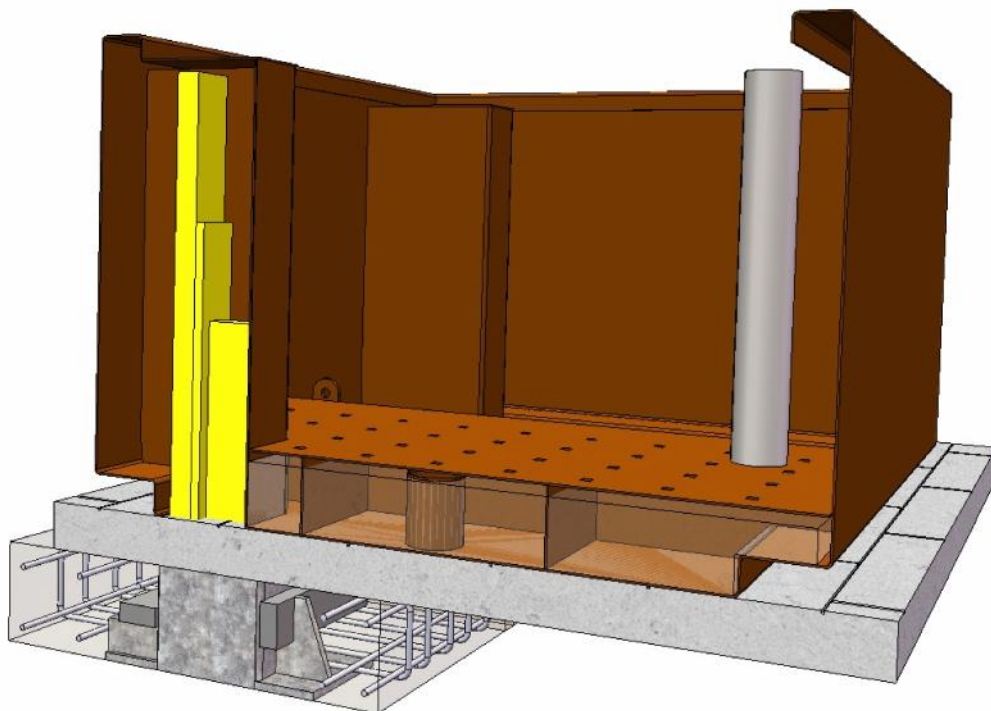
Description:

The Kent Anti Terrorist Truck PAS 68 Planter is designed to prevent terrorist attacks. The Planter is manufactured from grade 316L Stainless Steel with a bright satin finish as standard. The Kent Anti Terrorist bollard is commonly used in embassies, colleges and universities, prisons, airports, military bases, retail parks, ATM Machines, police stations and government buildings.

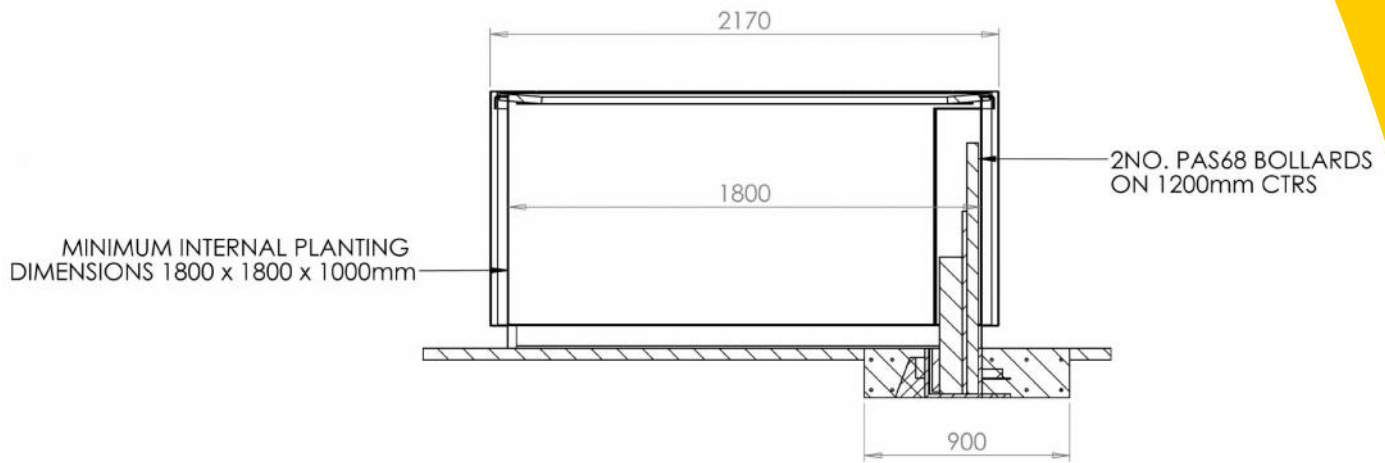
The Kent Anti Terrorist Planter is supported by the PAS 68 removable bollard core which is set towards the front side of the planter that is exposed to the possible threat. This core gives the planter the extra strength to withstand a potential impact of a car or truck. The Kent Anti Terrorist Planter is supported by a 2400mm x 900mm foundation which is fitted with a rebar cage and concrete fill grade C50. The Pas 68 removable bollards are then inserted into the fittings and the planter is then placed on top. This design makes it capable to withstand a 7500kg Truck at 48 km/h (30mph).

Features:

- Stops a 7500kg Truck at 48 km/h (30mph)
- Fully complies with BSI PAS68:2007
- 2400mm x 900mm Foundation
- Iroko Timber Perimeter Capping



Kent Anti Terrorist Planter KP68P-2170



Product Dimensions:

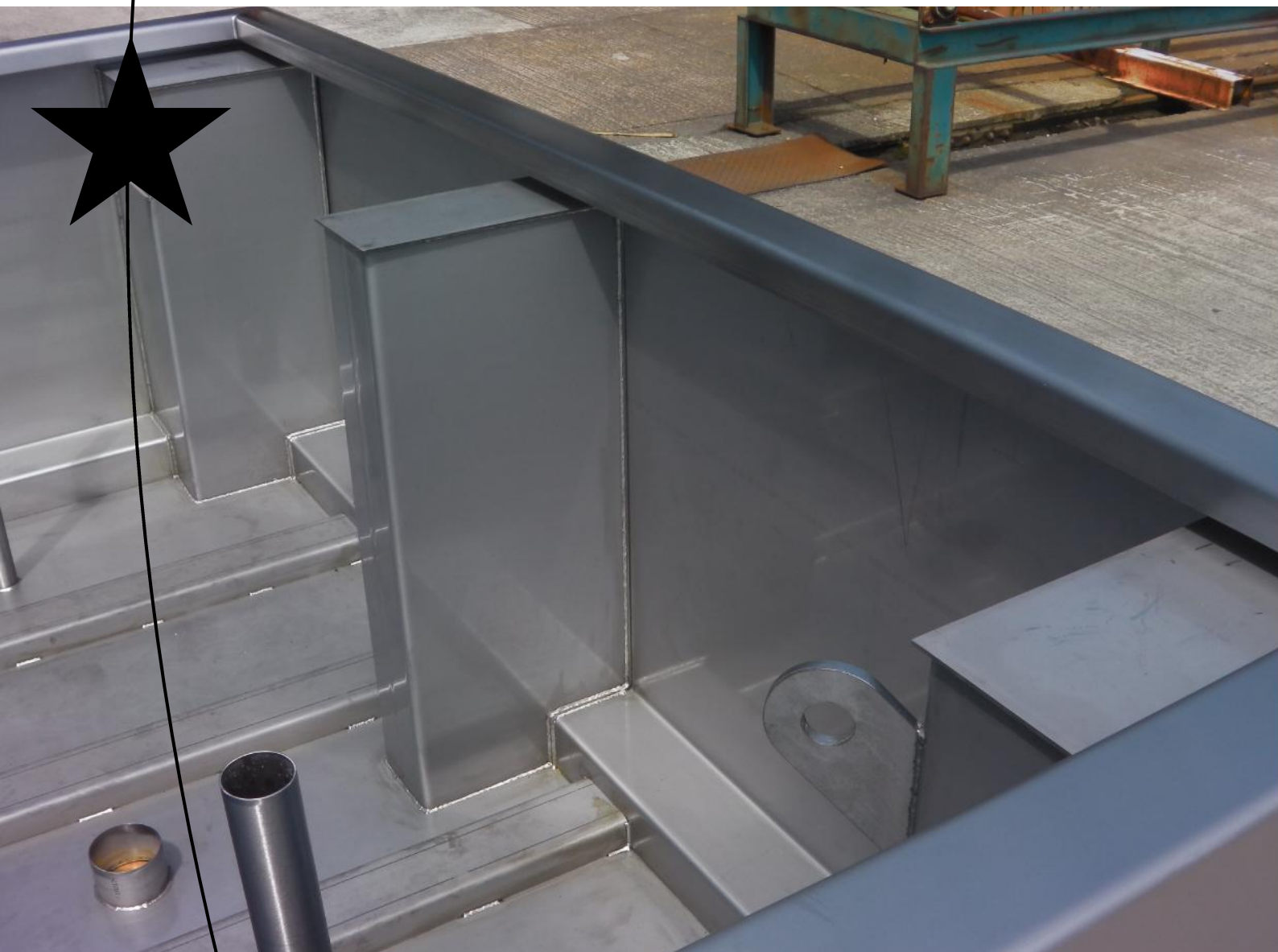
Reference	Height	Length	Width
Kent Anti Terrorist Truck PAS68 Planter	1150mm	2170mm	2170mm



Kent Anti Terrorist Planter KP68P-2170

Stainless Steel Maintenance

Clean the stainless steel components using warm water with a mild detergent with a non abrasive cloth or sponge. Heavier stains may require the use of a nylon scouring pad or a stainless steel cleaner. To remove paint or graffiti (or light concrete splashes) use a cloth and alkaline or solvent paint strippers according to type of paint. For Satin Finish Stainless try to follow the direction of the grain when cleaning vigorously or polishing. For Bead Blasted Finish use a circular motion. Rust spots or 'tea stains' can occur on the surface of the material, these are normally caused by contamination from ordinary mild steel, particularly in areas where construction work has been undertaken. Where contamination of the stainless has occurred from ordinary mild steel coming into contact with the stainless, use Rust Remover 410. In cases where the surface is severely stained as a result of severe environmental conditions or scratched due to misuse, it may still be possible to restore the original finish using chemicals such as Oxalic Acid solution. There are many stainless steel polishes available to enhance the surface finish. We recommend Mister Stainless Ltd. as a provider for stainless steel cleaning products



Kent Anti Terrorist Planter KP68P-2170

Specify:

Kent Anti Terrorist PAS68 Planter KP68P-2170; 2170mm Length, 2175 Width and 1150mm Overall Height; Grade 316L Stainless Steel; Bright Satin Finish; 2400mm x 900mm Foundation fitted with rebar cage and concrete fill; PAS68:2007 Rated to stop 7500kg ; Iroko Timber Perimeter Capping.

Used in **EMBASSIES • COLLEGES • UNIVERSITIES • PRISONS • AIRPORTS • MILITARY BASES**

Features

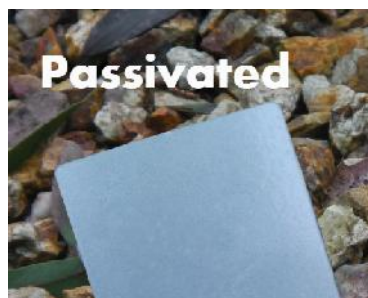
- ◆ Stops a 7500kg Truck at 48 km/h (30mph)
- ◆ Fully complies with BSI PAS68:2007
- ◆ 2400mm x 900mm Foundation
- ◆ Iroko Timber Perimeter Capping

The Planter can be manufactured from :

- Grade 316L Stainless Steel
- Grade 304L Stainless Steel
- Galvanised Steel

Finishes Available

- Electropolished
- Passivated
- Satin Finished 320 Grit Polished
- Bright Satin Finish
- Bright Peened Finish
- Shot Peened
- Powdercoated



Kent Anti Terrorist Planter KP68P-2170

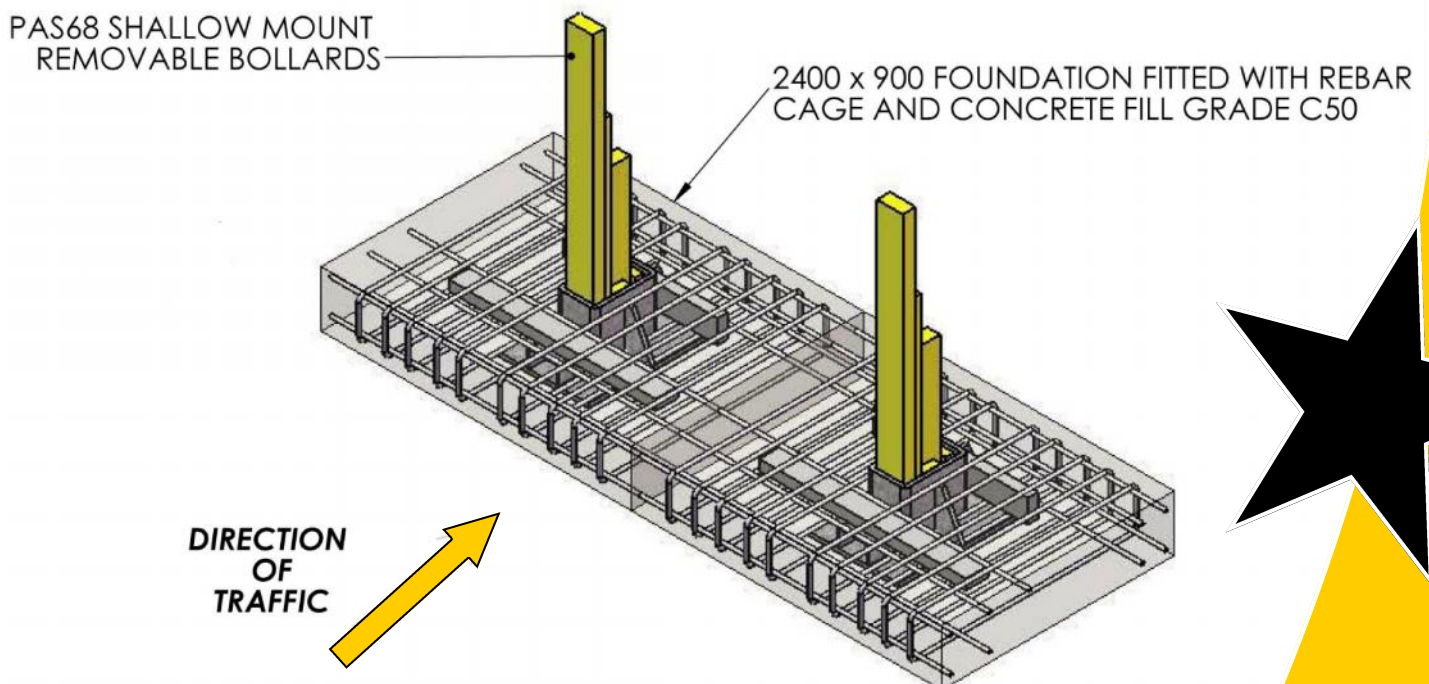
PAS 68

PAS 68 is the latest Publicly Available Specification for vehicle security barriers. It has become the national standard and the security industry's benchmark for Hostile Vehicle Mitigation equipment, and is the specification against which perimeter security equipment is tested as part of the ongoing research to prevent Vehicle Born Improvised Explosive Device attacks. The PAS 69 complements this specification by providing guidance on the product installation.

PAS 68: *specifies* a classification system for the performance of vehicle security barriers, subjected to a single horizontal impact. It also *identifies* impact test tolerances and vehicle performance criteria which need to be met in order for a product to conform and be granted a classification.

The PAS68 specification defines the vehicle type, test mass and impact speed together with the required measurements, vehicle and test item details that should be recorded and reported. Post impact, and if the test is successful -the VSB stopped and immobilised the test vehicle, then the penetration distance is measured.

The Kent Anti Terrorist Planter is supported by the PAS 68 removable bollard core which is set towards the front side of the planter that is exposed to the possible threat. This core gives the planter the extra strength to withstand a potential impact of a car or truck. The Kent Anti Terrorist Planter is supported by a 2400mm x 900mm foundation which is fitted with a rebar cage and concrete fill grade C50. The Pas 68 removable bollards are then inserted into the fittings and the planter is then placed on top. This design makes it capable to withstand a 7500kg Truck at 48 km/h (30mph).



**Kent Anti Terrorist
Planter
KP68P-2170**

