



# Kent Glazed Balustrade



# Kent Glazed Balustrade (KGB1200)

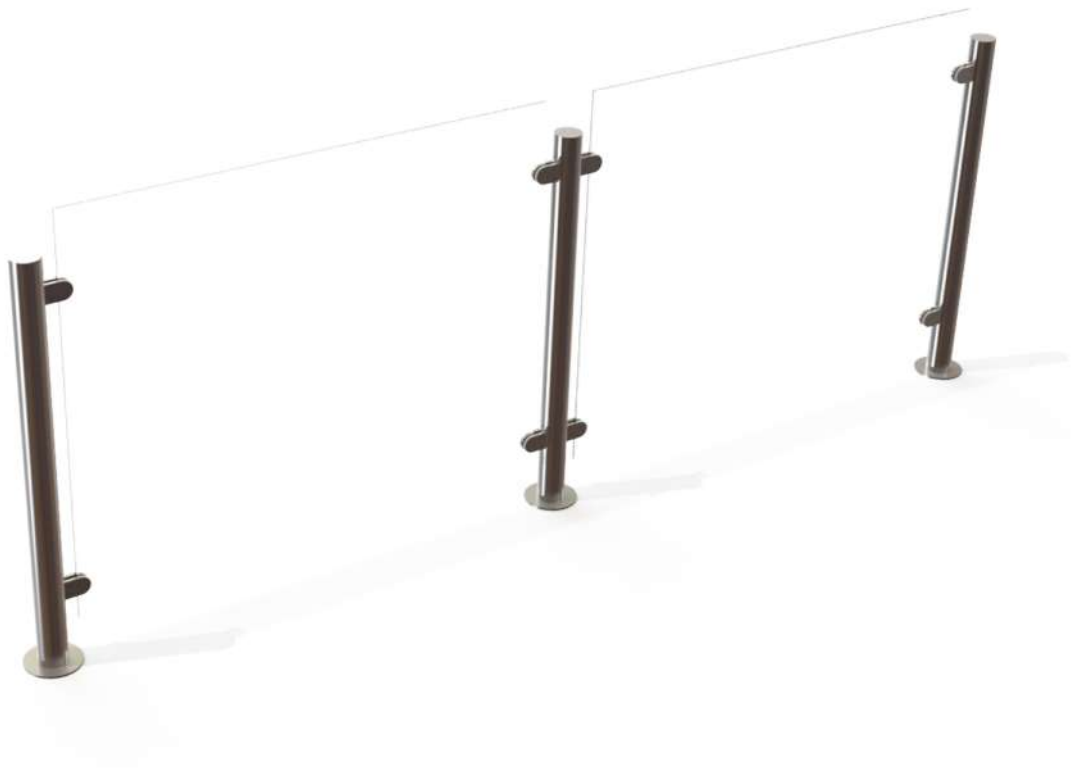
## Specify:

Kent Glazed Balustrade KGB1200; 1200mm high; Grade 316L Stainless Steel

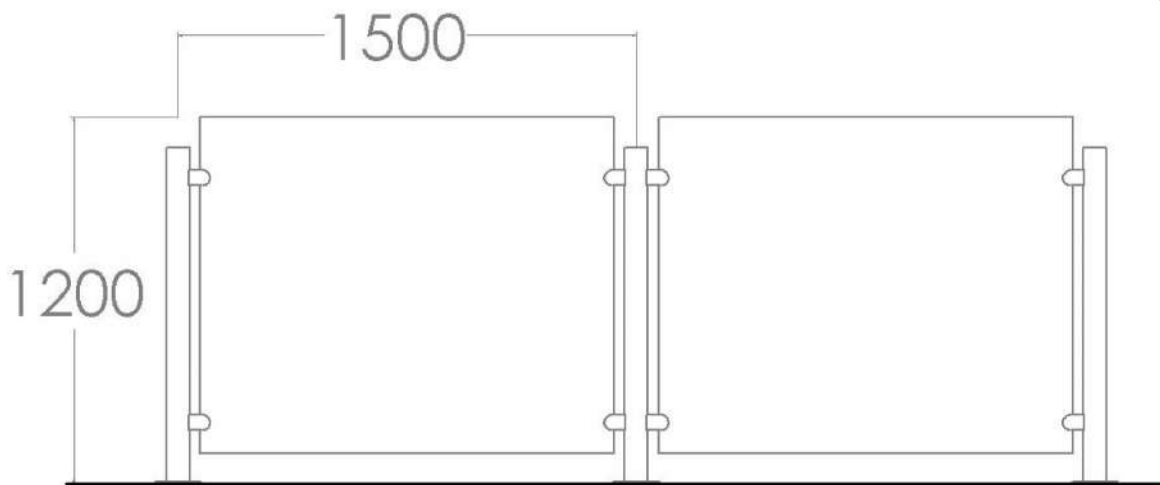
The Kent Glazed Balustrade is a contemporary Stainless Steel and glazed balustrade with a 900mm high handrail. It has an overall height of 1200mm and a glazed infill which comes with toughened glass as standard.

## Features:

- Grade 316 stainless steel
- 50mm diameter tube handrail
- 75mm diameter tube uprights
- Toughened glass infill



# Kent Glazed Balustrade (KGB1200)



## Product Dimensions:

Reference	Height	Width	Length
Kent Glazed Balustrade KGB1200	1100mm	50mm	1000-1500mm

### Glazed Balustrade Options

There are several options to choose from when purchasing the Kent Glazed Balustrade:

**Bead Blasted:** Our Bead Blasting Facility cleans Stainless Steel with a consistent finish throughout. Bead Blasting will leave welded joints and any abnormalities in the steel work with a clean and consistent finish. We also Bead Blast items that have been installed over a number of years that require refurbishment or cleaning

**Satin Finish 320 Grit Polished:** The removable tree grille is similar to the tree grille option except there is an added release mechanism which allows for access to the base of the tree by the removal of the grille.

**Electropolished:** Electropolishing removes surface material, beginning with the high points within the microscopic surface texture. By removing these points, the electropolishing process will improve the surface finish of a metal such as stainless steel, nickel, aluminum and hastelloy, leaving a smoother and more reflective surface.

### Glazing Options:

- 8mm (Toughened Glass)
- 10mm (Toughened Glass Standard)
- 12mm (Toughened Glass)
- 5/5mm (Toughened and Laminated glass)
- 6/6mm (Toughened and laminated glass)



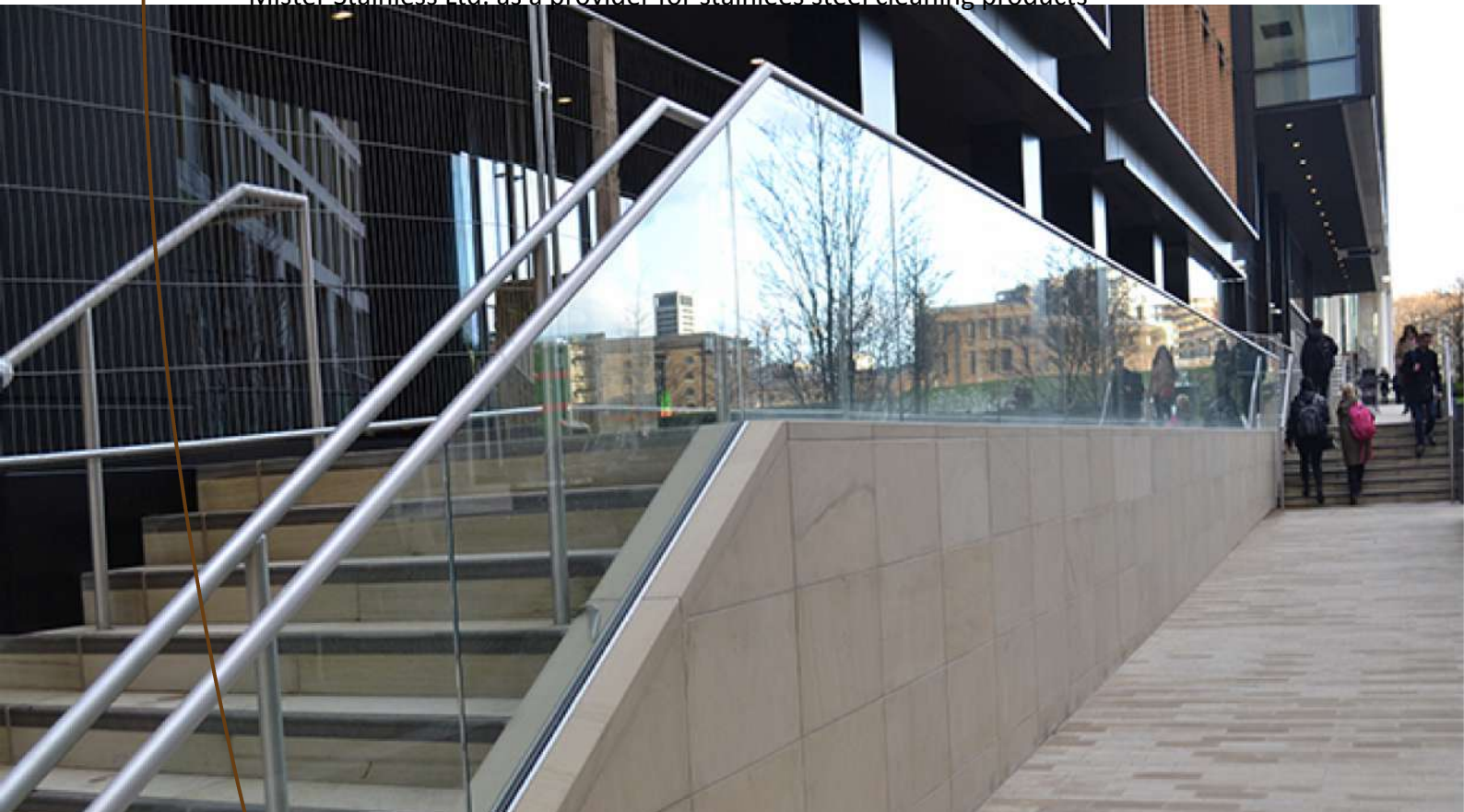
# Kent Glazed Balustrade (KGB1200)

## Overview

The Kent Glazed Balustrade is constructed from 304 grade stainless steel with 50mm tube. The external finish of the balustrade is a satin finish 320 grit polished but is also available in bead blasted or electro polished. Despite the material's corrosion resistant properties some care is required to maintain a bright appearance. The conditions that the litterbin is in (Inland or Coastal area), will greatly increase its need for cleaning and care.

## Stainless Steel Maintenance

Clean the stainless steel components using warm water with a mild detergent with a non abrasive cloth or sponge. Heavier stains may require the use of a nylon scouring pad or a stainless steel cleaner. To remove paint or graffiti (or light concrete splashes) use a cloth and alkaline or solvent paint strippers according to type of paint. For Satin Finish Stainless try to follow the direction of the grain when cleaning vigorously or polishing. For Bead Blasted Finish use a circular motion. Rust spots or 'tea stains' can occur on the surface of the material, these are normally caused by contamination from ordinary mild steel, particularly in areas where construction work has been undertaken. Where contamination of the stainless has occurred from ordinary mild steel coming into contact with the stainless, use Rust Remover 410. In cases where the surface is severely stained as a result of severe environmental conditions or scratched due to misuse, it may still be possible to restore the original finish using chemicals such as Oxalic Acid solution. There are many stainless steel polishes available to enhance the surface finish. We recommend Mister Stainless Ltd. as a provider for stainless steel cleaning products



**Kent Glazed  
Balustrade  
(KGB1200)**

