

KENT BENCHED BOTTOM MANHOLE LINER KBBML 950RD

This is the round body version of our Kent Benched Bottom Manholes Liner. It has a sloped base to help residue exit the chamber. These are most commonly used in Food, Dairy, Fish and Beverage plants.

The inlets and outlets on these benched bottom manhole liners are designed to allow for connection of stainless steel / polypropylene / UPVC pipework.

Liners can accommodate 1,2, 3 or multiple side inlets at varying invert heights and 1 side outlet. Inlet sizes vary from 75mm diameter to 300mm diameter, and to suit Dairy Pipe/Metric Pipe and Scheduled Pipe and Polypropylene /UPVC pipe sizes. Due to the round body of this model the angles of the inlets can be easily positioned to suit pipe direction.

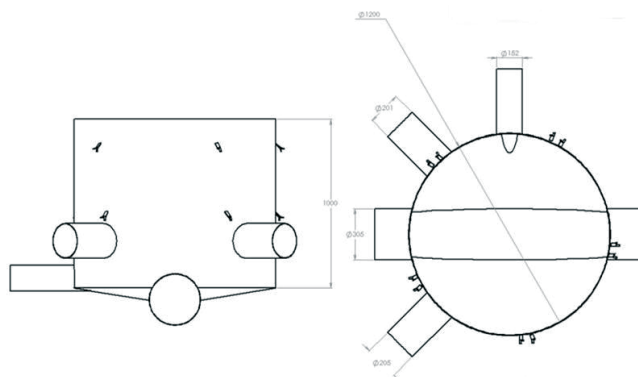
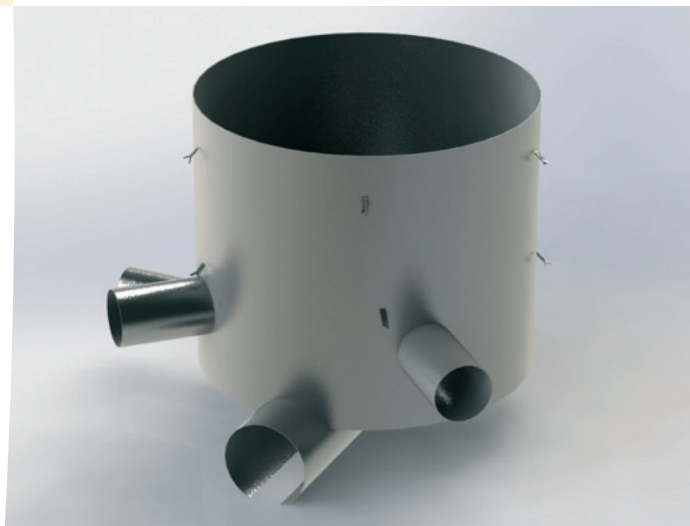
Where liners are internal in the building we generally supply

Double Sealed or Triple Sealed Recessed stainless steel manholes for concrete infill from B125 up to D400 load.

Where liners are external to the building, the covers above these liners are generally cast iron, but in some cases over process manholes we supply double sealed recessed or chequer plate stainless steel.

Liner bodies are fully welded and dye pen tested and supplied with material and test certs. For deep liners optional step rungs can be added.

Please note that in most cases the top of liner is 200-300mm below FGL (load bearing concrete above this supports the Kent or other manhole frame and cover at ground level. The manhole frame and cover is most often smaller than the liner opening and can be a standard size).



Liner sizes are customised to suit each project - the following are examples of previous sizes manufactured and can be completely adapted in terms of height/width/dept/ and inlets size and quantity.

Product Code	Diameter	Height	Outlet	Inlet 1	Inlet 2	Inlet 3
KBBML850	850	1000	204	204	160	110
KBBML1000	1000	1600	324	273	273	203
KBBML1200RD (shown)	1200	1000	305	162	201	205

Specify Clause Example: Kent Benched Bottom Manhole Liner KBBML1200RD; 1200mm dia body with 1000mm depth; grade 304L stainless steel; with 3nr side inlets 152mm, 201mm, 205mm.