

KENT BENCHED BOTTOM MANHOLE LINER KBBML 950SQ

Kent Benched Bottom Manholes Liner 950-950 have sloped bases to help residue exit the chamber. These are most commonly used in Food, Dairy, Fish and Beverage plants.

The inlets and outlets on these benched bottom manhole liners are designed to allow for connection of stainless steel / polypropylene / UPVC pipework.

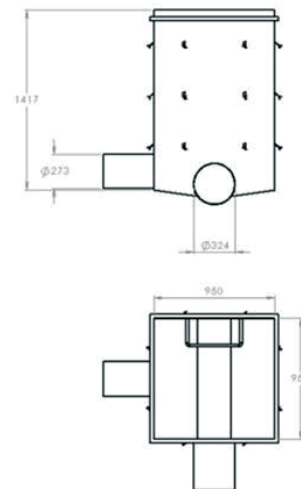
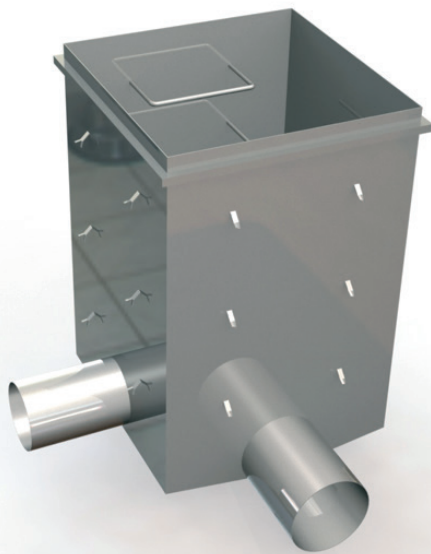
Liners can accommodate 1,2, 3 or multiple side inlets at varying invert heights and 1 side outlet. Inlet sizes vary from 75mm diameter to 300mm diameter, and to suit Dairy Pipe/Metric Pipe and Scheduled Pipe and Polypropylene /UPVC pipe sizes.

Where liners are internal in the building we generally supply Double Sealed or Triple Sealed Recessed stainless steel

manholes for concrete infill from B125 up to D400 load. Where liners are external to the building, the covers above these liners are generally cast iron, but in some cases over process manholes we supply double sealed recessed or chequer plate stainless steel.

Liner bodies are fully welded and dye pen tested and supplied with material and test certs. For deep liners optional step rungs can be added.

Please note that in most cases the top of liner is 200-300mm below FGL (load bearing concrete above this supports the Kent or other manhole frame and cover at ground level. The manhole frame and cover is most often smaller than the liner opening and can be a standard size).



Liner sizes are customised to suit each project - the following are examples of previous sizes manufactured and can be completely adapted in terms of height/width/dept/ and inlets size and quantity.

Product Code	Width	Length	Height	Outlet	Inlet 1	Inlet 2	Inlet 3
KBBML700-700SQ	700	700	500	160	110	110	
KBBML950-950SQ (shown)	950	950	1417	324	273		
KBBML1200-1200SQ	1200	1200	1200	254	254	254	160

Specify Clause Example: Kent Benched Bottom Manhole Liner KBBML950-950; 950mm x 950mm body with 1400mm depth; grade 304L stainless steel; with 1nr 273mm side inlet and 324mm outlet; c/w step rungs.