



Basic Bollard



Kent

Basic Bollard

KDT-114/2

Specify:

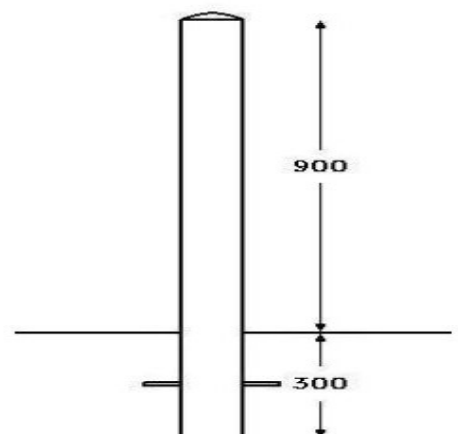
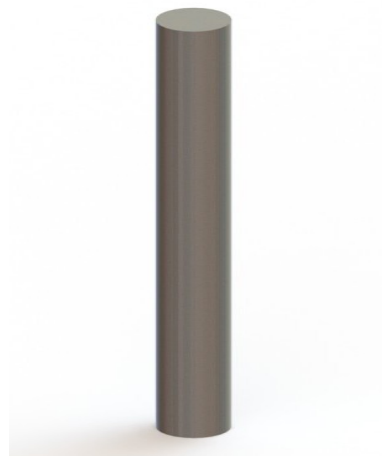
Kent Basic Bollard KDT114/2; 1200mm Overall Height; 2mm thick wall; Grade 304L Stainless Steel; Bright Satin finish as standard; Cast in 300mm below the ground.

The Kent Basic Bollard is manufactured from Grade 304L Stainless Steel, 114mm diameter with a 2mm thick wall. It has a Satin 240 grit polished finish. The standard length is 1200mm, with 300mm being cast below ground, giving 900mm above ground. It has laser-cut cut pull out sprags, along with perforation to receive the lock from a removable socket. This means this one bollard can be used as a fixed bollard or it can be easily made removable with a NAL/IPL socket.



Features

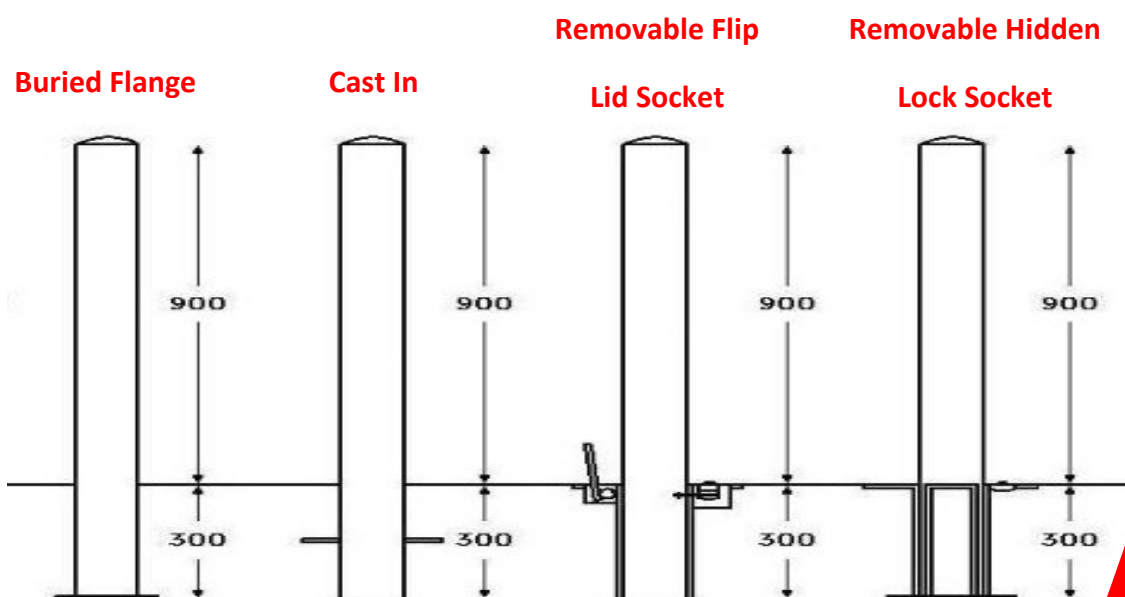
- Satin polished finish (Polished to 0.5 RA)
- Dome top
- 2mm wall thickness
- Grade 304L Stainless Steel
- Laser cut pull out sprags
- Stamped Kent Logo





Product Dimensions:

Reference	Height	Diameter	Thickness
Kent Basic Bollard KDT114/2	1200mm	114mm	2mm



Kent

Basic Bollard

KDT114/2

Bollard Installation

Buried Flange:

- Cast a foundation 300mm with a minimum dimensions of 350mm LxWxD below the surface.
- Once concrete is set follow steps 1-3 as per flange detail above.
- Replace slabs to finish off bollard.

Cast In:

- Remove pavement and excavate hole to minimum dimensions of L350 x W350 x D350.
- Position your bollard in the correct position ensuring correct height and then prop the bollard securely.
- Fill the hole with concrete up to the level of the underside of the pavement ensuring a good smooth surface finish.
- Remove props and replace the paving slabs and ensure they are well bedded in.

Removable Hidden Lock Socket and Removable Flip Lid Socket

- Remove pavement in the location the bollard will be placed. Excavate a hole of minimum 400mm LxWxD.
- Place socket of bollard into the hole ensuring the top surface of the socket meets the top surface of the pavement.
- Fill the hole with concrete leaving sufficient space for pavement.
- When set finish off pavement around socket and place bollard into the socket.

Product Options:



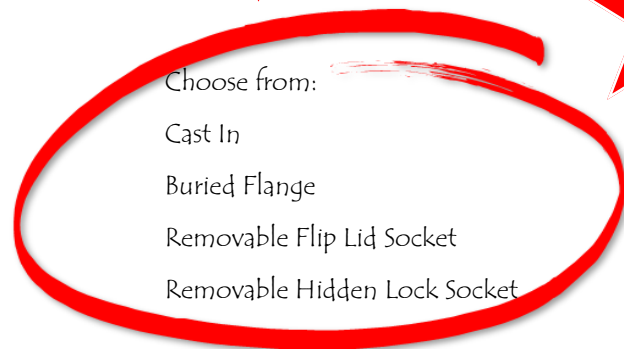
Grade
304L

Specify:

Kent Basic Bollard KDT114/2; 1200mm Height; 2mm thick wall; Grade 304L Stainless Steel; Bright Satin finish as standard; Cast in 300mm below the ground.



Satin finish 240 Grit Polished



Choose from:

Cast In

Buried Flange

Removable Flip Lid Socket

Removable Hidden Lock Socket



Accessories:

25mm Reflective Tape



Kent

Basic Bollard

KDT114/2

Overview

The Kent Basic Bollard KDT114/2 is constructed from 304L Stainless Steel with a 2mm thick body. The external finish of the bollard is Bright Satin as standard. Despite the material's corrosion resistant properties some care is required to maintain a bright appearance. The conditions that the bollard is in (Inland or Coastal area), will greatly increase its need for cleaning and care.

Maintenance

Stainless Steel:

Clean the stainless steel components using warm water with a mild detergent with a non-abrasive cloth or sponge. Heavier stains may require the use of a nylon-scouring pad or a stainless steel cleaner. To remove paint or graffiti use a cloth and Alkaline or solvent paints and strippers according to type of paint. In the case of a bead blasted finish, where abrasive cleaning is required, always use a random circular rubbing action with a cloth. In the case of brushed finishes the surface consists of uniform fine 'scratches' running in one direction so where abrasive cleaning is required always use a straight back and forward rubbing action in the direction of the grain using soap and warm water. Rust spots or tea stains can occur on the surface of the material, these are normally caused by contamination from ordinary mild steel, particularly in areas where construction work has been undertaken. Such stains can be removed using Rust Remover 410. In cases where the surface is severely stained because of severe environmental conditions or scratched due to misuse, it may still be possible to restore the original finish using chemicals such as Oxalic Acid solution. There are many stainless steel polishes available to enhance the surface finish. We recommend Mister Stainless Ltd. As a provider for stainless steel products.

