

KENT CHEQUER MAN ACCESS KCHQMA2400/2400

The Kent Chequer Man Access Manholes KCHQMA-2400/2400 are used where equipment may be inserted in a chamber at the beginning of a project and should not need to be replaced for many years. Overall, this is one large manhole cover which has a man access hatch inserted to cater for frequent access by maintenance personnel and also to cater for emergency situations. As this is one large cover, it lends itself to be easily modified to become watertight. They can be supplied as watertight against pressureless surface water and they can also be modified to include an additional internal drainage channel as an extra feature.

They are manufactured in accordance with BS9124:2008 and FACTA standards and they are made from Grade 304 or Grade 316L Stainless Steel as standard. Material can be changed to Galvanised Mild steel when required and there is a Double Sealed version available.

There is also an option to include an Inspection Port if required. (150mm x 150mm hinged)

Typically the 'Man Access Hatch' has 600mm x 600mm clear opening. These covers are hinged with a robust stainless steel hinge, and they can be supplied with Gas struts or Kent Lift Assist mechanical struts to allow the 'Man Access Hatch' to be opened with a force compliant with manual handling regulations.

Features

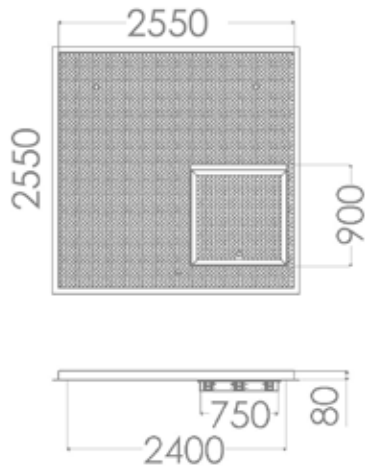
- Emergency Access
- Large Single Unit (Easily modified to become watertight)
- Man Access Hatch can have Gas Struts or Kent Lift Assist Mechanical Struts
- Beam support built into cover
- Optional Safety Grid
- Standard Safety Stay
- Lockdown as standard
- 3 Lifting Points as standard (Cover to be craned into position)
- Man access hatch can be supplied to be open from above only
- Where emergency access is required, the man access hatch can be supplied to open from above and below.



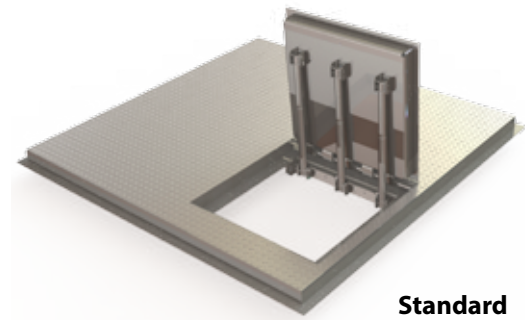
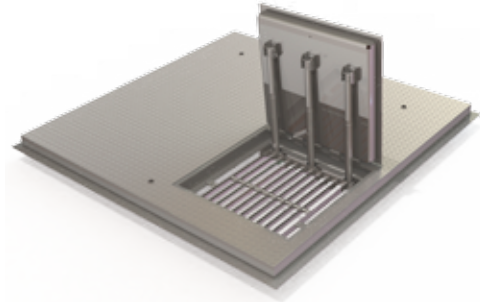
Product Code	Clear Opening	Tray Depth	Visible Frame Size (Unsealed)
KCHQMA-1800/1800	1800mm x 1800mm	80mm	1950mm x 1950mm
KCHQMA-2400/1800	2400mm x 1800mm	80mm	2550mm x 1950mm
KCHQMA-2400/2400	2400mm x 2400mm	80mm	2550mm x 2550mm

Specify: Kent Chequer Man Access manhole KCHQMA-2400/2400; 2400mm x 2400mm clear opening; Man Access Hatch open from above only; 80mm deep tray; Unsealed; Grade 304L Stainless Steel; Loading FACTA B

Customised sizes to suit project available in small production runs at no extra cost



Optional Safety Grid



Standard Safety Stay



OPTIONS

Various Loadings (See BS9124:2008 and FACTA tables)

Grade 304L Stainless Steel

Grade 316L Stainless Steel

Mild Steel Galvanised (In accordance with BS EN ISO 1461 (1999))

Mild Steel Galvanised to 140 Micron (minimum requirement for Middle East projects)

Unsealed or Double Sealed

Various Tray Depths (50mm, 80mm, 100mm)

Safety Grid

Gas Struts (for smaller sizes)

Kent lift assist Mechanical struts (for larger sizes)

Watertight against pressureless surface water

Watertight with internal drainage channel

Application Load Specific (In accordance with BS9124:2008)
1.0T
5.0T
10.0T

FACTA Class	Slow Moving Wheel Loads	Kent Safety Test (Unfilled)
A	0.6T	0.8T
AA	1.5T	3.1T
AAA	2.5T	5.2T
B	5T	10.1T
C	6.5T	13.2T
D	11T	22T