

SWANSEA CYCLE RACK



Kent Swansea

Cycle Rack KSAS1000

Specify:

Kent Swansea Cycle Rack KSAC1000; 1000mm long; Grade 316L Stainless Steel; Bright Satin Finish; Surface Mounted.

The Kent Swansea Cycle Racks are 1000mm wide by 1000mm high. They are manufactured from Grade 316L Stainless Steel and this Circular Cycle Rack is a design led alternative to the more common and standard stainless steel cycle rack designs. The robust design allows 2 bicycles to be locked in position per rack.

The design allows the user to lock the handle bars of their bicycle to the horizontal tube rail of the cycle rack.

Features

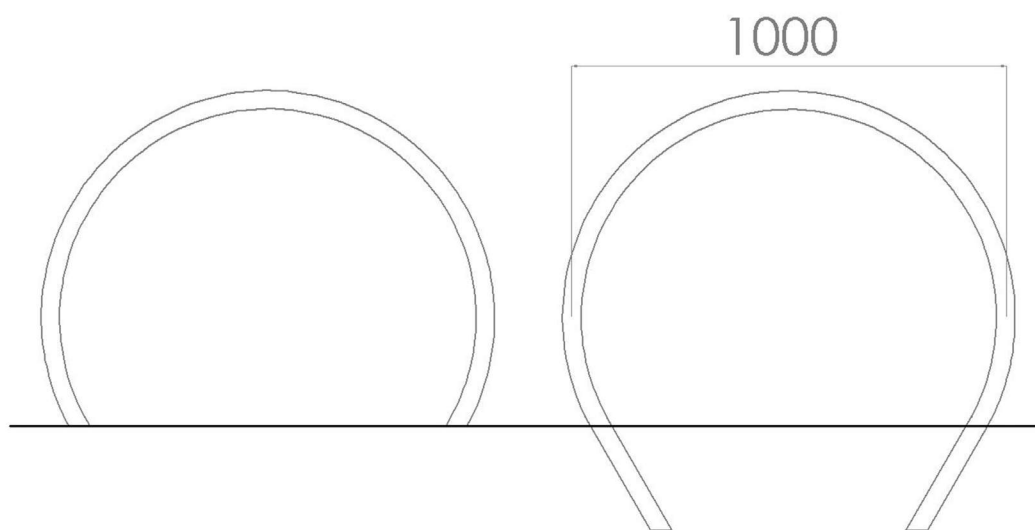
- ◆ Grade 316L Stainless Steel
- ◆ 50mm diameter tube
- ◆ 2.5mm wall thickness
- ◆ Allows 2 bicycles per rack





Product Dimintions:

Reference	Height	Width	Diameter
Kent Swansea Cycle Rack KSAC 1000	1000mm	1000mm	50mm



Kent Swansea

Cycle Rack KSAS1000

Visible Flange:

- Ensure that the surface to which the stand is mounted is sufficiently strong.
- Position the stand in the correct location. Mark the holes and drill into the surface.
- Place the stand directly over the holes and then fix the stand to the surface using M12 bolts.

Buried Flange:

- Cast 2 foundations 300mm with minimum dimensions of L150 x W150 x D350mm below the surface.
- Once concrete is set follow steps 1-3 as per flange detail above.
- Fill hole with grout and replace slabs to finish of bollard

Cast In:

- Remove pavement and excavate 2 holes to minimum dimensions of L150 x W150 x D350mm.
- Position your stand in the correct position ensuring correct height and then prop the stand securely.
- Fill the hole with concrete up to the level of the underside of the pavement ensuring a good smooth surface finish.
- Remove props, replace the paving slabs, and ensure that they are well bedded in.



Product Options:

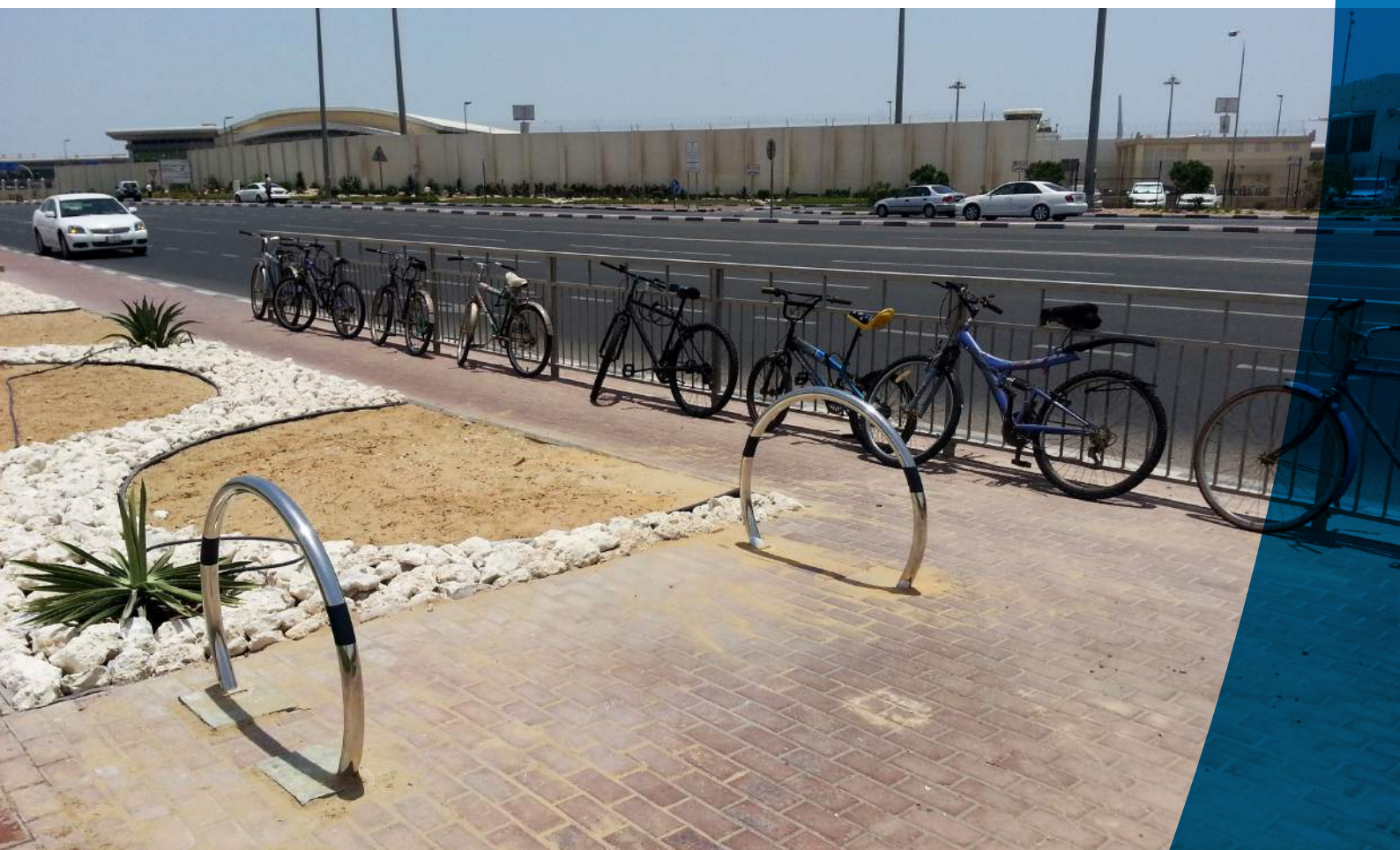
Grade
316L
304L

Specify:

Kent Swansea Cycle Rack KSAC1000; 1000mm long; Grade 316L Stainless Steel;
Bright Satin Finish; Surface Mounted.

Bright Satin
Cold Rolled Electro Polished
Satin Finish 320 grit
Shot Peened
Bright Peened

Choose from
Surface Mounted
Visible Flange
Buried Flange or
Cast In



Overview

The Kent Swansea Cycle Racks are 1000mm wide by 1000mm high. They are manufactured from Grade 316L Stainless Steel and this Circular Cycle Rack is a design led alternative to the more common and standard stainless steel cycle rack designs. The robust design allows 2 bicycles to be locked in position per rack.

Maintenance

Stainless Steel:

Clean the stainless steel components using warm water with a mild detergent with a non-abrasive cloth or sponge. Heavier stains may require the use of a nylon-scouring pad or a stainless steel cleaner. To remove paint or graffiti use a cloth and Alkaline or solvent paint strippers according to type of paint. In the case of a bead blasted finish, where abrasive cleaning is required, always use a random circular rubbing action with a cloth. In the case of brushed finishes the surface consists of uniform fine 'scratches' running in one direction so where abrasive cleaning is required always use a straight back and forward rubbing action in the direction of the grain using soap and warm water. Rust spots or 'tea stains' can occur on the surface of the material, these are normally caused by contamination from ordinary mild steel, particularly in areas where construction work has been undertaken. Such stains can be removed using Rust Remover 410. In cases where the surface is severely stained because of severe environmental conditions or scratched due to misuse, it may still be possible to restore the original finish using chemicals such as Oxalic Acid solution. There are many stainless steel polishes available to enhance the surface finish. We recommend Mister Stainless Ltd. as a provider for stainless steel cleaning products.