

Kent Angle Edging L





KENT ANGLE EDGING L-150/100/6

Kent Angle Edging L (KAEL 150/100/6) is a Stainless/ Corten Edging for landscapes which need a robust 90 degree edging system. The edging is suitable for use in soft and hard borderline landscapes whether raised or level. Polishing is available for visible facades also.

These Angle Edges come in 2990mm lengths and are made from 6mm thick steel as standard. Variations in 8mm & 10mm are available.

The top edge can have a flat top or a bull nose finish (best for raised edgings)

The Angle can also be manufactured in curved or corner sections for an architectural finish .

Features:

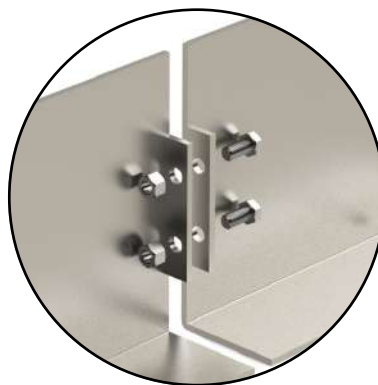
- 90 Degree Angle
- Grade 304 / 316 Stainless Steel
- Corten Steel
- 6-10mm Thick Steel
- Curves & Corners Available
- Polished Visible Facades



Corten or Stainless



M12 Chemical Anchor



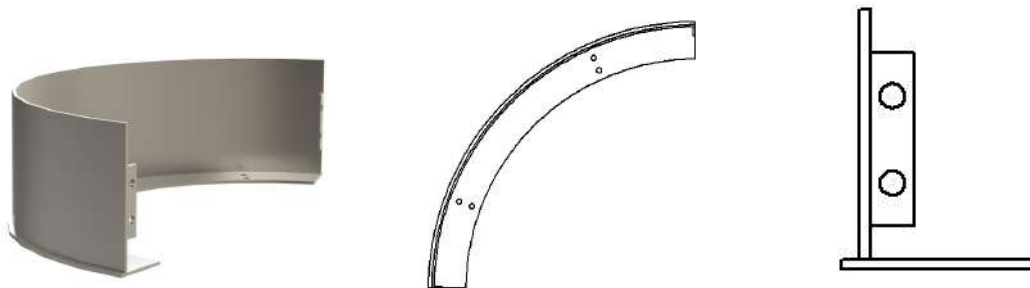
M12 Hex Bolt



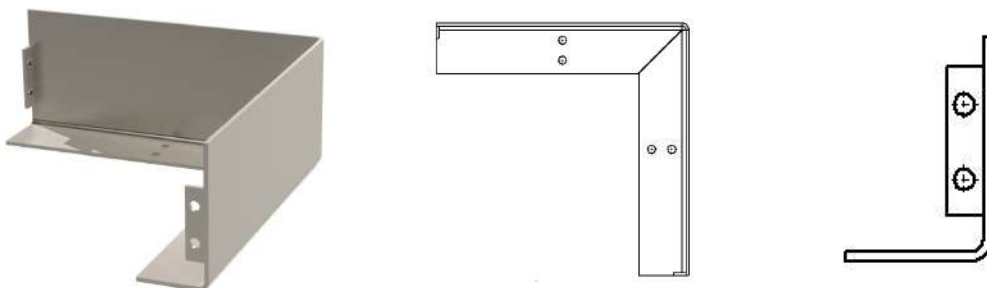
Flat Top or Bull Nose

KENT ANGLE EDGING-L 150/100/6

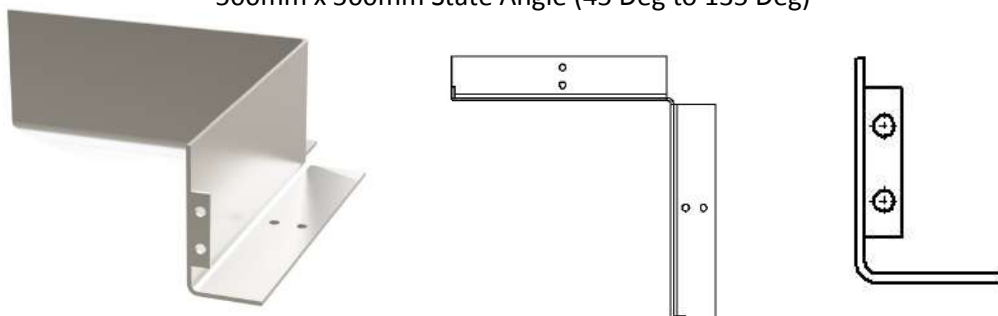

Product Code	Length	Height	Thickness	Width
Kent Angle Edging L KAEL-150/100/6	2990mm	150mm	6mm	100mm
Kent Angle Edging L KAEL-200/100/6	2990mm	200mm	6mm	100mm
Kent Angle Edging L KAEL-250/100/6	2990mm	250mm	6mm	100mm
Kent Angle Edging L KAEL-300/150/6	2990mm	300mm	6mm	150mm
Kent Angle Edging L KAEL-250/100/8	2990mm	250mm	8mm	100mm
Kent Angle Edging L KAEL-200/100/10	2990mm	200mm	10mm	100mm



Curved Section: Append (CS) Kent Angle Edging KAE-150/100/6 (CS) 1,000mmR
State Radius 500mm to 10,000mm



Outside Corner Section: Append (OC) Kent Angle Edging KAE-150/100/6 (OC) 90 Deg
500mm x 500mm State Angle (45 Deg to 135 Deg)



Inside Corner Section: Append (IC) Kent Angle Edging KAE-150/100/6 (IC) 90 Deg
500mm x 500mm State Angle (45 deg to 135 Deg)



KENT ANGLE EDGING L 150/100/6

Specify

Choose your steel:
 Grade 304 Stainless steel
 Grade 316 Stainless steel
 Corten Steel

(See **page 5** for more detail)

Customise your size, or go with our standard 150mm x 100mm x 6 mm
 (See **size chart** on **page 3** for dimensions)

Specify:
 Kent Angle Edging L (KAEL-150/100/6); Grade 316 Stainless Steel; L:2990mm, W: 100mm, Height:150mm: Steel Thickness: 6mm; Flat Top Edge.

Choose your steel Thickness:
 6mm
 8mm
 10mm

Choose your top edge finish:
 Flat Top
 Bullnose

Options

- 6mm Thick Steel
- 8mm Thick Steel
- 10mm Thick Steel
- Polished Visible Facade
- Grade 304L Stainless Steel
- Grade 316L Stainless Steel
- Corten Steel



Stainless Steel Maintenance

Clean the stainless steel components using warm water with a mild detergent with a non abrasive cloth or sponge. Heavier stains may require the use of a nylon scouring pad or a stainless steel cleaner. To remove paint or graffiti (or light concrete splashes) use a cloth and alkaline or solvent paint strippers according to type of paint.

For Satin Finish Stainless try to follow the direction of the grain when cleaning vigorously or polishing. For Bead Blasted Finish use a circular motion.

Rust spots or 'tea stains' can occur on the surface of the material, these are normally caused by contamination from ordinary mild steel, particularly in areas where construction work has been undertaken. Where contamination of the stainless has occurred from ordinary mild steel coming into contact with the stainless, use Rust Remover 410. In cases where the surface is severely stained as a result of severe environmental conditions or scratched due to misuse, it may still be possible to restore the original finish using chemicals such as Oxalic Acid solution. There are many stainless steel polishes available to enhance the surface finish.

Corten Steel Maintenance

Corten steel is similar in strength to Stainless Steel grade 304 and grade 316 – so similar thicknesses of edging can be interchanged on a project. There is a non-uniform patina on the surface that has a rust-like colour but in fact protects the steel below from corrosion. The patina makes it resistant to graffiti and stickers – and any future remedial work can disappear over time as the oxidation forms a new patina over these areas.

As a result Corten should need no cleaning regime after installation.



**KENT ANGLE EDGING L-150/100/6****Choosing Your Steel: Grade 304 vs. 316 Stainless Steel**

The last thing our we want for our customers is to have to deal with staining or rust on their Kent Stainless Steel products. If your product is to be exposed to harsh or coastal environments , we recommend upgrading to grade 316L stainless steel which extends the life span of the product for years more. Consider this fact when planning a future project.

Grade 304L Stainless Steel

304L stainless steel is the most common form of stainless steel used around the world. It contains between 16 and 24 percent chromium and up to 35 percent nickel, as well as small amounts of carbon and manganese. 304 can withstand corrosion from most oxidizing acids. That durability makes 304 easy to sanitize, and therefore ideal for kitchen and food applications. It is also common in buildings, décor, and site furnishings. However, it is susceptible to corrosion from chloride solutions, or from saline environments like the coast.

Benefits

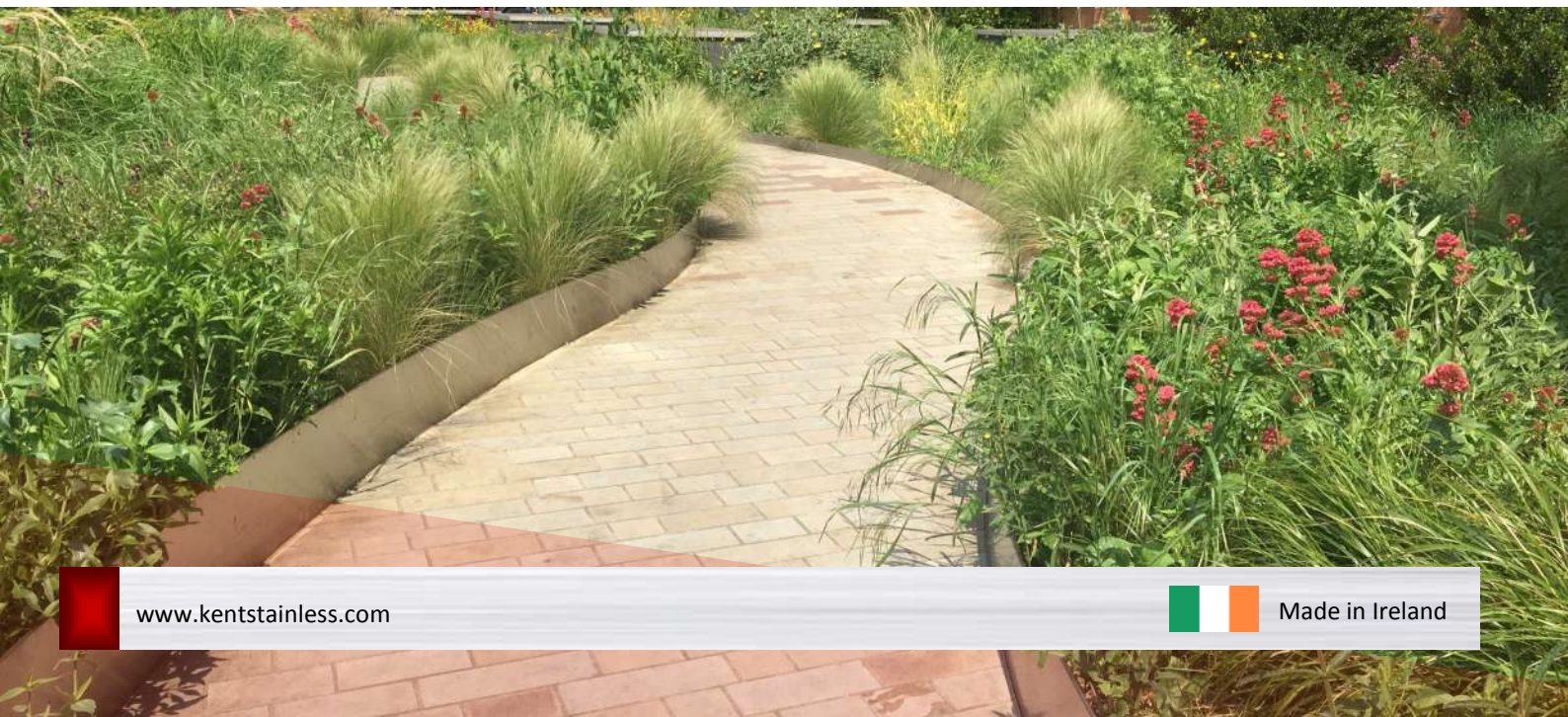
- Lowest Cost Corrosion resistant option
- Resistant to oxidation
- Low maintenance
- Durable and strong

Grade 316L Stainless Steel

316L grade is the second-most common form of stainless steel. It has almost the same physical and mechanical properties as 304 stainless steel, and contains a similar material make-up. The key difference is that 316 stainless steel incorporates about 2 to 3 percent molybdenum. The addition increases corrosion resistance, particularly against chlorides and other industrial solvents. 316 stainless steel is commonly used in many industrial applications involving processing chemicals, as well as high-saline environments such as coastal regions and outdoor areas where de-icing salts are common.

Benefits

- Superior Corrosion resistance
- Chlorine Resistant
- Low maintenance
- Durable and strong





Kent Stainless Ltd
Ardcavan, Wexford, Ireland

TEL NO: +353 53 9143216
UK FREEPHONE: 0800 376 8377
FAX: +353 53 9141802
WEB: www.kentstainless.com
EMAIL: info@kentstainless.com

