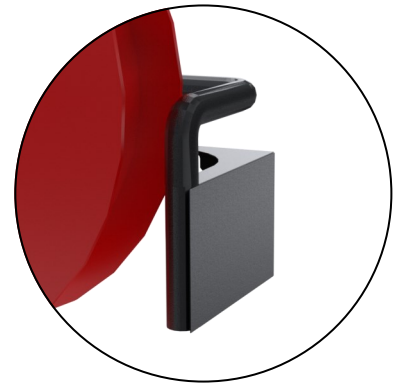
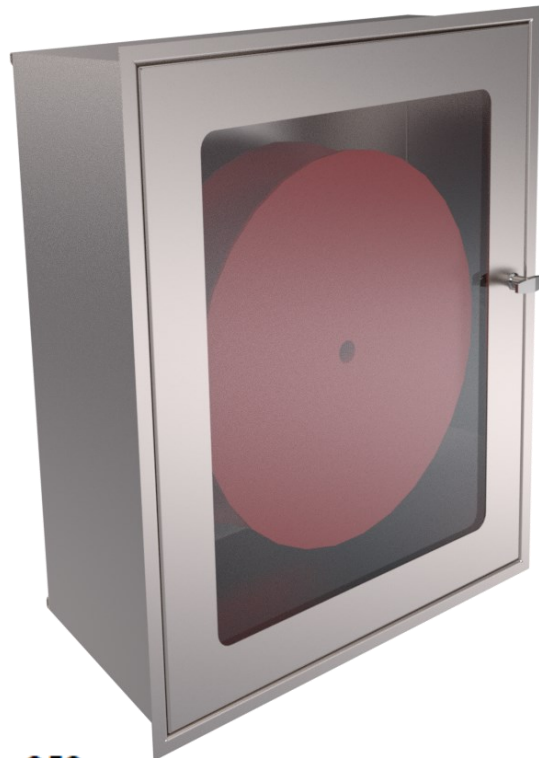


Kent Hose Reel Cabinets, (KHC 850) are designed specifically to store hose reels.

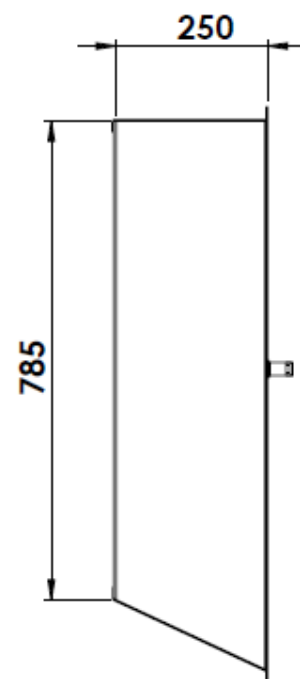
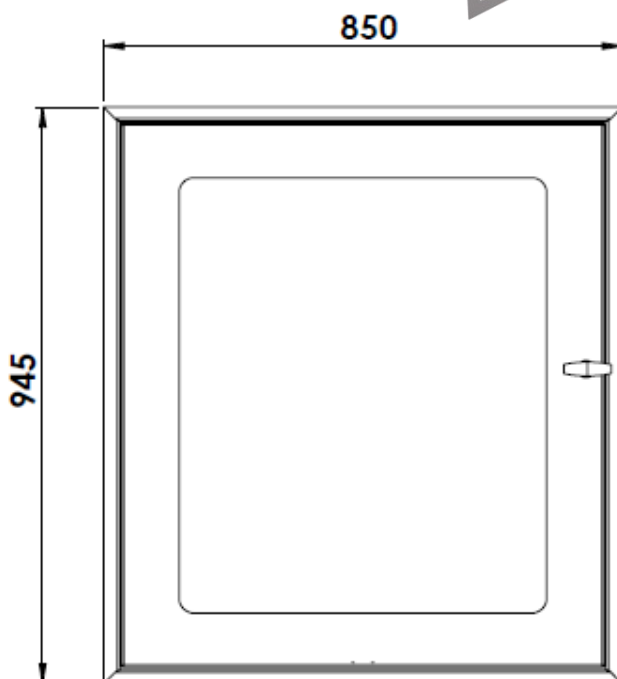
The cabinets come with a lockable door and can also come with an optional swing arm mechanism to easily extend the reel. The cabinet can be easily cleaned with minimal crevices throughout the design.

Features

- Grade 304L/316L Stainless Steel
- Satin finish 320 grit polished
- Glass panel door
- Designed to fit hose reels
- Optional swing arm mechanism
- Custom sizes available



Optional: Swing Arm



Product Code	Width	Depth	Height
KHC 850	850	250	945

Specify

Choose your steel:
 Grade 304L Stainless steel
 Grade 316L Stainless steel

Customise your size
 go with our standard size
 850x250x945mm
 (see page 1 for details) or
 specify your own dimensions

Specify:
 Kent Hose Reel Cabinet (KHC850); Grade 304L Stainless Steel; 850x250x945mm;
 2mm Thick Steel; Satin Finish 320 Grit Polish.

Choose your thickness:
 2mm
 3mm

