

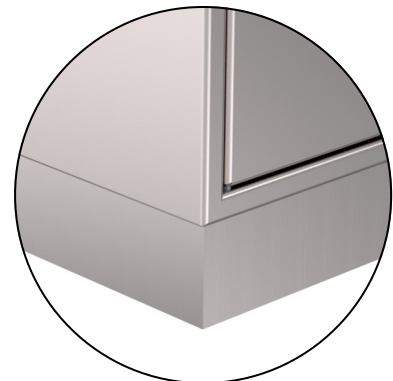
Kent Locker Cabinets (KLC940) are designed to store and house personal belongings and other items.

The locker unit features shelves, garment hooks, adjustable legs, the option of skirting and the sizes and number of doors are fully customisable.

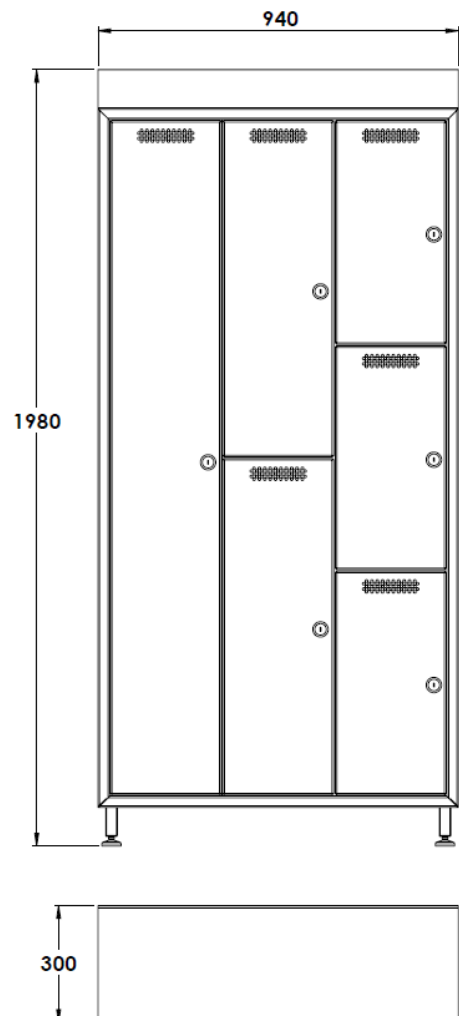
The cabinets can be easily cleaned with minimal crevices throughout the design.

Features

- Grade 304L/316L Stainless Steel
- Satin finish 320 grit polished
- Lockable doors
- Customs sizes available
- Sloped top optional
- Skirting available



Skirting



Product Code	Length	Depth	Height
KLC 940	940	300	1980

Specify

Choose your steel:
 Grade 304L Stainless steel
 Grade 316L Stainless steel

Customise your size
 go with our standard size
 940x300x1980mm
 (see page 1 for details) or
 specify your own dimensions

Choose your thickness:
 2mm
 3mm

Specify:
 Kent Locker Cabinet (KLC940); Grade 304L Stainless Steel; 940x300x1980; 2mm Thick Steel;
 Satin Finish 320 Grit Polish; 3 Door; Adjustable legs.

Choose your doors:
 3 Door (3 x Full length)
 6 Door (6 x Half length)
 9 Door (9 x one third length)
 Or specify your own number
 and/or combination.

Features:
 Adjustable legs
 Adj. legs w/Skirting
 Shelving
 Garment Hooks