



KENT T9 Potable Water Unit

The **Kent Paver T9 In Ground Potable Water Unit** is an ideal product for trading areas, open air areas with events and exhibitions where potable water connections are required. In most cases it is used, for example, for a coffee vendor who needs to refill a potable water tank temporarily and then shuts the cover. This model, Type 9 has a 300mm x 600mm top recessed cover.

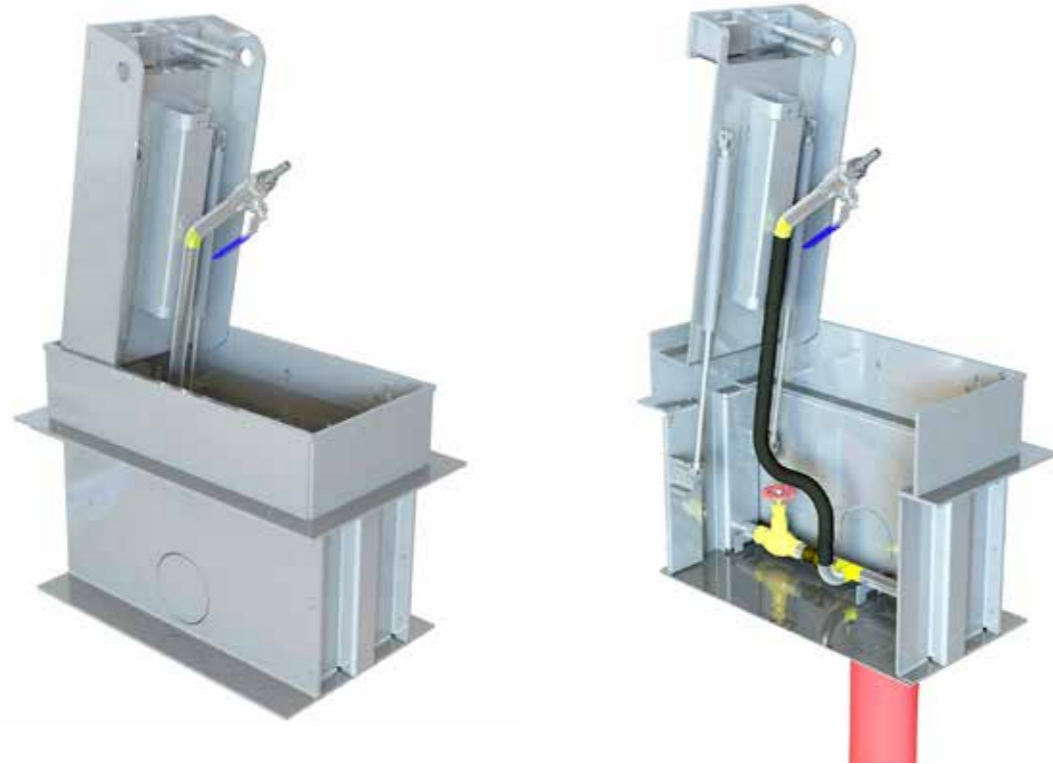
It includes a Non Return Valve to prevent potential back flow of containment water.

A 3/4" Mains Water inlet connects to our 1/2" Water Lever Bib Tap.

It has a Gate valve to shut off / control flow. The lid remains open during operation. The unit must have a drain connection – ideally to a 110mm bottom outlet.

The hinged recessed cover ensures the units are unobtrusive when not in-use. The covers are manufactured in accordance with FACTA and BS EN124 standards. The covers are suitable for 60mm deep paving blocks and are manufactured to meet required loadings. They are fabricated in grade 316 stainless steel as standard.

- Features**
- ❑ Gas Rams
 - ❑ 1 Bib tap
 - ❑ Slam lock
 - ❑ Secondary secure holding down lock
 - ❑ 110mm diameter drain outlet point



Product	Visible Frame Size	Unit Depth	Inlet (Ø)	Drainage
KIGPWU300/600/450-T8	300mm x 600mm	450mm	3/4" Mains Water	110mm

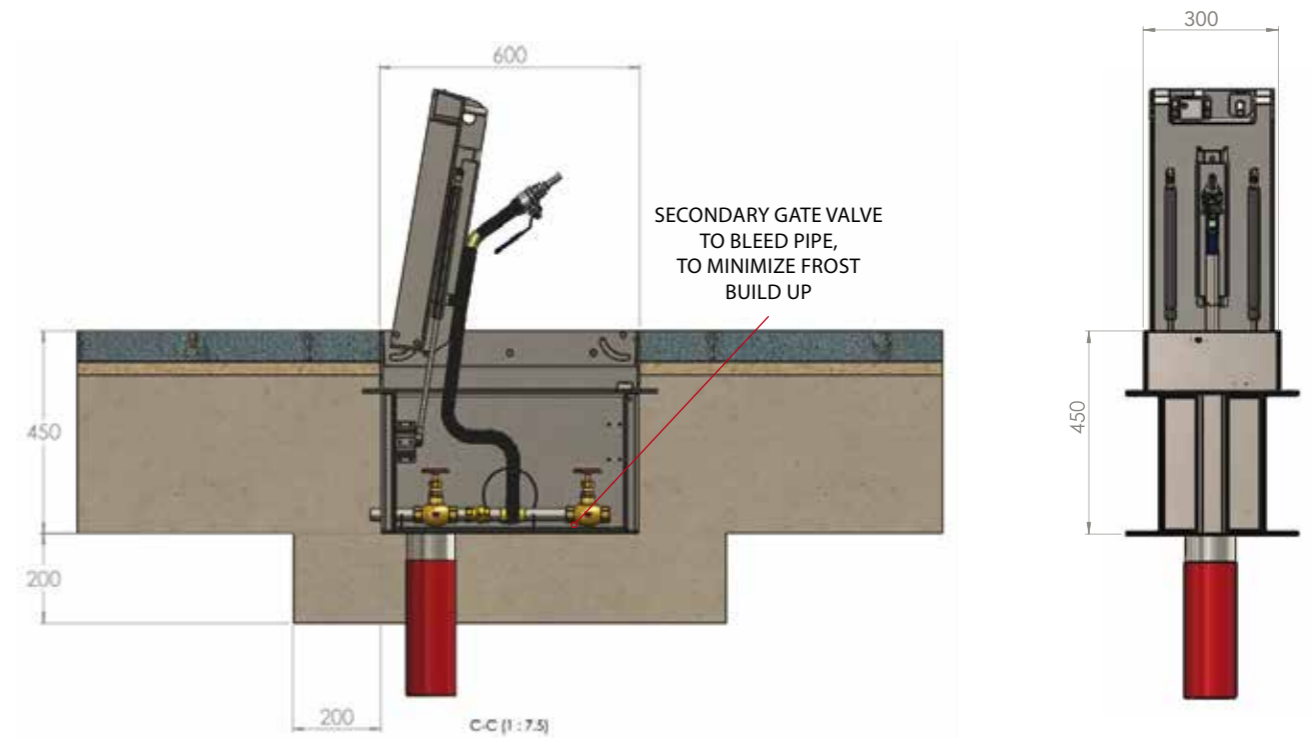
Specify Kent KIGPWU– Type 9 Potable Water Unit; 300mm x 600mm top; with a 450mm depth; Grade 316 Stainless Steel; Loading FACTA B; With Bib Tap, With 110mm bottom drainage outlet



44 Ton Truck
FACTA B Loading
EN124 B125 Loading



KENT T9 Potable Water Unit



Food Trucks use this box to Refill their Potable Water Tank during the day to make their Coffee/Tea & Wash Up.