



Conical Planter



Kent Conical Planter

KCLP-800/850

Specify:

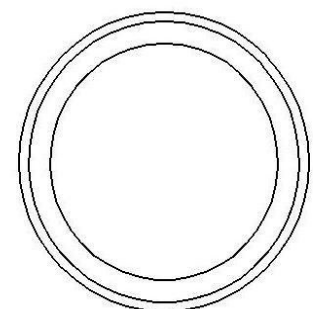
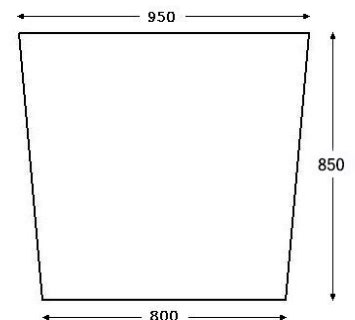
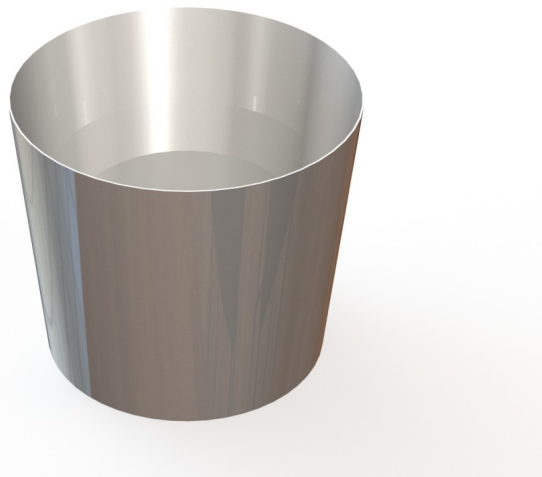
Kent Conical Planter KCLP-800/850; 850mm overall height; 800mm x 800mm base; Grade 316L Stainless Steel; 3mm thick wall; Satin Finish 320 Grit Polished.

The Kent Conical Planter KCLP-800/850 is manufactured from Grade 316L Stainless Steel. The external finish of the planter is a Satin 320 Grit Polished (as standard) giving a RA value of less than 0.5. It has a 3mm thick wall throughout. The planter has an 800mm x 800mm diameter base, that stretches to 950mm x 950mm diameter at the top of the planter. Its overall height is 850mm and it has a leaned effect. It is easy to install & has low maintenance.



Features

- Grade 316L Stainless Steel.
- Satin 320 Grit Polished, giving RA value less than 0.5.
- 3mm thick wall
- Low Maintenance
- Easy Installation

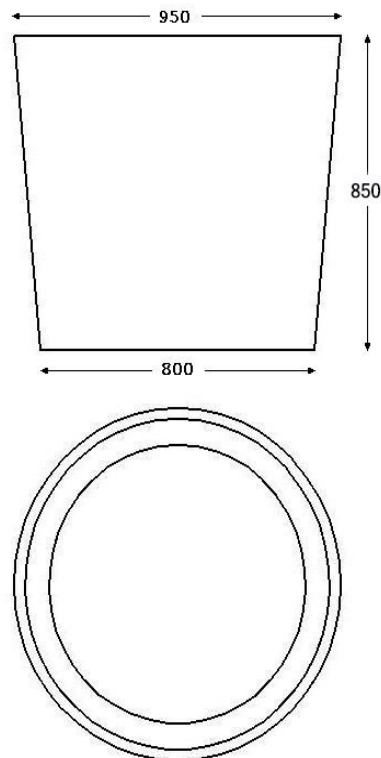


Product Dimensions:

Reference	Diameter	Height
Kent Conical Planter KCLP 800/850	800mm	850mm
Kent Conical Planter KCLP 800/1000	800mm	1000mm
Kent Conical Planter KCLP 600/850	600mm	850mm
Kent Conical Planter KCLP 600/1000	600mm	1000mm

Fixing Details:

All of Kent's Planters are freestanding units. There is no fitting required but they can be fitted on request.



Kent Conical Planter KCLP-800/850

Product Options

Kent Conical Planter KCLP 800/850
Kent Conical Planter KCLP 800/1000
Kent Conical Planter KCLP 600/850
Kent Conical Planter KCLP 600/1000

Specify

Kent Conical Planter KCLP-800/850; 850mm overall height; 800mm x 800mm diameter base; Grade 316L Stainless Steel; 3mm thick wall; Satin Finish 320 Grit Polished.

Grade
316L
304L

Bright Satin
Satin 320 Grit Polished
Bright Peened
Shot Peened
Cold Rolled Electropolished

Overview

The Kent Conical Planter KCLP-800/850 is manufactured from Grade 316L Stainless Steel. The external finish of the planter is a Satin 320 Grit Polished (as standard) giving a RA value of less than 0.5. It has a 3mm thick wall throughout. The planter has an 800mm x 800mm diameter base, that stretches to 950mm x 950mm diameter at the top of the planter. Its overall height is 850mm and it has a leaned effect. It is easy to install & has low maintenance.

Maintenance

Stainless Steel:

Clean the stainless steel components using warm water with a mild detergent with a non-abrasive cloth or sponge. Heavier stains may require the use of a nylon-scouring pad or a stainless steel cleaner. To remove paint or graffiti use a cloth and Alkaline or solvent paints and strippers according to type of paint. In the case of a bead blasted finish, where abrasive cleaning is required, always use a random circular rubbing action with a cloth. In the case of brushed finishes the surface consists of uniform fine 'scratches' running in one direction so where abrasive cleaning is required always use a straight back and forward rubbing action in the direction of the grain using soap and warm water. Rust spots or tea stains can occur on the surface of the material, these are normally caused by contamination from ordinary mild steel, particularly in areas where construction work has been undertaken. Such stains can be removed using Rust Remover 410. In cases where the surface is severely stained because of severe environmental conditions or scratched due to misuse, it may still be possible to restore the original finish using chemicals such as Oxalic Acid solution. There are many stainless steel polishes available to enhance the surface finish. We recommend Mister Stainless Ltd. As a provider for stainless steel products.



