

EALING BROADWAY PLANTER

KEBP – 4130

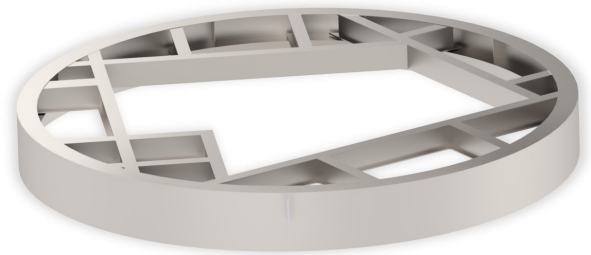


EALING BROADWAY PLANTER KEBP – 4130

The Kent Ealing Broadway Planter KEBP-4130 has a stainless steel frame and shroud with Iroko timber elements for seating. The Ealing Broadway Planter is 4130mm wide x 810mm high from the bottom of the stainless steel to the top of the back rest, these measurements can be modified to suit the location. Its robust and innovative design makes it ideal for public areas. It was manufactured especially for the London Borough of Ealing to modify the existing concrete seating planters on Melbourne Avenue. The original design utilises the concrete planters as a base however this can be modified to suit any requirements.

Features:

- Grade 316L Stainless Steel
- SC certified Iroko timber
- Bead blasted finish



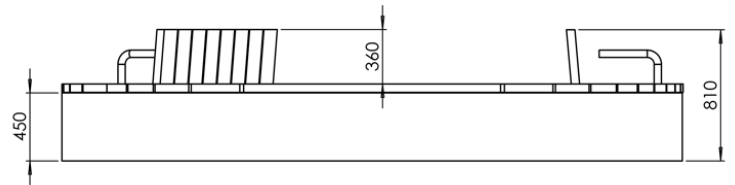
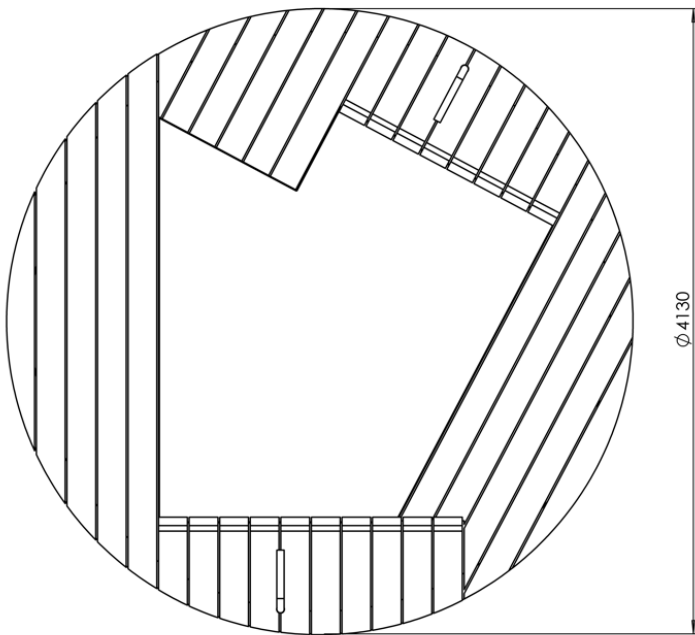


EALING BROADWAY PLANTER KEBP – 4130

Product Dimensions

Product Code	Height	Length	Width
Ealing Broadway Planter KEBP – 4130	810mm	4130mm	4130mm

Drawings



Specification

Specify:

Kent Ealing Broadway Planter Seating KEBP-4130;

Diameter: 4130mm; Height: 810mm ; Grade 316L Stainless Steel; Bead blasted Finish; Iroko timber seating.

Choose your steel & Thickness

- Pre-Weathered CorTen Steel
- Grade 304 Stainless steel
- Grade 316 Stainless steel
- Powder Coated
- Faux Imitation Corten

Choose your Finish

- Bright Satin
- 320 Grit Satin Finish
- Bright Peened
- Shot Peened
- Tiger Bronze
- Imitation CorTen
- Antique Copper
- Metallic Black

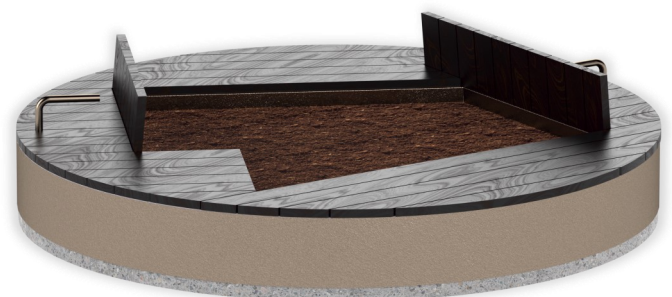
*Customise your size, or go with
our standard 4130mm /
810mm Sizes*



Stainless



Faux Imitation CorTen



Tiger Bronze

Finishes

These Planters can be manufactured from :

- Grade 316L Stainless Steel
- Grade 304L Stainless
- Powder Coated
- Pre-Weathered Corten Steel
- Faux Imitation Corten



Click on Finish image



Bright Peened



Bright Satin



Satin Finish 320 Grit Polished



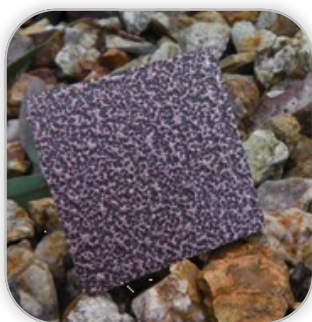
Shot Peened



Tiger Bronze



Imitation Corten



Antique Copper



Metallic Black



Pre-Weathered Corten

Maintenance

Stainless Steel Maintenance

Clean the stainless steel components using warm water with a mild detergent with a non-abrasive cloth or sponge. Heavier stains may require the use of a nylon-scouring pad or a stainless steel cleaner.

To remove paint or graffiti use a cloth and Alkaline or solvent paint strippers according to type of paint. In the case of a bead blasted finish, where abrasive cleaning is required, always use a random circular rubbing action with a cloth.

In the case of brushed finishes the surface consists of uniform fine 'scratches' running in one direction so where abrasive cleaning is required always use a straight back and forward rubbing action in the direction of the grain using soap and warm water.

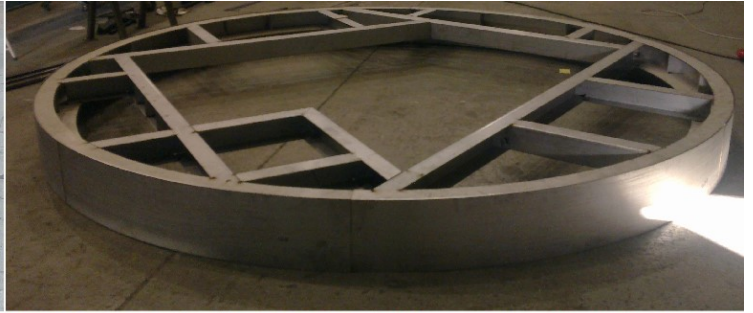
Rust spots or 'tea stains' can occur on the surface of the material, these are normally caused by contamination from ordinary mild steel, particularly in areas where construction work has been undertaken. Such stains can be removed using Rust Remover 410.

In cases where the surface is severely stained because of severe environmental conditions or scratched due to misuse, it may still be possible to restore the original finish using chemicals such as Oxalic Acid solution. There are many stainless steel polishes available to enhance the surface finish.

Corten Steel Maintenance

Corten steel is similar in strength to Stainless Steel grade 304 and grade 316 – so similar thicknesses of edging can be interchanged on a project. There is a non-uniform patina on the surface that has a rust-like colour but in fact protects the steel below from corrosion. The patina makes it resistant to graffiti and stickers – and any future remedial work can disappear over time as the oxidation forms a new patina over these areas. As a result Corten should need no cleaning regime after installation.

A partner you can rely on



Contact us

Phone: +353 53 914 3216

UK Freephone: 0800 376 8377

USA: 718 374 7391

Email: info@kentstainless.com

Address: Ardcavan, Wexford, Ireland, Y35 CRW2

