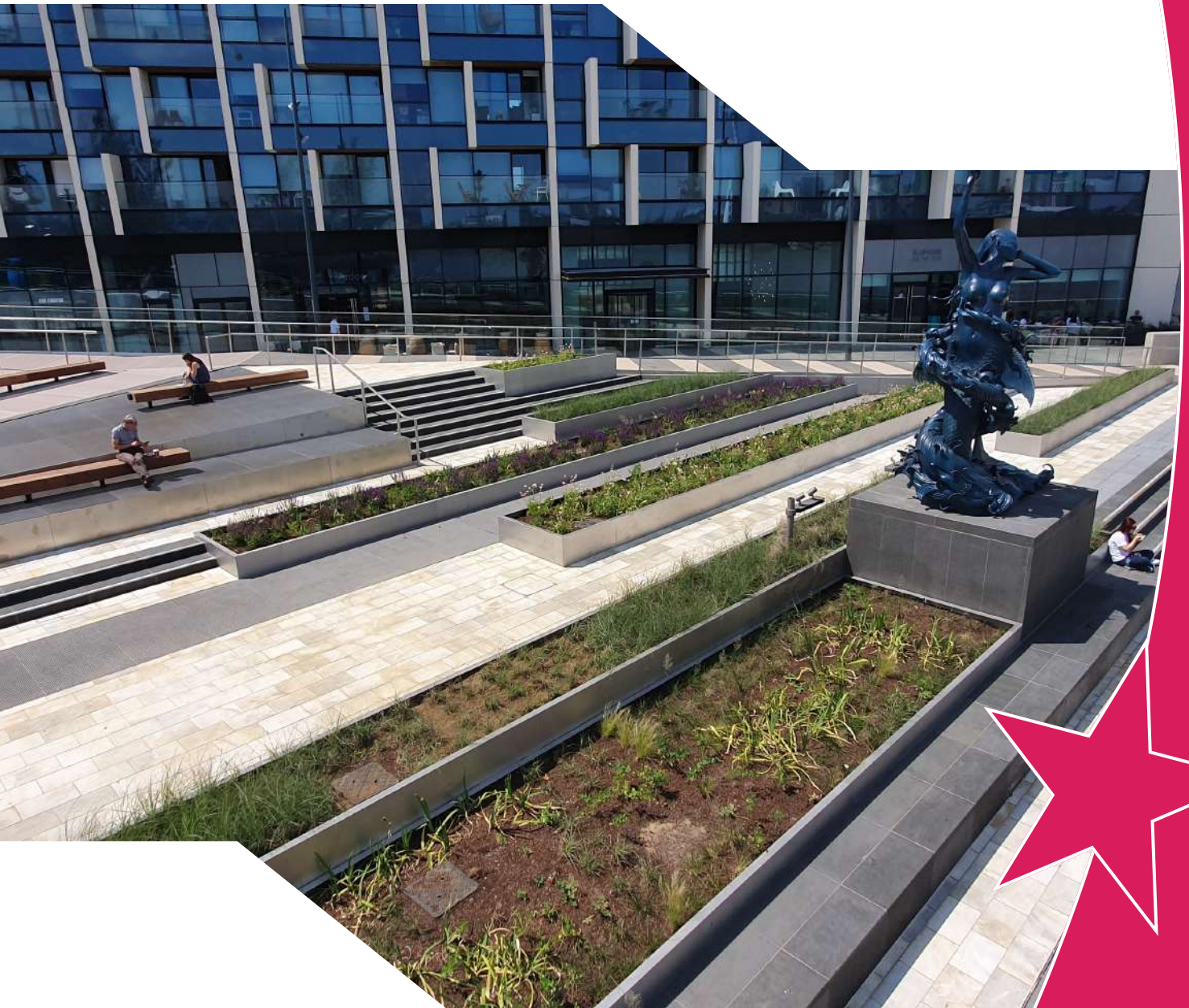




Kent Greenwich Planter



Kent Greenwich Planter KGP-580

Specify

Kent Greenwich Planter KGP-580; 1310mm width x 580mm height; Grade 316L Stainless Steel; Satin finish 320 Grit Polished.

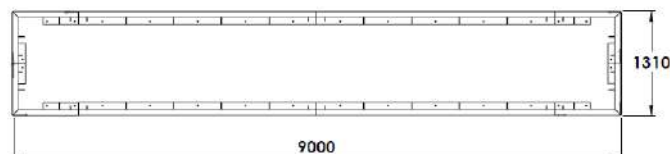
Description:

The Kent Greenwich Planter KGP-580 is manufactured from Grade 316L Stainless Steel to maximize vandal resistance and minimise maintenance. It has a satin finish 320 grit polished, however, there are other finishes available. The Greenwich planter is 580mm high x 1310mm wide, these measurements can be modified to suit the location. Its robust and innovative design makes it ideal for public areas.

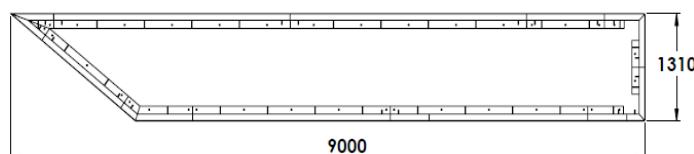
Features:

- Grade 316L Stainless Steel
- Satin Finish 320 Grit Polished
- Low Maintenance

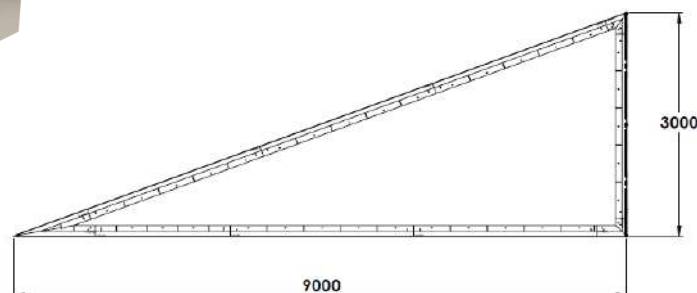
Rectangular



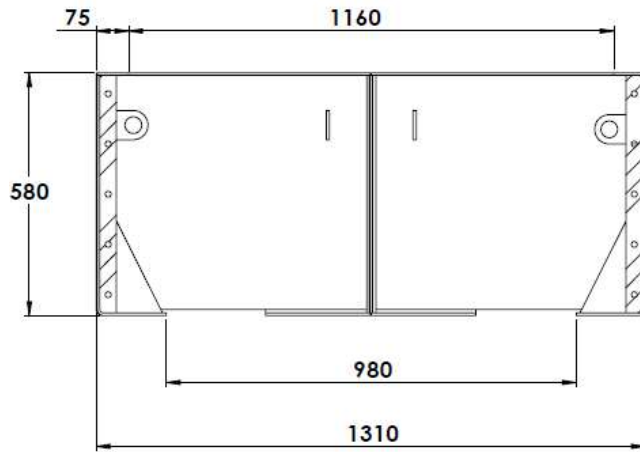
Trapezoid



Triangular



Kent Greenwich Planter KGP-580



M12 Chemical Anchor



Welded Top Edge

Product Dimensions:

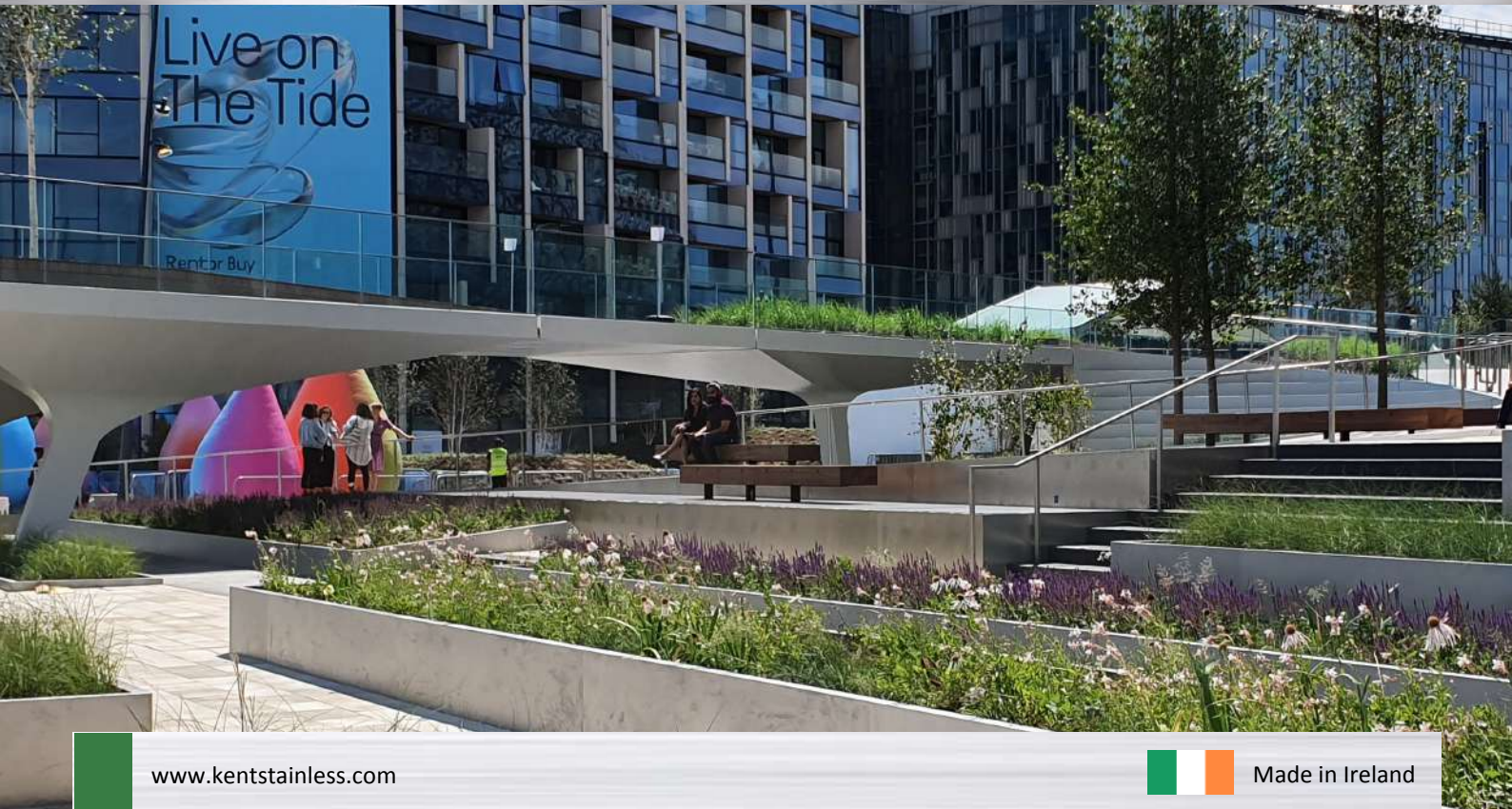
Reference	Length	Width	Height
Kent Greenwich Planter (KGP-580) RECTANGULAR	9000	1310	580
Kent Greenwich Planter (KGP-580) TRAPEZOID 35°	9000	1310	580
Kent Greenwich Planter (KGP-580) TRIANGULAR 90°	9000	3000	580



Maintenance

Stainless Steel:

Clean the stainless steel components using warm water with a mild detergent with a non-abrasive cloth or sponge. Heavier stains may require the use of a nylon-scouring pad or a stainless steel cleaner. To remove paint or graffiti use a cloth and Alkaline or solvent paints and strippers according to type of paint. In the case of a bead blasted finish, where abrasive cleaning is required, always use a random circular rubbing action with a cloth. In the case of brushed finishes the surface consists of uniform fine 'scratches' running in one direction so where abrasive cleaning is required always use a straight back and forward rubbing action in the direction of the grain using soap and warm water. Rust spots or tea stains can occur on the surface of the material, these are normally caused by contamination from ordinary mild steel, particularly in areas where construction work has been undertaken. Such stains can be removed using Rust Remover 410. In cases where the surface is severely stained because of severe environmental conditions or scratched due to misuse, it may still be possible to restore the original finish using chemicals such as Oxalic Acid solution. There are many stainless steel polishes available to enhance the surface finish. We recommend Mister Stainless Ltd. As a provider for stainless steel products.



Specify:

Kent Greenwich Planter KGP-580; 1310mm width x 580mm height; Grade 316L Stainless Steel; Satin Finish 320 Grit Polished.

Features:

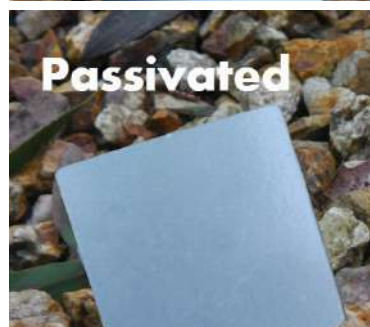
- Grade 316L Stainless Steel
- Satin Finish 320 Grit Polished
- Low Maintenance

The Greenwich Planter can be manufactured from :

- Grade 316L Stainless Steel
- Grade 304L Stainless Steel

Finishes Available

- Electropolished
- Passivated
- Satin Finished 320 Grit Polished
- Bright Satin Finish
- Bright Peened Finish
- Shot Peened
- Powdercoated
- Metallic Black Finish
- Corten Steel Finish
- Imitation Corten



**Kent Greenwich
Planter KGP-580**

