

KILDARE BENCH



Kent Kildare Bench KKB1500

Specify:

Kent Kildare Bench KKB1500; 1500mm long; Curved with 2350mm outside radius; Grade 316L Stainless Steel; Shot Peened; Surface Mounted.

The Kent Kildare Bench is a 1500mm long, curved stainless steel bench. The bench is manufactured from heavy duty stainless steel throughout and has a Shot Peened finish. This bench utilises hidden fixings so that it can be surface mounted without unsightly visible fixings bolts.

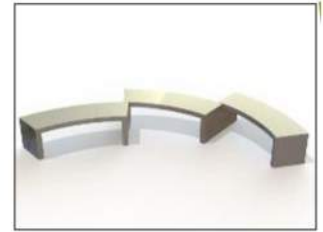
This bench was first used in a school project in Kildare, Ireland and the client added cast models of a dog, a book and a football to the Kent bench.



Hidden fixings ensure a neat finish



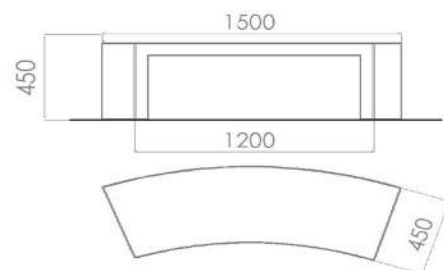
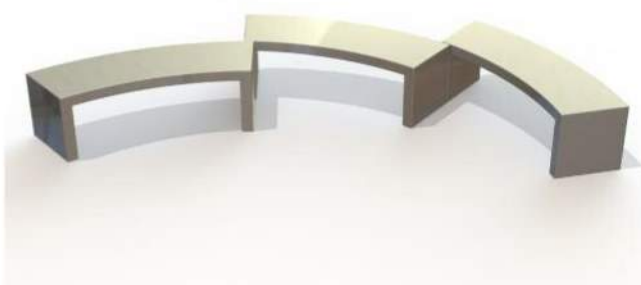
Overview



Modular design allows for curved options

Features

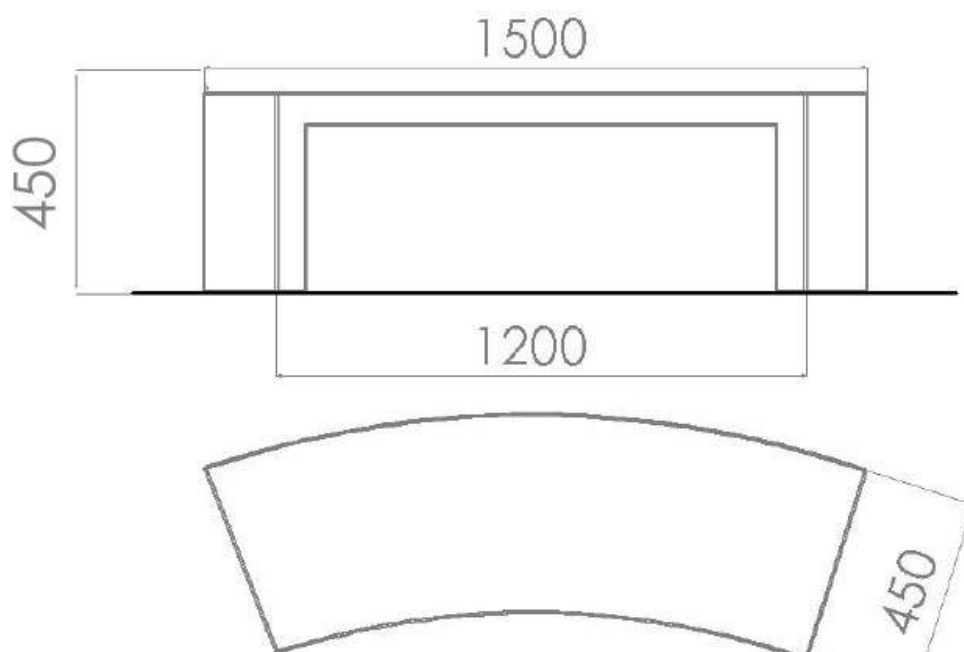
- ◆ Shot peened finish
- ◆ Grade 316L Stainless Steel 3mm thick
- ◆ Low maintenance
- ◆ Hidden fixing detail
- ◆ Vandal resistance





Product Dimentions:

Reference	Height	Width	Length
Kent Kildare KKB1500	450mm	450mm	1500mm
Kent Kildare KKB2000	450mm	450mm	2000mm



Kent Kildare Bench KKB1500

Visible Flange:

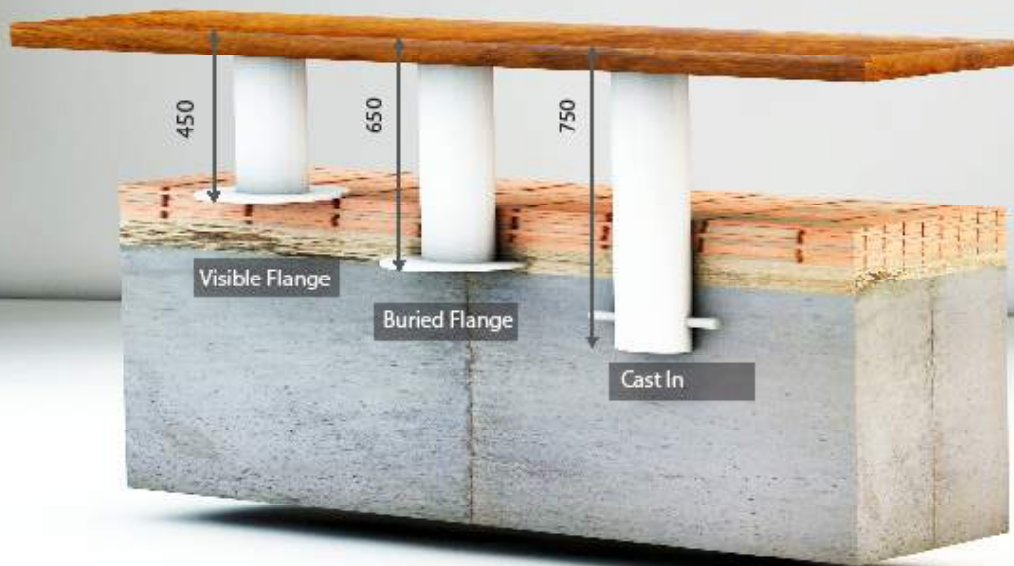
- Ensure that the surface to which the bench is mounted is sufficiently strong.
- Position the bench in the correct location. Mark the holes and drill into the surface.
- Place the bench directly over the holes and then fix the bench to the surface using M12 bolts.

Buried Flange:

- Cast a foundation 300mm with minimum dimensions of L350 x W350 x D350mm below the surface.
- Once concrete is set follow steps 1-3 as per flange detail above.
- Fill hole with grout and replace slabs to finish of bollard

Cast In:

- Remove pavement and excavate a hole to minimum dimensions of L350 x W750 x D350mm.
- Position your bench in the correct position ensuring correct height and then prop the bench securely.
- Fill the hole with concrete up to the level of the underside of the pavement ensuring a good smooth surface finish.
- Remove props, replace the paving slabs, and ensure that they are well bedded in.



Product Options:

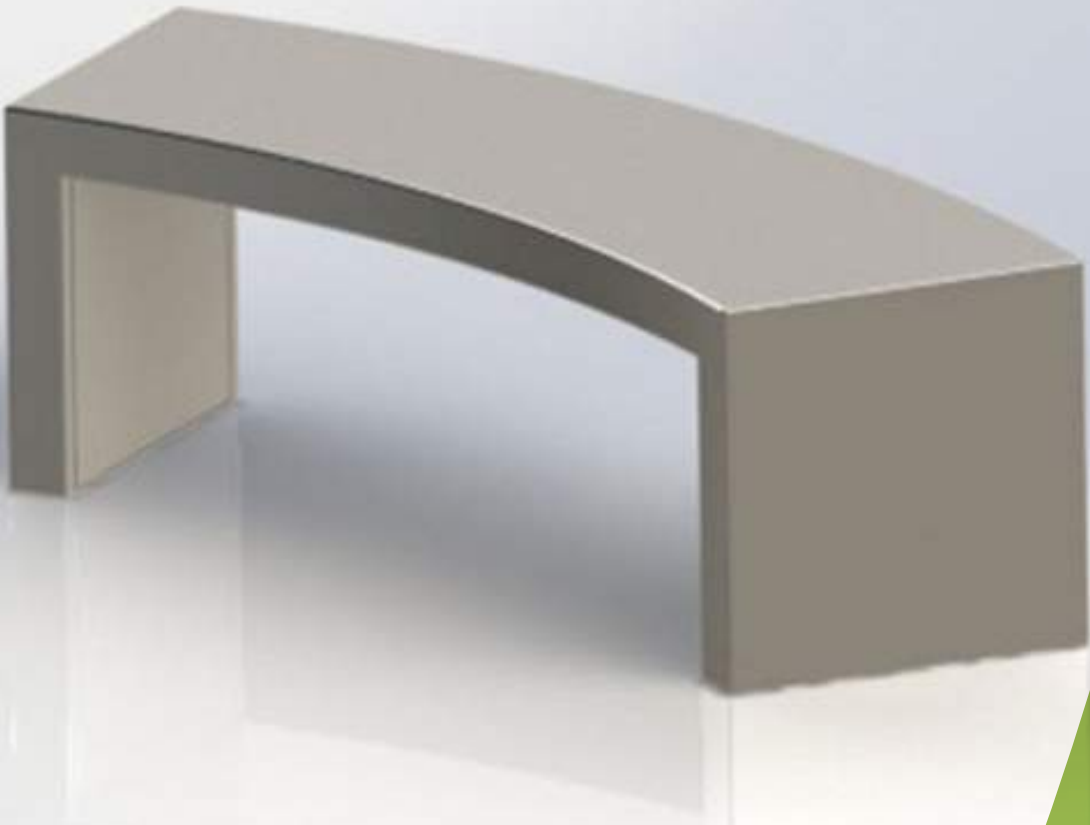
Choose from 1500mm,
2000mm, or your custom
size

Choose from grade
304L or grade 316L
stainless steel

Specify:
Kent Kildare Bench KKB1500; 1500mm long; Curved with a 2350mm
outside radius; Grade 316L Stainless Steel; Shot Peened Finish, Visible Flange

Choose from
Cold Rolled Electro Polished
Satin Finish 320 grit
Bright Satin
Shot Peened or
Bright Peened

Choose from
Visible Flange
Buried Flange or
Cast In



Kent Kildare

Bench KKB1500

Overview

The Kent Kildare Bench KKB1500 is a 1500mm long, curved stainless steel bench. The bench is manufactured from heavy duty stainless steel throughout to maximise vandal resistance and minimise maintenance. The bench utilises hidden fixings so that it can be surface mounted without unsightly visible fixings bolts. The bench lends itself well to incorporate words, logos and symbols on various faces of the bench.

Maintenance

Stainless Steel:

Clean the stainless steel components using warm water with a mild detergent with a non-abrasive cloth or sponge. Heavier stains may require the use of a nylon-scouring pad or a stainless steel cleaner. To remove paint or graffiti use a cloth and Alkaline or solvent paint strippers according to type of paint. In the case of a bead blasted finish, where abrasive cleaning is required, always use a random circular rubbing action with a cloth. In the case of brushed finishes the surface consists of uniform fine 'scratches' running in one direction so where abrasive cleaning is required always use a straight back and forward rubbing action in the direction of the grain using soap and warm water. Rust spots or 'tea stains' can occur on the surface of the material, these are normally caused by contamination from ordinary mild steel, particularly in areas where construction work has been undertaken. Such stains can be removed using Rust Remover 410. In cases where the surface is severely stained because of severe environmental conditions or scratched due to misuse, it may still be possible to restore the original finish using chemicals such as Oxalic Acid solution. There are many stainless steel polishes available to enhance the surface finish. We recommend Mister Stainless Ltd. as a provider for stainless steel cleaning products.