

KENT SHOE STORE CABINETS

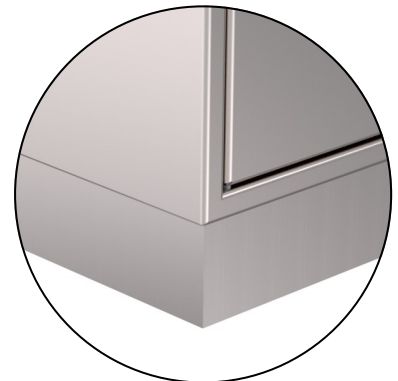
Kent Shoe Store Cabinets (KSSC1600) are designed to store and organise shoes within the gowning area.

The shoe store's come with adjustable legs with the option of skirting. The overall and compartment sizes can be adjusted to requirement, however, typical sizes are from 12—42 bays.

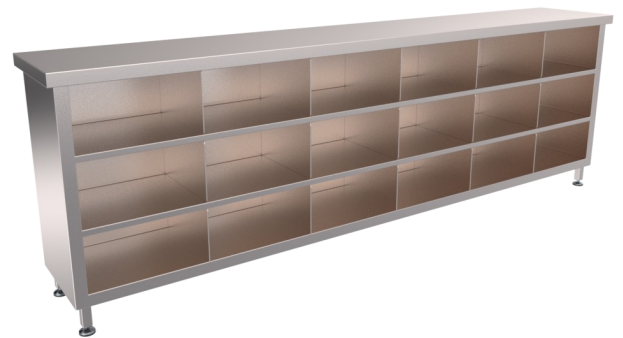
The cabinets can be easily cleaned with minimal crevices throughout the design.

Features

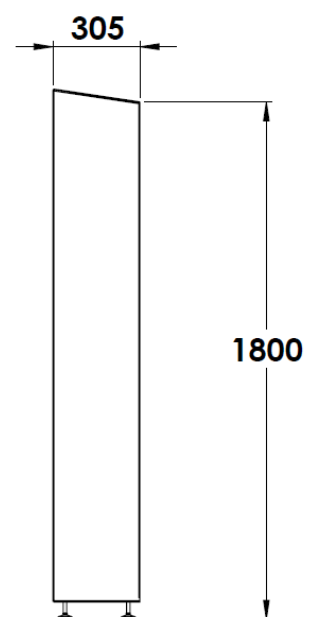
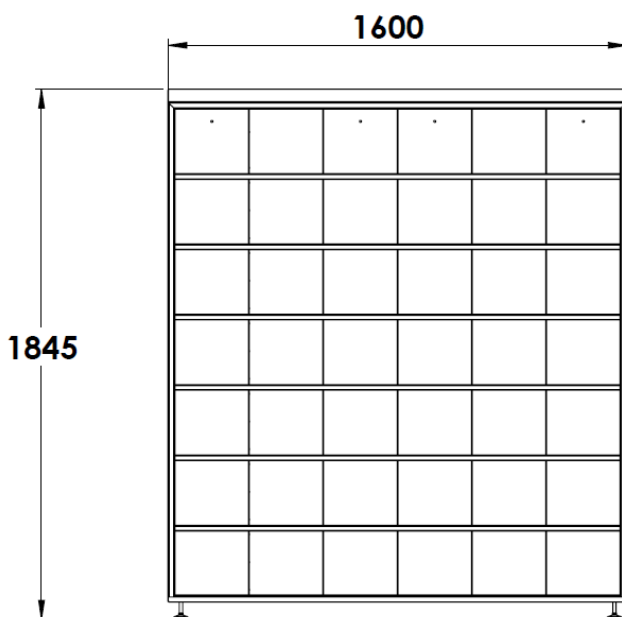
- Grade 304L/316L Stainless Steel
- Satin finish 320 grit polished
- Customs sizes available
- Sloped top optional



Skirting



Multiple variations available



Product Code	Length	Depth	Height	No. of Bays
KSSC 820	820	305	1100	12
KSSC 1080	1080	305	1355	20
KSSC 1340	1340	305	1600	30
KSSC 1600	1600	305	1845	42

Specify

Choose your steel:
Grade 304L Stainless steel
Grade 316L Stainless steel

Customise your size
go with our standard size
1600x305x1845mm
(see above for details) or
specify your own dimensions

Specify:
Kent Shoe Store Cabinet (KSSC1600); Grade 304L Stainless Steel; 1600x305x1845;
2mm Thick Steel; Satin Finish 320 Grit Polish; Adjustable legs,

Choose your thickness:
2mm
3mm

Features:
Adjustable legs
Adj. legs w/Skirting

