

Kent Studs & Strips Product Range



Kent
STAINLESS



TABLE OF CONTENTS

Introduction

Installation of studs.....	1
Maintenance of Stainless Steel.....	2
Specifying Studs & Strips.....	3

Tactile Warning Studs

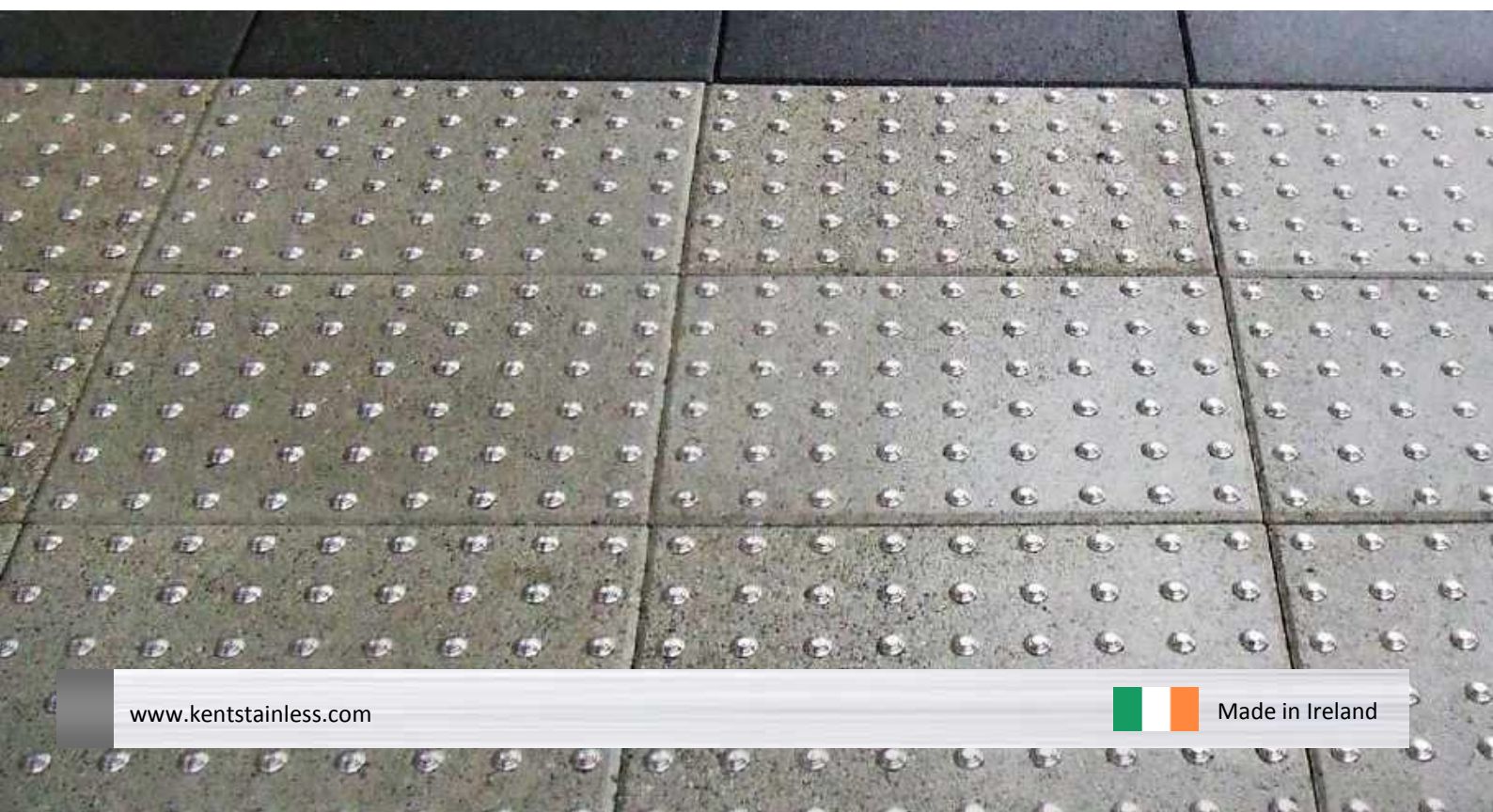
Tactile Warning Studs.....	6
Tactile Warning Studs (Multi Groove).....	8
Tactile Warning Studs (Resin Infill).....	10
Tactile Warning Strips.....	12

Demarcation Studs

Demarcation Studs.....	16
Criss Cross Demarcation Studs.....	18
Road Demarcation Studs.....	20
Pyramid Demarcation Studs.....	22

Anti Skate Studs

Anti Skate Swoosh Studs.....	26
Anti Skate Sphere Studs.....	28
Anti Skate Angle Studs.....	30
Anti Skate Fin Studs.....	32



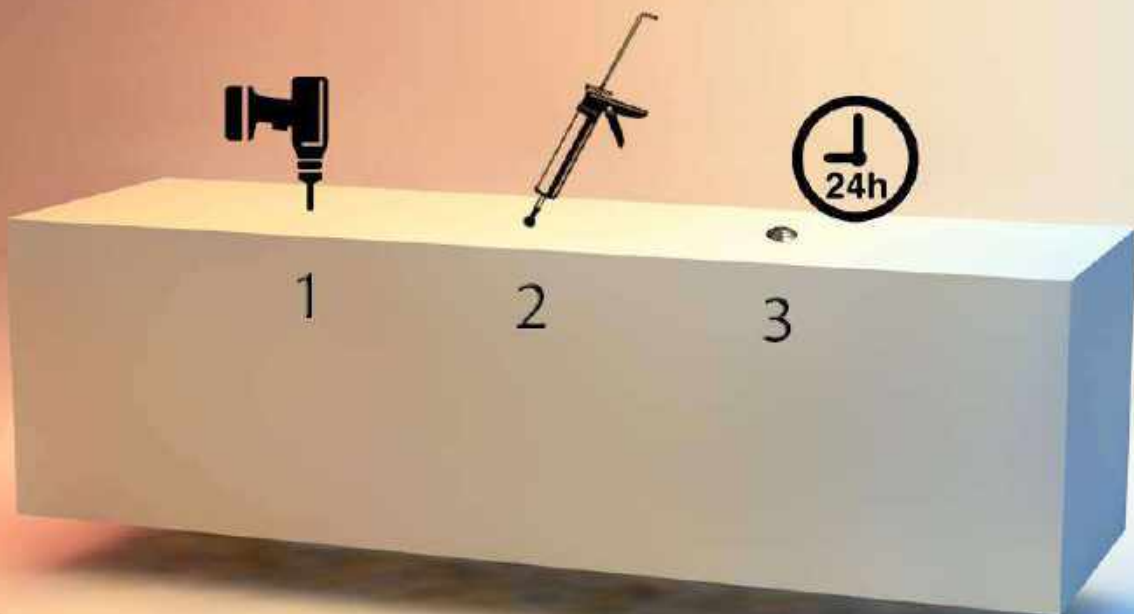


INSTALLATION

Kent
STAINLESS

Installation of Studs and Strips

- Step 1:** **Drill a 15mm Diameter hole 30mm deep (Size depends on the stud)**
- Step 2:** **Clean out the drilled hole**
- Step 3:** **Fill with chemical mortar (Kent Stainless recommend MIT-SE Mortar)**
- Step 4:** **Insert the tactile warning studs and leave to set for 24 hours**



Maintenance of Stainless Steel

Clean the stainless steel components using warm water with a mild detergent with a non-abrasive cloth or sponge. Heavier stains may require the use of a nylon-scouring pad or a stainless steel cleaner.

To remove paint or graffiti use a cloth and Alkaline or solvent paint strippers according to type of paint. In the case of a bead blasted finish, where abrasive cleaning is required, always use a random circular rubbing action with a cloth.

In the case of brushed finishes the surface consists of uniform fine 'scratches' running in one direction so where abrasive cleaning is required always use a straight back and forward rubbing action in the direction of the grain using soap and warm water.

Rust spots or 'tea stains' can occur on the surface of the material, these are normally caused by contamination from ordinary mild steel, particularly in areas where construction work has been undertaken. Such stains can be removed using Rust Remover 410.

In cases where the surface is severely stained because of severe environmental conditions or scratched due to misuse, it may still be possible to restore the original finish using chemicals such as Oxalic Acid solution. There are many stainless steel polishes available to enhance the surface finish.

We recommend Mister Stainless Ltd. as a provider for stainless steel cleaning products.

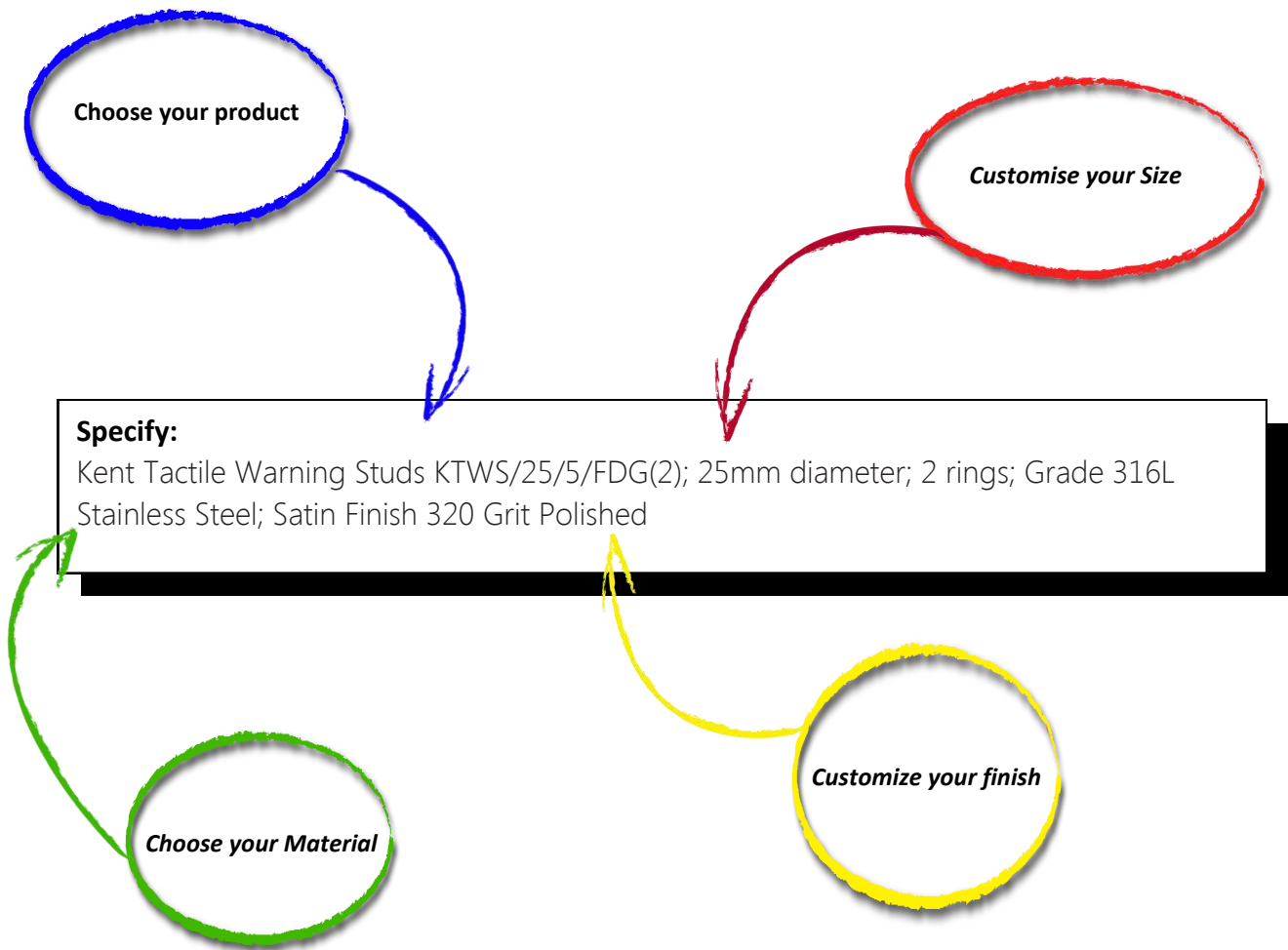




SPECIFYING STUDS

Kent
STAINLESS

How to Specify:



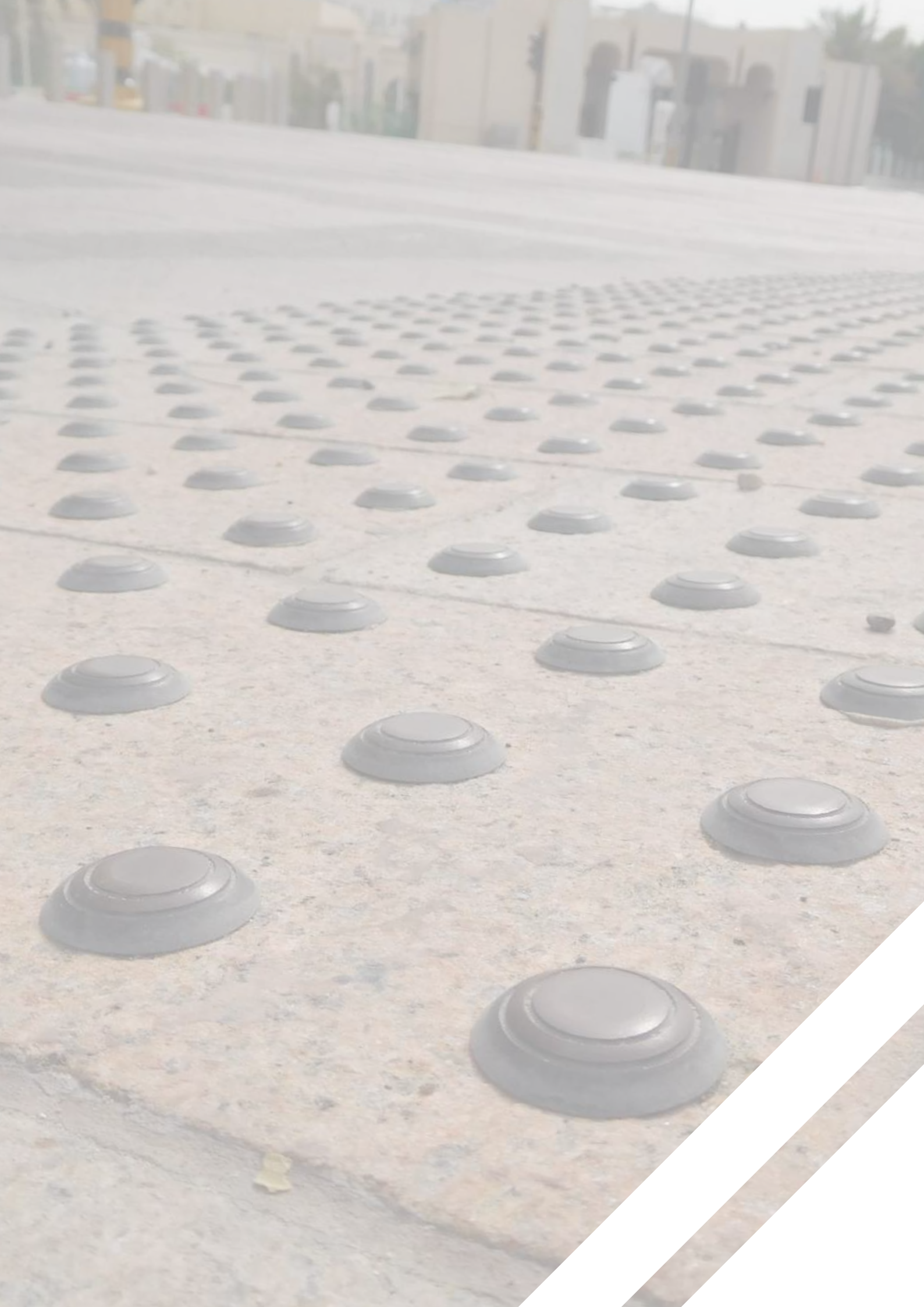
Kent Anti Skate Angle Studs



Kent Tactile Warning Studs



Kent Demarcation Studs





Tactile Warning Studs and Strips

Tactile Warning Studs..... 6

Tactile Warning Studs (Multi Groove).. 8

Tactile Warning Studs (Resin Infill)..... 10

Tactile Warning Strips..... 12

**KENT TACTILE WARNING STUD (KTWS/25/5/FDG)**

The Kent Tactile Warning Studs provide an underfoot warning to identify hazards and dangerous areas where there is a change in levels or where there is an unprotected opening such as open stairwells and platforms.

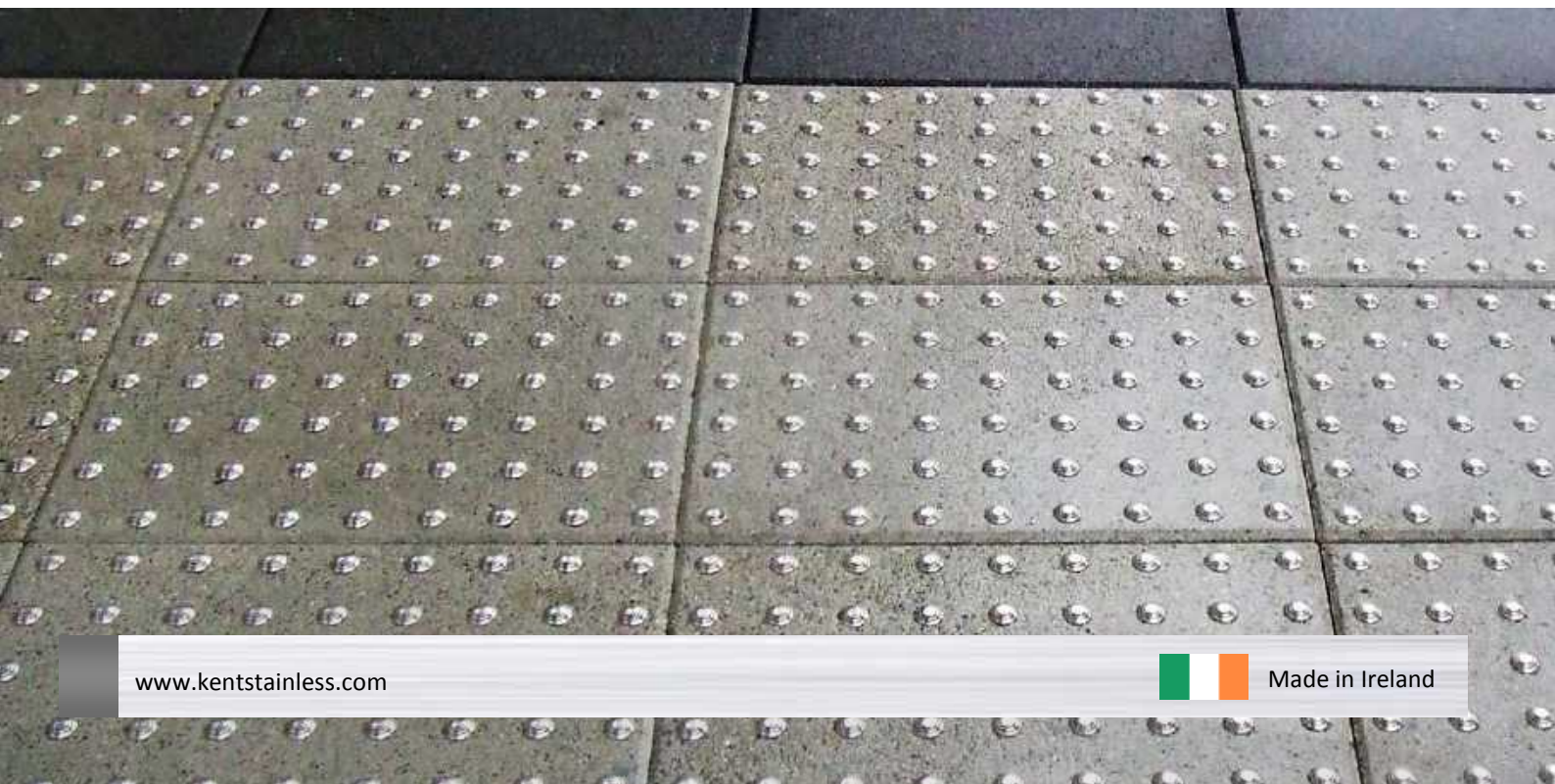
The stainless steel material is ideal for high-traffic pedestrian areas. The slip resistant design ensures the studs do not themselves become a hazard in wet or cold conditions.

Features:

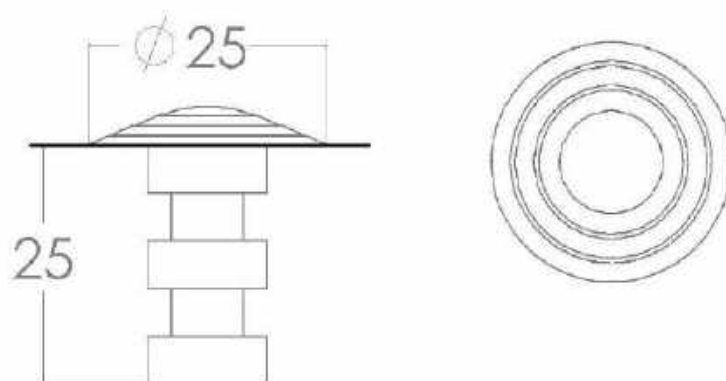
- Underfoot warning to identify hazards and dangerous areas
- Grade 316 Stainless steel
- Easy Installation
- Can be incorporated onto the full range of Kent Stainless seats and benches
- Slip resistant design

**Specify:**

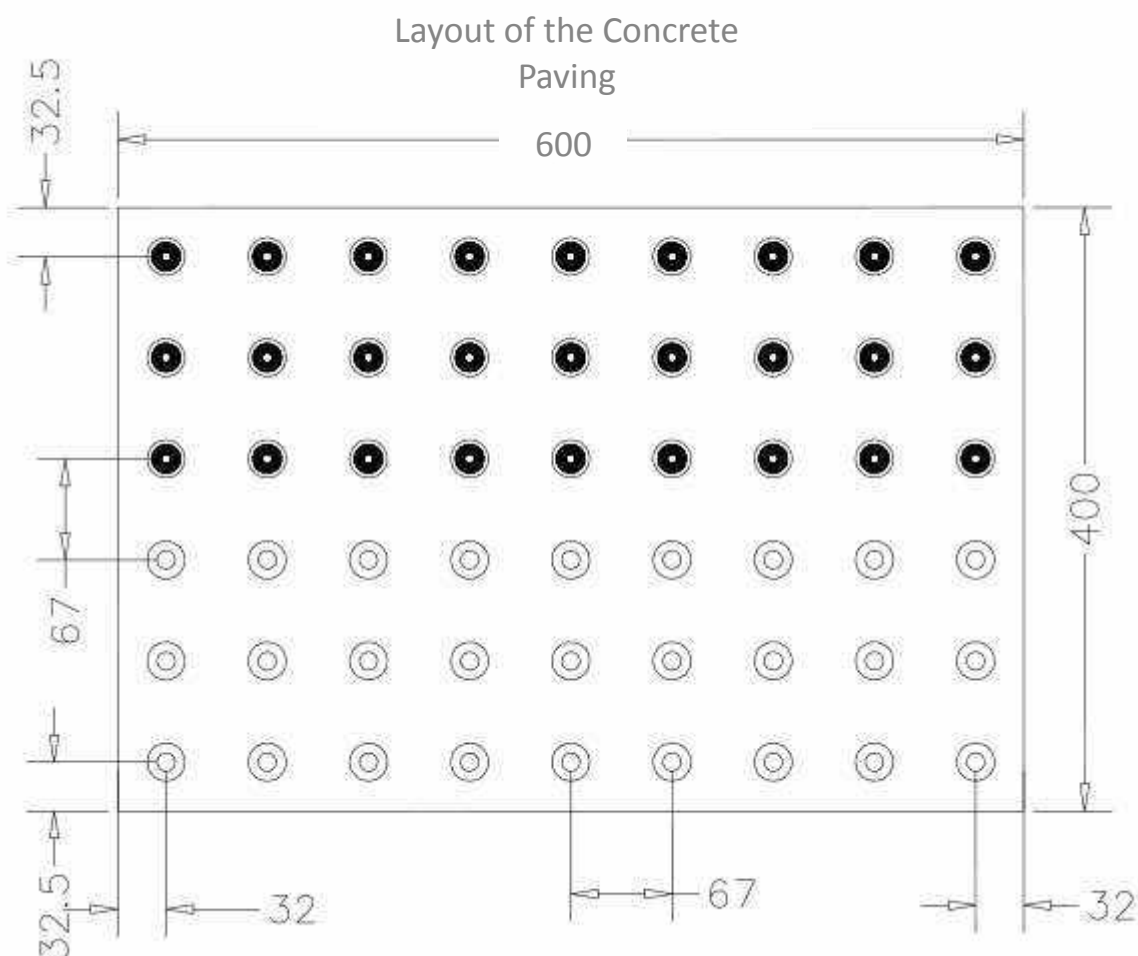
Kent Tactile Warning Stud KTWS/25/5/FDG; Grade 316L Stainless Steel; polished finish; 3 rings.



KENT TACTILE WARNING STUD (KTWS/25/5/FDG)



Product Code	Height	Diameter	Rings
Kent Tactile Warning Stud KTWS/25/5/FDG(2)	30mm	25mm	2
Kent Tactile Warning Stud KTWS/25/5/FDG(3)	30mm	25mm	3



**KENT TACTILE WARNING STUD MULTI GROOVE (KTWS/35/5/FDMG)**

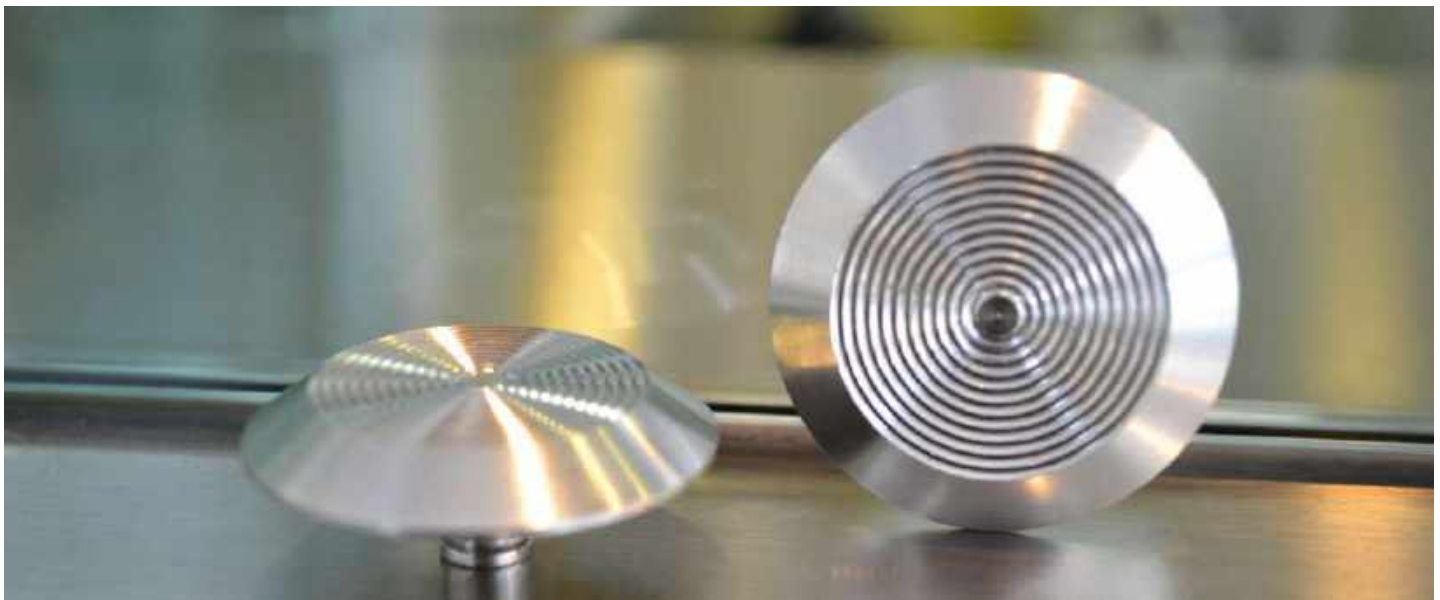
Kent Tactile Warning Studs (Flat Domed & Mult Grooved)
KTWS/35/5/FDMG; Grade 316L Stainless Steel; Satin Finish 320 Grit
Polished.

The Kent Tactile Warning Studs provide an underfoot warning to identify hazards and dangerous areas where there is a change in levels or where there is an unprotected opening such as open stairwells and platforms.

The stainless steel material is ideal for high-traffic pedestrian areas. The slip resistant design ensures the studs do not themselves become a hazard in wet or cold conditions.

Features:

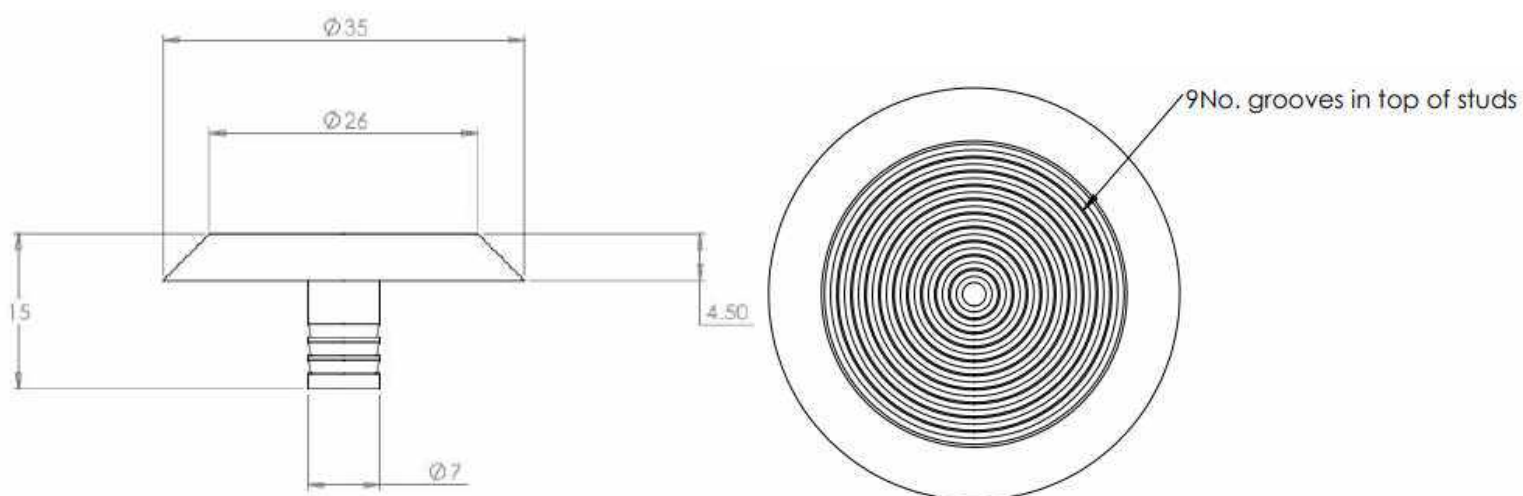
- Underfoot warning to identify hazards and dangerous areas
- Grade 316 Stainless steel
- Easy Installation
- Can be incorporated onto the full range of Kent Stainless seats and benches
- Slip resistant design

**Specify:**

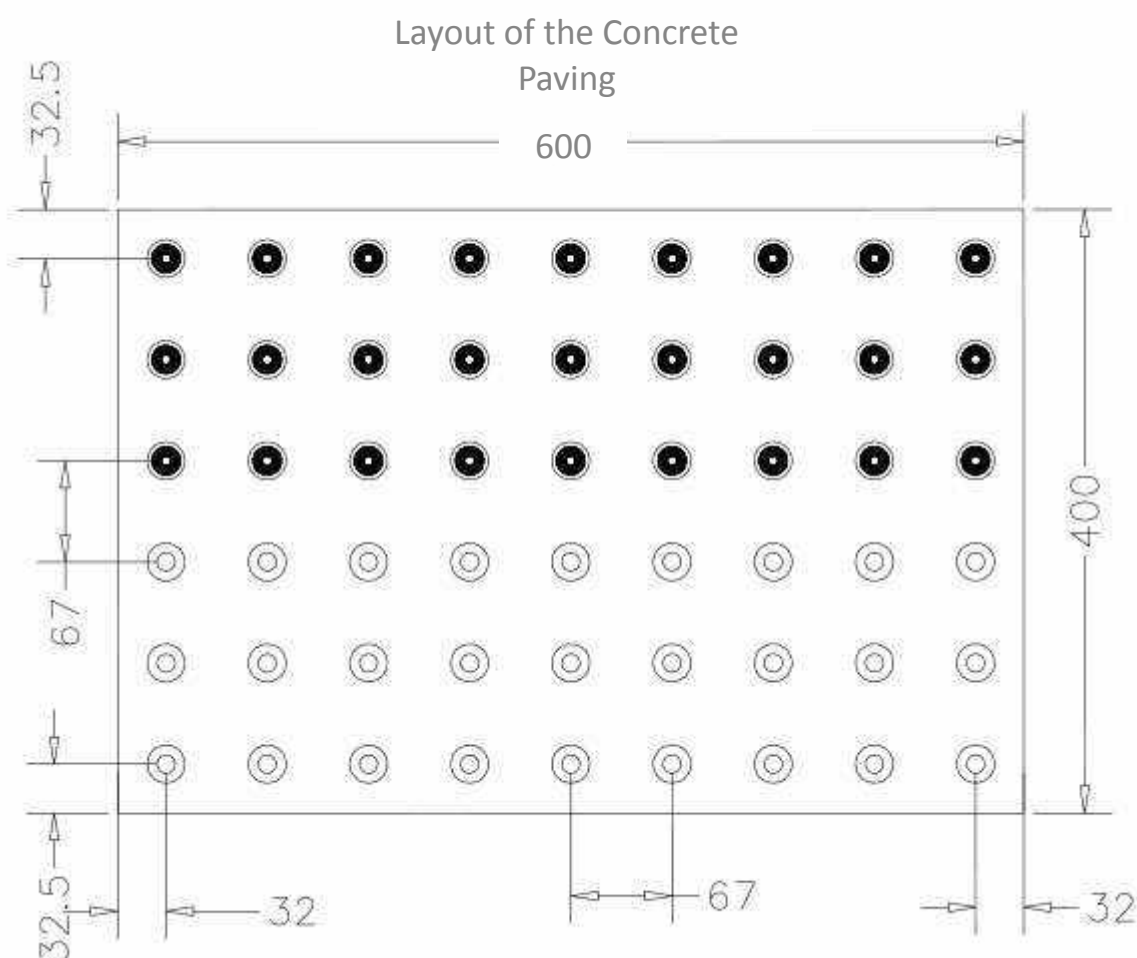
**Kent Tactile Warning Stud (Multi Groove) KTWS/25/5/FDMG;
Grade 316L Stainless Steel; polished finish; Multi Groove.**



KENT TACTILE WARNING STUD MULTI GROOVE (KTWS/35/5/FDMG)



Product Code	Height	Diameter	Rings
Kent Tactile Warning Stud Multi Groove KTWS/25/5/FDG(2)	15mm	35mm	9

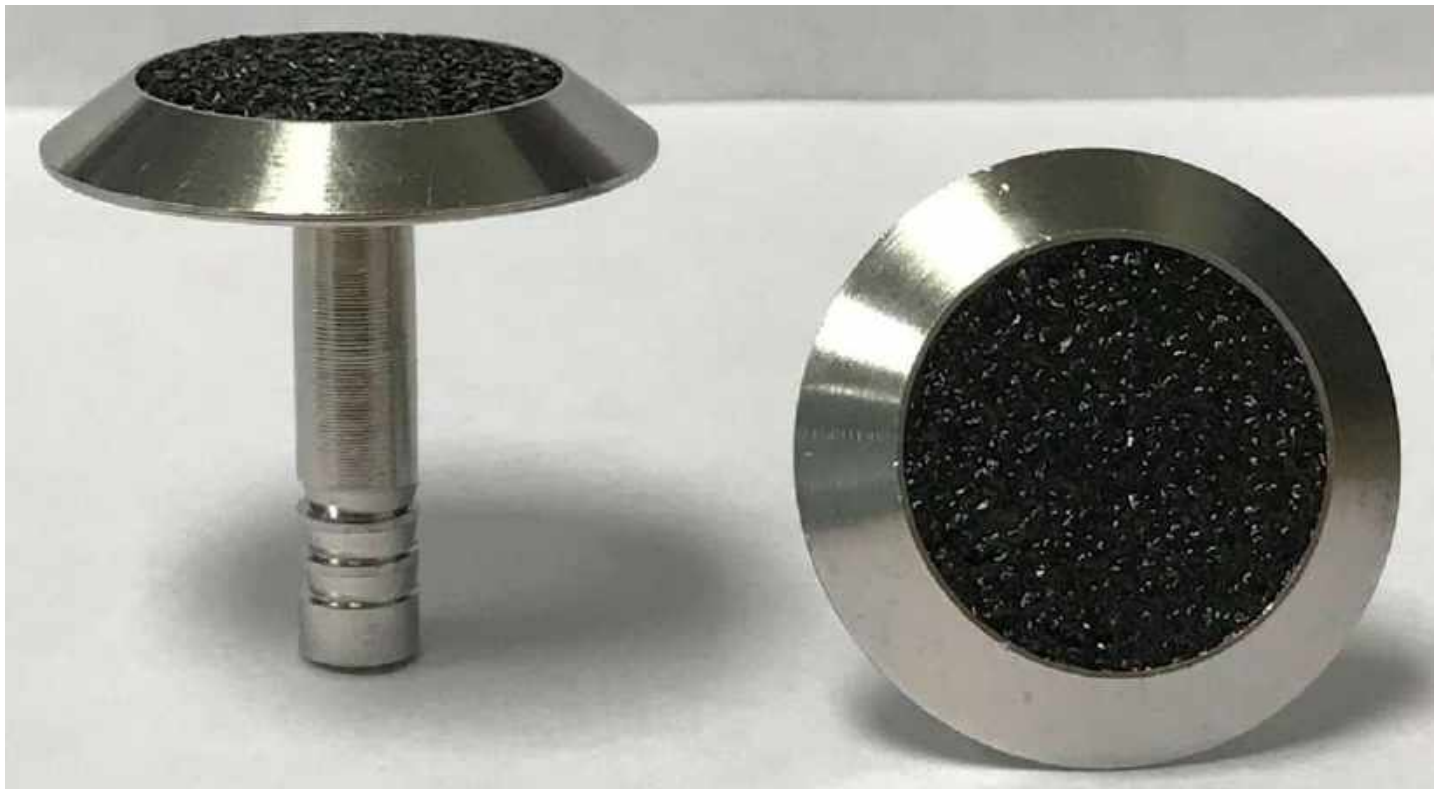


**KENT TACTILE WARNING STUD RESIN INFILL (KTWS/25/5/RI)**

Kent Tactile Warning Stud with Resin Infill KTWS/35/5/RI provides an underfoot warning to identify hazards and dangerous areas where there is a change in levels or where there is an unprotected opening such as open stairwells and platforms. The stainless steel material is ideal for high-traffic pedestrian areas. The slip resistant design ensures the studs do not themselves become a hazard in wet or cold conditions

Features:

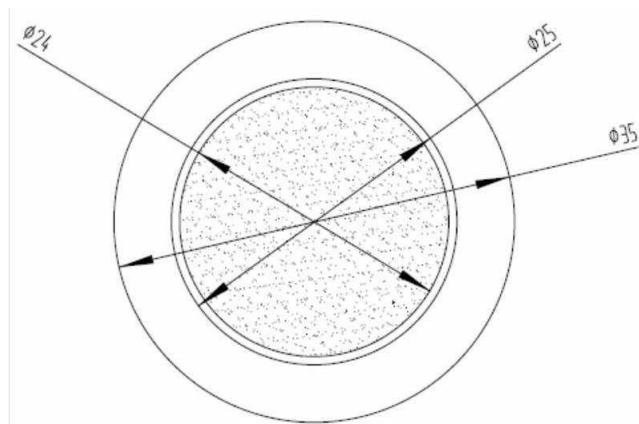
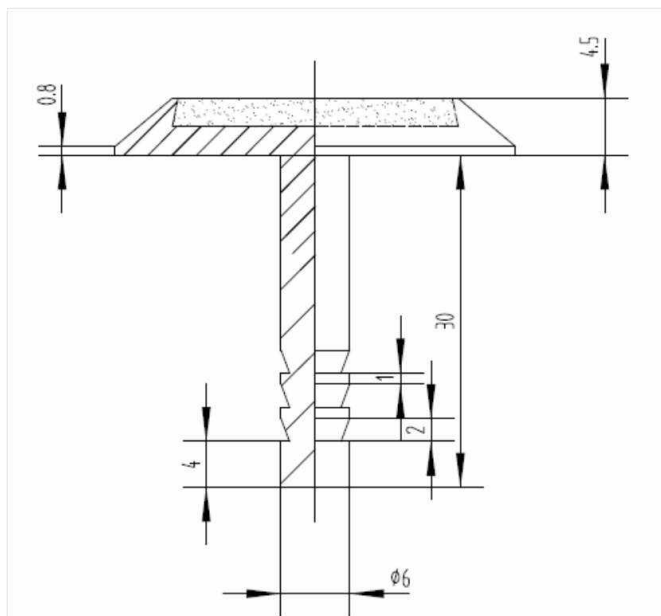
- Underfoot warning to identify hazards and dangerous areas
- Grade 316 Stainless steel
- Easy Installation
- Can be incorporated onto the full range of Kent Stainless seats and benches
- Slip resistant design

**Specify:**

Kent Tactile Warning Stud (Resin Infill) KTWS/25/5/RI; Grade 316L Stainless Steel; polished finish; Black Resin Infill.

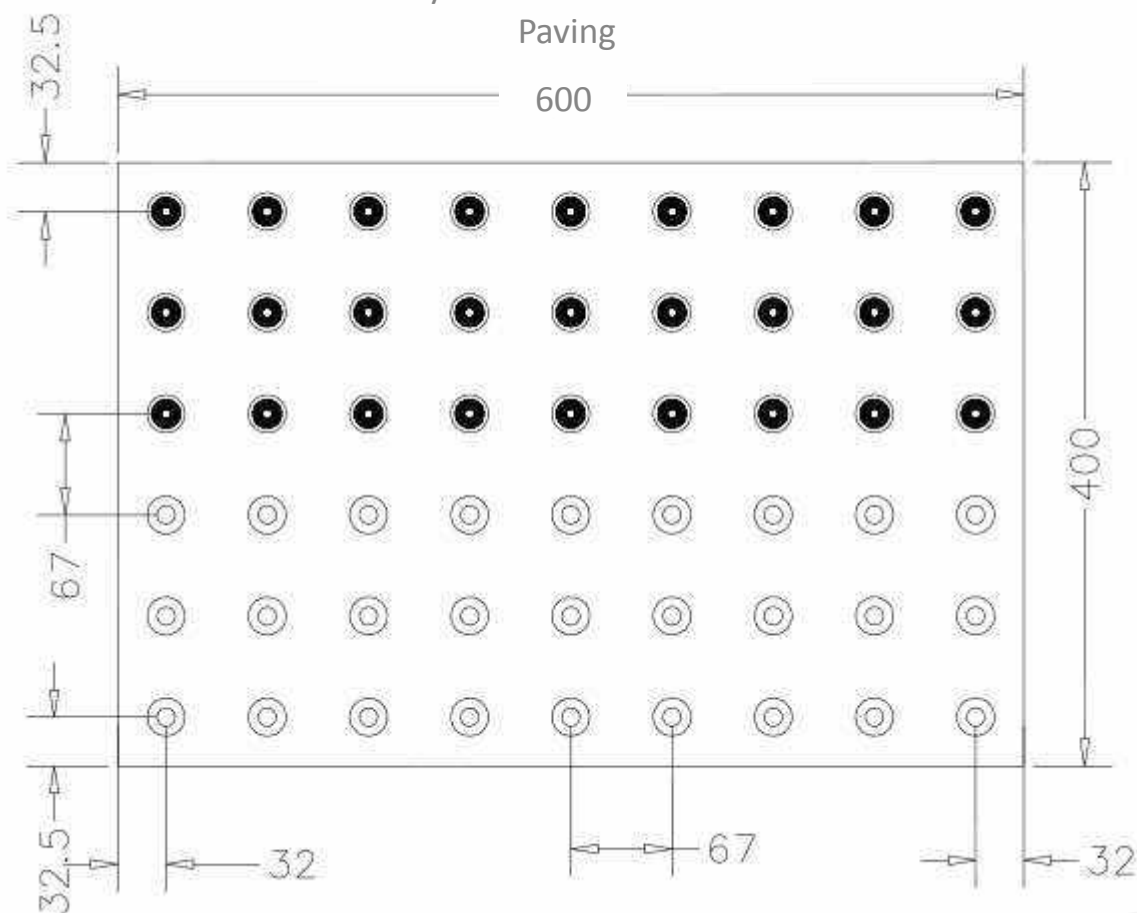


KENT TACTILE WARNING STUD RESIN INFILL (KTWS/25/5/RI)



Product Code	Height	Diameter	Thickness
Kent Tactile Warning Stud with Resin Infill KTWS/25/5/RI	35mm	35mm	4.5mm

Layout of the Concrete Paving



**KENT TACTILE WARNING STRIP (KTWS-25/400)**

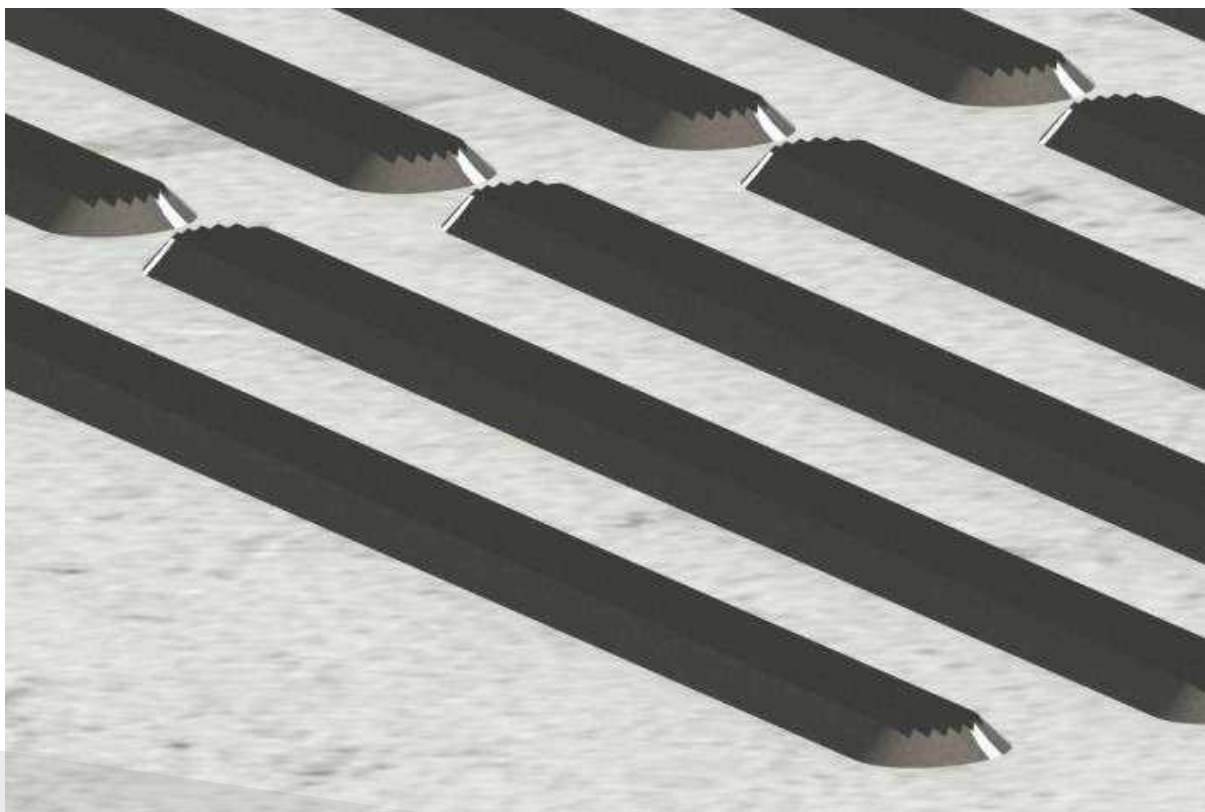
Kent Tactile Warning Strips Grade 316L Stainless Steel; Satin Finish 320 Grit Polished. The Kent Tactile Warning Strips provide an underfoot warning to identify hazards and dangerous areas where there is a change in levels or where there is an unprotected opening such as open stairwells and platforms. The stainless steel material is ideal for high-traffic pedestrian areas. The slip resistant design ensures the studs do not themselves become a hazard in wet or cold conditions. The stainless steel material is ideal for high-traffic pedestrian areas.

Features:

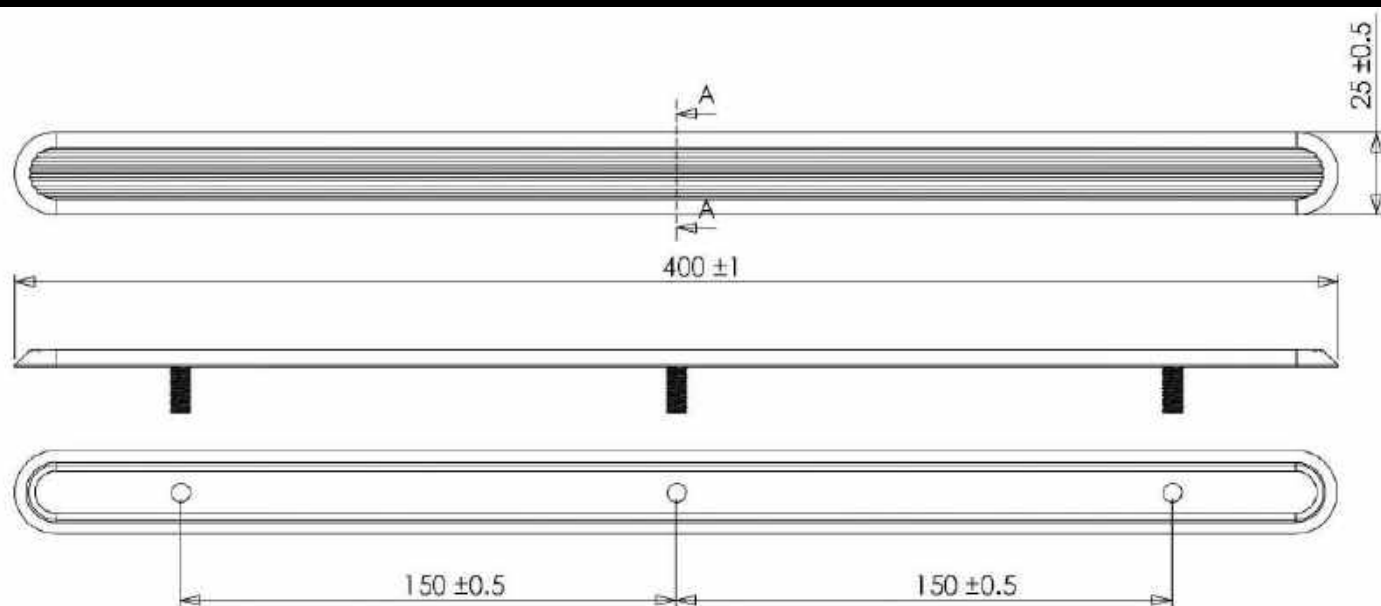
- Underfoot warning to identify hazards and dangerous areas
- Grade 316L Stainless Steel
- Easy installation
- Slip resistant ridge finish design

**Specify:**

Kent Tactile Warning Strip KTWS-25/400; Grade 316L Stainless Steel; 400mm length, 25mm width; Satin finish 320 grit polish.



KENT TACTILE WARNING STUD (KTWS/25/5/FDG)



Product Code	Length	Width	Height above Ground Level
Kent Tactile Warning Strip (KTWS-25/400)	400mm	25mm	5mm

Regulations & Guidelines

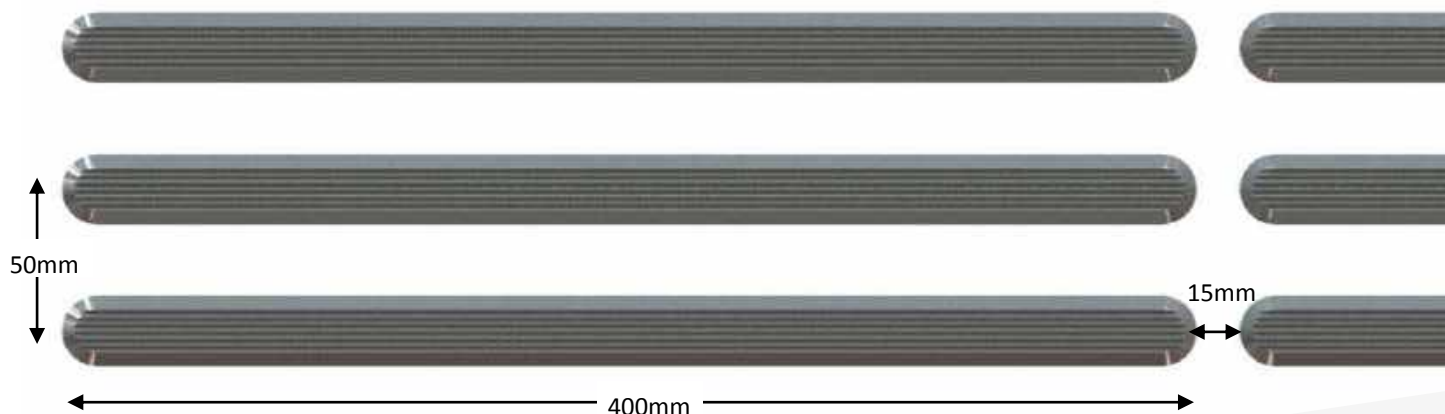
In DDA regulations it specifies that Strips are to be placed at 50mm centres running transversely across the direction of pedestrian travel.

The bars are 6mm - 5mm high, 20mm - 25mm wide and spaced 50mm from the centre of one bar to the centre of the next bar. (As Shown in the Diagram below)

Our standard Kent Tactile Warning Stud is 400 mm x 25mm. This means we must leave a 15 mm gap from end to end of each Strip.

For more information on the regulations on this Follow the link below:

https://assets.publishing.service.gov.uk/government/uploads/system/uploads/attachment_data/file/289245/tactile-paving-surfaces.pdf







Demarcations Studs

Demarcation Studs..... 16

Criss Cross Demarcation Studs..... 18

Road Demarcation Studs..... 20

Pyramid Demarcation Stud..... 22



KENT DEMARCATION STUDS (KDS25)

The Kent Demarcation Studs are used to delineate walkways and site boundaries. The discs finish flush to the finished paving surface and as shown below they can be customised using logos, or signage etc. by laser etching.

The stainless steel material is ideal for high traffic pedestrian areas

Features:

- Electropolished Finish
- Optional Laser etching
- Grade 316 stainless steel
- Used to delineate walkways and site boundaries

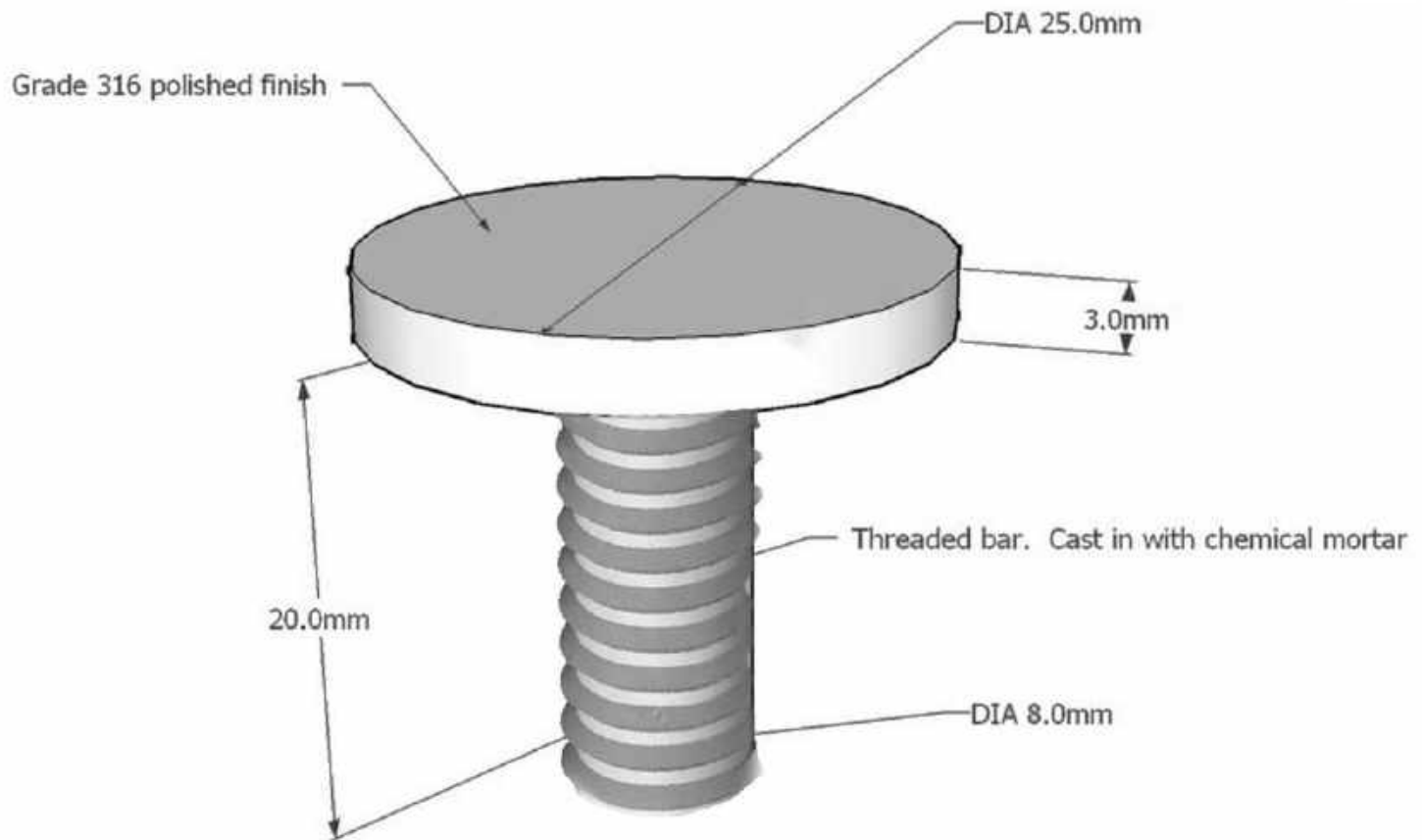


Specify:

Kent Demarcation Stud KDS25; Grade 316 Stainless Steel; 25mm Diameter; Satin finish 320 grit polished.



KENT DEMARCATION STUD (KDS25)



Product Code	Disc Thickness	Diameter	Studs
Kent Demarcation Stud KDS25	3mm	25mm	1
Kent Demarcation Stud KDS35	3mm	35mm	1
Kent Demarcation Stud KDS50	3mm	50mm	2
Kent Demarcation Stud KDS70	3mm	70mm	3
Kent Demarcation Stud KDS100	3mm	100mm	3



**KENT CRISS CROSS DEMARCATION STUDS (KCCDS35)**

The Kent Criss Cross Demarcation Stud KCCDS35 is an anti-slip variation of the Kent Demarcation Stud.

It is used to de-lineate walkways and site boundaries. The disc lies 5mm above the surface once installed. It is manufactured using Grade 316L Stainless Steel, this material is perfect for high-traffic pedestrian areas. It has an overall diameter of 35mm

Features:

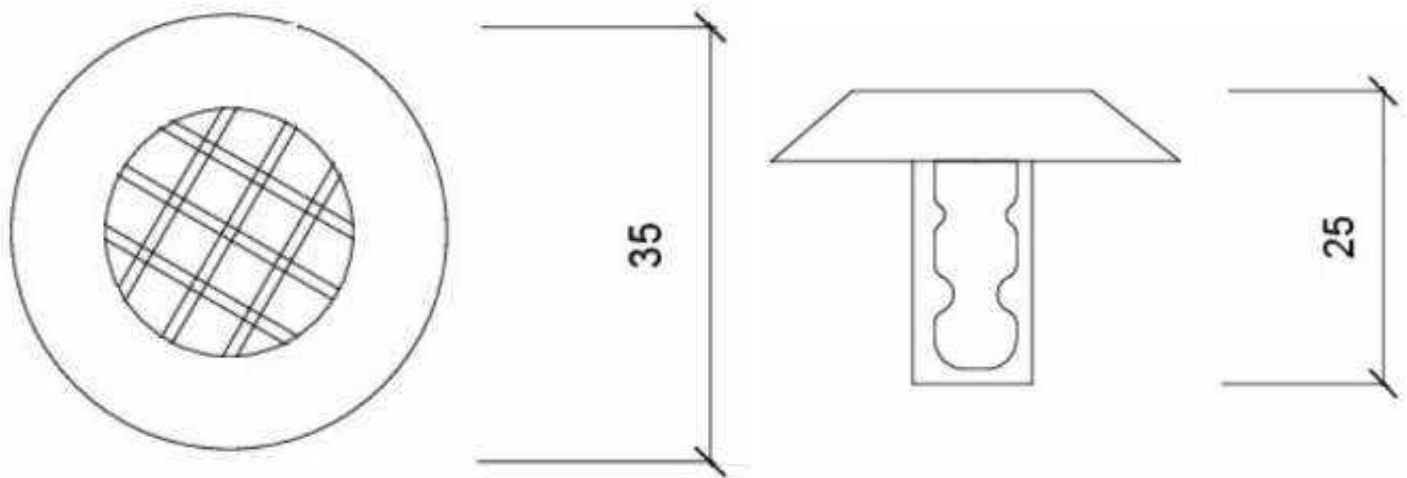
- Anti Slip Criss-Cross Pattern
- Grade 316 Stainless Steel
- Electro Polished Finish
- 35mm diameter

**Specify:**

Kent Criss Cross Demarcation Stud KCCDS35; Grade 316L Stainless Steel; Mill Finish.



KENT DEMARCATION STUD (KDS25)



Product Code	Disc Thickness	Diameter	Studs
Kent Criss Cross Demarcation Stud KCCDS35	5mm	35mm	1
Kent Criss Cross Demarcation Stud KCCDS50	5mm	50mm	2





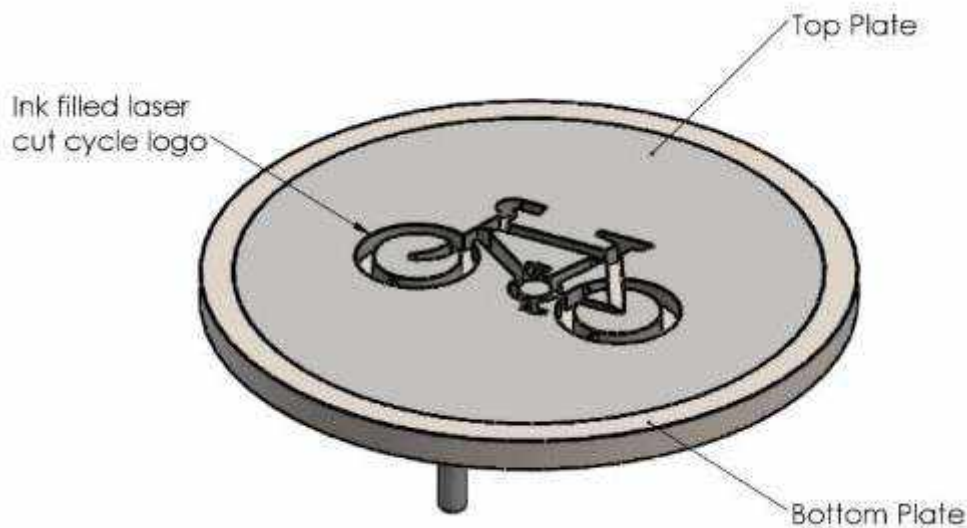
KENT ROAD DEMARCATION STUDS (KRDS100)

The Kent Road Demarcation Stud KRDS100 is used mainly in car park areas to mark out spaces, it is a very modern and innovative design. The stud is manufactured from Grade 316L Stainless Steel with a Bright Satin finish. It has an overall diameter of 100mm, this makes it easily visible for pedestrians and oncoming drivers.

Once installed the stud lies 10mm above the surface at a 150 degree angle. The stud comes with a plain top as standard but an option available is to have a logo or symbol laser cut into the top and to be placed on a vinyl colour of choice as seen in the photos.

Features:

- Grade 316L Stainless Steel
- 100mm overall diameter
- Bright Satin Finish
- Optional Laser cut logo
- Vinyl back colour

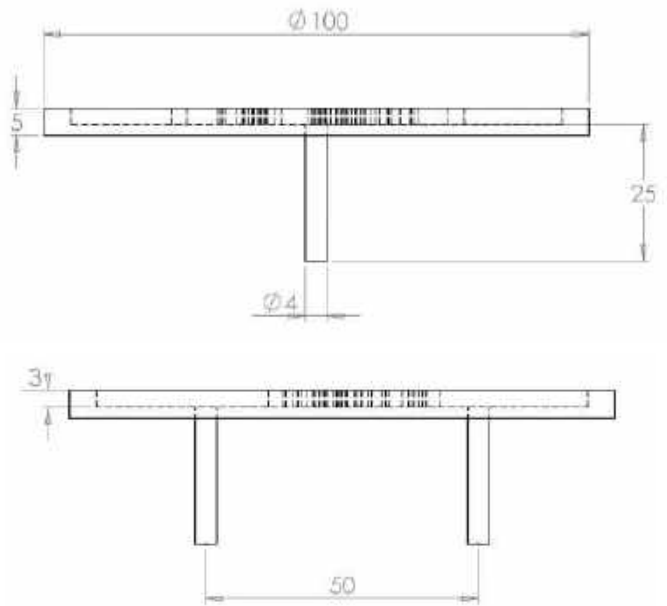
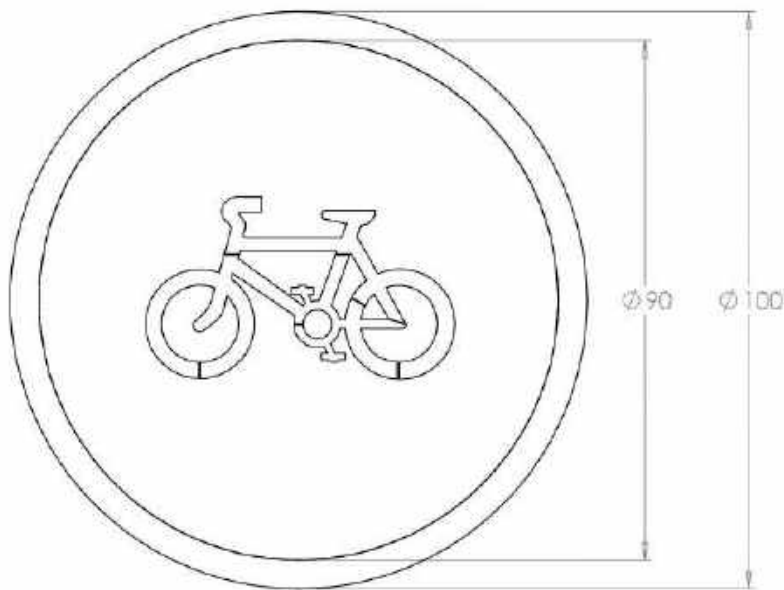


Specify:

Kent Road Demarcation Stud KRDS100; Grade 316L Stainless Steel; Cold Rolled Electro- polished; Laser cut bike symbol.



KENT ROAD DEMARCATION STUDS (KRDS100)



Product Code	Disc Thickness	Diameter	Studs
Kent Road Demarcation Stud (KRDS50)	5mm	50mm	2
Kent Road Demarcation Stud (KRDS100)	5mm	100mm	2



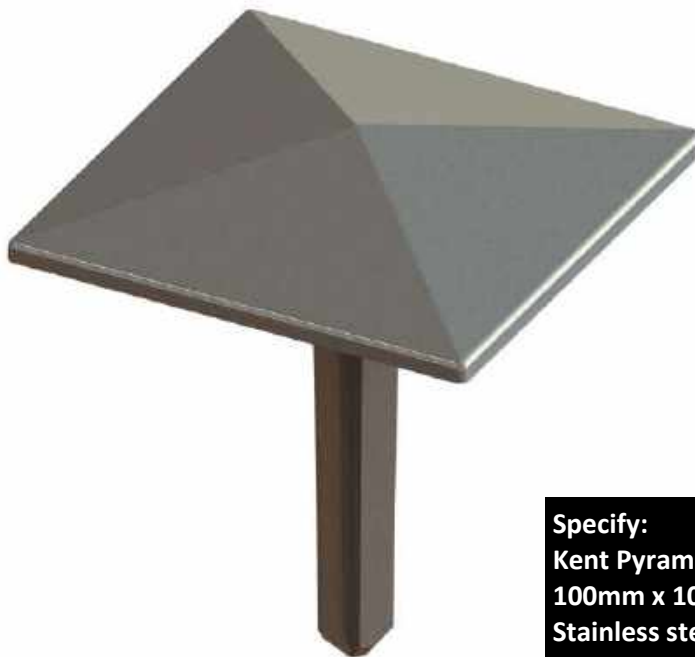
**KENT ROAD DEMARCATION STUDS (KRDS100)**

The Kent Pyramid Road Demarcation Studs are 100 x 100mm with 18mm height from ground finish to top point of stud.

These Studs are designed to be large enough for drivers of cars to notice them visibly and also be noticeable if driven over. They are made from 3mm thick grade 316 stainless steel and have a Electro polished finish.

Features:

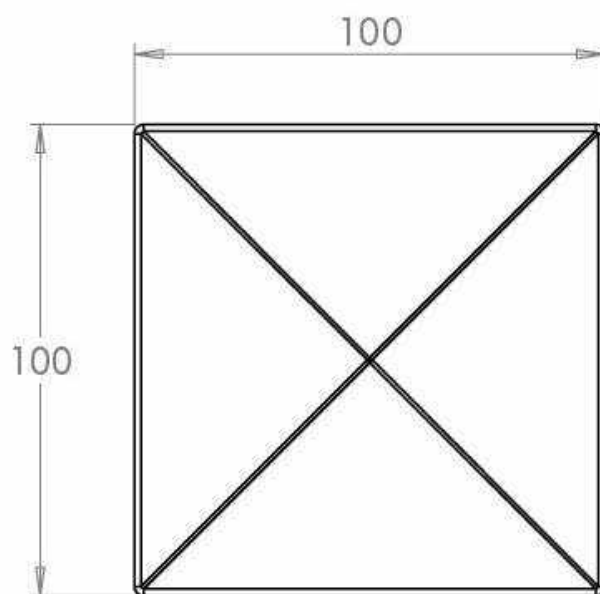
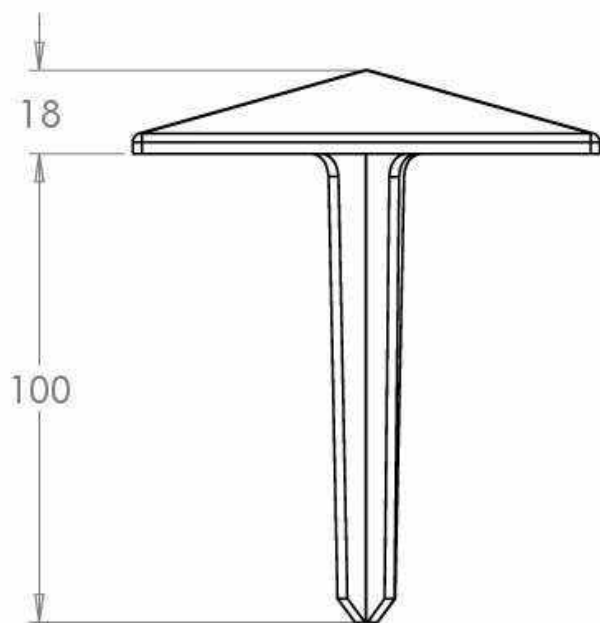
- Pyramid Stud 100x100x18mm
- Grade 316 Stainless Steel
- Electro Polished Finish
- 100mm long root fixing

**Specify:**

Kent Pyramid Road Demarcation Stud (KPRDS - 100);
100mm x 100mm Square, 18mm visible height; Grade 316
Stainless steel; Satin Finish



KENT ROAD DEMARCATION STUDS (KRDS100)



Product Code

Visible Height

Width

Length

Kent Pyramid Road Demarcation Stud (KPRDS100)

18mm

100mm

100mm







Anti Skate Studs

Anti Skate Swoosh Studs 26

Anti Skate Sphere Studs 28

Anti Skate Angle Studs 30

Anti Skate Fin Stud 32

**KENT SWOOSH ANTI SKATE STUD (KSWASS/855/30/R15)**

Kent Swoosh Studs are used to deter unwanted skateboarding in order to prevent damage to street furniture and stonework elements. The studs eliminate the long continuous edge of many street furniture and stone products.

The stainless steel material is ideal for high-traffic pedestrian areas and it does not adversely affect the aesthetics of the elements they are protecting.

Features:

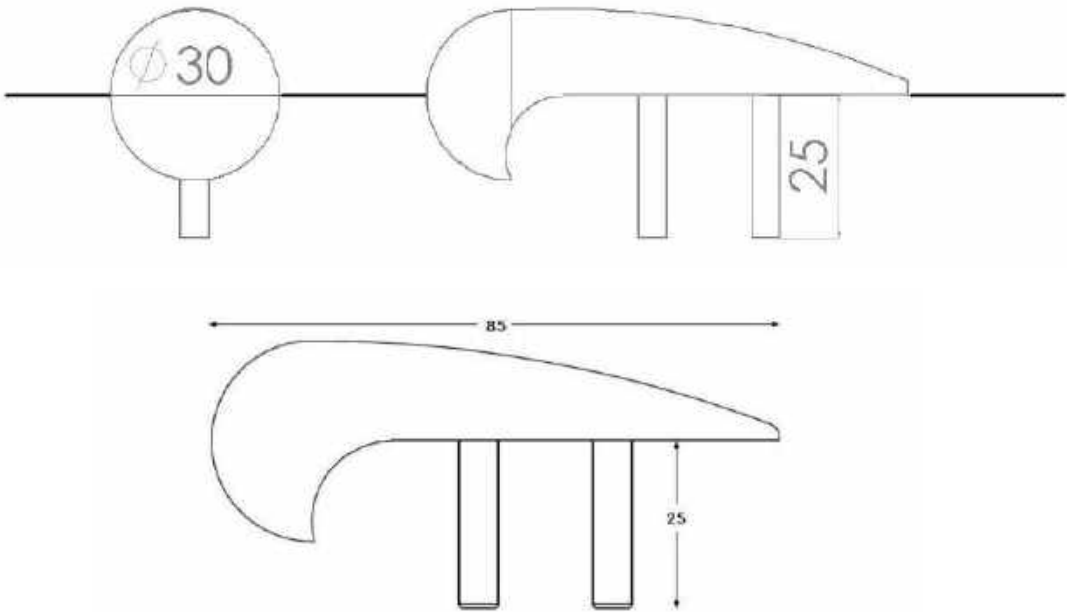
- Bright Peened
- Grade 316 Stainless Steel
- Easy Installation
- Used to deter Skateboarding on long edge street furniture
- Can be incorporated into full range of Kent Stainless seats and benches



Specify Kent Swoosh Anti Skate Studs KSWASS/855/30/R15; Grade 316L Stainless Steel; Bright Peened. 15mm radius



KENT SWOOSH ANTI SKATE STUD (KSWASS/855/30/R15)



Product Code	Diameter	Length	Internal Radius
Kent Swoosh Anti Skate Studs KSWASS/855/30/R15	18mm	85mm	15mm



Shot Peened Swoosh Stud



Satin Finish 320 Grit Polished Swoosh Stud



Kent Swoosh Stud installed in Greenwich Market

**KENT SPHERE ANTI SKATE STUDS (KSASS/35/R15)**

Kent Sphere anti skateboard studs are used to deter unwanted skateboarding in order to prevent damage to street furniture and stonework elements. The studs eliminate the long continuous edge of many street furniture and stone products.

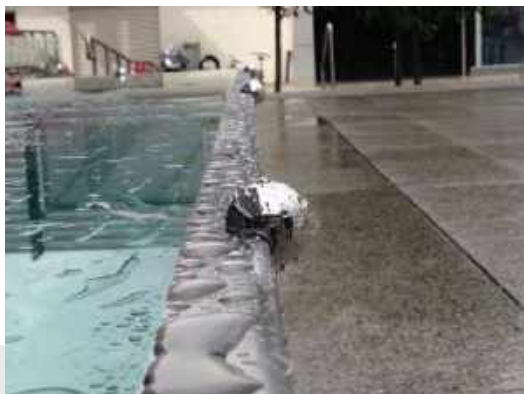
The stainless steel material is ideal for high-traffic pedestrian areas and does not adversely affect the aesthetics of the elements they are protecting.

Features:

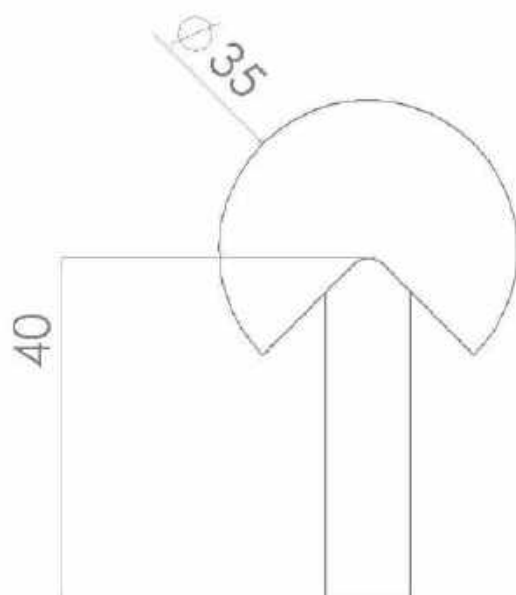
- Electropolished Finish
- Grade 316 Stainless Steel
- Easy Installation

Specify:

Kent Sphere Anti Skate Studs KSASS/35/R15; Grade 316L Stainless Steel; Cold Rolled Electropolished.



KENT SPHERE ANTI SKATE STUDS (KSASS/35/R15)



Product Code	Diameter	Height	Internal Radius
Kent Swoosh Anti Skate Studs KSWASS/855/30/R15	35mm	40mm	15mm



Kent Sphere Stud with machined internal radius for flush installation



Kent Semi Sphere Stud, a variation of the standard sphere stud commonly used for decoration on planters

**KENT ANGLE ANTI SKATE STUDS (KASA50)**

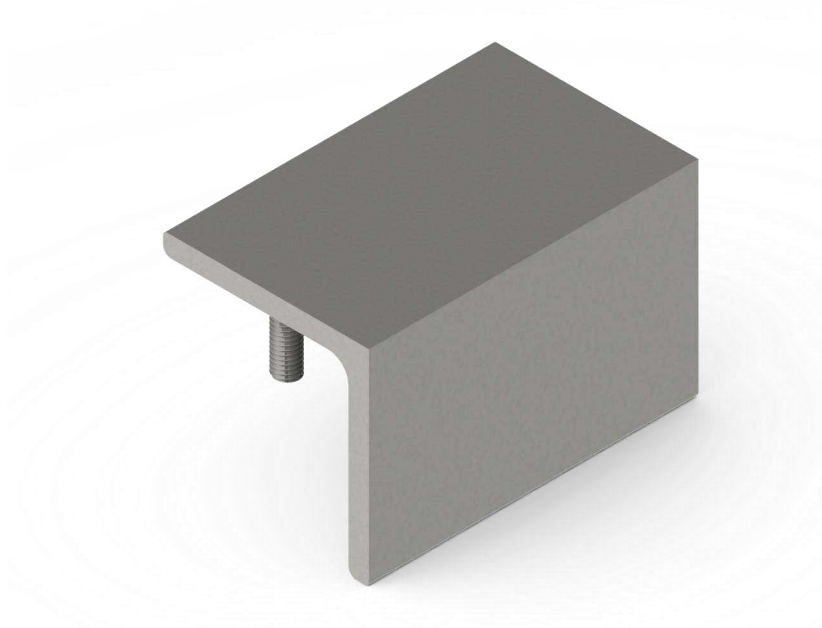
The Kent Stainless Anti Skate angle Stud is constructed from 316L grade stainless steel. The external finish of the stud is satin finished to 320 grit polish. This is the perfect deterrent to skateboarding in upmarket Public realm projects.

Features:

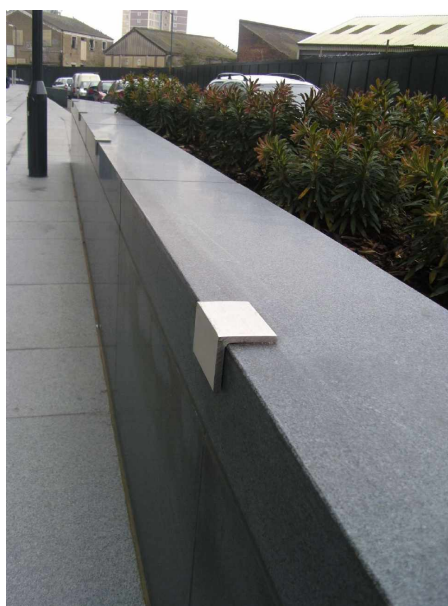
- Satin finish 320 grit polished
- Grade 316L stainless steel
- Easy installation - 2no. fixing points per stud
- High quality, low cost anti skate-board stud

Specify:

Kent Anti Skate Angle Stud KASA50; Grade 316L Stainless Steel; Satin finish to 320 grit polished.

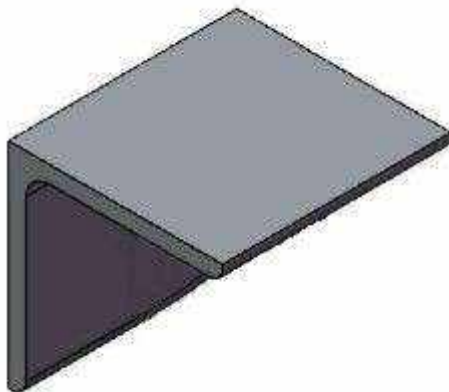
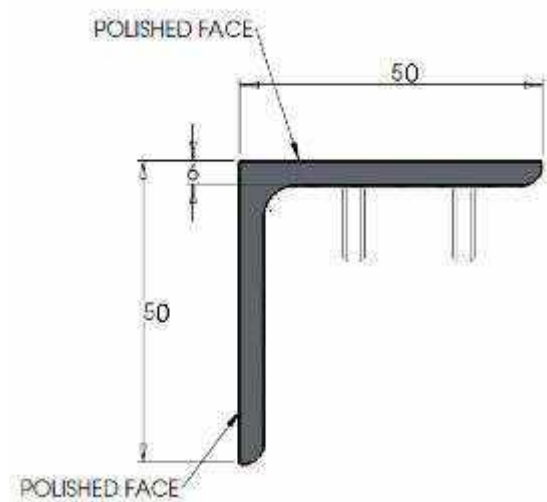


*Angle Anti Skate Studs installed in
Canada Water, London*



*Angle Anti Skate Studs installed in
Greenwich Creekside, London*

KENT ANTI SKATE ANGLE STUDS (KASA50)



Product Code	Visible Height	Width	Length
Kent Angle Anti Skate Stud (KASA50)	50mm	50mm	75mm



**KENT ANTI SKATE FIN STUD (KFS100/50/35)**

Kent Fin Studs are used to deter unwanted skateboarding in order to prevent damage to street furniture and stonework elements. The Fins eliminate the long, smooth edges, so skateboarders can no longer 'grind' their boards along the edges.

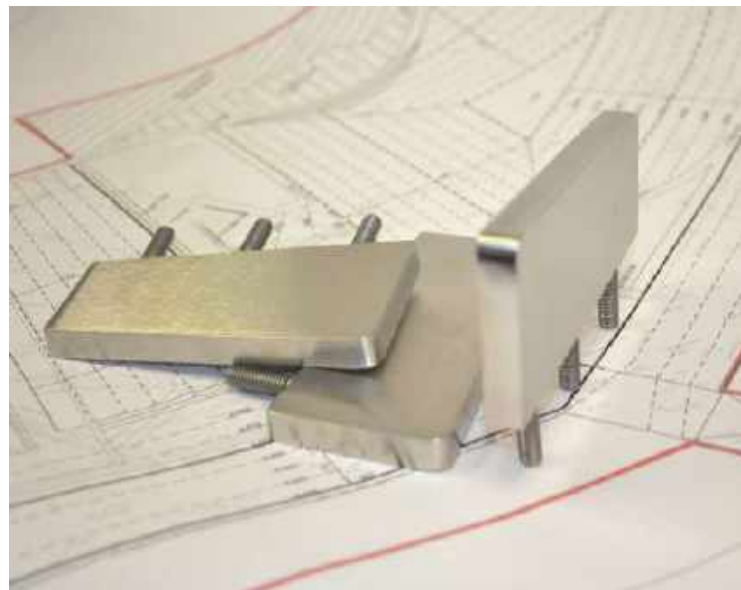
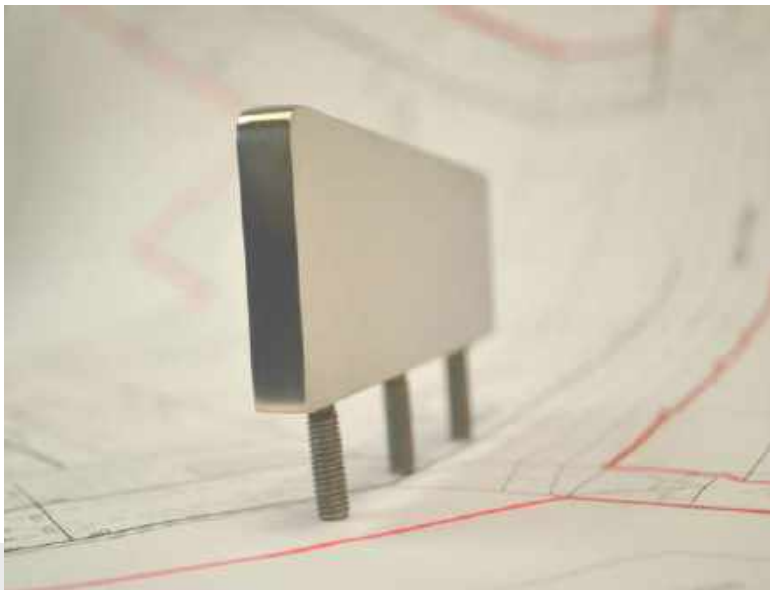
The Stainless Steel material is ideal for high traffic pedestrian areas and it does not adversely effect the aesthetics of the elements they are protecting.

Features:

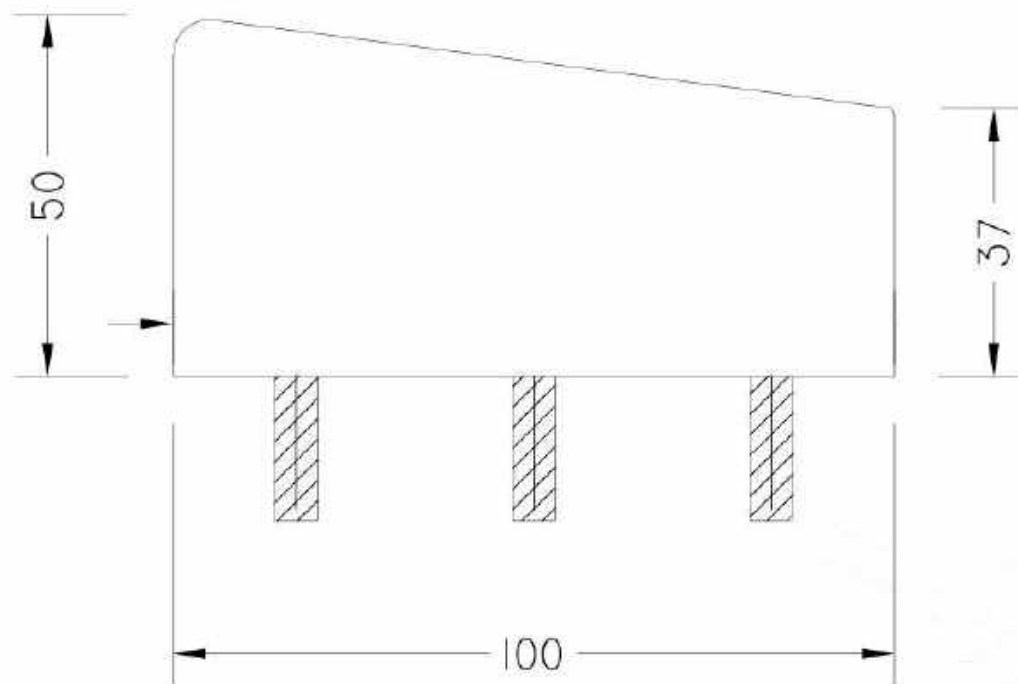
- Grade 316 Stainless Steel
- 10mm Thick Steel
- Polished Edges
- Satin Finish 320 Grit Polish
- 3 Installation Pins

Specify:

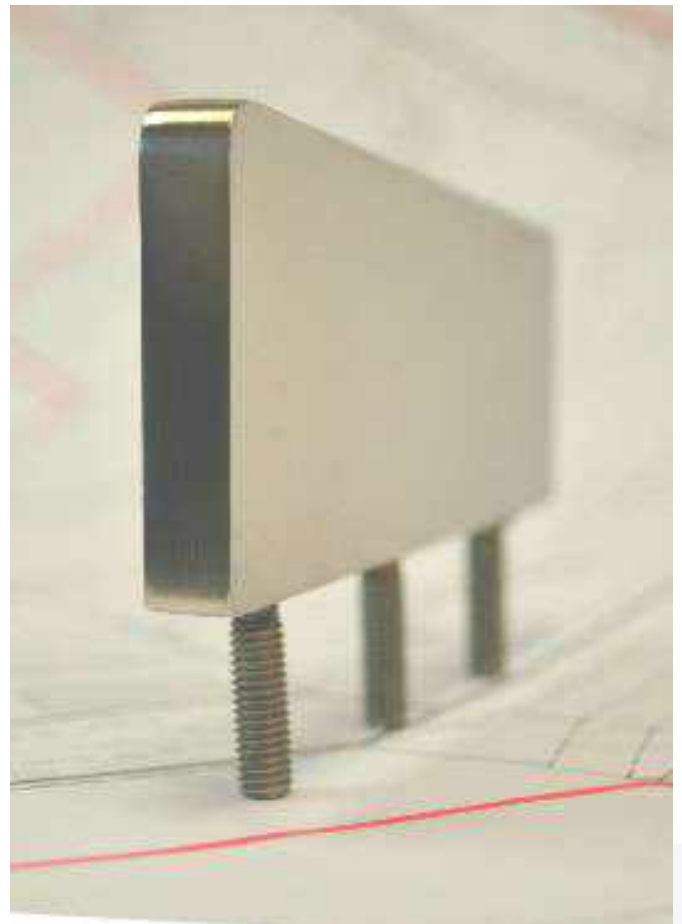
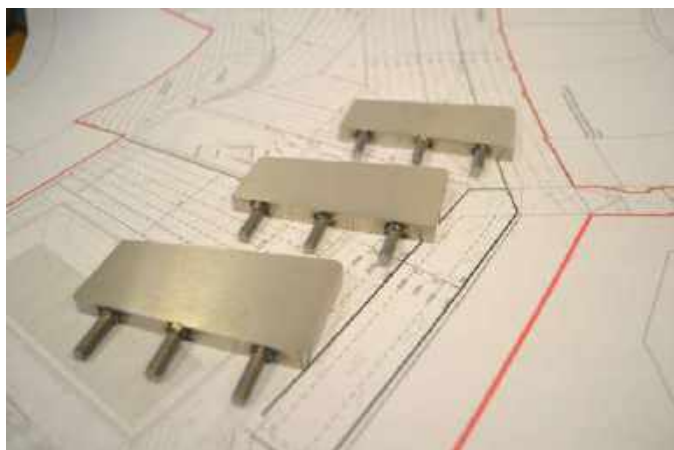
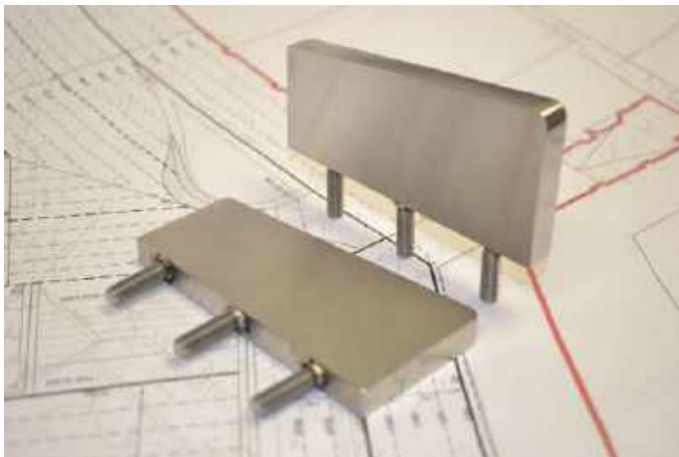
Kent Anti Skate Fin Studs (KFS-100/50/35); 100mm Width, 10mm thick, 50mm height ; 3 pins; Grade 316L Stainless Steel; Satin Finish 320 Grit Polished.



KENT ROAD DEMARCATION STUDS (KRDS100)



Product Code	Visible Height	Length	Pins
Kent Anti Skate Fin Stud (KFS/100/50/37)	50/37mm	100mm	3



Testimonials



“We have no hesitation in recommending Kent Stainless and look forward to working with them on public building projects in the future”

- ARUP



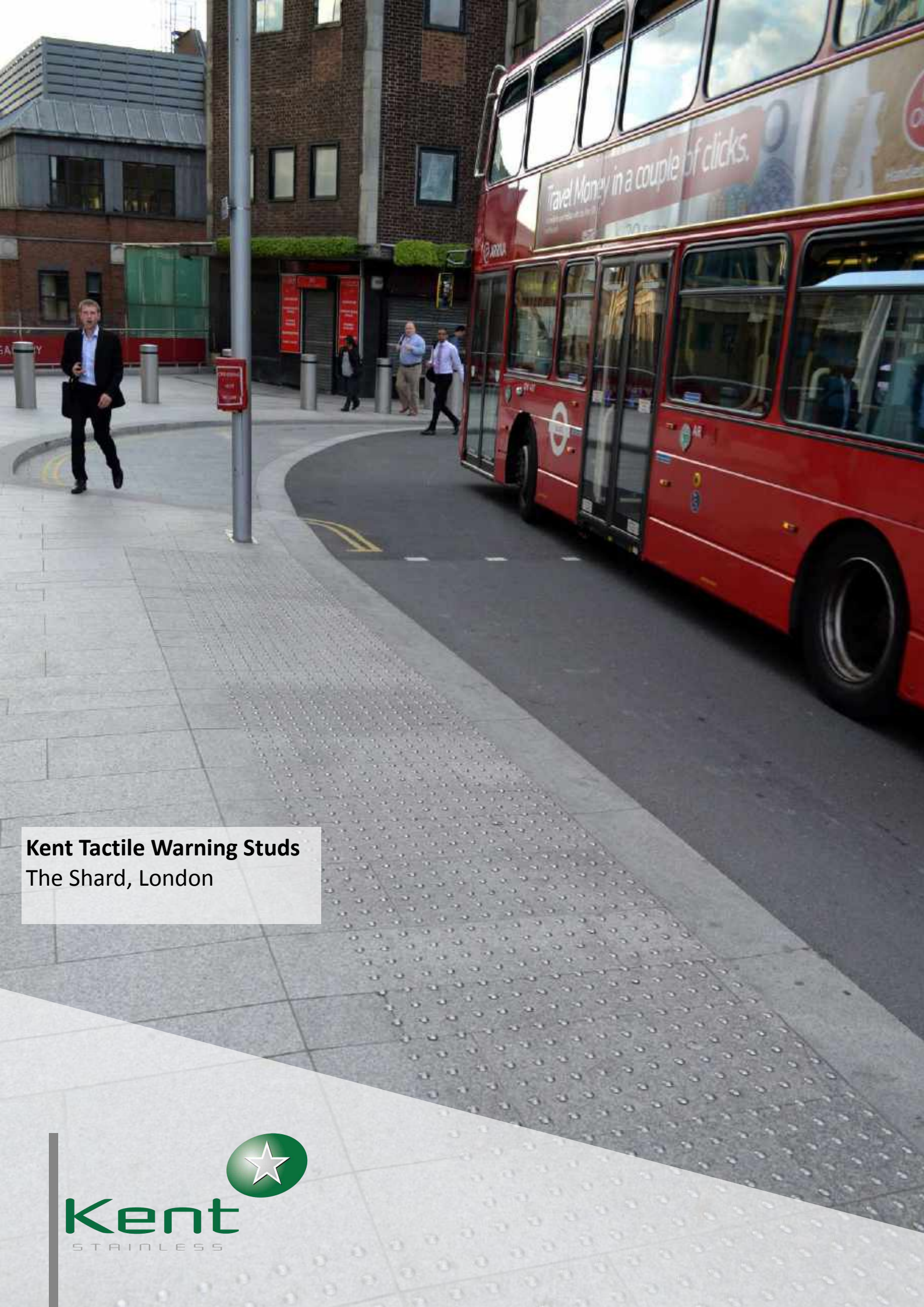
“Kent Stainless scored highly in all regards again”

- BAM



“Your timely delivery and seamless integration with main contractor Skanska made the overall project a huge success”

- Forward Swindon



Kent Tactile Warning Studs
The Shard, London



Kent
STAINLESS



Kent Stainless (Wexford) Ltd.

Ardcavan, Wexford, Ireland

TEL NO:	+353 53 9143216
UK FREEPHONE:	0800 376 8377
FAX:	+353 53 9141802
WEB:	www.kentstainless.com
EMAIL:	info@kentstainless.com