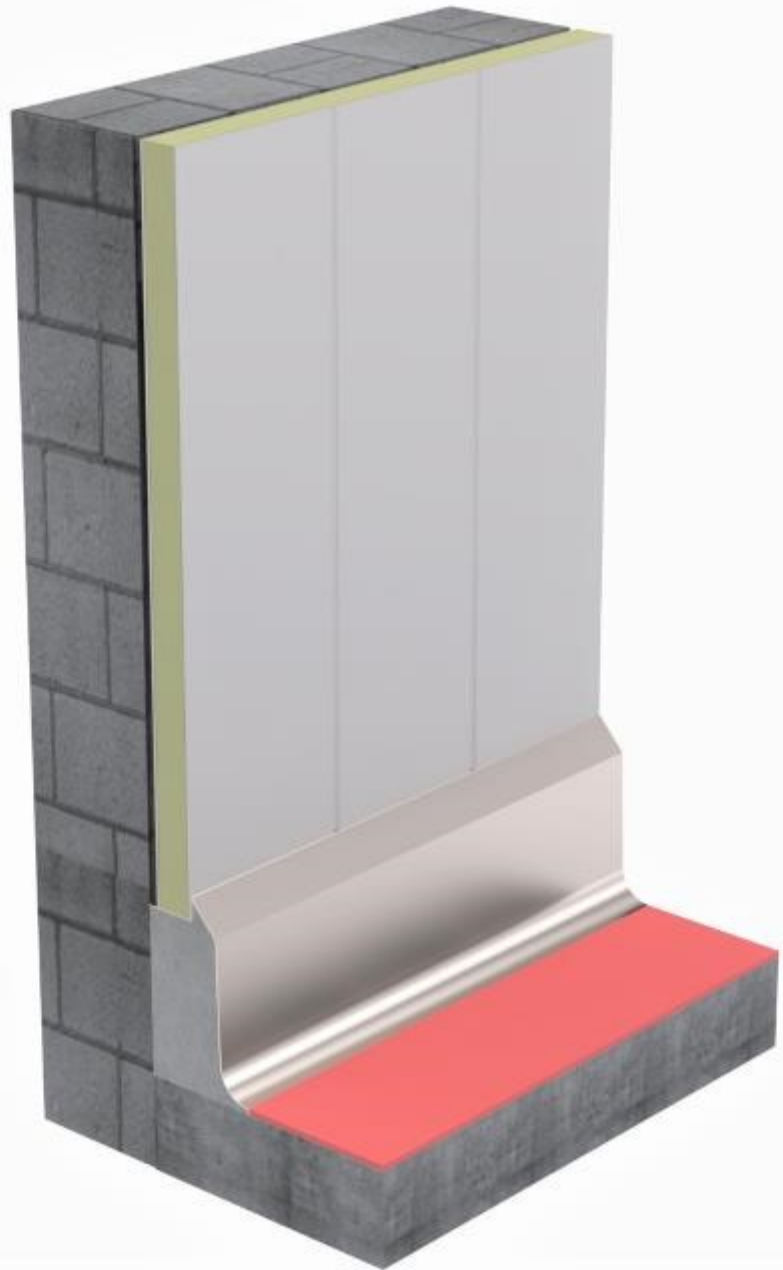


Kent Single Sided Flat Kerb



Kent
STAINLESS

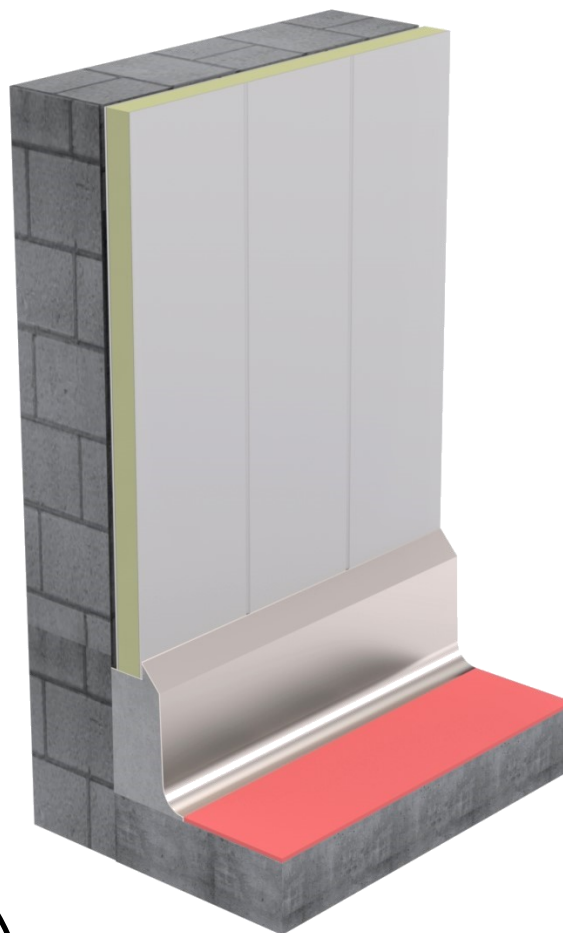
KENT SINGLE SIDED FLAT KERB—KSSFK-290/100

The Kent Single Sided Flat Kerb is designed for areas to provide surface protection to the lower part of walls to resist impact damage from trolleys, mobile bin units and pallet trucks. The overall design of the kerbing ensures they are easily cleaned with smooth joints to both walls and floors providing virtually ledge and crevice free surfaces. The single sided flat kerb can easily butt against existing walls for easy installation, typically used on the inside of factory perimeter walls.

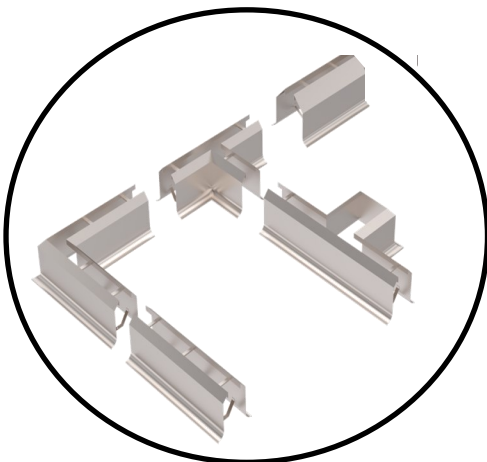
It comes with a modular system for all designs you may require. Bespoke options are always available on request.

Features:

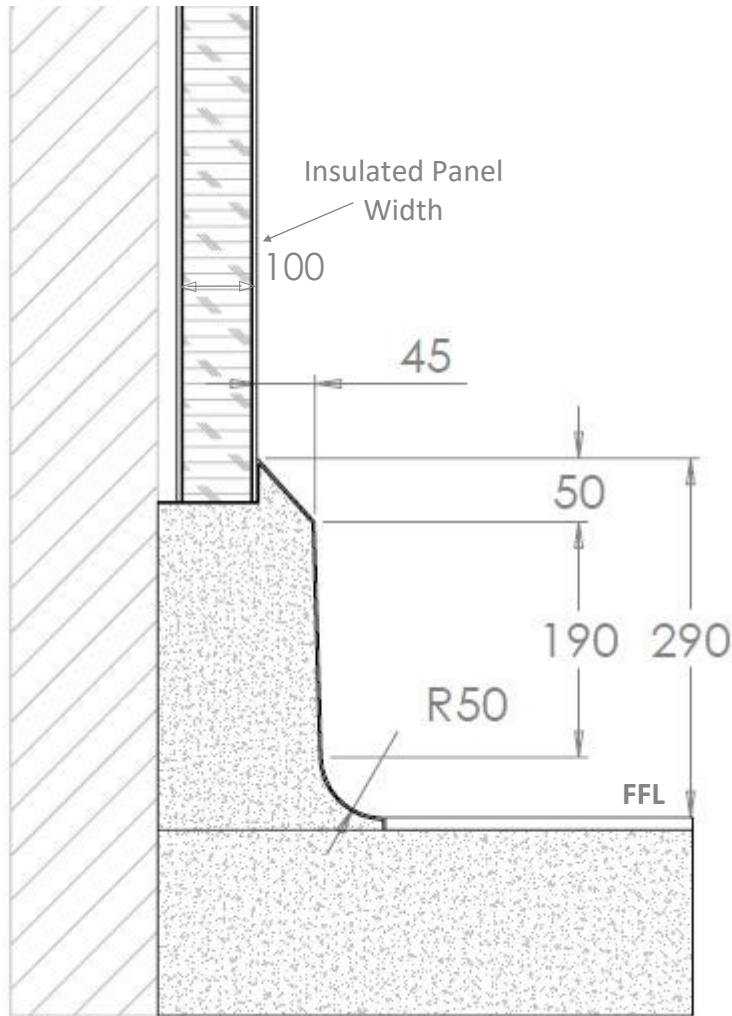
- 2mm or 3mm thick steel
- 320 grit satin finish
- Spaced fixing plates for bolting to ground
- Grade 304 stainless steel as standard, Grade 316 on Request.
- No dirt traps
- Easy to install system



Modular sections available



KENT SINGLE SIDED FLAT KERB—KSSFK-290/100



Product Code	Height	Insulated Panel Width
Kent Single Sided Flat Kerb KSSFK-290/100	290mm	100mm
Kent Single Sided Flat Kerb KSSFK-290/150	290mm	150mm

Specify

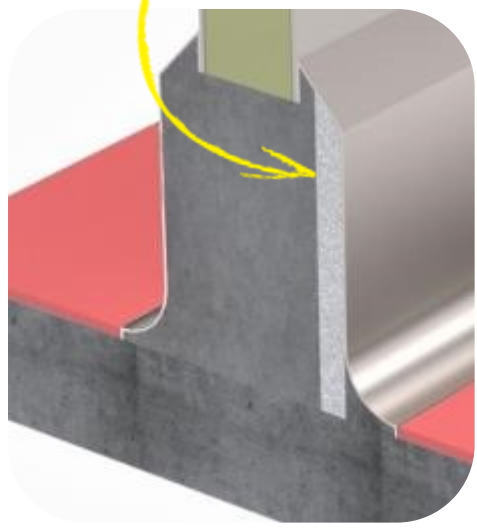
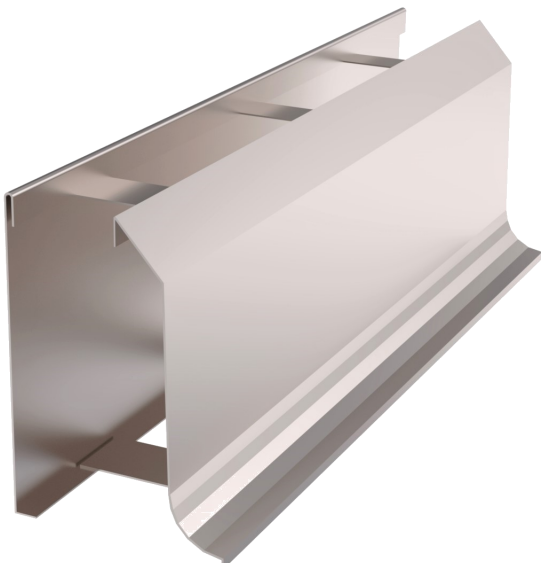
Choose your steel:
Grade 304 Stainless steel
Grade 316 Stainless steel

Customise your size, or go with our standard 290mm x 100mm (See size chart page 2 for dimensions)

Specify:
Kent Single Sided Flat Kerb (KSSFK-290/100); Grade 304 Stainless Steel; H: 290mm, W:100mm; 2mm Thick Steel; Satin Finish 320 Grit Polish;

Choose your thickness:
2mm
3mm

Include Insulated board within the Kerb Into the clause



Maintenance of Stainless Steel

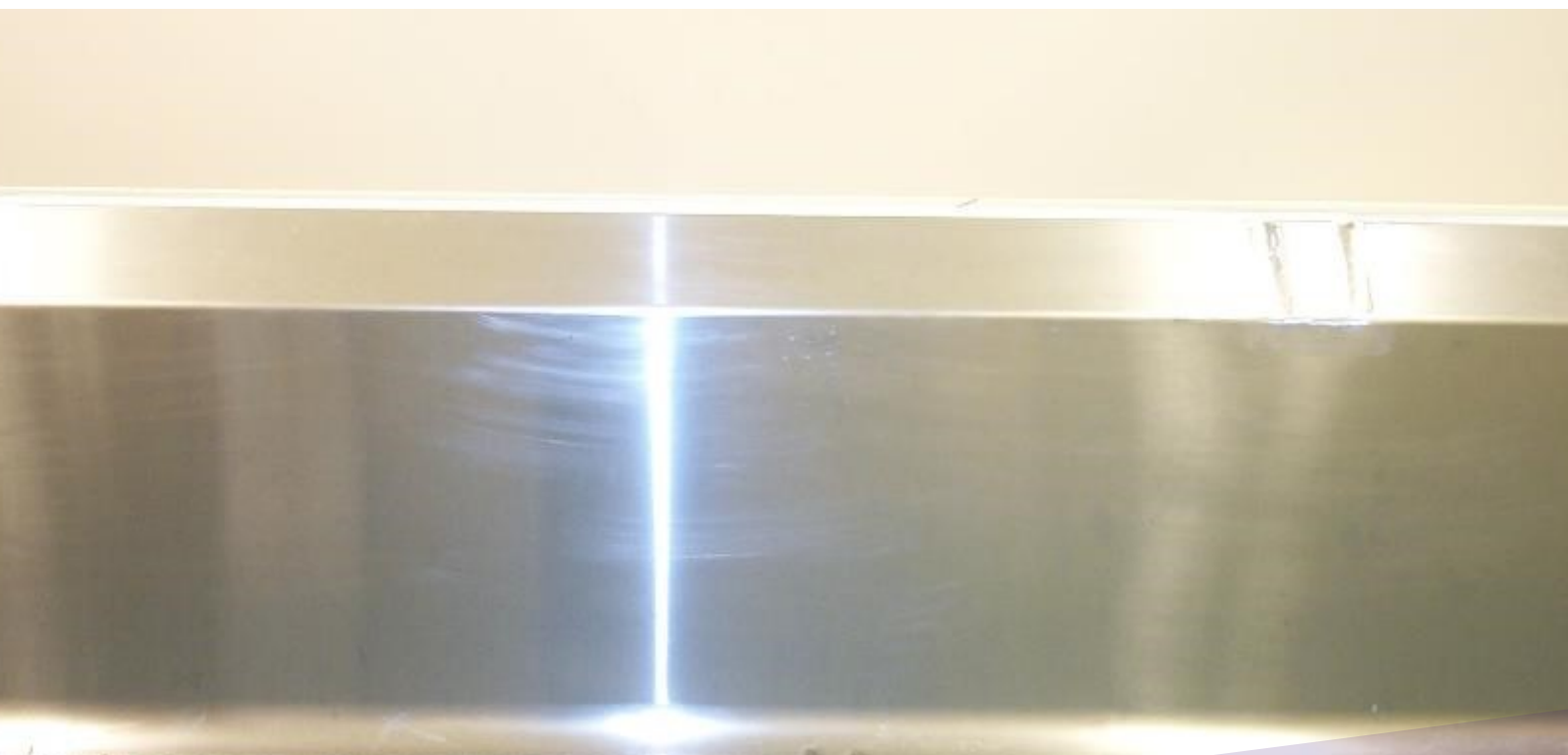
Clean the stainless steel components using warm water with a mild detergent with a non-abrasive cloth or sponge. Heavier stains may require the use of a nylon-scouring pad or a stainless steel cleaner.

To remove paint or graffiti use a cloth and Alkaline or solvent paint strippers according to type of paint. In the case of a bead blasted finish, where abrasive cleaning is required, always use a random circular rubbing action with a cloth.

In the case of brushed finishes the surface consists of uniform fine 'scratches' running in one direction so where abrasive cleaning is required always use a straight back and forward rubbing action in the direction of the grain using soap and warm water.

Rust spots or 'tea stains' can occur on the surface of the material, these are normally caused by contamination from ordinary mild steel, particularly in areas where construction work has been undertaken. Such stains can be removed using Rust Remover 410.

In cases where the surface is severely stained because of severe environmental conditions or scratched due to misuse, it may still be possible to restore the original finish using chemicals such as Oxalic Acid solution. There are many stainless steel polishes available to enhance the surface finish.





Kent Stainless Ltd

Ardcavan, Wexford, Ireland

TEL NO: +353 53 9143216
UK FREEPHONE: 0800 376 8377
FAX: +353 53 9141802
WEB: www.kentstainless.com
EMAIL: info@kentstainless.com

