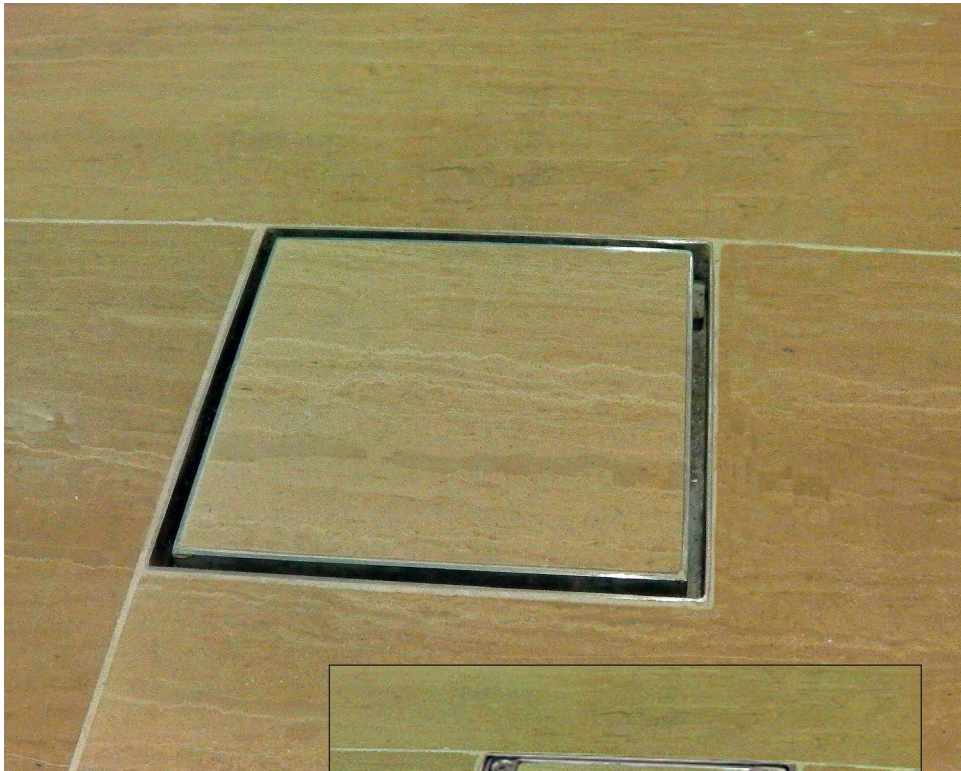


KENT KTC0150/102 – Tile Cleanout

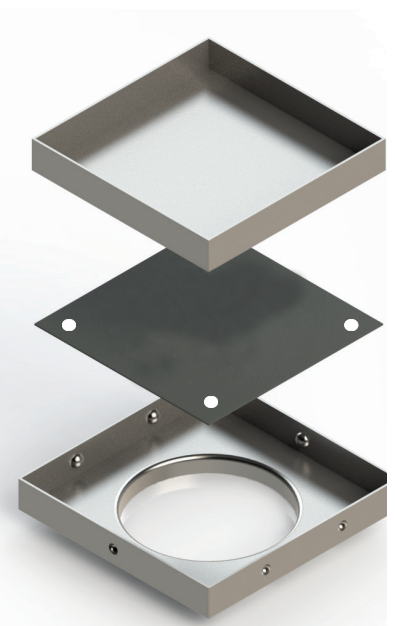
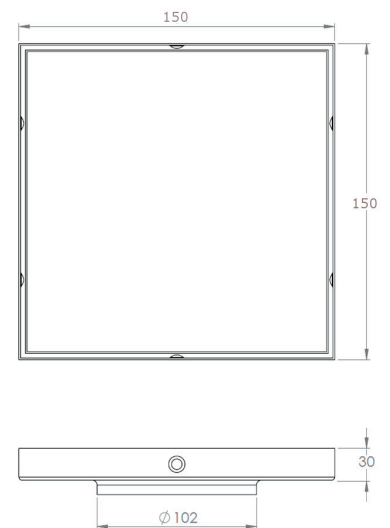
The Kent Stainless cleanout with tile infill has been developed specifically for the high end residential market. The cleanout can be infilled with a solid tile, or a glass block giving an extra special effect. The cleanouts are manufactured in **grade 316 stainless steel** with a satin finish.

Features

- Grade 316 Stainless steel
- 102mm diameter
- Mill finish as standard
- Minimum order quantity 200+ pieces



Lock down version
available



Product Code	Height	Width	Depth	Outlet
KTCO 150/102	30mm	150mm	150mm	102mm
KTCO 200/102	30mm	200mm	200mm	102mm
KTCO (LD) 150/102	30mm	150mm	150mm	102mm
KTCO (LD) 200/102	30mm	200mm	200mm	102mm

Specify Kent Tile Cleanout' KTC0150/102. 150 x 150mm, 2 part cleanout. Grade 316 stainless steel with a mill finish.



BS EN1253 Class K3