

# Kent Heelmesh Tree Grille



**Kent**  
STAINLESS



**KENT HEELMESH TREE GRILLE (KHTG-595/640)****Specify:**

Kent Heelmesh Tree Grille ; Wedge Grating; Inner Circle Radius:145mm, W:595mm, L:640mm, D:50mm; Grade 316 Stainless Steel; Satin Finish 320 Grit Polished. Loading FACTA B.

**Description:**

The Kent Heelmesh Tree Grille is manufactured from Grade 316 Stainless Steel and is finished with a Satin Finish 320 Grit Polish. The inner radius and size of the tree pit can be customised to suit the surrounding landscape.

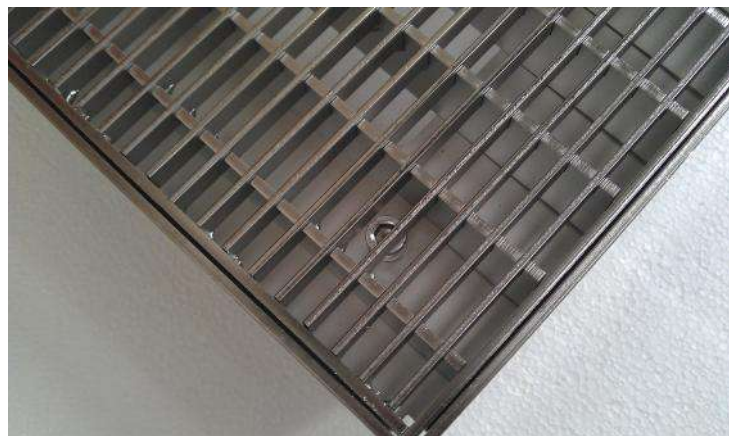
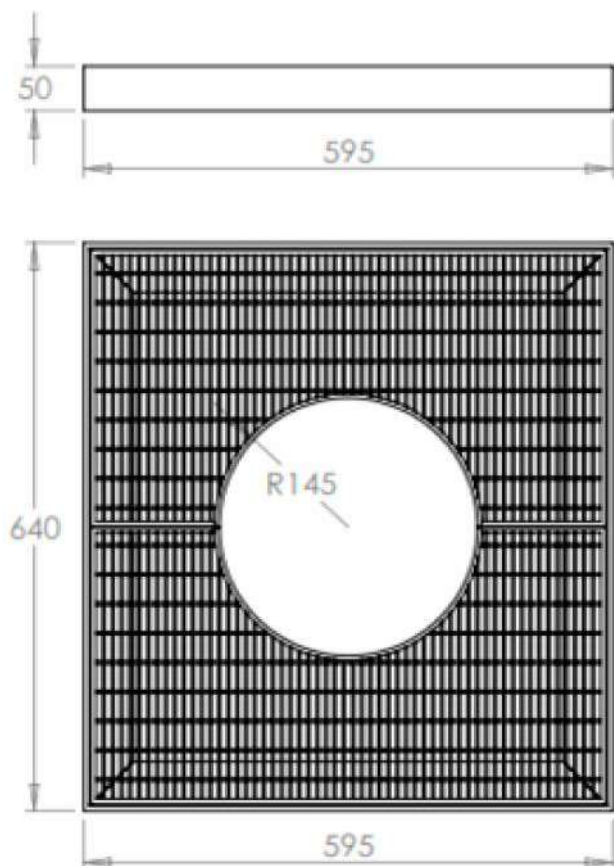
**Features:**

- Grade 316 Stainless Steel
- Optional Lockdown Feature
- 65% Free Area
- FACTA B Loading
- Satin Finish 320 Grit Polish





**KENT HEELMESH TREE GRILLE (KHTG-595/640)**



Product Code	Length	Width	Depth
Kent Heelmesh Tree Grille (KHTG-595/640)	640mm	595mm	50mm



## Installed Projects

### **St. Helens (London, UK)**

In 2013 we installed manholes and tree grilles in St. Helens. There were several different variations of these products installed in the area.



### **Regents Place (London, UK)**

In 2011 we installed Heelmesh Gratings, Heelmesh Ventilation Grilles, Tree Grille and Manholes in Regents Place



### **Watermark Place (London, UK)**

The Kent Heelmesh Tree Grille was originally designed for surround shade support structures at London's Watermark Place in 2009.





## **Maintenance of Stainless Steel**

Clean the stainless steel components using warm water with a mild detergent with a non-abrasive cloth or sponge. Heavier stains may require the use of a nylon-scouring pad or a stainless steel cleaner.

To remove paint or graffiti use a cloth and Alkaline or solvent paint strippers according to type of paint. In the case of a bead blasted finish, where abrasive cleaning is required, always use a random circular rubbing action with a cloth.

In the case of brushed finishes the surface consists of uniform fine 'scratches' running in one direction so where abrasive cleaning is required always use a straight back and forward rubbing action in the direction of the grain using soap and warm water.

Rust spots or 'tea stains' can occur on the surface of the material, these are normally caused by contamination from ordinary mild steel, particularly in areas where construction work has been undertaken. Such stains can be removed using Rust Remover 410.

In cases where the surface is severely stained because of severe environmental conditions or scratched due to misuse, it may still be possible to restore the original finish using chemicals such as Oxalic Acid solution. There are many stainless steel polishes available to enhance the surface finish.

We recommend Mister Stainless Ltd. as a provider for stainless steel cleaning products.



## Specify

### Choose your steel:

Grade 304 Stainless steel  
Grade 316 Stainless steel  
Mild Steel Galvanised

### Choose Your Grating

Wedge Grating  
Double Wedge Grating  
Civils Heelmesh  
Pedestrian Heelmesh

### Customise your size:

To suit your projects needs  
or go with our standard  
595mm width x 640mm  
length x 50mm dept.

### Specify:

Kent Heelmesh Tree Grille ; Wedge Grating; Inner Circle Radius:145mm, W:595mm, L:640mm, D:50mm;  
Grade 316 Stainless Steel; Satin Finish 320 Grit Polished. Loading FACTA B.

### Choose your finish

Satin Finish  
Satin 320 Grit Polish  
Powdercoated

### Customise you Loading:

FACTA A  
FACTA AA  
FACTA AAA  
FACTA B  
FACTA C  
FACTA D

### Options

Satin Finish  
Satin finish 320 Grit Polish  
Grade 304 Stainless Steel  
Grade 316 Stainless Steel

FACTA Class	Slow Moving Wheel Loads	Kent Safety Test
A	0.6T	0.8T
AA	1.5T	3.1T
AAA	2.5T	5.2T
B	5T	10.1T
C	6.5T	13.2T
D	11T	22T

## Testimonials



*“We have no hesitation in recommending Kent Stainless and look forward to working with them on public building projects in the future”*

**- ARUP**



*“Kent Stainless scored highly in all regards again”*

**- BAM**



*“Your timely delivery and seamless integration with main contractor Skanska made the overall project a huge success”*

**- Forward Swindon**





**Kent Stainless Ltd**

Ardcavan, Wexford, Ireland

**TEL NO:** +353 53 9143216  
**UK FREEPHONE:** 0800 376 8377  
**FAX:** +353 53 9141802  
**WEB:** [www.kentstainless.com](http://www.kentstainless.com)  
**EMAIL:** [info@kentstainless.com](mailto:info@kentstainless.com)

