



Square Tree Grille

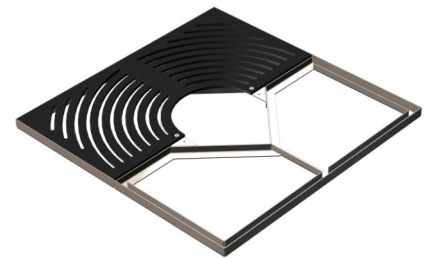


Kent Square Tree Grille KSTG-1200

Specify:

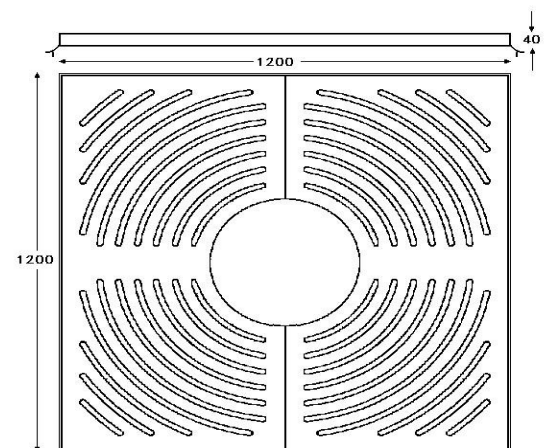
Kent Square Tree Grille KSTG1200; 1200mm overall length;
40mm depth; Grade 316L Stainless Steel; Satin 320 Grit
Polished; 10mm Thick Grille; Low Maintenance.

The Kent Square Tree Grille KSTG-1200 is constructed with Grade 316L Stainless Steel. The external finish of the tree grille is a satin 320 grit polished. The grille has an overall length of 1200mm, overall width of 1200mm and has a 40mm wall thickness. The grille comes fully assembled including the frame and 4 part grilles. It is a long lasting high quality product due to the stainless steel frame. It has an easy on site assemble and it comes with a low maintenance.

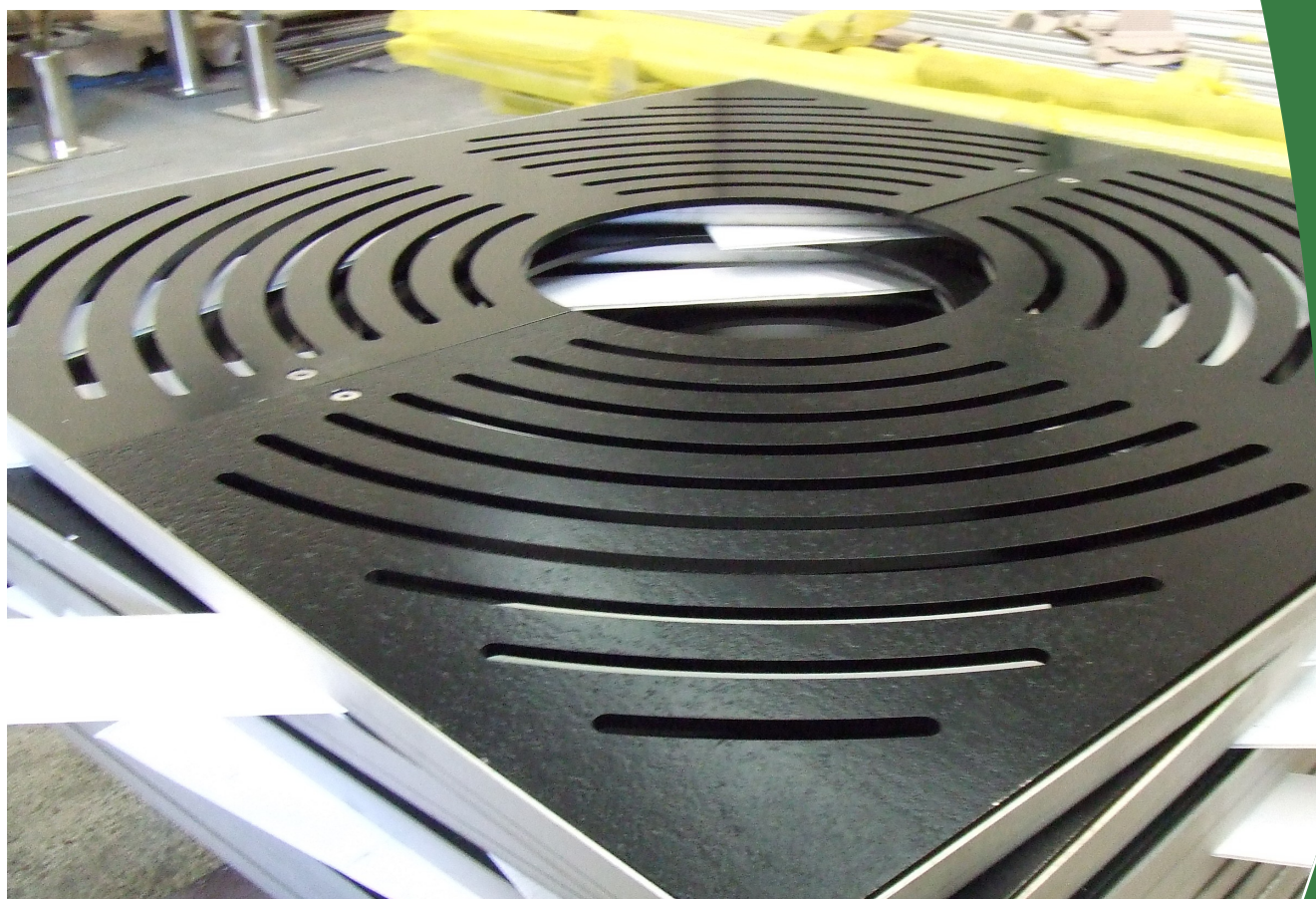


Features

- Grade 316L stainless steel
- Satin 320 grit polished
- 40mm depth
- Comes fully assembled
- Easy installation
- Low maintenance

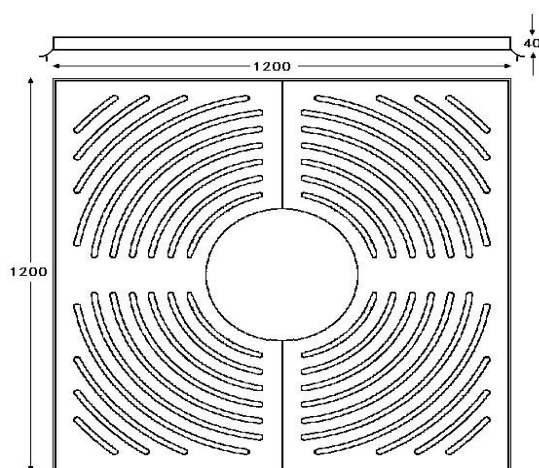


Kent Square Tree Grille KSTG-1200



Product Dimensions:

Reference	Length	Width	Depth
Kent Square Tree Grille KSTG1000	1000mm	1000mm	40mm
Kent Square Tree Grille KSTG1200	1200mm	1200mm	40mm



Kent Bromley Self Watering Planter KBSWP-600

Product Options

Dimension options:

1200mm x 1200mm

1000mm x 1000mm

Specify

Kent Square Tree Grille KSTG1200; 1200mm overall length; 40mm depth;
Grade 316L Stainless Steel; Satin 320 Grit Polished; 10mm Thick Grille; Low
Maintenance

Grade

316L

304L

Bright Satin

Satin finish 320 grit polished

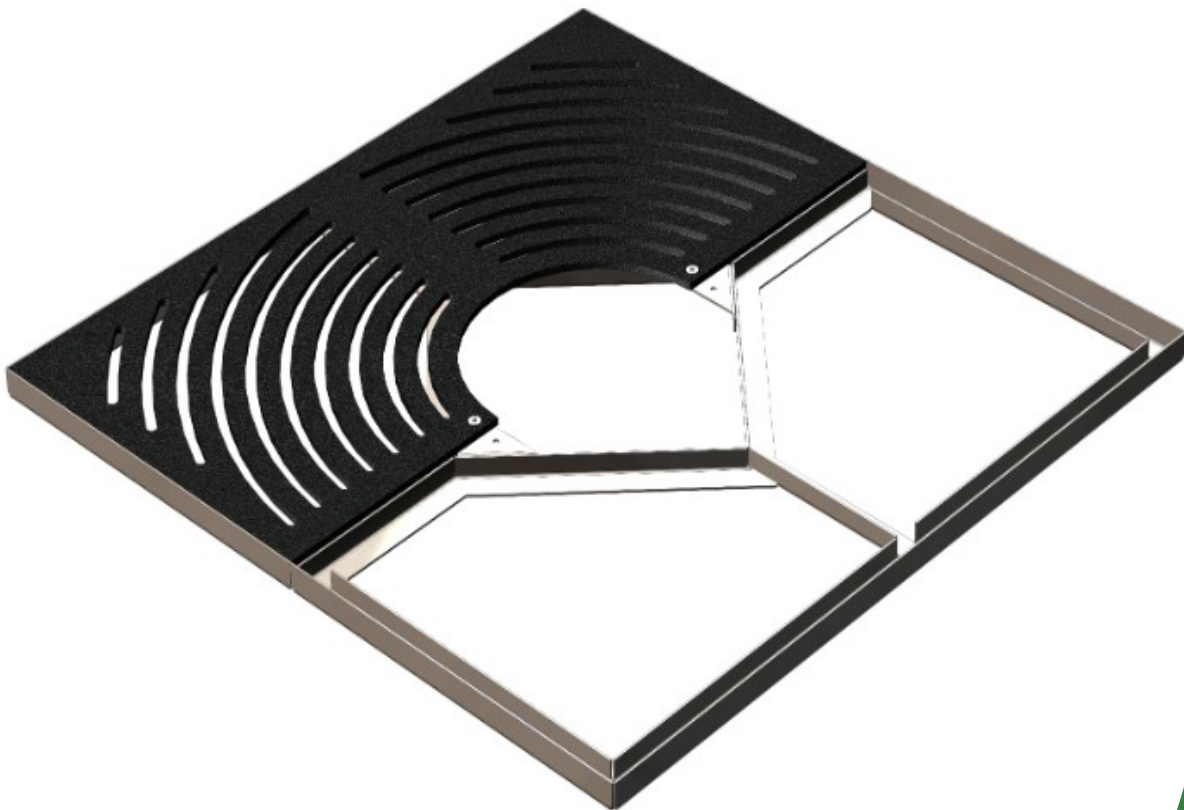
Shot Peened

Bright Peened

Cold Rolled Electropolished

Fixing Details

- Install Tree Grille Frame on an concrete base that has minimum 100mm concrete depth, to insure it is installed safely.
- Position tree Grille Frame so that top level is flush with surrounding paving or other ground finish.
- Turn down concrete ties into concrete bedding.
- When concrete has set fit tree grille sections into frame and if these are lockdown, fasten with anti vandal bolts.



Kent Bromley Self Watering Planter KBSWP-600

Overview

The Kent Square Tree Grille KSTG-1200 is constructed with Grade 316L Stainless Steel. The external finish of the tree grille is a satin 320 grit polished. The grille has an overall length of 1200mm, overall width of 1200mm and has a 40mm wall thickness. The grille comes fully assembled including the frame and 4 part grilles. It is a long lasting high quality product due to the stainless steel frame. It has an easy on site assemble and it comes with a low maintenance.

Maintenance

Stainless Steel:

Clean the stainless steel components using warm water with a mild detergent with a non-abrasive cloth or sponge. Heavier stains may require the use of a nylon-scouring pad or a stainless steel cleaner. To remove paint or graffiti use a cloth and Alkaline or solvent paints and strippers according to type of paint. In the case of a bead blasted finish, where abrasive cleaning is required, always use a random circular rubbing action with a cloth. In the case of brushed finishes the surface consists of uniform fine 'scratches' running in one direction so where abrasive cleaning is required always use a straight back and forward rubbing action in the direction of the grain using soap and warm water. Rust spots or tea stains can occur on the surface of the material, these are normally caused by contamination from ordinary mild steel, particularly in areas where construction work has been undertaken. Such stains can be removed using Rust Remover 410. In cases where the surface is severely stained because of severe environmental conditions or scratched due to misuse, it may still be possible to restore the original finish using chemicals such as Oxalic Acid solution. There are many stainless steel polishes available to enhance the surface finish. We recommend Mister Stainless Ltd. As a provider for stainless steel products.

Kent Square Tree Grille
KSTG-1200

