

KENT WALL MOUNTED UTENSIL STORAGE CABINET

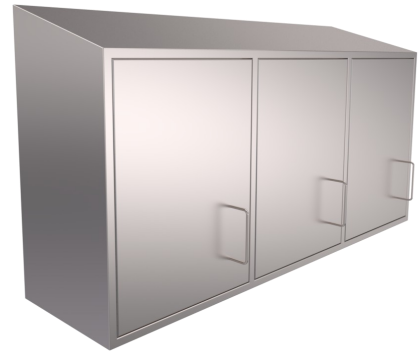
Kent Wall Mounted Utensil Storage Cabinet (KWMSC450) is designed to store and house various utensils. It is suitable for clean rooms, sterile rooms, food processing areas and research areas.

The cabinet also features lockable doors and has the option of adjustable shelving.

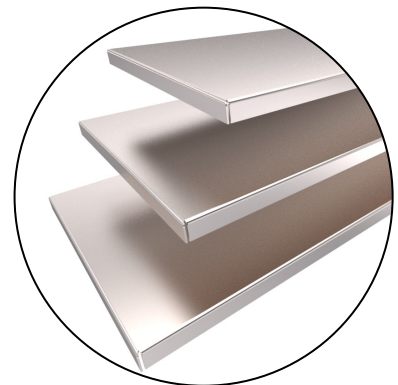
The cabinets can be easily cleaned with minimal crevices throughout the design and the overall sizes can be adjusted to requirement.

Features

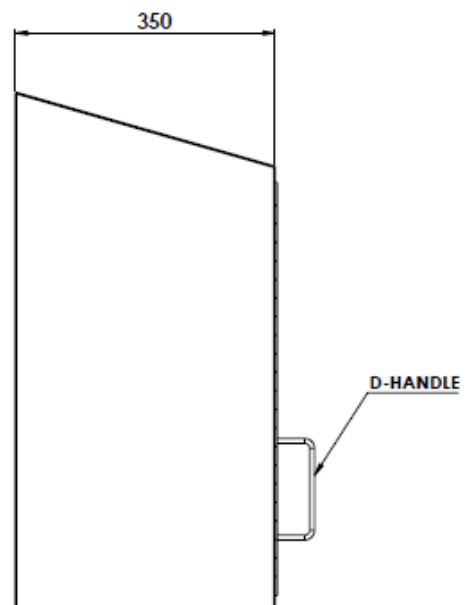
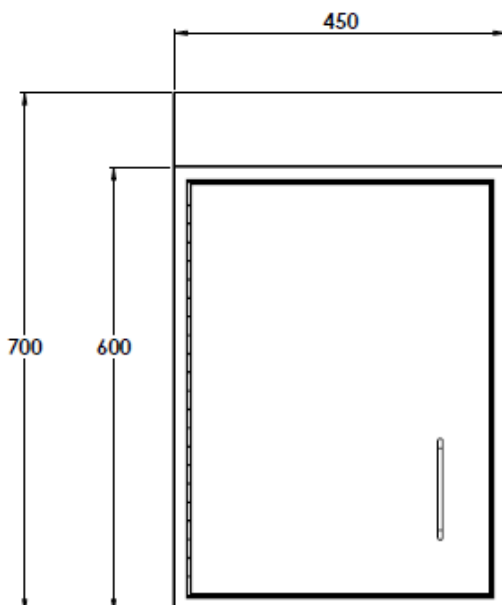
- Grade 304L/316L Stainless Steel
- Satin finish 320 grit polished
- Wall Mounted
- Lockable door
- Laser etched textured
- Customs sizes available
- Sloped top optional



Multi-Bays available



Adjustable Shelving



KENT WALL MOUNTED UTENSIL STORAGE CABINET

Product Code	Length	Depth	Height
KWMSC 450	450	350	700
KWMSC 450	450	350	850
KWMSC 450	450	350	1000

Specify

Choose your steel:
 Grade 304L Stainless steel
 Grade 316L Stainless steel

Specify:
 Kent Wall Mounted Utensil Storage Cabinet(KWMSC450); Grade 304L Stainless Steel;
 450x350x700; 2mm Thick Steel; Satin Finish 320 Grit Polish; Shelved.

Customise your size
 go with our standard size
 450x350x700mm (see above
 for details) or specify your
 own dimensions

Choose your thickness:
 2mm
 3mm

**Features (choose as many
 as you needed):**
 Shelved
 Multi-Bay (state number)
 Laser etched text

