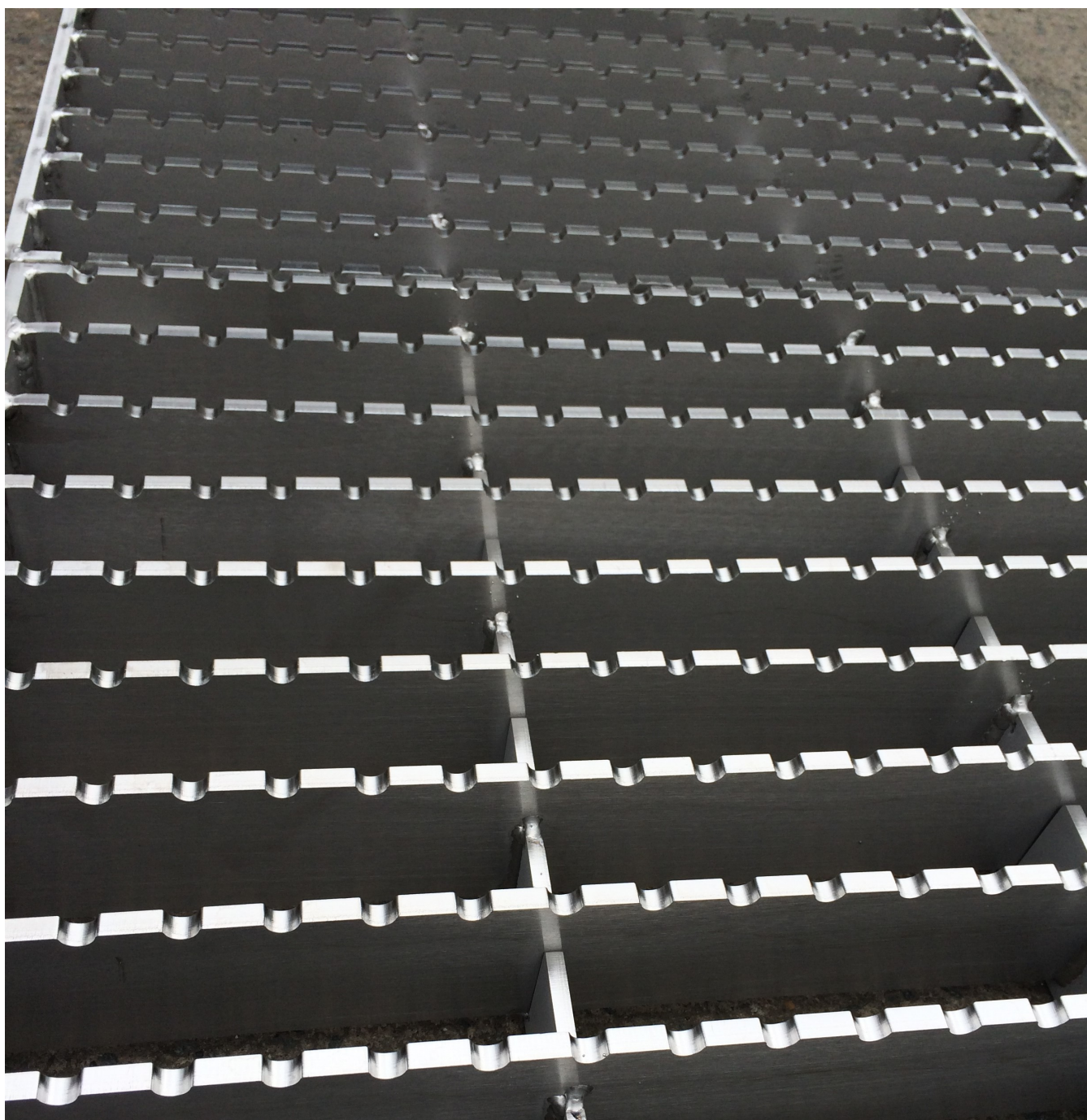




Kent
STAINLESS

Kent Anti Slip Factory Ladder Grating



Drains

Drain Gratings: KAG150-KAG207-KAG250

DESCRIPTION

This is the slip resistant version of our Kent Industrial Factory Ladder Grating which offers added user safety in particularly wet areas. It features a Large Free Area. It is normally available ex stock in 150mm and 200mm widths, 25mm deep with 5mm thick bars. It suits the KSBC range of drainage channels and the Kent Industrial Gully range. It is an excellent choice for areas which have regular heavy traffic, with white welly pedestrians combined with forklift rubber wheels. In areas which require a heavier duty grating, it is regularly ordered as 25mm deep with 8mm bars or sometimes 30mm or 40mm deep with 8mm bars.

FEATURES:

- Grade 304 (1.4301) or 316 (1.4401) Stainless Steel to BS EN 10088
- Extra Strong – up to M125/ B125 or N250/C250 Loading
- Short lead time
- Stock of 150mm Wide Channel Grating
- Stock of 207mm Square Gully Grating
- Variations available for both heavy and extremely heavy duty areas
- 5mm Thick 25mm Deep Standard Thickness – up to 10mm Thick 50mm Deep Heavy Duty
- Suitable for internal factory drainage projects.



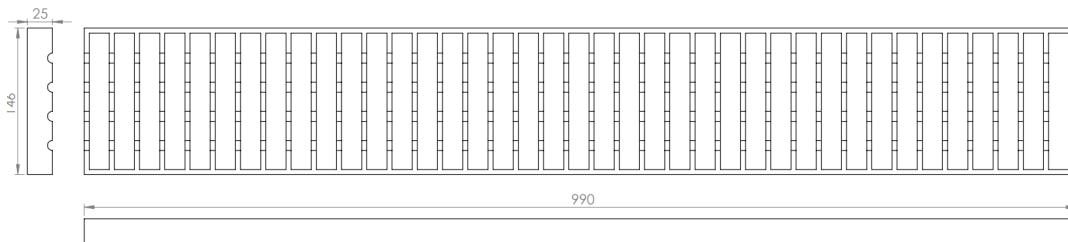
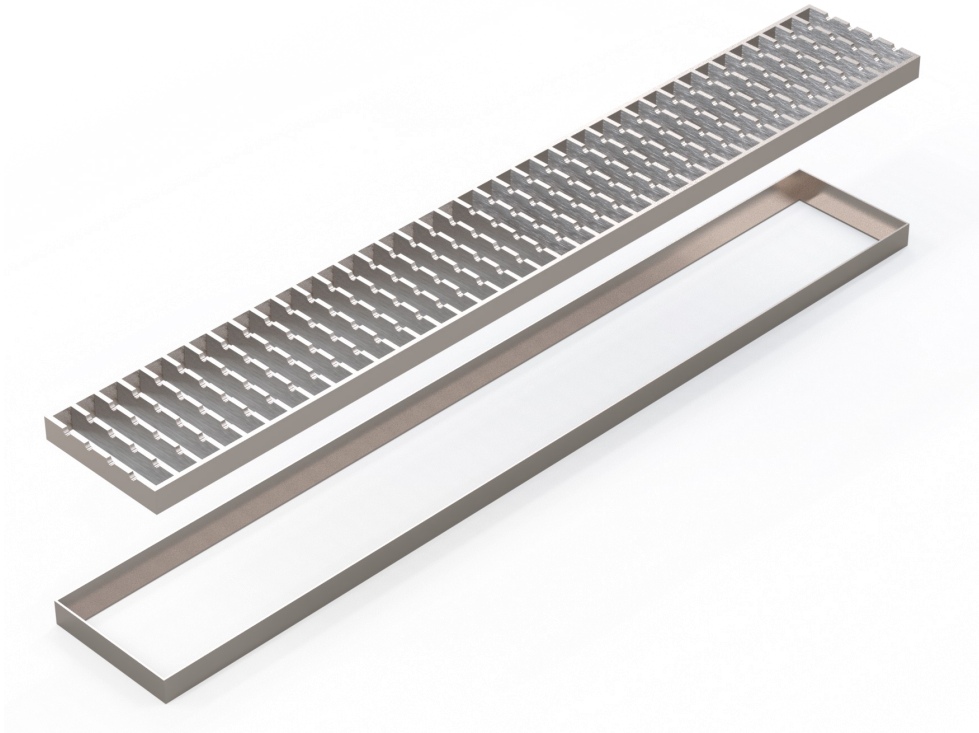
BS EN1253 Loading Class M125 / N250 / P400

Our internal factory gratings can be subjected to very heavy loads and the grating depth and bar thickness will be determined by Kent to suit your project. Suitable for Factories—Meat / Dairy / Food / Drinks



Drains

Drain Gratings: KAG150-KAG207-KAG250



Grating typically supplied on its own or can be specified with an accompanying angle frame (KAF150)

Product code	Bar	Gap	Depth	Lengths	Load Class
KAG 150	5mm	20mm	25-50mm	500-1000mm	B/C/D

Specify: Kent Anti-slip Factory Ladder Grating KAG150; 150mm wide grating; 990mm long; Grade 304 Stainless Steel; Load Class B

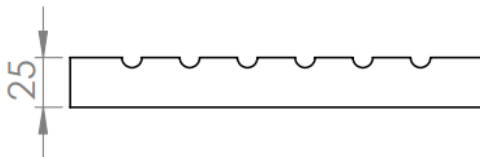
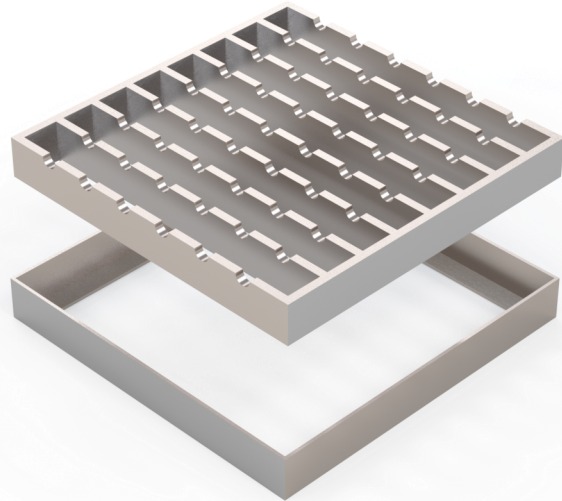
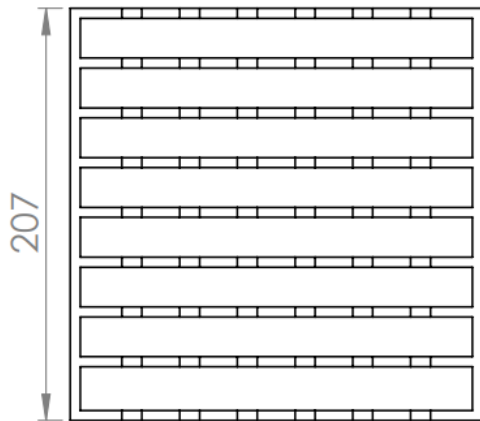
or

Specify: KAF150 Angle Frame with Kent Anti-slip Factory Ladder Grating KAG150; 150mm wide ; 1000mm long; Grade 304 Stainless Steel; Load Class B

(amend underlined words to suit project)

Drains

Drain Gratings: KAG150-KAG207-KAG250



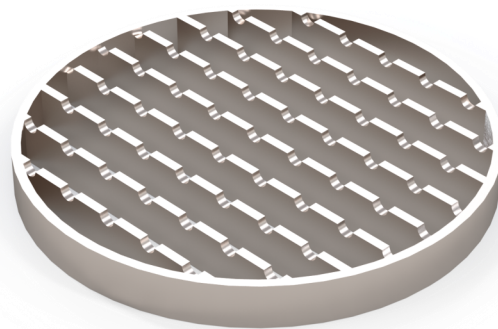
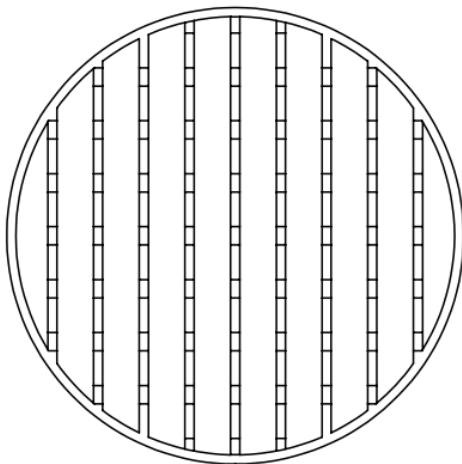
Anti-slip Ladder Grating typically supplied on its own or can be specified with an accompanying angle frame (KAF215), or the KV215 Family of Square Top Drain Gullies

Product code	Bar	Gap	Depth	Square	Load Class
KAG207 SQ	5mm	20mm	25-50mm	207mm	B/C/D

Specify: Kent Anti-slip Factory Ladder Grating KAG207; 207mm wide grating; 207mm long; Grade 304 Stainless Steel; Load Class B

or

Specify: KAF215 Angle Frame with Kent Anti-slip Factory Ladder Grating KLG207; 207mm wide ; 215mm long; Grade 304 Stainless Steel; Load Class B



Anti-slip Ladder Grating typically supplied on its own or can be specified with the KV250 Family of Round Top Drain Gullies

Product code	Bar	Gap	Depth	Diameter	Load Class
KAG250 RD	5mm	20mm	25-50mm	250mm	B/C/D

Specify: Kent Anti-slip Factory Ladder Grating KAG250; 250mm diameter grating; Grade 304 Stainless Steel; Load Class B

Drains

Drain Grating: KAG150-KAG207-KAG250

Stainless Steel Maintenance.

Although corrosion resistant, Stainless Steel needs to be well looked after to have a long service life. Salt, Iron and Grit are the biggest contributors of rusting on stainless steel products.

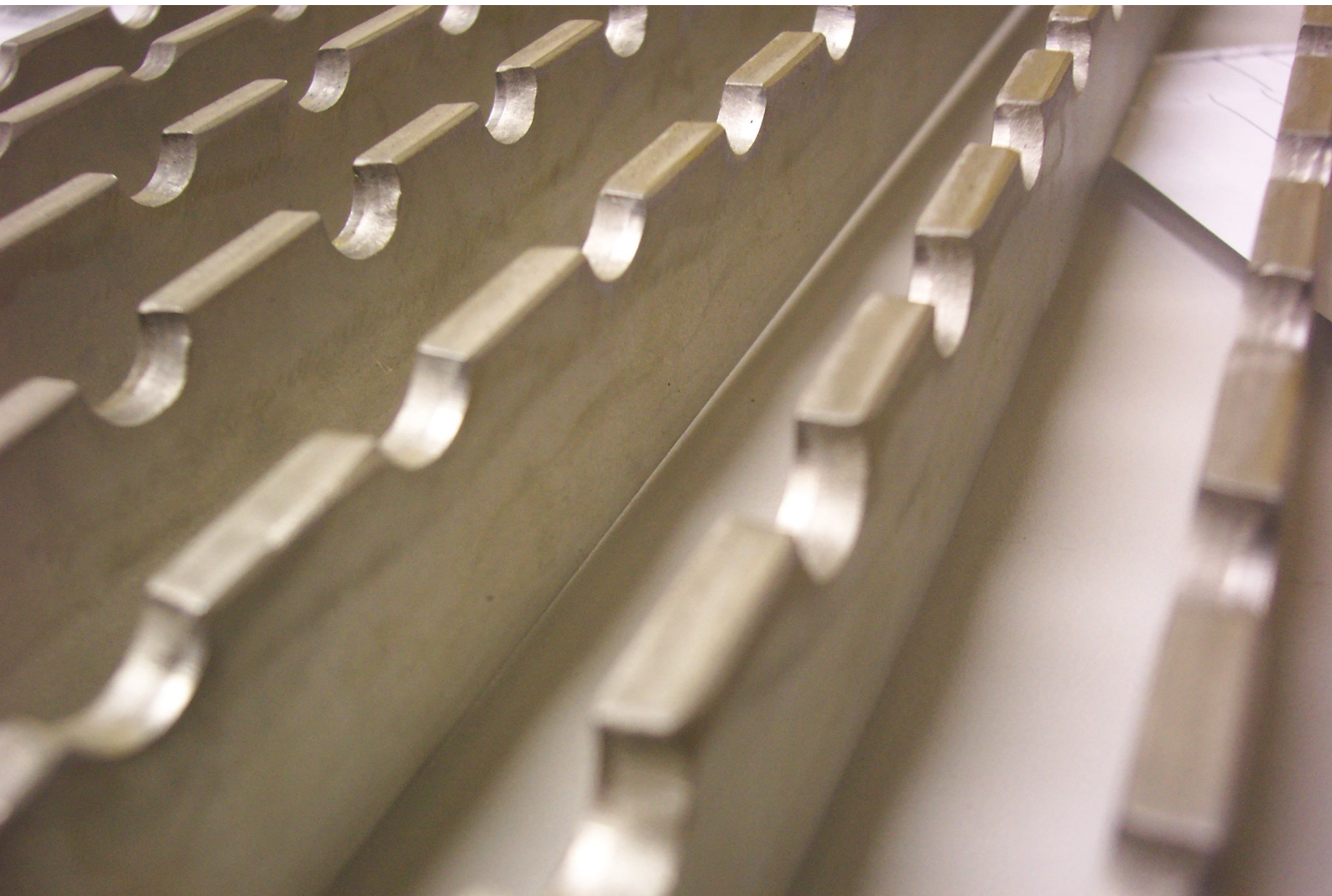
Clean the stainless-steel components using warm water with a mild detergent with a non-abrasive cloth or sponge. Heavier stains may require the use of a nylon scouring pad or a stainless-steel cleaner.

To remove paint or graffiti (or light concrete splashes) use a cloth and alkaline or solvent paint strippers according to type of paint. For Satin Finish Stainless try to follow the direction of the grain when cleaning vigorously or polishing. For Bead Blasted Finish use a circular motion. Rust spots or 'tea stains' can occur on the surface of the material, these are normally caused by contamination from ordinary mild steel, particularly in areas where construction work has been undertaken.

Where contamination of the stainless has occurred from ordinary mild steel coming into contact with the stainless, use Rust Remover 410. In cases where the surface is severely stained as a result of severe environmental conditions or scratched due to misuse, it may still be possible to restore the original finish using chemicals such as Oxalic Acid solution.

At specification/design stage we always recommend a polish that uses electropolishing – eg. Cold Rolled Electropolished or Bright Satin. These polishes combined with using grade 316L stainless will give your stainless project the best chance of an enduring pristine finish. Cleaning as described above once or twice per annum is sufficient in almost all locations. Proximity to salt water or a dry environment where rainwater cannot reach some stainless parts may need more frequent cleaning.

KENT STAINLESS
"A PARTNER YOU CAN RELY ON"



Contact us

Phone: +353 53 914 3216

UK Freephone: 0800 376 8377

USA: 781 374 7391

Email: info@kentstainless.com

Address: Ardavan, Wexford, Ireland, Y35 CRW2

