



Kent
STAINLESS

Kent Ladder Grating



Drains

Drain Gratings: KLG150-KLG207-KLG250

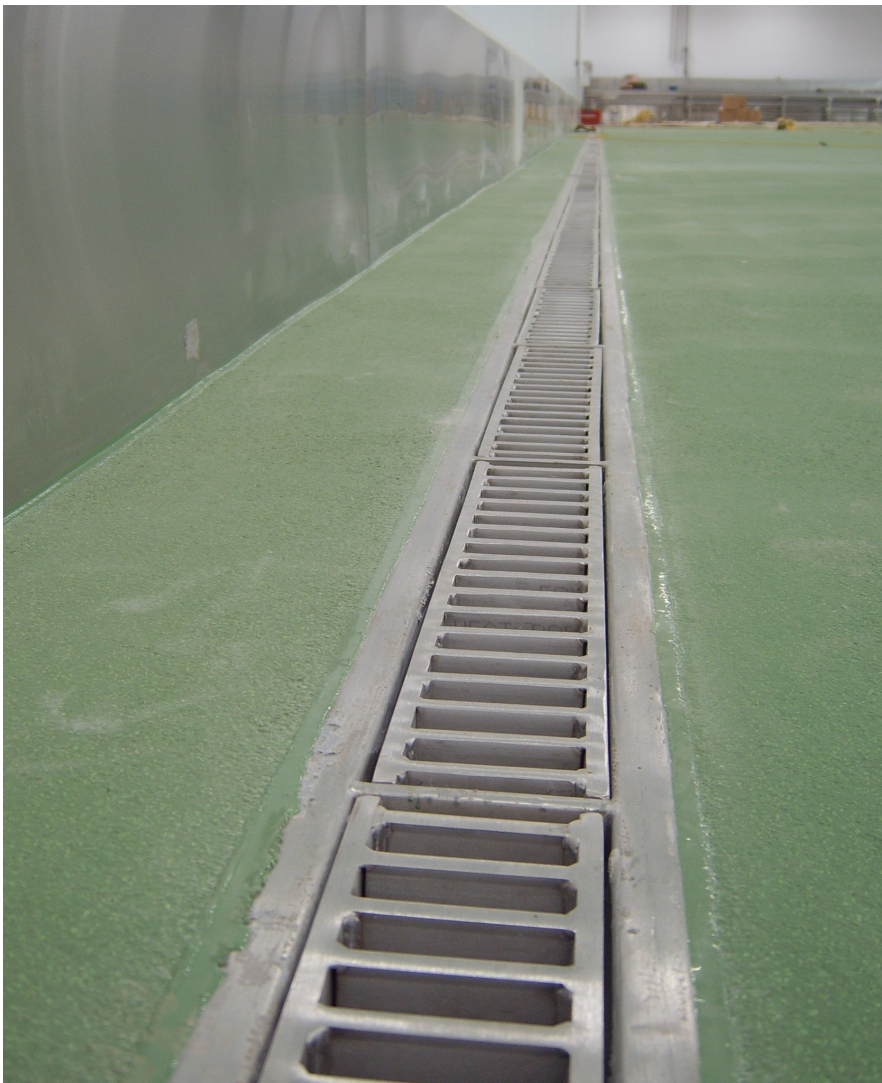
DESCRIPTION

Kent Industrial Factory Ladder Grating KLG150 is normally used to suit the KSBC (Kent Standard Box Channel) range of drainage channels or the KAF Angle Frame and most Kent Industrial Gullies. The KV215 Gullies are most popular.

The most common size for KLG is either 150mm and 200mm widths. For areas that require foot traffic and up to 1 ton pallet trucks the grating can be 25mm deep with 5mm thick load bars. In areas which require a heavier duty grating, it is regularly supplied as 25mm deep with 8mm bars or sometimes 30mm or 40mm deep with 8mm bars. A spacing of 20mm between bars gives this a large free area. It is therefore ideal for factories with pedestrian or heavy forklift traffic, with frequent, high intensity wash down. They are generally sold unlocked. This type of grating is very regularly specified for Meat, Dairy, Beverage, Pharmaceutical factories.

RECOMMENDED FOR:

- White welly traffic
- Up to 20 Tonne forklifts
- Delivery vehicle access
- Pallet trucks

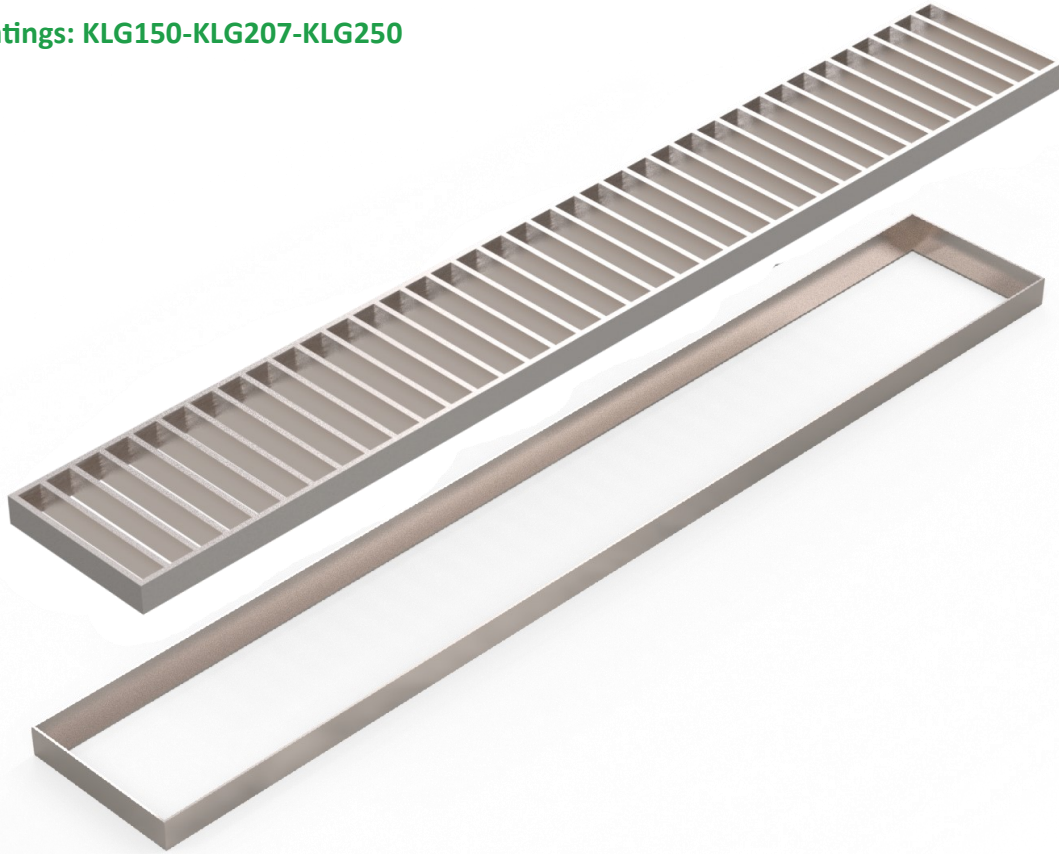


BS EN1253 Loading Class L15 / R50 / M125 / N250 / P400

Our internal factory gratings can be subjected to very heavy loads and the grating depth and bar thickness will be determined by Kent to suit your project. Suitable for Factories—Meat / Dairy / Food / Drinks

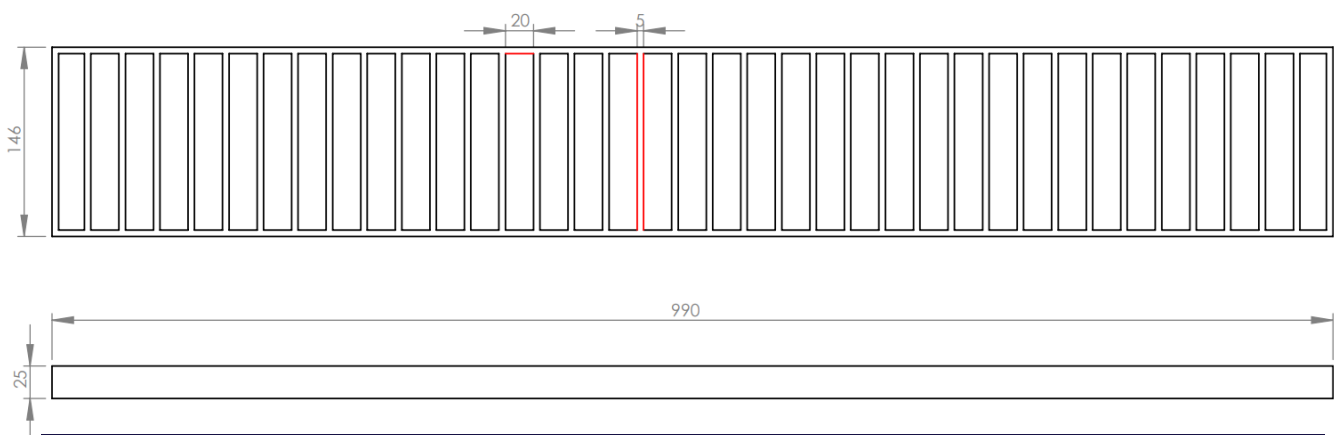
Drains

Drain Gratings: KLG150-KLG207-KLG250



Ladder Grating typically supplied on its own or can be specified with an accompanying angle frame (KAF150)

Product code	Bar	Gap	Depth	Lengths	Load Class
KLG 150(foot traffic)	5mm	20mm	25-50mm	500-1000mm	B/C/D
KLG150(heavy duty)	8mm	20mm	25-50mm	500-1000mm	B/C/D



Specify: Kent Ladder Grating KLG150; 150mm wide grating; 990mm long; Grade 304 Stainless Steel; Load Class B

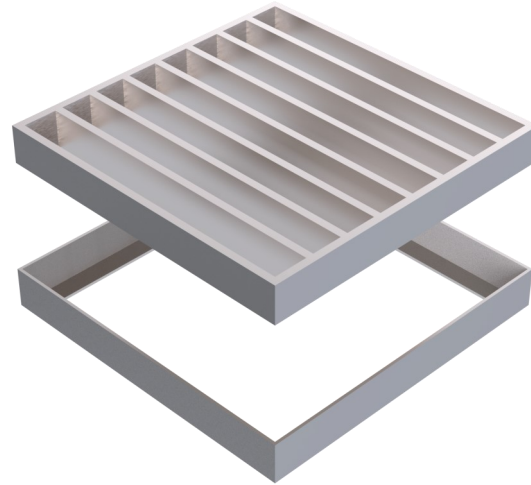
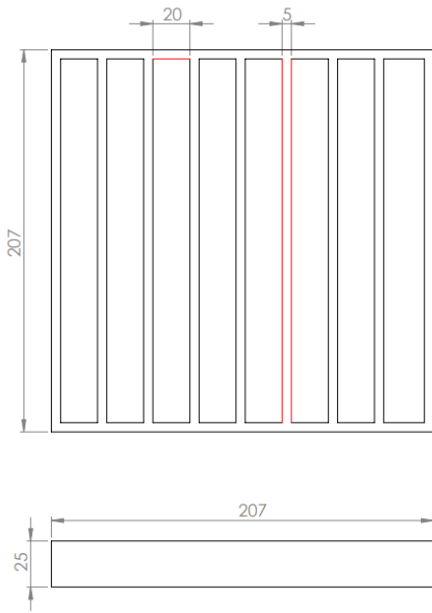
or

Specify: KAF150 Angle Frame with Kent Ladder Grating KLG150; 150mm wide ; 1000mm long; Grade 304 Stainless Steel; Load Class B

(amend underlined words to suit project)

Drains

Drain Gratings: KLG150-KLG207-KLG250



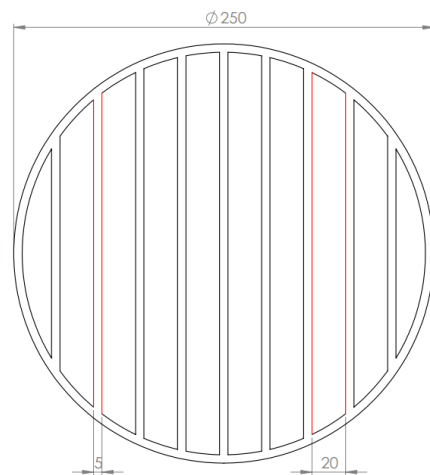
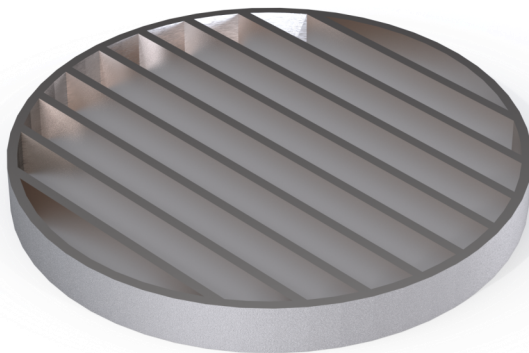
Ladder Grating typically supplied on its own or can be specified with an accompanying angle frame (KAF215), or the KV215 Family of Square Top Drain Gullies

Product code	Bar	Gap	Depth	Square	Load Class
KLG 207	5mm	20mm	25-50mm	150 /150—500/500mm	B/C/D
KLG207	8mm	20mm	25-50mm	150/150 —500/500mm	B/C/D

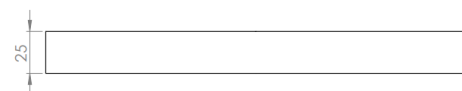
Specify: Kent Ladder Grating KLG207; 207mm wide grating; 207mm long; Grade 304 Stainless Steel; Load Class B

or

Specify: KAF215 Angle Frame with Kent Ladder Grating KLG207; 207mm wide ; 215mm long; Grade 304 Stainless Steel; Load Class B



Ladder Grating typically supplied on its own or can be specified with the KV250 Family of Round Top Drain Gullies



Product code	Bar	Gap	Depth	Diameter	Load Class
KLG 250	5mm	20mm	25-50mm	250mm	B/C/D

Specify: Kent Ladder Grating KLG250; 250mm diameter wide grating; Grade 304 Stainless Steel; Load Class B

Drains

Drain Gratings: KLG150-KLG207-KLG250

Stainless Steel Maintenance.

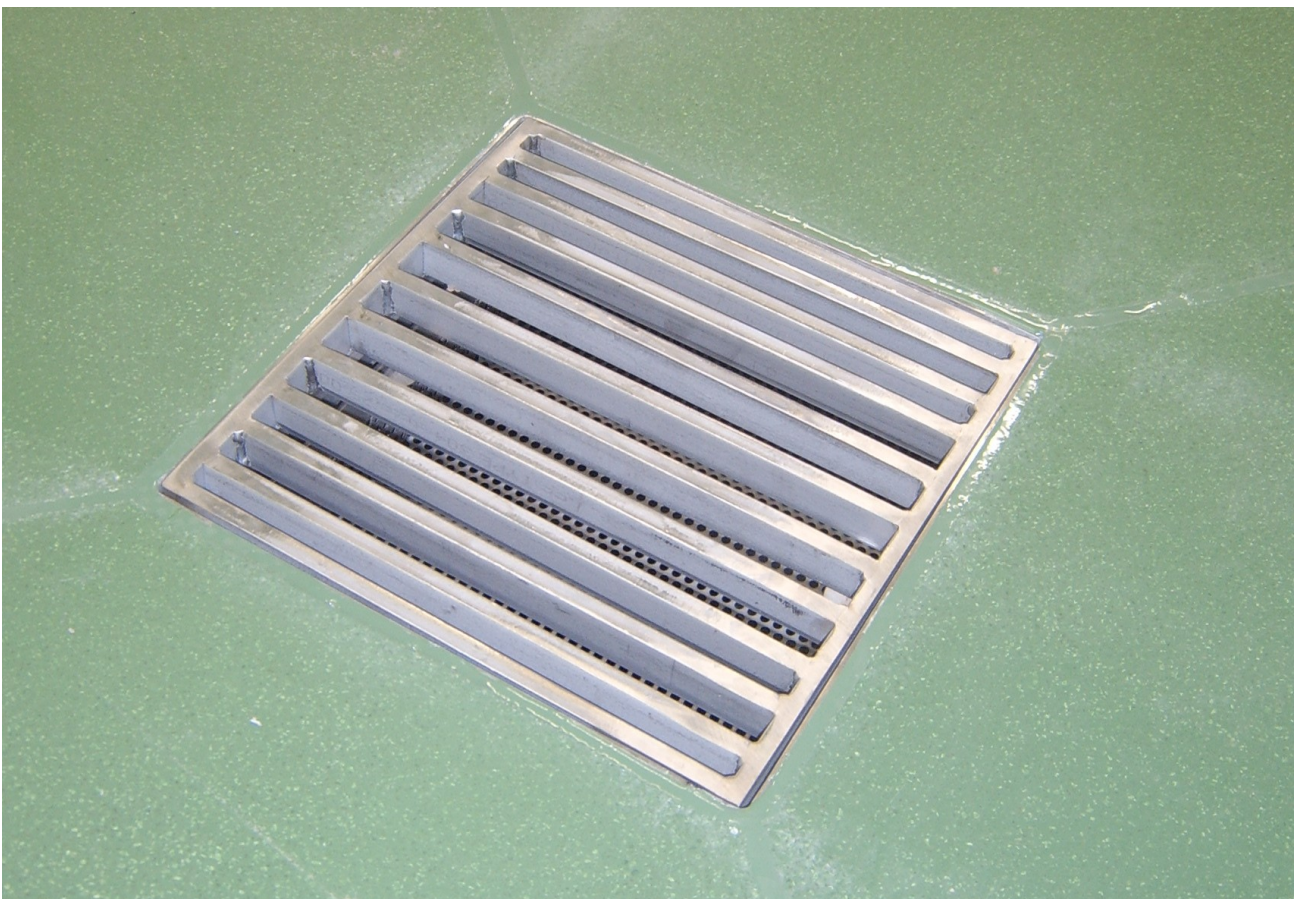
Although corrosion resistant, Stainless Steel needs to be well looked after to have a long service life. Salt, Iron and Grit are the biggest contributors of rusting on stainless steel products.

Clean the stainless-steel components using warm water with a mild detergent with a non-abrasive cloth or sponge. Heavier stains may require the use of a nylon scouring pad or a stainless-steel cleaner.

To remove paint or graffiti (or light concrete splashes) use a cloth and alkaline or solvent paint strippers according to type of paint. For Satin Finish Stainless try to follow the direction of the grain when cleaning vigorously or polishing. For Bead Blasted Finish use a circular motion. Rust spots or 'tea stains' can occur on the surface of the material, these are normally caused by contamination from ordinary mild steel, particularly in areas where construction work has been undertaken.

Where contamination of the stainless has occurred from ordinary mild steel coming into contact with the stainless, use Rust Remover 410. In cases where the surface is severely stained as a result of severe environmental conditions or scratched due to misuse, it may still be possible to restore the original finish using chemicals such as Oxalic Acid solution.

At specification/design stage we always recommend a polish that uses electropolishing – eg. Cold Rolled Electropolished or Bright Satin. These polishes combined with using grade 316L stainless will give your stainless project the best chance of an enduring pristine finish. Cleaning as described above once or twice per annum is sufficient in almost all locations. Proximity to salt water or a dry environment where rainwater cannot reach some stainless parts may need more frequent cleaning.



KENT STAINLESS
“A PARTNER YOU CAN RELY ON”



Contact us

Phone: +353 53 914 3216
UK Freephone: 0800 376 8377
USA: 781 374 7391

Email: info@kentstainless.com
Address: Ardavan, Wexford, Ireland, Y35 CRW2

