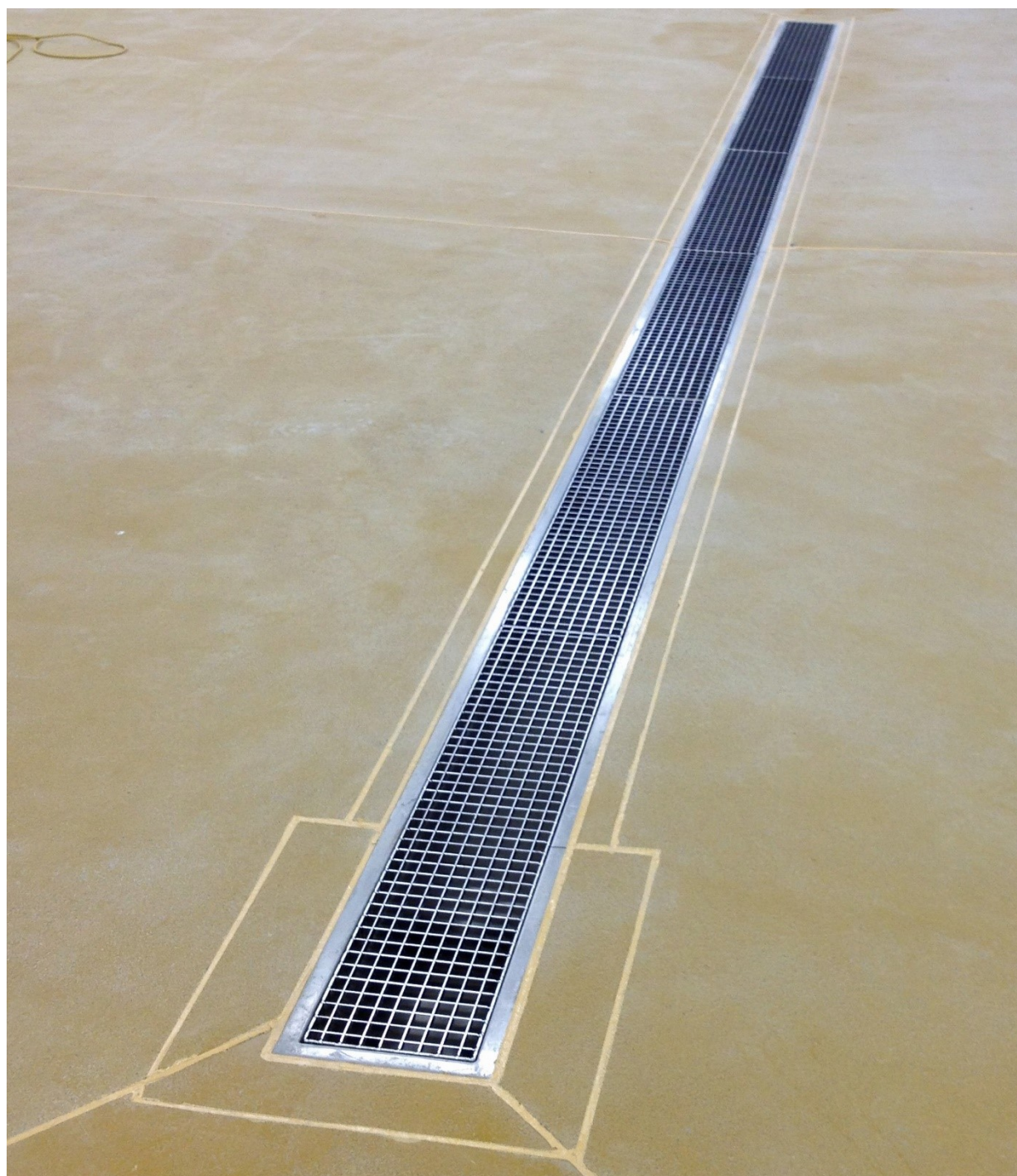




Kent
STAINLESS

Kent Plain Mesh Grating



Drains

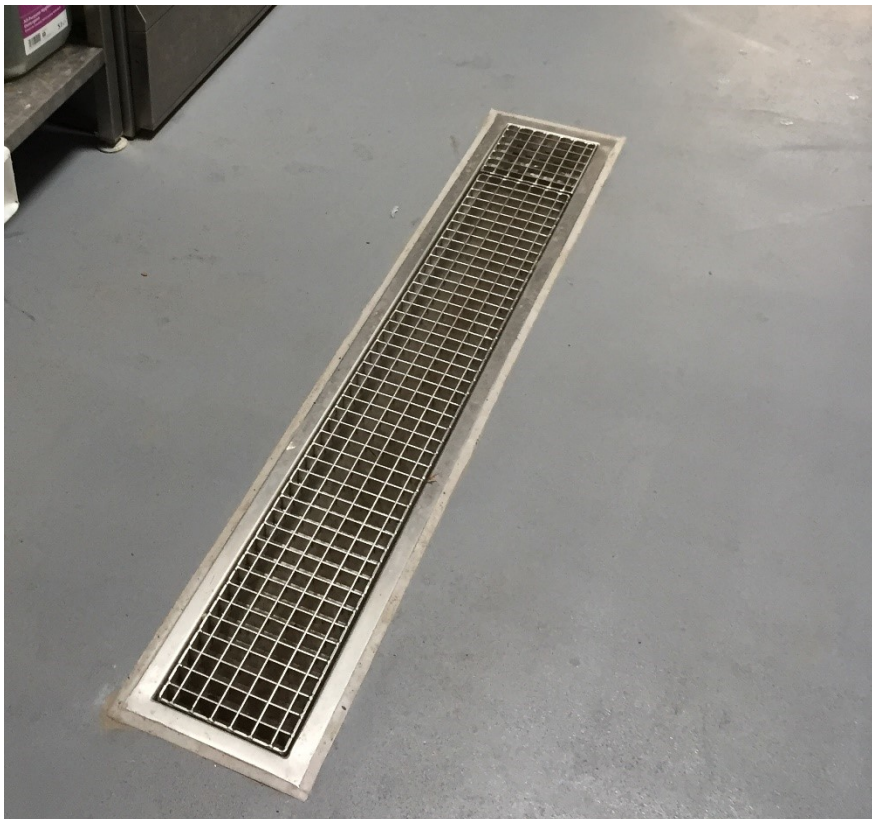
Drain Gratings: KMG150-KMG207-KMG250

DESCRIPTION

Kent Industrial Plain Mesh Grating is normally used to suit the KSBC range of drainage channels or KAF Angle Frame range and most Kent Industrial Gullies. It is available ex stock normally in 150mm and 200mm widths, each 25mm deep with 2mm load bars. In areas which require a heavier duty grating, it is regularly ordered as 25mm deep with 3mm load bars or sometimes it can be ordered as 30mm or 40mm deep with 3mm load bars. A spacing of 20mm between bars gives this a large free area. It is therefore ideal for factories with pedestrian or medium duty traffic, with frequent, high intensity washdown. Lockdown version is optional. This type of grating is very regularly specified for Meat, Dairy, Beverage and Pharmaceutical factories.

FEATURES:

- Grade 304 (1.4301) or 316 (1.4401) Stainless Steel to BS EN 10088
- Short lead time
- Stock of 150mm wide channel Grating
- Stock of 207mm Square Gully Grating
- Variations available for both heavy and light duty areas
- 22/22 25 2mm Standard Thickness – 22/22 25 x 3mm Heavy Duty
- Suitable for internal factory drainage and commercial kitchen drainage projects.

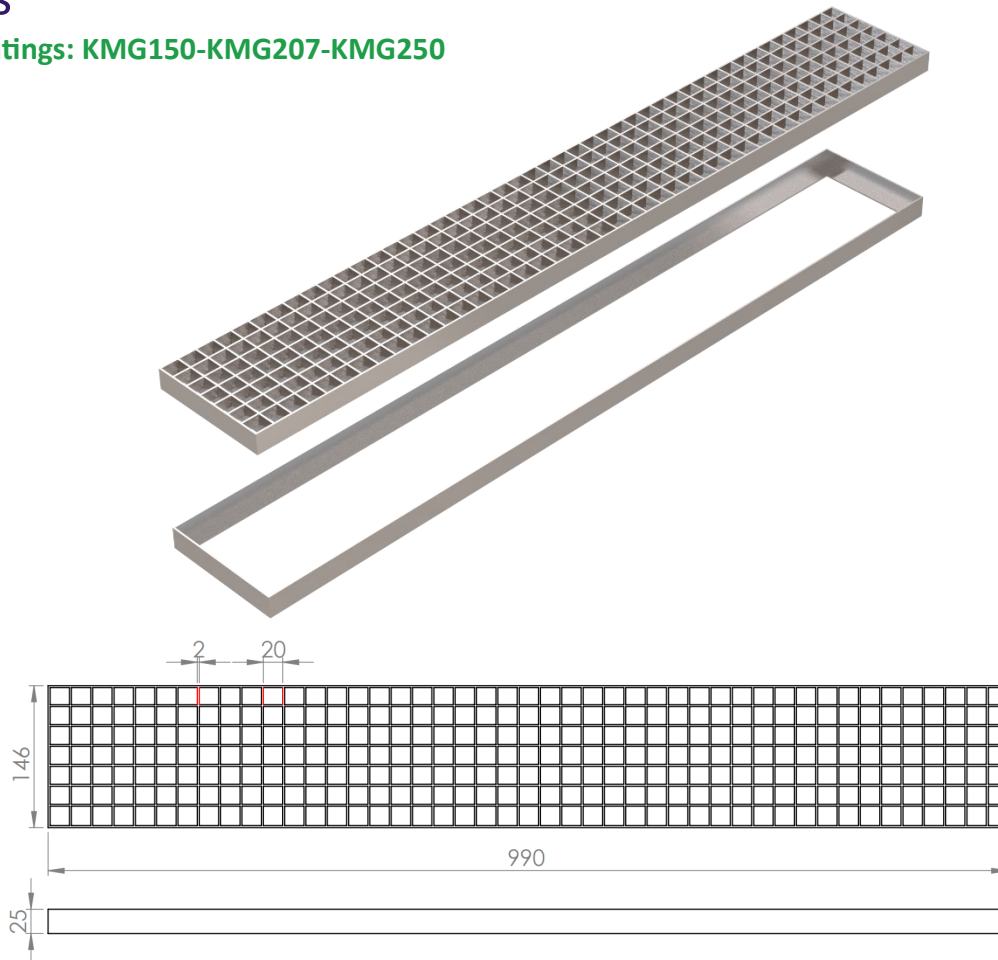


BS EN1253 Loading Class L15 / R50 / M125

Our internal factory gratings can be subjected to very heavy loads and the grating depth and bar thickness will be determined by Kent to suit your project. Suitable for Factories—Meat / Dairy / Food / Drinks

Drains

Drain Gratings: KMG150-KMG207-KMG250



Plain Mesh Grating typically supplied on its own or can be specified with an accompanying angle frame (KAF150)

Product code	Bar	Centres	Depth	Lengths	Load Class
KMG150(2)	2mm	22mm x 22mm	25-50mm	500-1000mm	A/B
KMG150(3)	3mm	22mm x 22mm	25-50mm	500-1000mm	A/B



Specify: Kent Plain Mesh Grating KMG150; 150mm wide grating; 990mm long; Grade 304 Stainless Steel; Load Class B

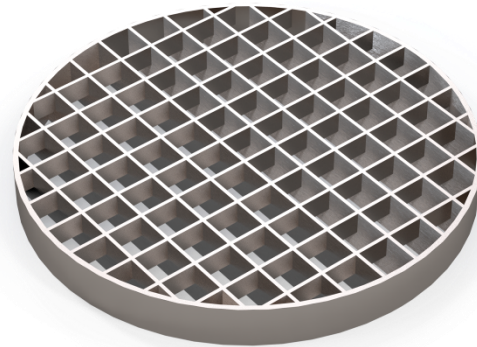
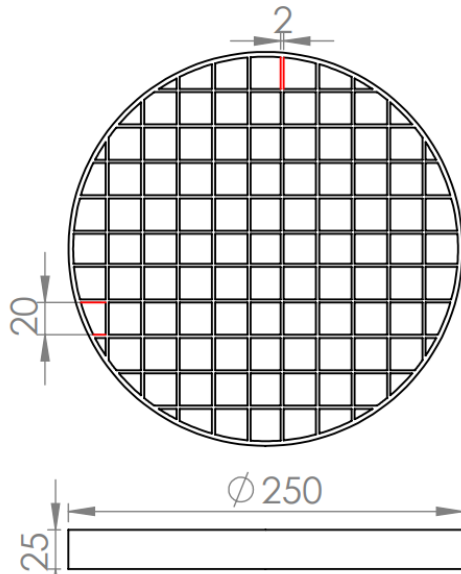
or

Specify: KAF150 Angle Frame with Kent Plain Mesh Grating KMG150; 150mm wide ; 1000mm long; Grade 304 Stainless Steel; Load Class B

(amend underlined words to suit project)

Drains

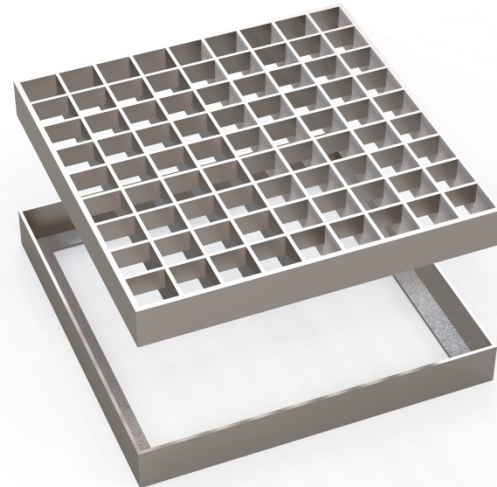
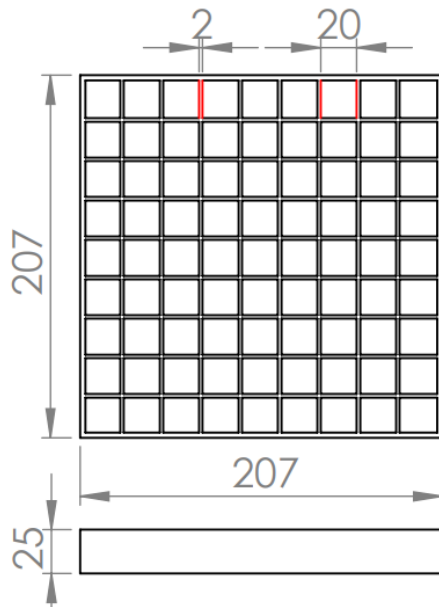
Drain Gratings: KMG150-KMG207-KMG250



Plain Mesh Grating Round typically supplied on its own or can be specified with the KV250 Family of Round Top Drain Gullies

Product code	Bar	Centre's	Depth	Load Class
KMG250 RD	2mm	22mm x 22mm	25mm	A/B

Specify: Kent Plain Mesh Grating **KMG250**; **250mm** diameter wide grating; Grade **304** Stainless Steel; Load Class **B**



Plain Mesh Grating Square typically supplied on its own or can be specified with an accompanying angle frame (KAF215), or the KV215 Family of Square Top Drain Gullies

Product code	Bar	Centre's	Depth	Load Class
KMG207 SQ	2mm	22mm x 22mm	25mm	A./B

Specify: Kent Plain Mesh Grating **KMG207**; **207mm** square grating; **207mm** long; Grade **304** Stainless Steel; Load Class **B**

or

Specify: **KAF215** Angle Frame with Kent Plain Mesh Grating **KMG207**; **207mm** wide ; **215mm** long; Grade **304** Stainless Steel; Load Class **B**

Drains

Drain Grating: KMG150-KMG207-KMG250

Stainless Steel Maintenance.

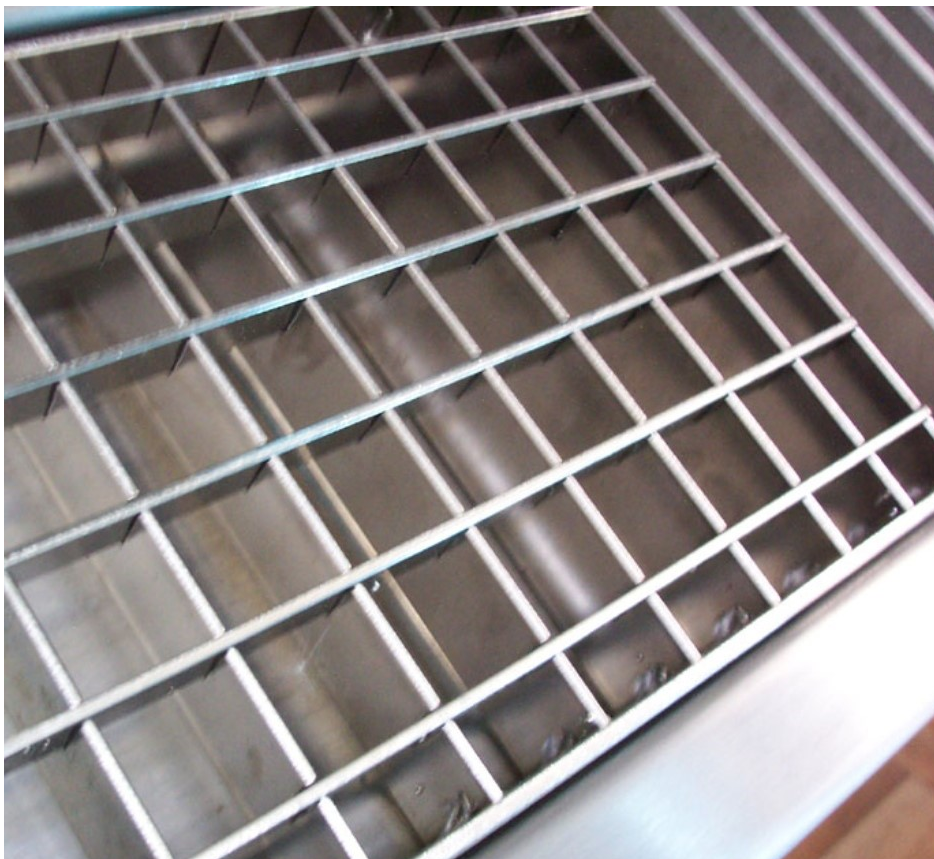
Although corrosion resistant, Stainless Steel needs to be well looked after to have a long service life. Salt, Iron and Grit are the biggest contributors of rusting on stainless steel products.

Clean the stainless-steel components using warm water with a mild detergent with a non-abrasive cloth or sponge. Heavier stains may require the use of a nylon scouring pad or a stainless-steel cleaner.

To remove paint or graffiti (or light concrete splashes) use a cloth and alkaline or solvent paint strippers according to type of paint. For Satin Finish Stainless try to follow the direction of the grain when cleaning vigorously or polishing. For Bead Blasted Finish use a circular motion. Rust spots or 'tea stains' can occur on the surface of the material, these are normally caused by contamination from ordinary mild steel, particularly in areas where construction work has been undertaken.

Where contamination of the stainless has occurred from ordinary mild steel coming into contact with the stainless, use Rust Remover 410. In cases where the surface is severely stained as a result of severe environmental conditions or scratched due to misuse, it may still be possible to restore the original finish using chemicals such as Oxalic Acid solution.

At specification/design stage we always recommend a polish that uses electropolishing – eg. Cold Rolled Electropolished or Bright Satin. These polishes combined with using grade 316L stainless will give your stainless project the best chance of an enduring pristine finish. Cleaning as described above once or twice per annum is sufficient in almost all locations. Proximity to salt water or a dry environment where rainwater cannot reach some stainless parts may need more frequent cleaning.



KENT STAINLESS
"A PARTNER YOU CAN RELY ON"



Contact us

Phone: +353 53 914 3216
UK Freephone: 0800 376 8377
USA: 781 374 7391

Email: info@kentstainless.com
Address: Ardavan, Wexford, Ireland, Y35 CRW2

