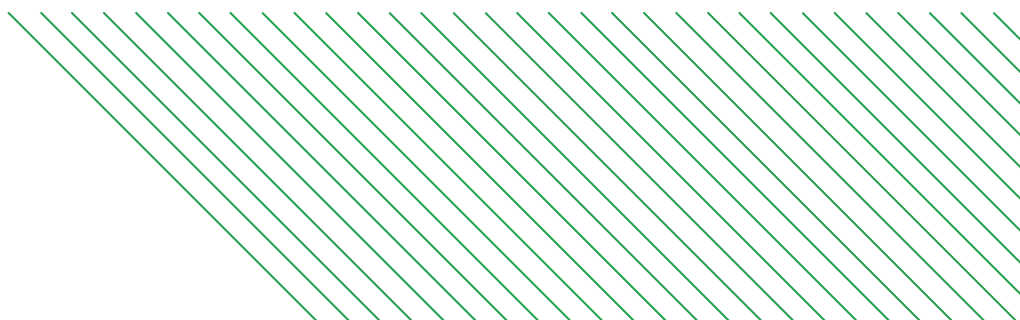
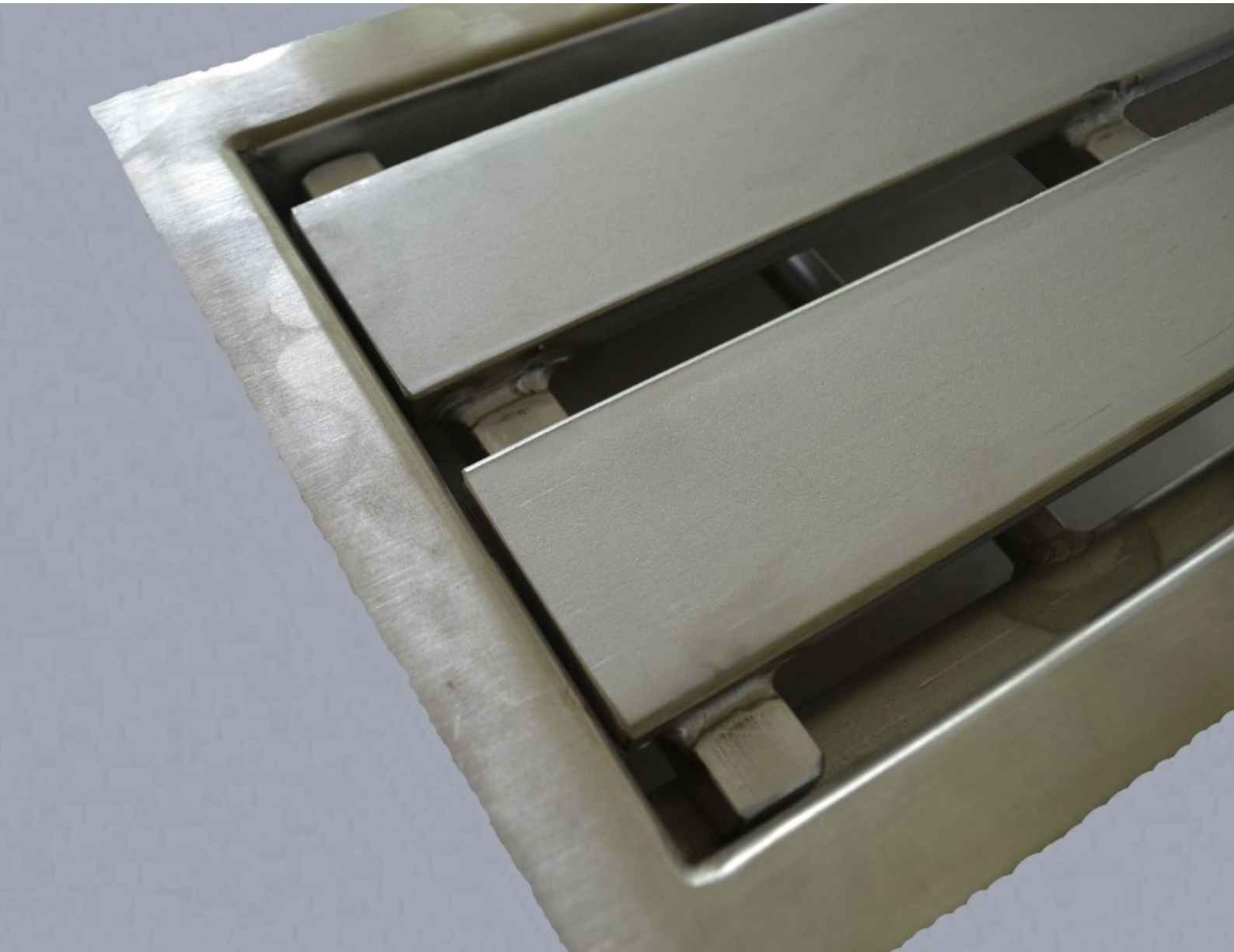


Kent
STAINLESS

Industrial Annular Grating



Drains

Drain Gratings: KANG150-KANG207-KANG250

DESCRIPTION

Kent Industrial Annular Gratings are particularly strong, and are characterised by 5mm, 8mm or 10mm flat bars running the length of the channel with support bracket that are welded locally or full width on the underside depending on the loading required. When installed they have a visible slot all round and water discharges uninterrupted into the channel rather than running across the grating. They are designed for use in Food/Dairy/Beverage and Pharmaceutical Factories which have power hose washdown periods.

Customisable: Stainless Grade, Width, Length and Loading.

FEATURES:

- Up to EN1253 Load Class M125
- Up to EN124 Load Class E600
- Extreme heavy loading grates up to 60 ton

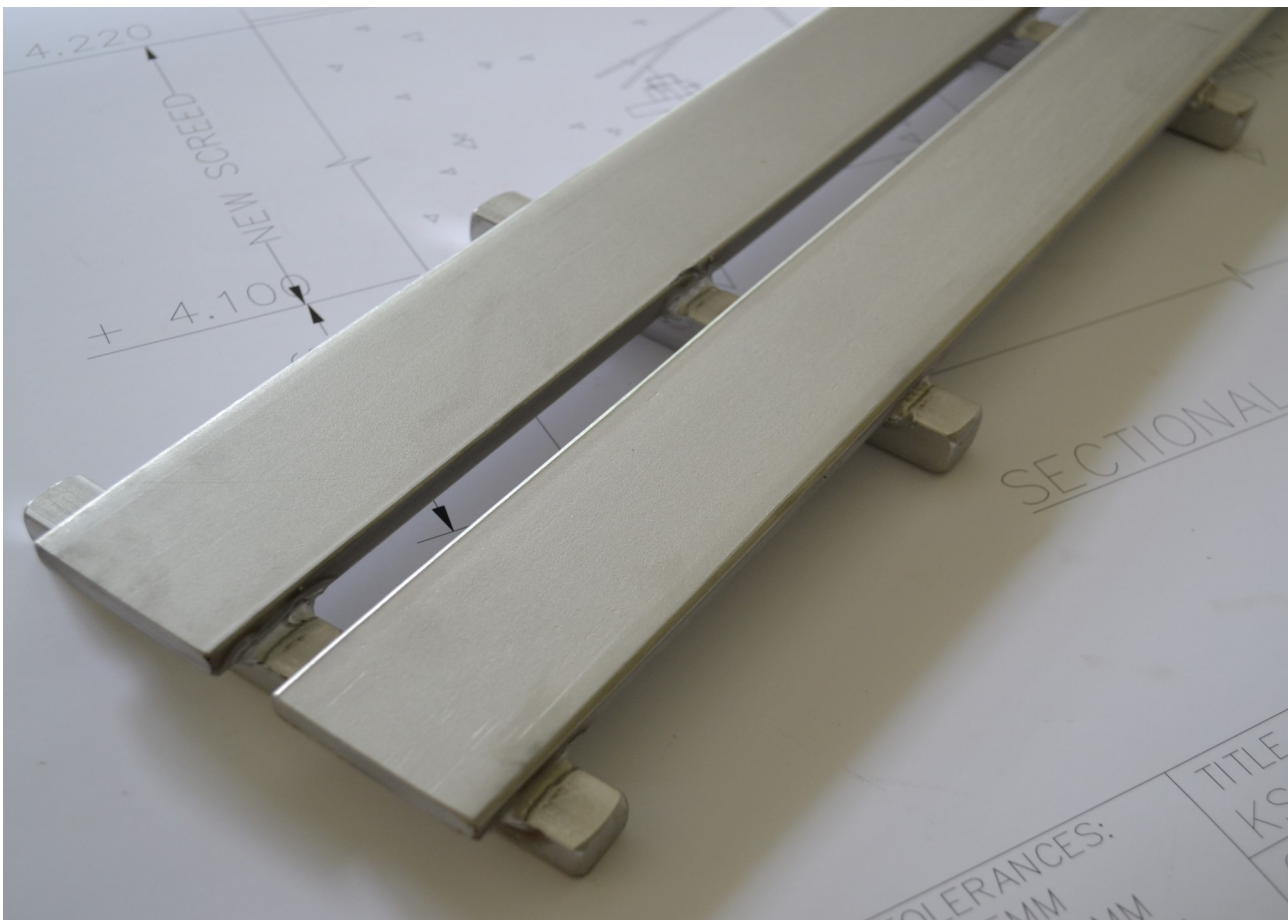
BS EN1253 Loading Class M125

Our internal factory gratings can be subjected to very heavy loads and the grating depth and bar thickness will be determined by Kent to suit your project.

This Anti-slip Mesh Grating suits Light to Medium Class Loading -and should not be installed where pneumatic tyres are turning. Suitable for Factories—Meat / Dairy / Food / Drinks

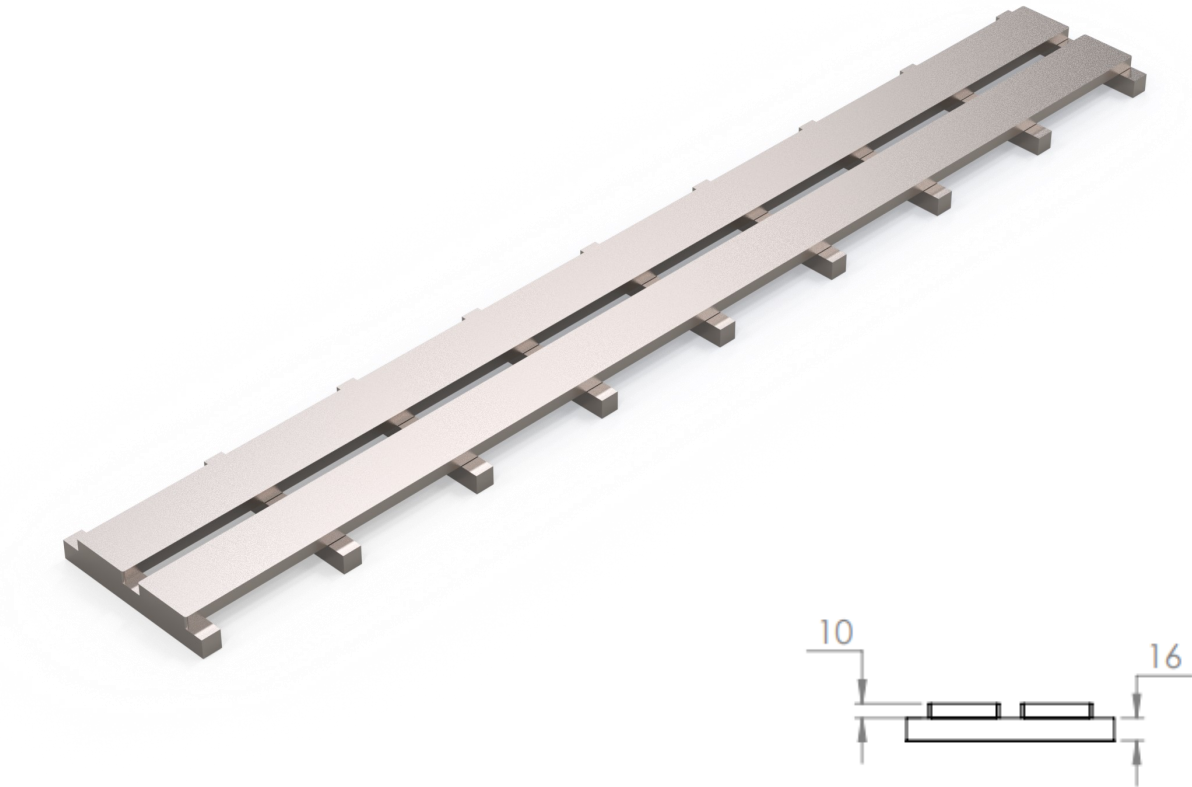
BS EN124 Loading Class B125 / C250 / D400 / E600

While EN1253 deals with internal building drainage, we understand that our client base often requires gratings that exceed the M125 maximum load covered by that standard. Specifications can be written to C250 / D400 and E600



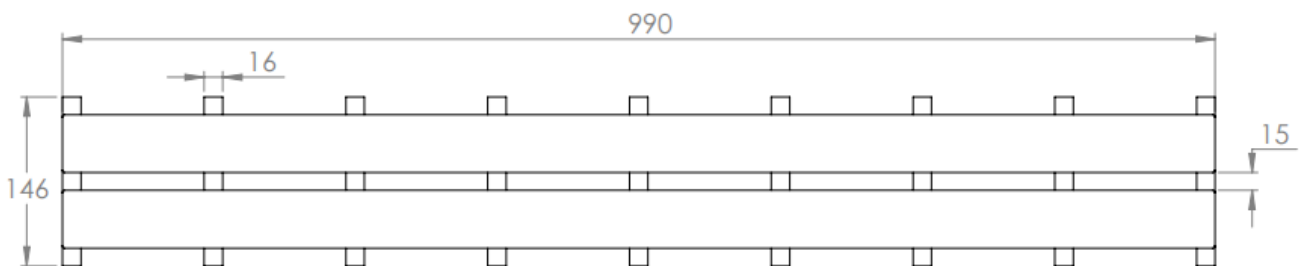
Drains

Drain Gratings: KANG150-KANG207-KANG250



Industrial Annular Channel Grating is typically supplied as part of a drain channel system

Product code	Bar	Depth	Lengths	Load Class
KANG 150	16	26	990	C/D/E

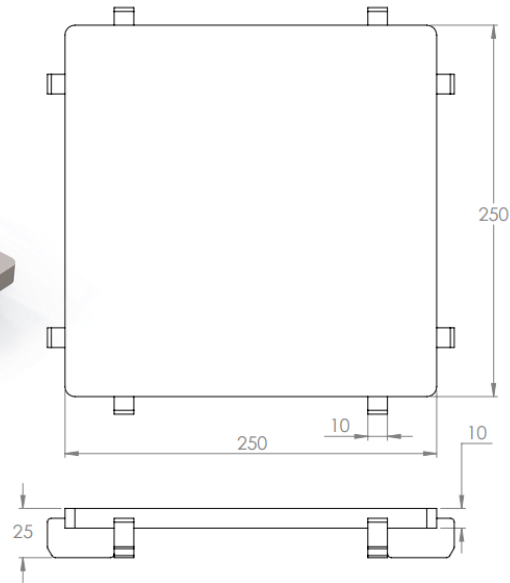
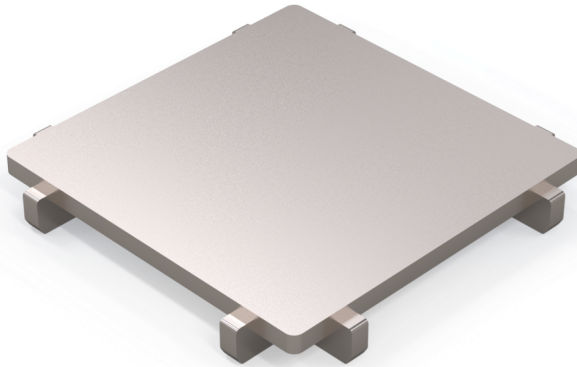


Specify: Kent Industrial Annular Channel Grating KANG150; 150mm wide grating; 990mm long; Grade 304 Stainless Steel; Load Class D

(amend underlined words to suit project)

Drains

Drain Gratings: KANG150-KANG207-KANG250

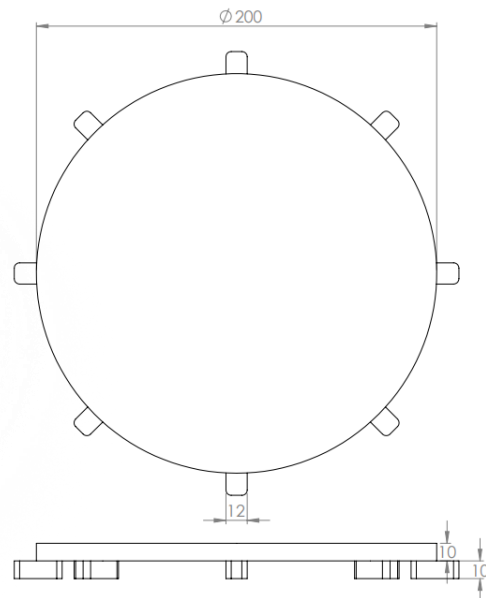


Industrial Annular Channel Grating is typically supplied as part of the accompanying KV215 Family of Square Top Drain Gullies

Product code	Bar	Depth	Square	Load Class
KANG207 SQ	15	25	207	C/D/E

Specify: Kent Industrial Annular Channel Grating KANG207; 207mm wide grating; 207mm long; Grade 304 Stainless Steel; Load Class D

(amend underlined words to suit project)



Industrial Annular Channel Grating is typically supplied with the KV250 Family of Round Top Drain Gullies

Product code	Bar	Depth	Diameter	Load Class
KANG250 RD	12	20	250	C/D/E

Specify: Kent Industrial Annular Channel Grating KANG250; 250mm diameter wide grating; Grade 304 Stainless Steel; Load Class D

(amend underlined words to suit project)

KENT STAINLESS “A PARTNER YOU CAN RELY ON”

Stainless Steel Maintenance.

Although corrosion resistant, Stainless Steel needs to be well looked after to have a long service life. Salt, Iron and Grit are the biggest contributors of rusting on stainless steel products.

Clean the stainless-steel components using warm water with a mild detergent with a non-abrasive cloth or sponge. Heavier stains may require the use of a nylon scouring pad or a stainless-steel cleaner.

To remove paint or graffiti (or light concrete splashes) use a cloth and alkaline or solvent paint strippers according to type of paint. For Satin Finish Stainless try to follow the direction of the grain when cleaning vigorously or polishing. For Bead Blasted Finish use a circular motion. Rust spots or 'tea stains' can occur on the surface of the material, these are normally caused by contamination from ordinary mild steel, particularly in areas where construction work has been undertaken.

Where contamination of the stainless has occurred from ordinary mild steel coming into contact with the stainless, use Rust Remover 410. In cases where the surface is severely stained as a result of severe environmental conditions or scratched due to misuse, it may still be possible to restore the original finish using chemicals such as Oxalic Acid solution.

At specification/design stage we always recommend a polish that uses electropolishing – eg. Cold Rolled Electropolished or Bright Satin. These polishes combined with using grade 316L stainless will give your stainless project the best chance of an enduring pristine finish. Cleaning as described above once or twice per annum is sufficient in almost all locations. Proximity to salt water or a dry environment where rainwater cannot reach some stainless parts may need more frequent cleaning.

Contact us

Phone: +353 53 914 3216
UK Freephone: 0800 376 8377
USA: 781 374 7391



Email: info@kentstainless.com
Address: Ardavan, Wexford, Ireland, Y35 CRW2