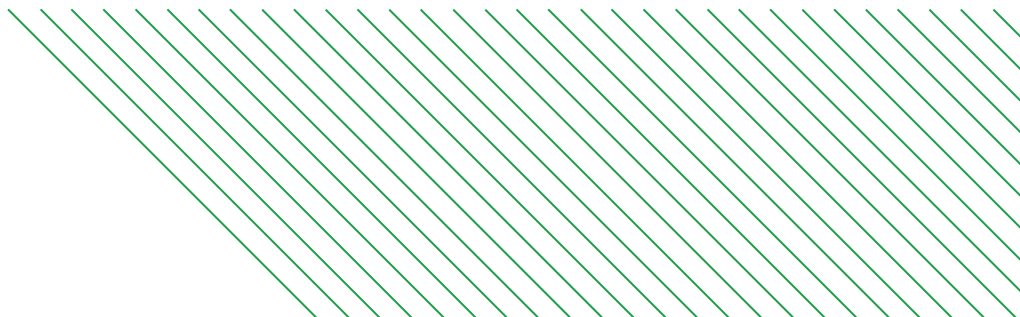


Kent
STAINLESS

Kent Anti-Slip Mesh Grating



Drains

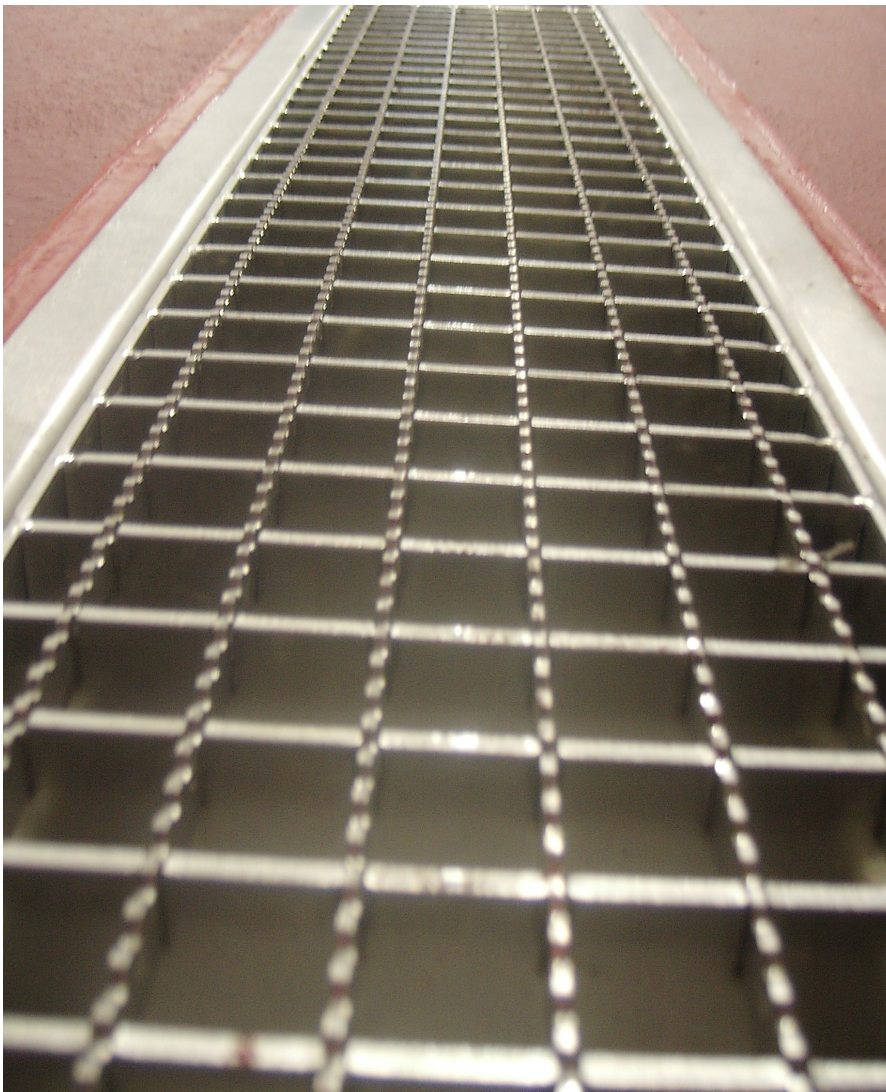
Drain Gratings: KAMG150-KAMG207-KAMG250

DESCRIPTION

Kent Anti Slip Mesh grating is used with KSBC range of drainage channels or the KAF angle frame range. It is available ex stock normally in 150mm and 200mm widths, 25mm deep with 2mm thick load bars. For heavier duty areas the load bar thickness is increased to 3mm bars with 30mm or 40mm depth. It has a 20mm spacing between bars which gives this grating a large free area. It is therefore ideal for factories with pedestrian or medium duty traffic, with frequent, high intensity wash down. Lockdown version is optional. It is very regularly specified for Meat, Dairy, Beverage, Pharmaceutical factories. We recommend this for areas which predominantly have pedestrian traffic and no forklift or heavy rubber wheel traffic that would turn at this point and twist the gratings sideways.

FEATURES:

- Single & Double Anti slip available
- Pedestrian traffic areas
- Large free area for high flow rate areas.
- Lockdown option available



BS EN1253 Loading Class L15 / R50 / M125

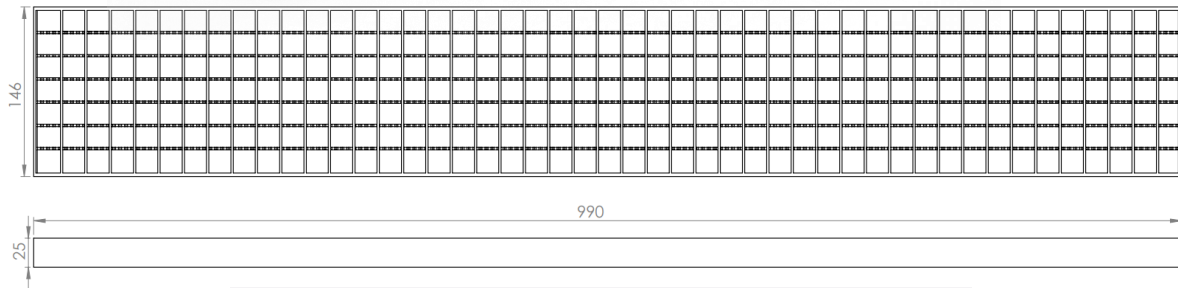
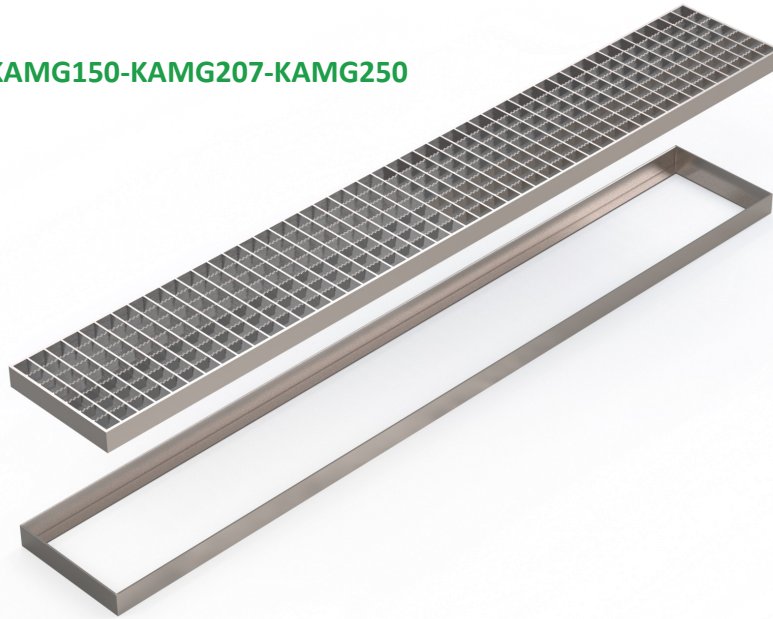
Our internal factory gratings can be subjected to very heavy loads and the grating depth and bar thickness will be determined by Kent to suit your project.

This Antislip Mesh Grating suits Light to Medium Class Loading - and should not be installed where pneumatic tyres are turning.

Suitable for Factories—Meat / Dairy / Food / Drinks

Drains

Drain Gratings: KAMG150-KAMG207-KAMG250



Anti-slip Mesh Grating typically supplied on its own or can be specified with an accompanying angle frame (KAF150)

Product code	Bar	Gap	Depth	Lengths	Load Class
KAMG 150	2/3mm	20mm	25-50mm	500-1000mm	B/C/D



Specify: Kent Anti-slip Mesh Grating KAMG150; 150mm wide grating; 990mm long; Grade 304 Stainless Steel; Load Class B

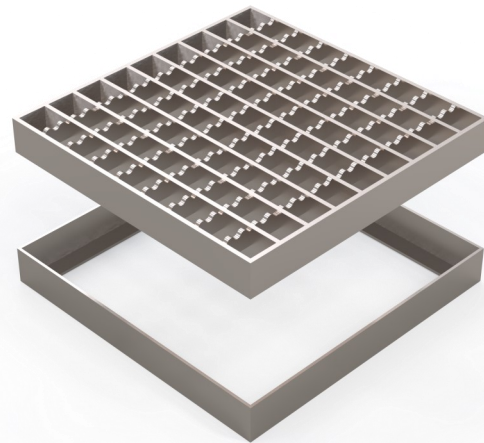
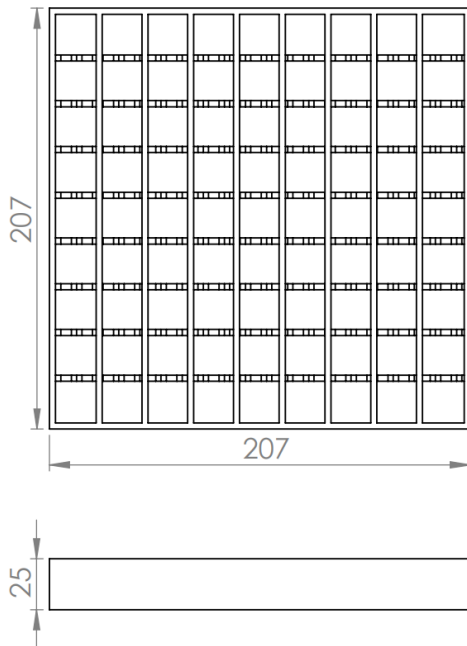
or

Specify: KAF150 Angle Frame with Kent Anti-slip Mesh Grating KAMG150; 150mm wide ; 1000mm long; Grade 304 Stainless Steel; Load Class B

(amend underlined words to suit project)

Drains

Drain Gratings: KAMG150-KAMG207-KAMG250



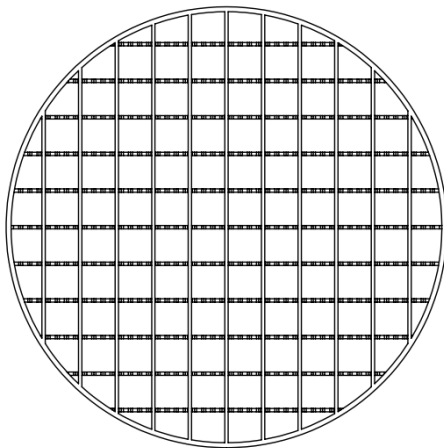
Anti-slip Mesh Grating typically supplied on its own or can be specified with an accompanying angle frame (KAF215), or the KV215 Family of Square Top Drain Gullies

Product code	Bar	Gap	Depth	Square	Load Class
KAMG207 SQ	2/3mm	20mm	25-50mm	215/215	B/C/D

Specify: Kent Anti-slip Mesh Grating KAMG207; 207mm wide grating; 207mm long; Grade 304 Stainless Steel; Load Class B

or

Specify: KAF215 Angle Frame with Kent Anti-slip Mesh Grating KAMG207; 207mm wide ; 215mm long; Grade 304 Stainless Steel; Load Class B



Anti-slip Mesh Grating typically supplied on its own or can be specified with the KV250 Family of Round Top Drain Gullies

Product code	Bar	Gap	Depth	Diameter	Load Class
KAMG250 RD	2/3mm	20mm	25-50mm	250	B/C/D

Specify: Kent Plain Mesh Grating KAMG250; 250mm diameter wide grating; Grade 304 Stainless Steel; Load Class B

Stainless Steel Maintenance.

Although corrosion resistant, Stainless Steel needs to be well looked after to have a long service life. Salt, Iron and Grit are the biggest contributors of rusting on stainless steel products.

Clean the stainless-steel components using warm water with a mild detergent with a non-abrasive cloth or sponge. Heavier stains may require the use of a nylon scouring pad or a stainless-steel cleaner.

To remove paint or graffiti (or light concrete splashes) use a cloth and alkaline or solvent paint strippers according to type of paint. For Satin Finish Stainless try to follow the direction of the grain when cleaning vigorously or polishing. For Bead Blasted Finish use a circular motion. Rust spots or 'tea stains' can occur on the surface of the material, these are normally caused by contamination from ordinary mild steel, particularly in areas where construction work has been undertaken.

Where contamination of the stainless has occurred from ordinary mild steel coming into contact with the stainless, use Rust Remover 410. In cases where the surface is severely stained as a result of severe environmental conditions or scratched due to misuse, it may still be possible to restore the original finish using chemicals such as Oxalic Acid solution.

At specification/design stage we always recommend a polish that uses electropolishing – eg. Cold Rolled Electropolished or Bright Satin. These polishes combined with using grade 316L stainless will give your stainless project the best chance of an enduring pristine finish. Cleaning as described above once or twice per annum is sufficient in almost all locations. Proximity to salt water or a dry environment where rainwater cannot reach some stainless parts may need more frequent cleaning.

KENT STAINLESS
“A PARTNER YOU CAN RELY ON”



Contact us

Phone: +353 53 914 3216

UK Freephone: 0800 376 8377

USA: 781 374 7391

Email: info@kentstainless.com

Address: Ardavan, Wexford, Ireland, Y35 CRW2

