



**Kent**  
STAINLESS

## Factory Slotted Grating



## Drains

Drain Gratings: KFSG150-KFSG207-KFSG250

### DESCRIPTION

Kent Industrial Factory Slotted Grating – KFSG, is normally used to suit the KSBC (Kent Standard Box Channel) range of drainage channels or the KAF Angle Frame and most Kent Industrial Gullies. The KV215 Gullies are most popular.

The most common size for KLG is either 150mm and 200mm widths. As standard slots are 12mm wide but heelproof versions are available as a separate product and for areas that require foot traffic and the grating can be 3mm thick.

It is more common in areas which require a heavier duty grating, it is regularly supplied as 10mm thick with 15mm risers to sit into a 25mm deep recess—but this can be customised to 40mm or 40mm deep on request.

It is therefore ideal for factories with pedestrian or heavy forklift traffic. They are generally sold unlocked. This type of grating is very regularly specified for Pharmaceutical factories covering a trench drain that contains pop up sealed outlets.

**Customisable: Stainless Grade, Width, Length and Loading.**

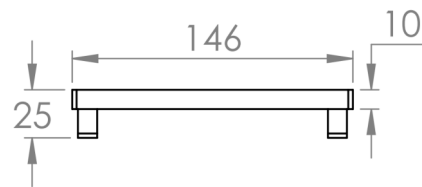
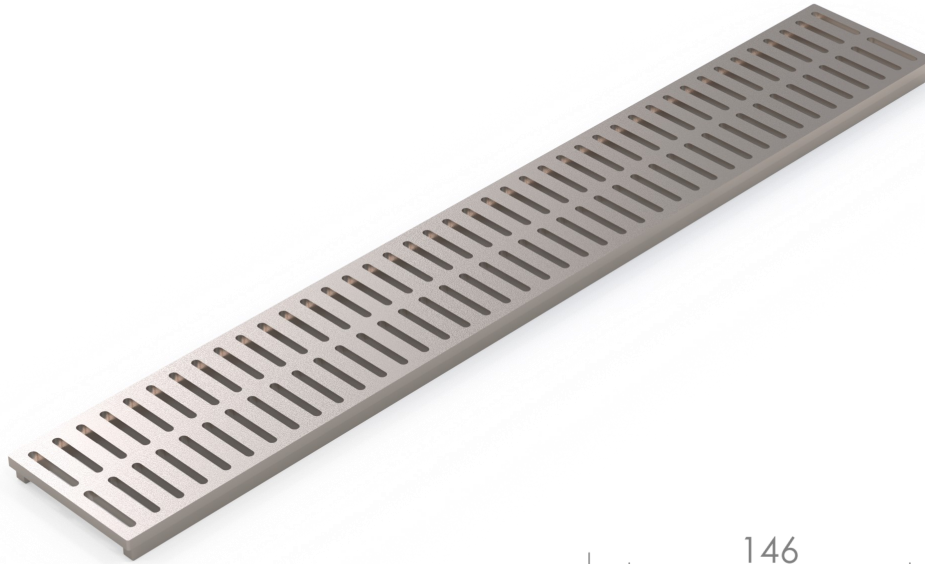
### RECOMMENDED FOR:

- White welly traffic
- Up to Load Class D
- Pallet trucks



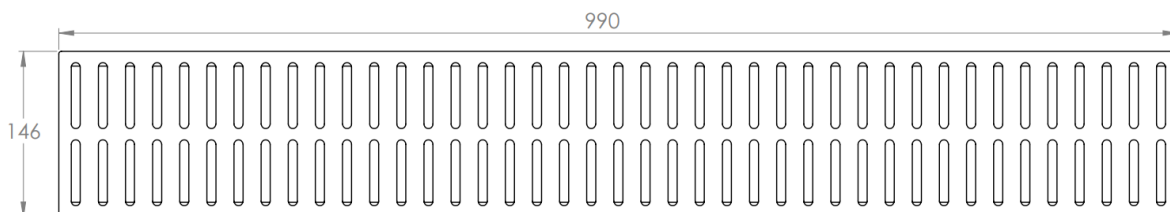
# Drains

Drain Gratings: KFSG150-KFSG207-KFSG250



Factory Slotted Channel Grating typically supplied to accompany the KSBC150 Standard Box Channel and often with the KSBC450 Channel covering Pop Up Sealed Outlets

Product code	Depth	Lengths	Load Class
KFSG 150	25	990	

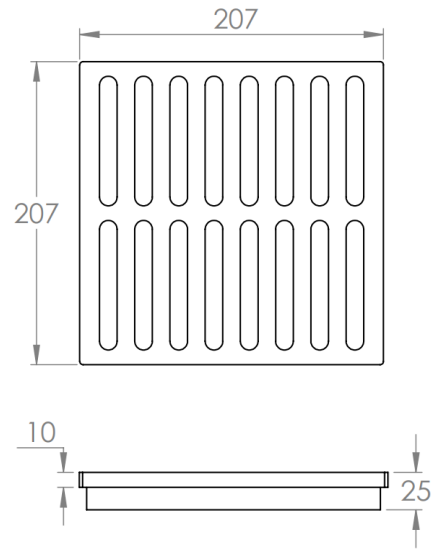
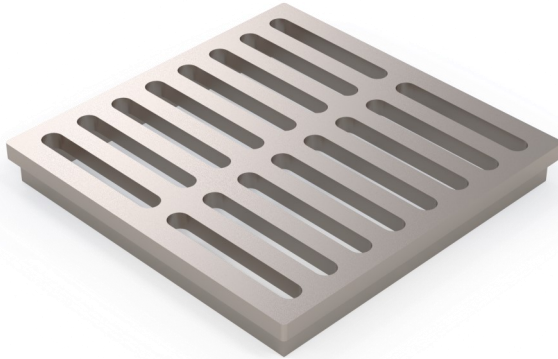


Specify: Kent Factory Slotted Channel Grating KFSG150; 150mm wide grating; 990mm long; Grade 304 Stainless Steel; Load Class D

(amend underlined words to suit project)

# Drains

## Drain Gratings: KFSG150-KFSG207-KFSG250

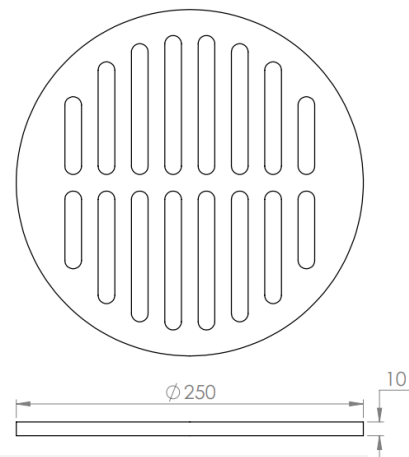


Factory Slotted Grating typically supplied with the KV215 Family of Square Top Drain Gullies

Product code	Depth	Square	Load Class
KFSG207 SQ	25	207	B/C/D

Specify: Kent Factory Slotted Grating KFSG207; 207mm wide grating; 207mm long; Grade 304 Stainless Steel; Load Class B

(amend underlined words to suit project)



Factory Slotted Grating typically supplied on its own or can be specified with the KV250 Family of Round Top Drain Gullies

Product code	Depth	Diameter	Load Class
KFSG250 RD	10	250	B/C/D

Specify: Kent Factory Slotted Grating KFSG250; 250mm diameter wide grating; Grade 304 Stainless Steel; Load Class B

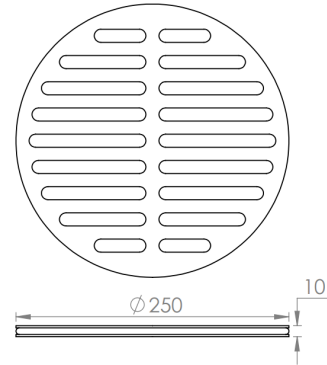
(amend underlined words to suit project)

## Drains

### Drain Gratings: KFSG150-KFSG207-KFSG250



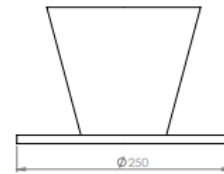
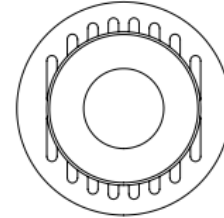
'O' Ring



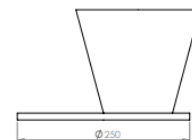
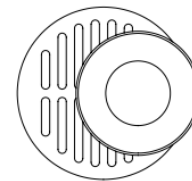
Optionally the circular Factory Slotted Grating can be specified with a viton seal in a machined groove in the vertical wall to secure it tightly to the KVCR range of gullies. Specify 'with Viton 'O' Ring'



Specify 'with centrally located Tundish'



Specify 'with offset Tundish'



Optionally the circular Factory Slotted Grating can be specified with a funnel or tundish allowing water ingress at ground level and pipe discharge form above. This can be centrally located or offset and fits the KVCR range of gullies.

Specify: Kent Factory Slotted Grating KFSG250; 250mm diameter wide grating; Grade 304 Stainless Steel; Load Class B; with offset Tundish

KENT STAINLESS “A PARTNER YOU CAN RELY ON”

## Stainless Steel Maintenance.

Although corrosion resistant, Stainless Steel needs to be well looked after to have a long service life. Salt, Iron and Grit are the biggest contributors of rusting on stainless steel products.

Clean the stainless-steel components using warm water with a mild detergent with a non-abrasive cloth or sponge. Heavier stains may require the use of a nylon scouring pad or a stainless-steel cleaner.

To remove paint or graffiti (or light concrete splashes) use a cloth and alkaline or solvent paint strippers according to type of paint. For Satin Finish Stainless try to follow the direction of the grain when cleaning vigorously or polishing. For Bead Blasted Finish use a circular motion. Rust spots or 'tea stains' can occur on the surface of the material, these are normally caused by contamination from ordinary mild steel, particularly in areas where construction work has been undertaken.

Where contamination of the stainless has occurred from ordinary mild steel coming into contact with the stainless, use Rust Remover 410. In cases where the surface is severely stained as a result of severe environmental conditions or scratched due to misuse, it may still be possible to restore the original finish using chemicals such as Oxalic Acid solution.

At specification/design stage we always recommend a polish that uses electropolishing – eg. Cold Rolled Electropolished or Bright Satin. These polishes combined with using grade 316L stainless will give your stainless project the best chance of an enduring pristine finish. Cleaning as described above once or twice per annum is sufficient in almost all locations. Proximity to salt water or a dry environment where rainwater cannot reach some stainless parts may need more frequent cleaning.

### Contact us

Phone: +353 53 914 3216  
UK Freephone: 0800 376 8377  
USA: 781 374 7391

Email: [info@kentstainless.com](mailto:info@kentstainless.com)  
Address: Ardavan, Wexford, Ireland, Y35 CRW2

