

Kent Pedestrian Heelmesh Grating



Kent
STAINLESS



KENT PEDESTRIAN HEELMESH GRATING—KPHMG125

Kent
STAINLESS

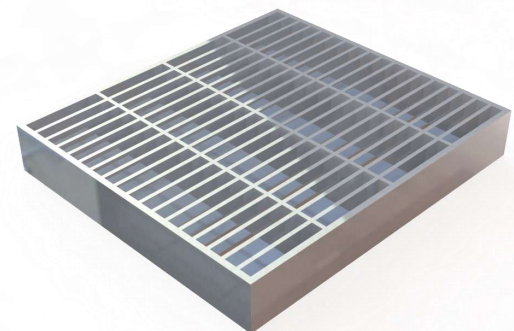
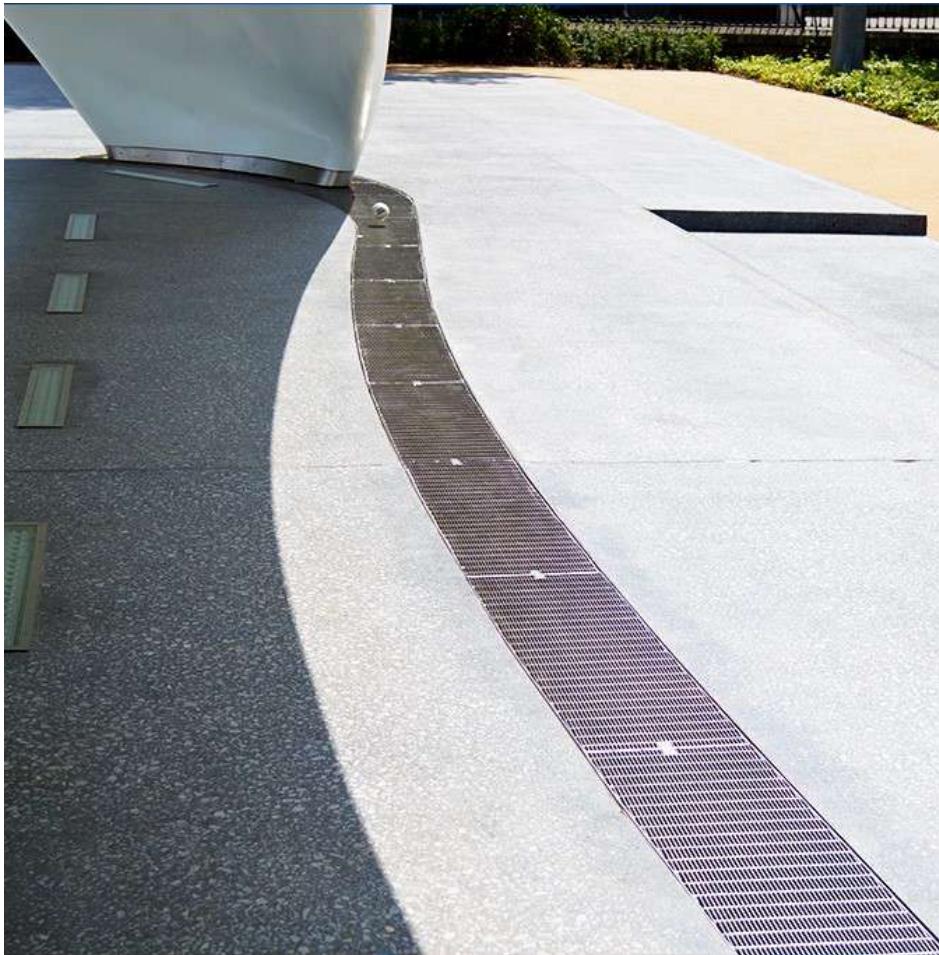
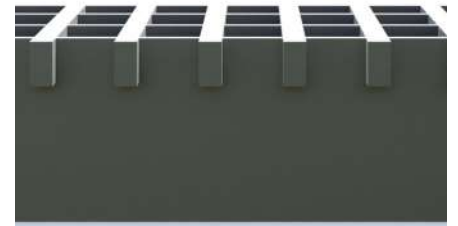
Kent Pedestrian Heel Mesh Grating is made from 2mm or 3mm thick bars at 6mm and 44mm centres on load and transverse bars respectively.

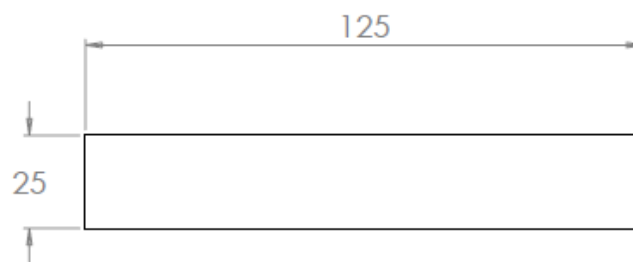
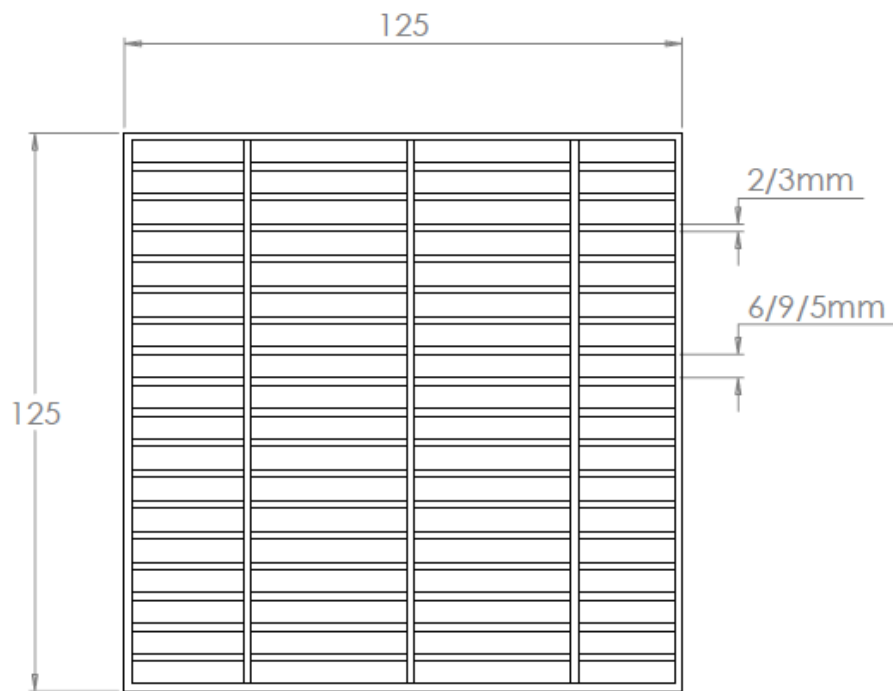
It is 25mm deep, and has a 6mm gap. Higher free area and lower cost can be achieved by using 2mm bars at 11mm centres giving a 9mm gap. They are a cost effective alternative to Wedge type Heelmesh.

They are suitable for all Kent KSBC channels and are best suited to pedestrian areas, barefoot areas and the 3mm version for areas up to 1 ton load.

Features:

- 2/3mm bar and 6mm gap
- Can be used for channels, gullies or Ventilation Grilles
- Grade 316 Stainless steel as Standard
- Satin Finish 320 Grit Polish
- 2nd lockdown points per 1000mm section.





Product Dimensions:

Reference	Depth	Bar	Gap	Free Area
Kent Pedestrian Heelmesh Grating (KPHMG125)	25	2	9	78%
Kent Pedestrian Heelmesh Grating (KPHMG125)	25	2	6	67%
Kent Pedestrian Heelmesh Grating(KPHMG125)	25	3	5	59%
Kent Pedestrian Heelmesh Grating(KPHMG125)	25	5	5	40%

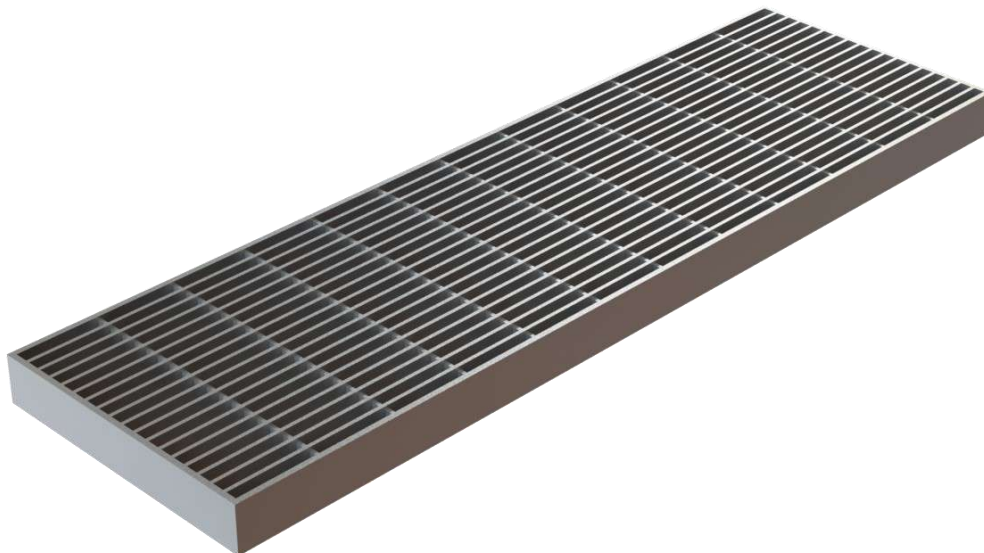


*Choose your Stainless Grade:
Grade 304 Stainless steel
Grade 316 Stainless steel*

*Customise your size to
suit your channel, or
gullies*

Kent Pedestrian Heel Mesh Grating KPHMG125; 150mm wide x 1000mm long x 25mm deep; Grade 304L Stainless Steel; Load Class A. With Satin Finish 320 Grit Polish.

*Choose your finish:
Satin Finish,
Satin 320 Grit Polish,
Bead Blasted,
Powder Coated*



Maintenance

Clean the stainless steel components using warm water with a mild detergent with a non-abrasive cloth or sponge. Heavier stains may require the use of a nylon-scouring pad or a stainless steel cleaner.

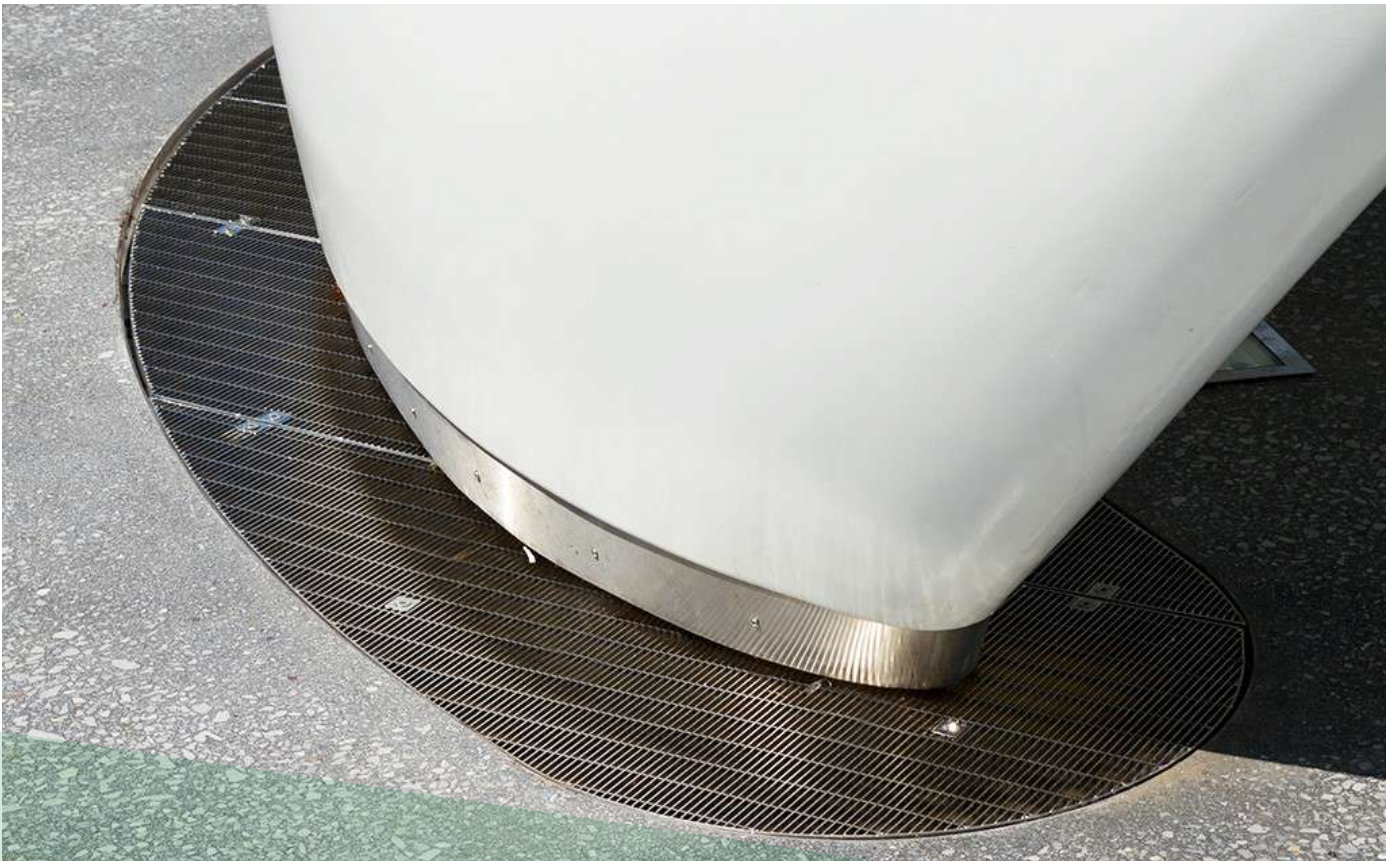
To remove paint or graffiti use a cloth and Alkaline or solvent paint strippers according to type of paint. In the case of a bead blasted finish, where abrasive cleaning is required, always use a random circular rubbing action with a cloth.

In the case of brushed finishes the surface consists of uniform fine 'scratches' running in one direction so where abrasive cleaning is required always use a straight back and forward rubbing action in the direction of the grain using soap and warm water.

Rust spots or 'tea stains' can occur on the surface of the material, these are normally caused by contamination from ordinary mild steel, particularly in areas where construction work has been undertaken. Such stains can be removed using Rust Remover 410.

In cases where the surface is severely stained because of severe environmental conditions or scratched due to misuse, it may still be possible to restore the original finish using chemicals such as Oxalic Acid solution. There are many stainless steel polishes available to enhance the surface finish.

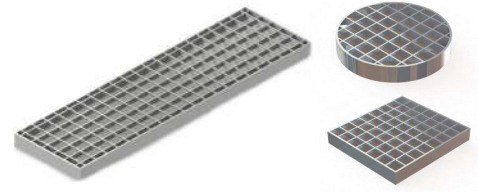
We recommend Mister Stainless Ltd. as a provider for stainless steel cleaning products.



Plain Mesh Grating



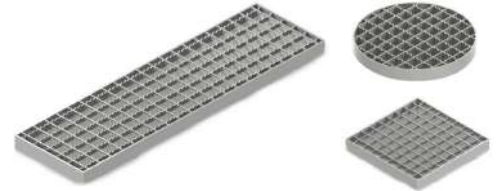
- Load Class A • Large free area
- Load Class B • High flow rate application
- Medium to heavy duty traffic



Anti-slip Mesh Grating



- Load Class A • Large free area
- Load Class B • High flow rate application
- Medium duty traffic
- Slip resistant



Heel Mesh Grating



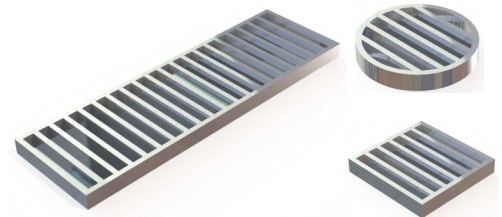
- Load Class A • 6mm Aperture
- Load Class B • Low to Medium flow rate applications
- Load Class C • Low to Medium duty traffic



Ladder Grating



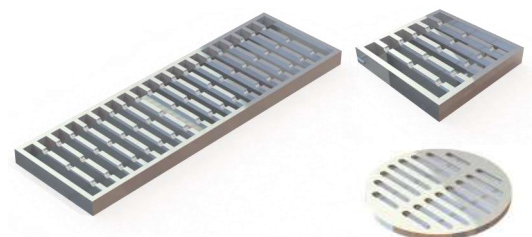
- Load Class B • Large free area
- Load Class C • High flow rate application
- Medium to very heavy duty traffic



Anti-Slip Ladder Grating



- Load Class B • Large free area
- Load Class C • High flow rate application
- Medium to very heavy duty traffic



Slotted Grating



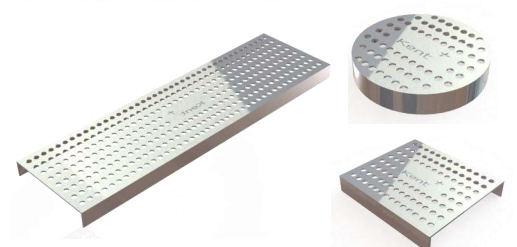
- Load Class A • Slots can be made from 6mm to 20mm to suit high heel or high flow traffic
- Load Class B • Light to very heavy traffic
- Load Class C • Laser cut slots can include logo/ wording for projects



Perforated Grating



- Load Class A • 8mm perforations
- Load Class B • Barefoot to heavy duty traffic
- Load Class C • Laser cut perforations can be designed into logo/ symbol/ wording





Kent Stainless Ltd
Ardcavan, Wexford, Ireland

TEL NO: +353 53 9143216
UK FREEPHONE: 0800 376 8377
FAX: +353 53 9141802
WEB: www.kentstainless.com
EMAIL: info@kentstainless.com

