



Kent
STAINLESS

Square Perforated Grating



Drains

Drain Gratings: KSPG150-KSPG207-KSPG250

DESCRIPTION

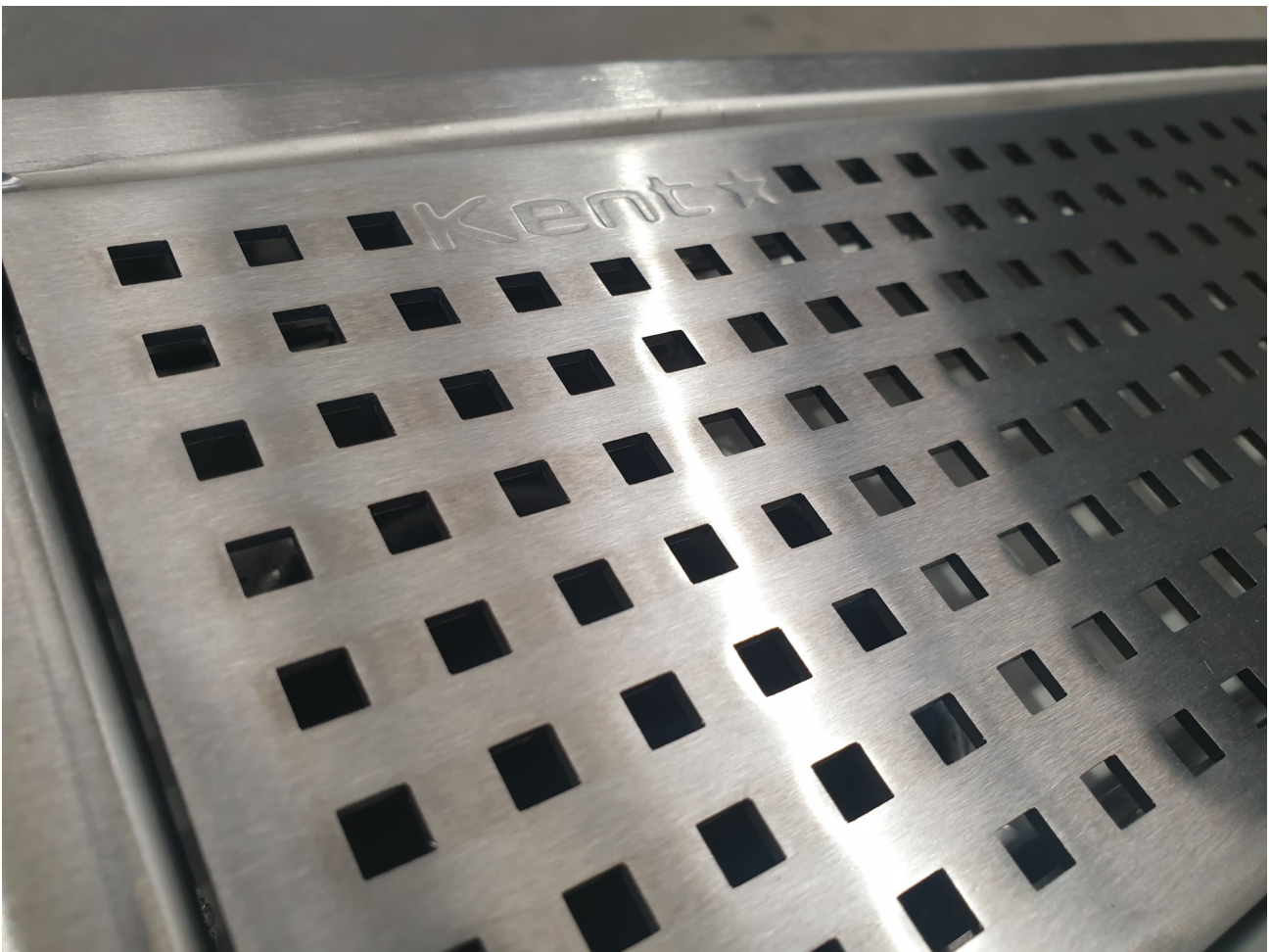
The Kent Square Perforated Channel Grating is laser cut perforated grating with square perforations normally used to suit the KSBC range of drainage channels.

It is available ex stock normally in 150mm and 200mm widths. A 3mm perforated sheet is turned down 25mm on either side for Pedestrian and Barefoot areas. In areas which require a heavier duty grating, it is regularly ordered as 10mm thick steel plate which is laser cut, with no turndown. A riser can be tacked below to fit onto 25mm deep Angle Frame.

A lockdown version is optional. It is very regularly specified for Walkways or for barefoot areas in Swimming Pool Change rooms or

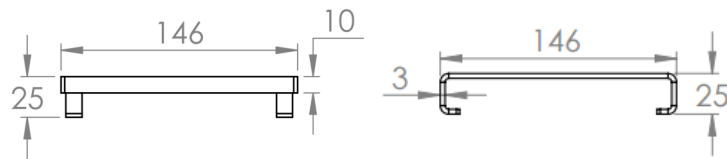
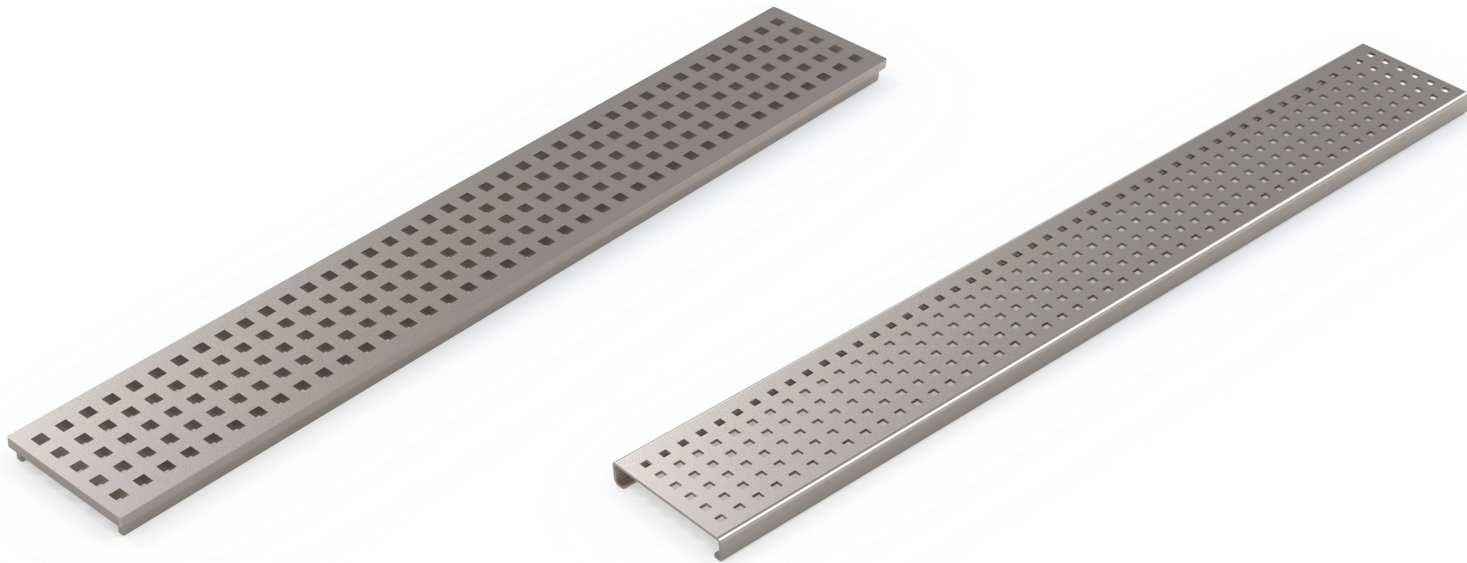
FEATURES:

- 3mm sheet laser cut with circular perforations
- Grade 304 Stainless steel as Standard
- Grade 316 for chlorinated areas
- Satin Finish 320 Grit Polish
- Lock down version available on request.



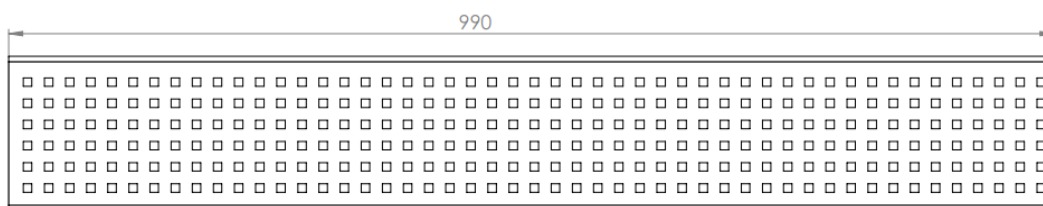
Drains

Drain Gratings: KSPG150-KSPG207-KSPG250



Round Perforated Channel Grating typically supplied to accompany the KSBC150 Standard Box Channel Range

Product code	Depth	Lengths	Load Class
KSPG 150	25	990	A/B/C/D

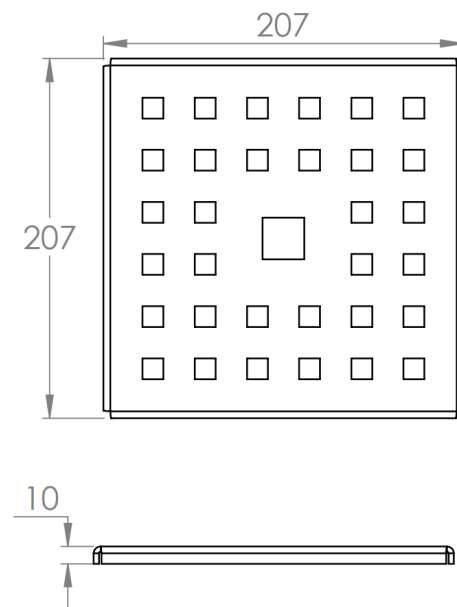
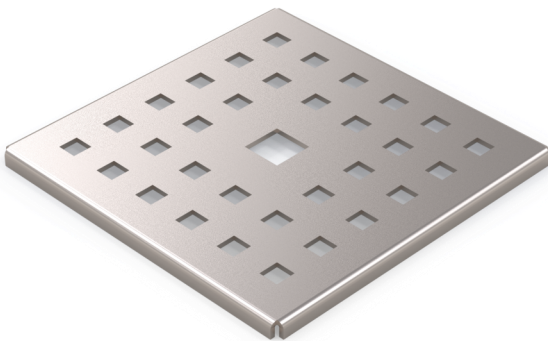
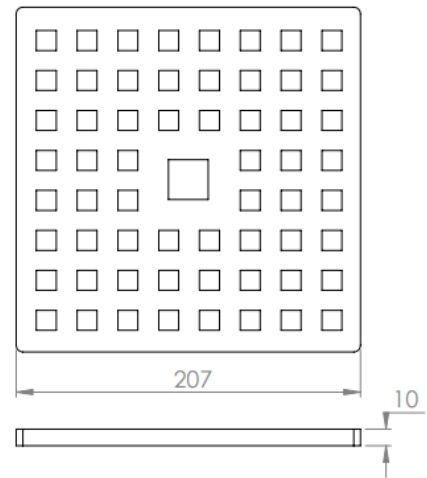
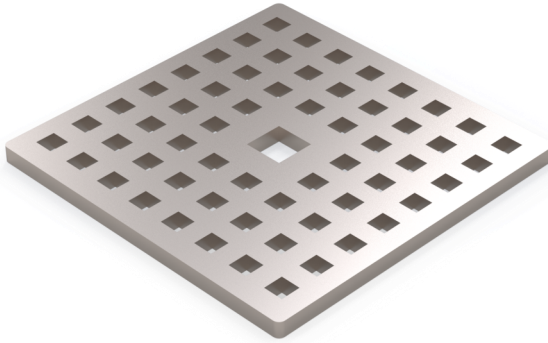


Specify: Kent Square Perforated Channel Grating KSPG150; 150mm wide grating; 990mm long; Grade 304 Stainless Steel; Load Class A

(amend underlined words to suit project)

Drains

Drain Gratings: KSPG150-KSPG207-KSPG250



Square Perforations Grating typically supplied with the KV215 Family of Square Top Drain Gullies

Product code	Depth	Square	Load Class
KSPG207 SQ	10	207	A/B/C/D

Specify: Kent Square Perforated Grating KSPG207; 207mm wide grating; 207mm long; Grade 304 Stainless Steel; Load Class A

KENT STAINLESS “A PARTNER YOU CAN RELY ON”

Stainless Steel Maintenance.

Although corrosion resistant, Stainless Steel needs to be well looked after to have a long service life. Salt, Iron and Grit are the biggest contributors of rusting on stainless steel products.

Clean the stainless-steel components using warm water with a mild detergent with a non-abrasive cloth or sponge. Heavier stains may require the use of a nylon scouring pad or a stainless-steel cleaner.

To remove paint or graffiti (or light concrete splashes) use a cloth and alkaline or solvent paint strippers according to type of paint. For Satin Finish Stainless try to follow the direction of the grain when cleaning vigorously or polishing. For Bead Blasted Finish use a circular motion. Rust spots or 'tea stains' can occur on the surface of the material, these are normally caused by contamination from ordinary mild steel, particularly in areas where construction work has been undertaken.

Where contamination of the stainless has occurred from ordinary mild steel coming into contact with the stainless, use Rust Remover 410. In cases where the surface is severely stained as a result of severe environmental conditions or scratched due to misuse, it may still be possible to restore the original finish using chemicals such as Oxalic Acid solution.

At specification/design stage we always recommend a polish that uses electropolishing – eg. Cold Rolled Electropolished or Bright Satin. These polishes combined with using grade 316L stainless will give your stainless project the best chance of an enduring pristine finish. Cleaning as described above once or twice per annum is sufficient in almost all locations. Proximity to salt water or a dry environment where rainwater cannot reach some stainless parts may need more frequent cleaning.

Contact us

Phone: +353 53 914 3216
UK Freephone: 0800 376 8377
USA: 781 374 7391



Email: info@kentstainless.com
Address: Ardavan, Wexford, Ireland, Y35 CRW2