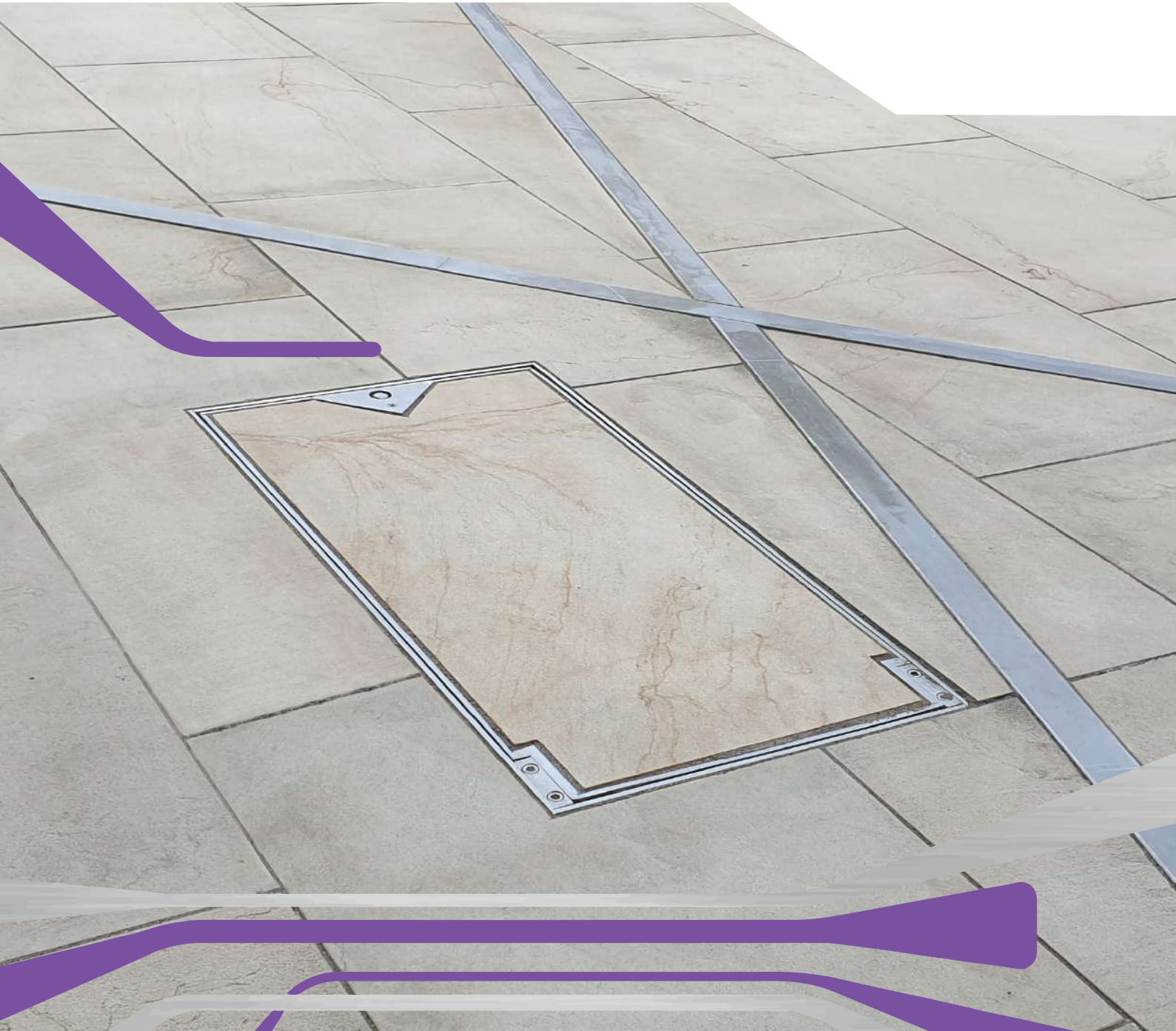


TW HLA ACCESS COVER

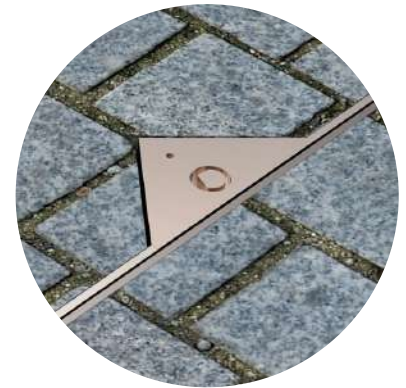


The Kent TW HLA Recessed Access Covers are a single tray hinged lift assisted recessed access cover. These covers can be opened and closed easily by a single operator making them ideal maintenance covers.

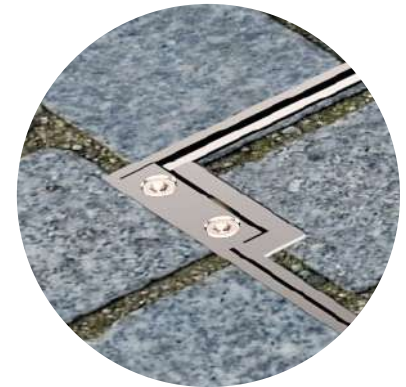
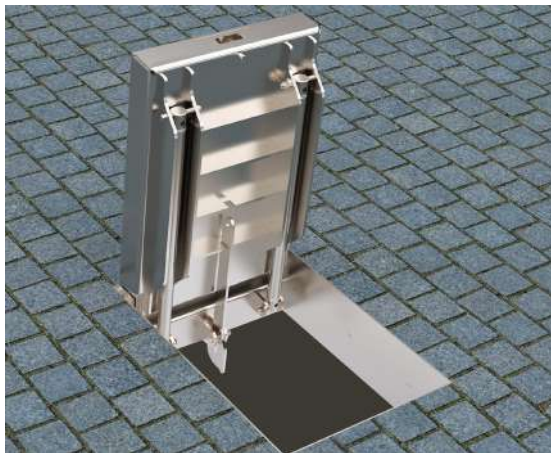
The covers have a robust stainless steel hinge and have keying in mesh to allow block adhesion with epoxy mortar. The Kent lift-assist mechanical struts to allow the covers to be opened with a force compliant with manual handling regulations.

Features

- 320 Grit polished top edge
- Mechanical lifting struts
- Grade 316L Stainless steel
- One person operation
- Robust Stainless steel hinge
- Open position stay



SECURITY FIXING

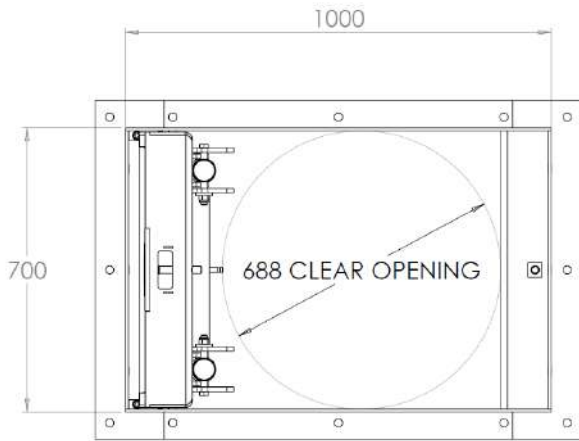


ROBUST STAINLESS STEEL HINGE

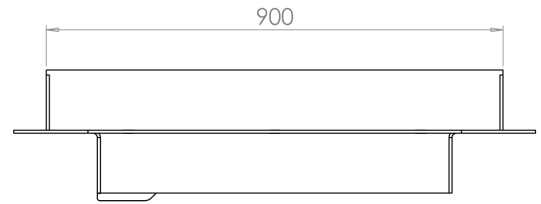


MECHANICAL LIFTING STRUTS

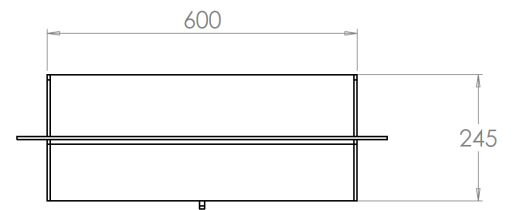




TOP VIEW (OPEN)

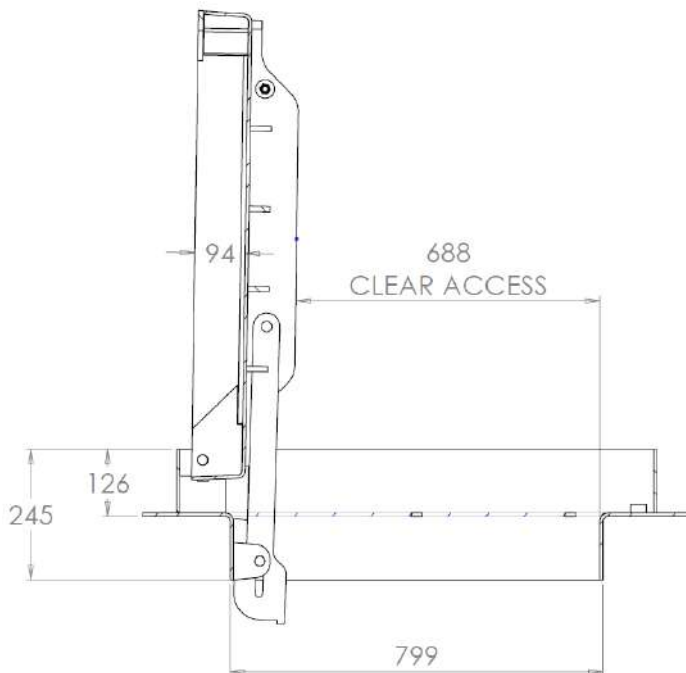


SIDE VIEW (CLOSED)

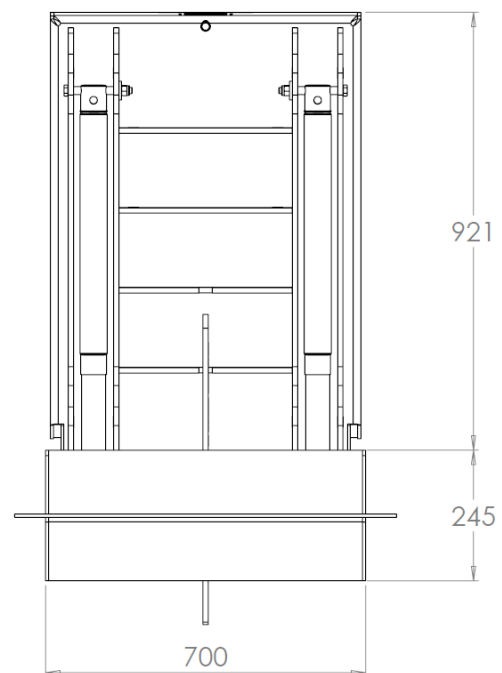


FRONT VIEW (CLOSED)

Product Code	Width (Visible Frame)	Length (Visible Frame)	Depth
KTWHLA600	600mm	900mm	245mm



SIDE VIEW (OPEN)



FRONT VIEW (OPEN)

Recessed v Solid Top Access Covers

Recessed Access Covers - Hinged Lift Assisted

These access covers are commonly found in public realm areas around towns and cities and in main streets, national monuments... etc. The recessed tray allows them to blend into the paving scheme keeping the pattern intact.

The stainless steel frame can be tagged so maintenance workers can find and open the correct access cover. The hinged lift assisted feature also allows for a person operation.

Solid-top Cast Ductile Iron Covers

These covers are functional, reliable and easy for maintenance workers to spot. However, they tend to break up paving schemes and can leave a beautiful public realm area looking untidy in comparison to what it could have been.

See below examples of both a scheme that used recessed access covers and cast ductile iron covers...

This project used Kent hinged lift assisted access covers, which kept the paving scheme intact and gave the area a better overall look



As shown this project used cast ductile iron access covers leaving the area with broken paving patterns in comparison to the above example.



Wastewater Code for Adoptions

Sewers for Adoption – April 2020

This product is approved under the Code for Newly Built Assets Offered for Adoption.

Double tray units were made in the trial period and the photos show double tray units, but a single tray unit was approved at the end of the trial period. The trial was done in the Thames Water region, hence the name of the Kent Stainless product – but the design applies to all water utilities in England and Wales initially.



More information relating to Asset Adoption for Water Services can be found here <https://www.water.org.uk/technical-guidance/developers-services/water-asset-adoption/>



More information relating to Asset Adoption for Sewerage Services can be found here <https://www.water.org.uk/technical-guidance/developers-services/codes-programme-sewerage-asset-adoption/>



To Specify This Product

To Specify our product in you project take the below specification clause and tailor it to suit your requirements.

NBS Specification



This product is associated with the following NBS Create clause:
45-45-00/320 Raised Access Floor Panels

NBS Specification



This product is associated with the following NBS clauses:
P31 Holes, chases, covers and supports for services
370 Access covers/grating for

R12 Below ground drainage systems
471 Access covers and frames

Kent TW Hinged Lift Assisted Recessed Access Cover

Manufacturer: Kent Stainless Ltd.

Web: www.kentstainless.com

Email: info@kentstainless.com

Tel: +44 (0) 800 376 8377/+353 (0) 53 914 3216

Fax: +353 53 914 1802

Address: Ardcavan Works, Ardcavan Co Wexford, Ireland

Product reference: Kent TW HLA Recessed Access Cover (KTWAC)

Material: Grade 304 Stainless steel/ Grade 316L Stainless steel

Material Finish: 320 Grit Polished



Choosing your Material

The last thing our we want for our customers is to have to deal with staining on their Kent Stainless Steel products. If your product will be exposed to harsh or coastal environments , we recommend upgrading to grade 316L stainless steel which extends the life span of the product for years more.

Grade 304 Stainless Steel

304 stainless steel is the most common form of stainless steel used around the world. It contains between 16 and 24 percent chromium and up to 35 percent nickel, as well as small amounts of carbon and manganese. 304 can withstand corrosion from most oxidizing acids. That durability makes 304 easy to sanitize, and therefore ideal for kitchen and food applications. It is also common in buildings, décor, and site furnishings. However, it is susceptible to corrosion from chloride solutions, or from saline environments like the coast.

Benefits

- Lowest Cost Corrosion resistant option
- Resistant to oxidation
- Low maintenance
- Durable and strong

Grade 316L Stainless Steel

316 grade is the second-most common form of stainless steel. It has almost the same physical and mechanical properties as 304 stainless steel and contains a similar material make-up. The key difference is that 316 stainless steel incorporates about 2 to 3 percent molybdenum. The addition increases corrosion resistance, particularly against chlorides and other industrial solvents. 316 stainless steel is commonly used in many industrial applications involving processing chemicals, as well as high-saline environments such as coastal regions and outdoor areas where de-icing salts are common. Due to its non-reactive qualities, 316 stainless steel is also used in the manufacture of medical surgical instruments.

Benefits

- Superior Corrosion resistance
- Chlorine Resistant
- Low maintenance
- Durable and strong

Cleaning and Maintenance

Stainless steel may be a low maintenance material, however it is not maintenance free. Long life aesthetic appearance can be achieved for external stainless steel products providing the appropriate grade of stainless is chosen and regular cleaning is undertaken.

How often?

For an area that receives regular rainfall that washes away the build-up of salt deposits, cleaning should be done once a year. If rainfall cannot get to certain areas, but still salt and pollution deposits can blow onto it.

Judge your cleaning regime by the nearby glass panels or window cleaning and clean the stainless as often as the glass nearby.

How do I do it?

For regular cleaning, and for a preventative regime, a simple wipe down by soft cloth or sponge with a mild detergent is enough (e.g. 5% diluted washing up liquid). Rinse off with deionised water. Rub dry with a clean dry cloth rather than letting the product drip dry

If staining does not disappear, switch the soft cloth to a pad of Scotchbrite™ from 3M™. Use the soapy water with Scotchbrite™ vigorously on areas that are unpolished or not architecturally important. For polished areas of products with a grain (e.g. Satin finish 320 grit polish), rub gently forwards and backwards only in the direction of the grain direction so proceed with caution if this is an architecturally important feature. Again – rinse with de-ionised water and dry with a soft cloth. For heavier staining or contamination by iron products Kent recommend Avesta cleaning chemicals. Cleaner Avesta 401™ can be used instead of the mild detergent as above. Avesta 420™ Fingerprint remover is a good cleaner to for areas prone to public fingerprints – it must be sprayed on and rubbed in while wet.

Pickling Gel Avesta 130™ (hazardous) and Passivator Avesta 630™ can be used for large, important features, but these should be discussed, and a method statement is available from Kent Stainless for their use. This work can be sub-contracted to Mister Stainless™ in Ireland and Edimex™ in Dubai.



Kent Stainless (Wexford) Ltd.

Ardcavan, Wexford, Y35 CRW2, Ireland

TEL: +353 53 914 3216

UK FREEPHONE: 0800 376 8377

FAX: +353 53 914 1802

WEB: www.kentstainless.com

EMAIL: info@kentstainless.com