

Stainless Steel Concentric Above Ground Hub Drain Grade 316

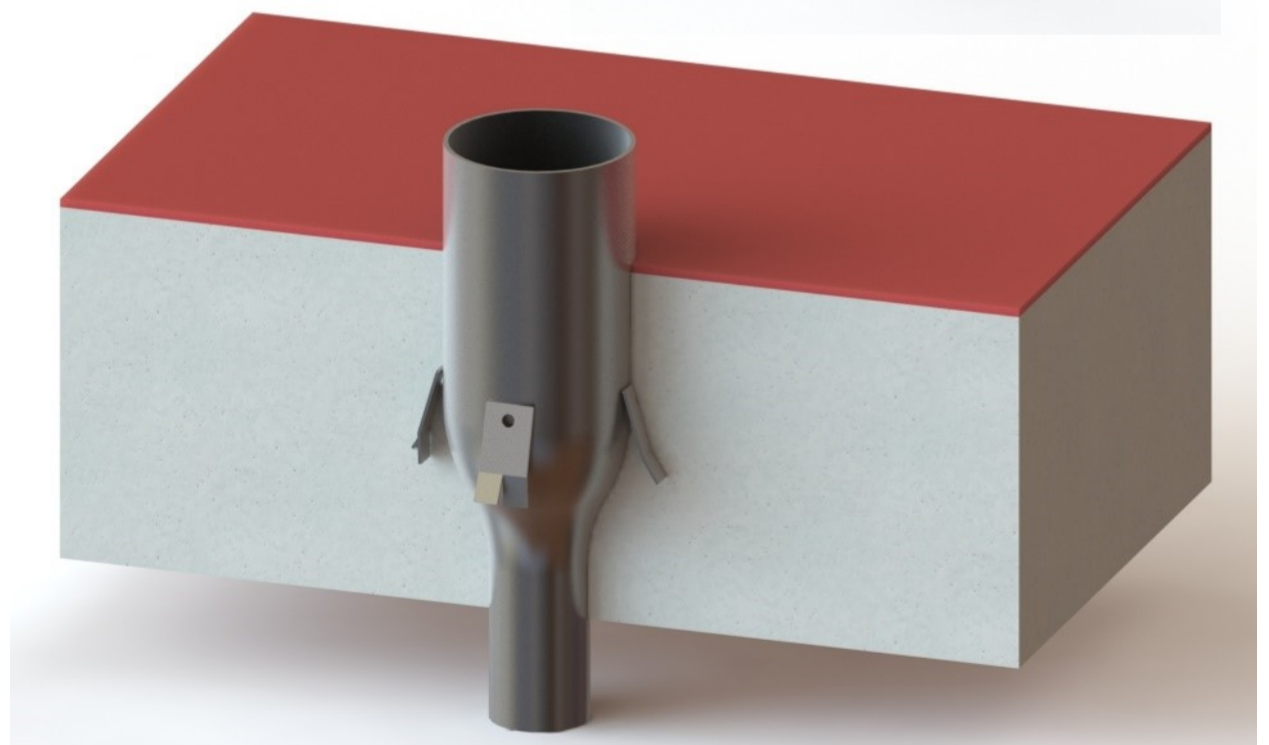
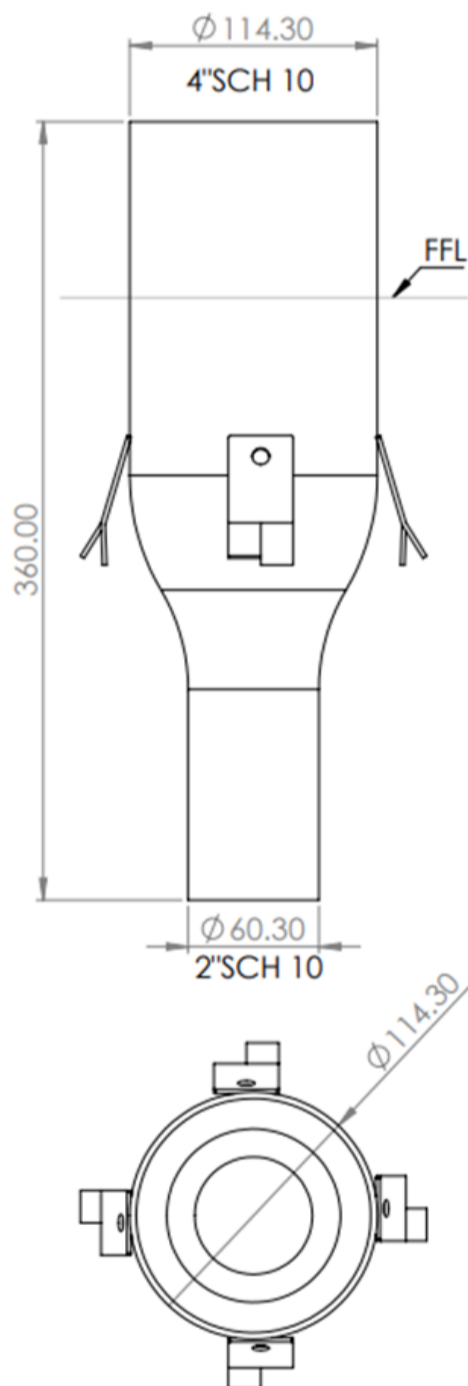
The KCHD4"/2" SCH10 is a Concentric Reducer type hub drain that is typically installed gomm (customisable) above Finished Ground Level. They are installed where pipes or hoses discharging into them need an atmospheric or air break.

Specify: Kent KCHD4"/2" Concentric Above Ground Hub Drain; Grade 316 stainless steel; to be installed gomm above FFL

(amend underlined words to suit project)

Features:

- Grade 304 (1.4301) or 316 (1.4401) Stainless Steel
- SCH10 pipe as standard
- Metric pipes available
- 2" - 12" variations available



Product Code	Height	Width	Depth	Outlet	Flow Rate*
KCHD4"/2"	360	4"	360	2" SCH10	2.8l/s
KCHD6"/4"	360	6"	360	4" SCH10	16.4l/s

