

Stainless Steel Concentric Above Ground Hub Drain Trapped Grade 316

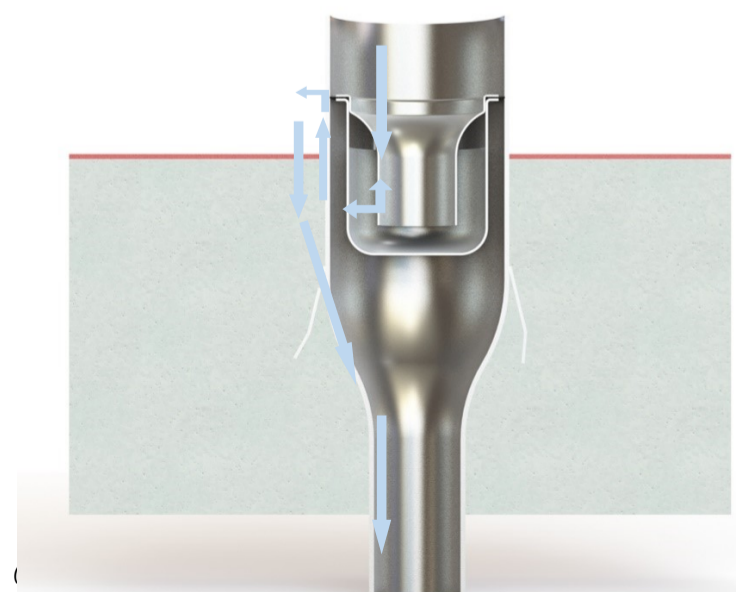
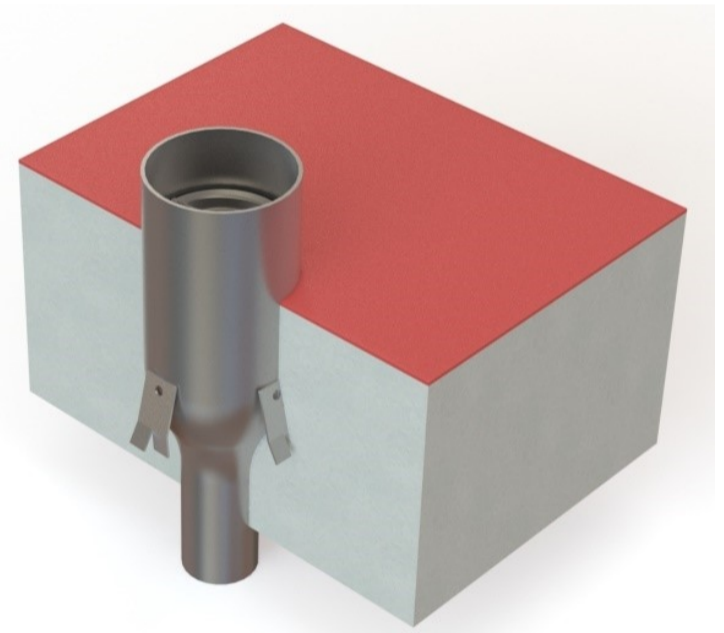
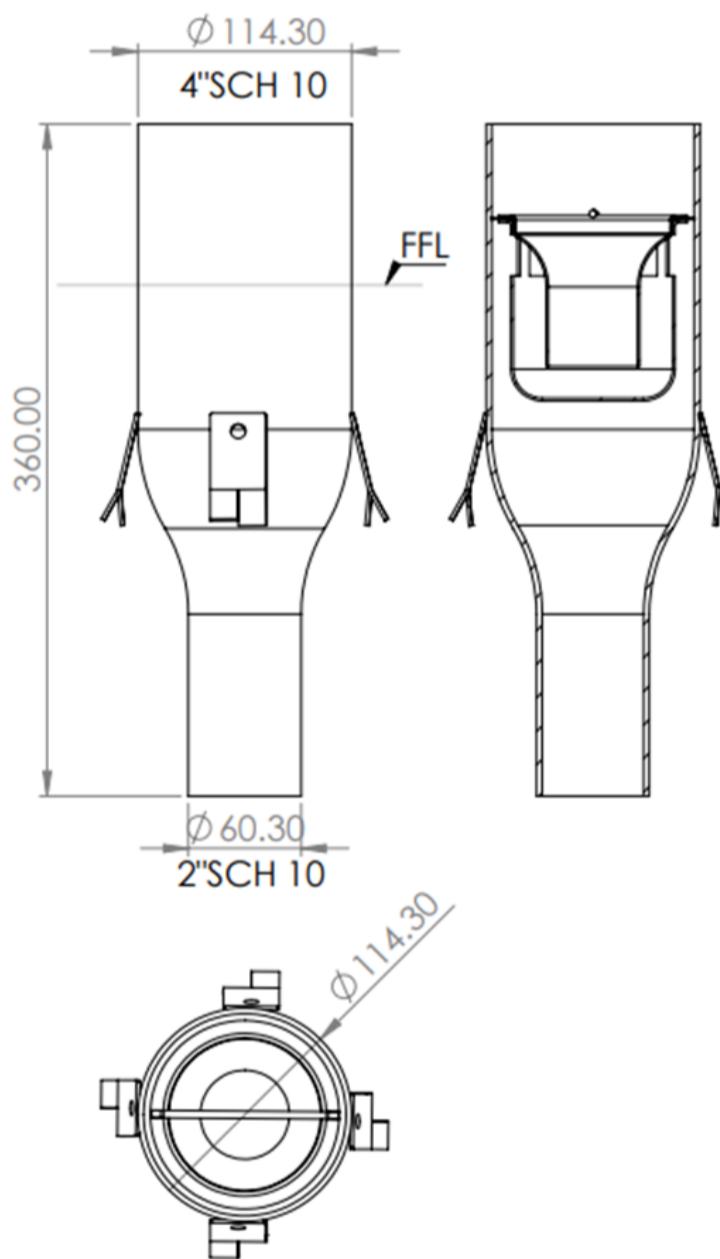
The KCHD4"/2"SCH10(T) is a Concentric Reducer type hub drain with an integral removable bottle trap that is typically installed 90mm (customisable) above Finished Ground Level. They are installed where pipes or hoses discharging into them need an atmospheric or air break.

Specify: Kent KCHD4"/2"(T) Concentric Above Ground Hub Drain; Grade 316 stainless steel; to be installed 90mm above FFL

(amend underlined words to suit project)

Features:

- Grade 304 (1.4301) or 316 (1.4401) Stainless Steel
- SCH10 pipe as standard
- Metric pipes available
- Trap only suits 4" tops—outlet can be 2" or 3"



Product Code	Height	Width	Depth	Outlet	Flow Rate*
KCHD4"/2"(T)	360	4"	360	2"SCH10	1.4l/s