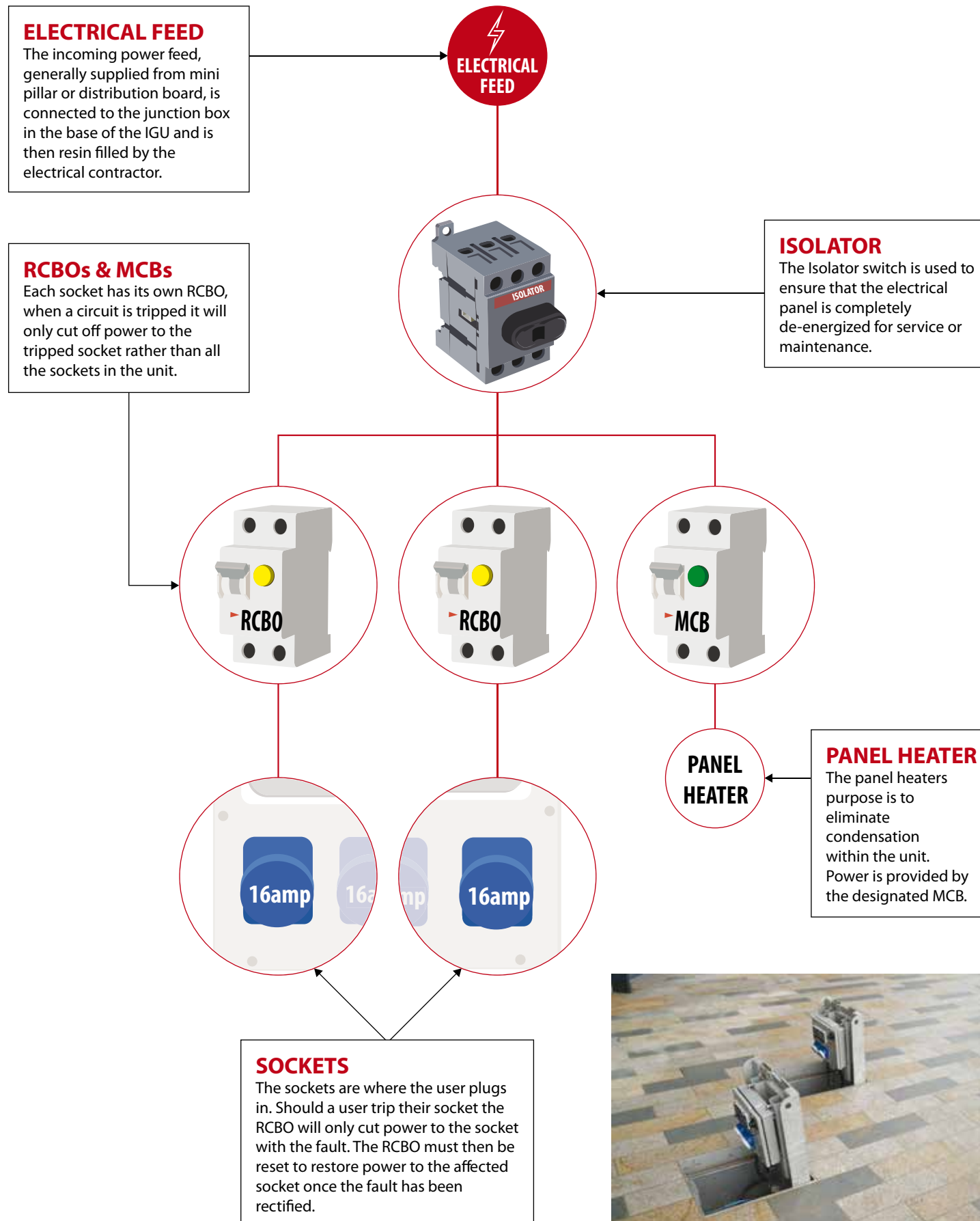


# IN GROUND UNITS



# IN GROUND POWER UNITS HOW THEY WORK

BELOW EXAMPLE - IGU EP004 ELECTRICAL PANEL



## Table of Contents

### 08-09

Kent Paver In Ground Power Unit  
KIGU-450/400 Type 1

### 10-11

Kent Paver In Ground Power Unit  
KIGU- 450/600 Type 2

### 12-13

Kent Paver In Ground Power Unit  
KIGU- 600/600 Type 3

### 14-15

Kent Paver In Ground Power Unit  
KIGU-780/600 Type 4

### 16-17

Kent Paver In Ground Power Unit  
KIGU-1200/1200 Type 5

### 18-19

Kent Paver Telescopic In Ground  
Power Unit KPTIGU-600/600 Type 6

### 20-21

Kent Tiler In Ground Power Unit  
KIU-440/550 Type 7

### 22-23

Kent Paver In Ground Power Unit  
KIGU550/600 Type 8 Broadcast Box

### 24-25

Kent Paver In Ground Potable  
Water Unit Type 9

### 26-27

Kent Paver In Ground  
Grey Water Unit Type 10

### 28-29

Kent Power Bollard KPB900

### 30-31

Kent Water Bottle Refill Station  
KWRS1370

### 32-33

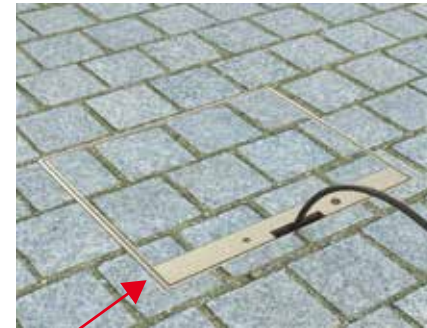
Kent Recharge Bollard  
KRB1438



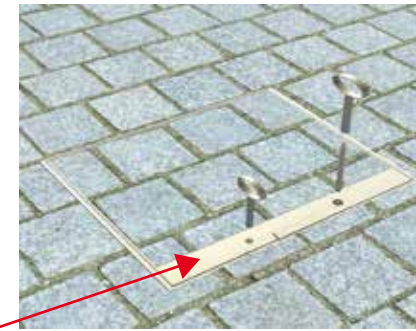
# IN GROUND UNITS



Notch in Top Cover  
for Cable Extension



Use in Closed Position



Slam Lock &  
Hold Down Lock



Double Lock System



Lift Assist Covers



80mm Tray for  
60mm Pavers &  
20mm Bedding



Audio XLR,  
Fibre, Video



Data  
RJ45



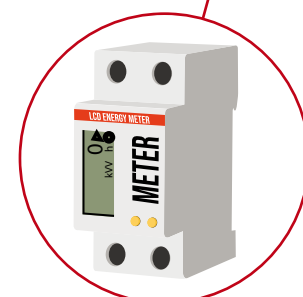
Power  
16a / 32a /  
63a / 125a



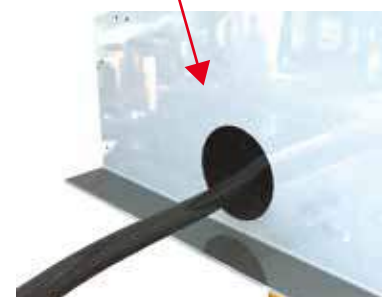
RCBO  
non-sequential  
& with heater



Grade 316L Stainless Steel  
as Standard



Generate Revenue  
with a Power Meter

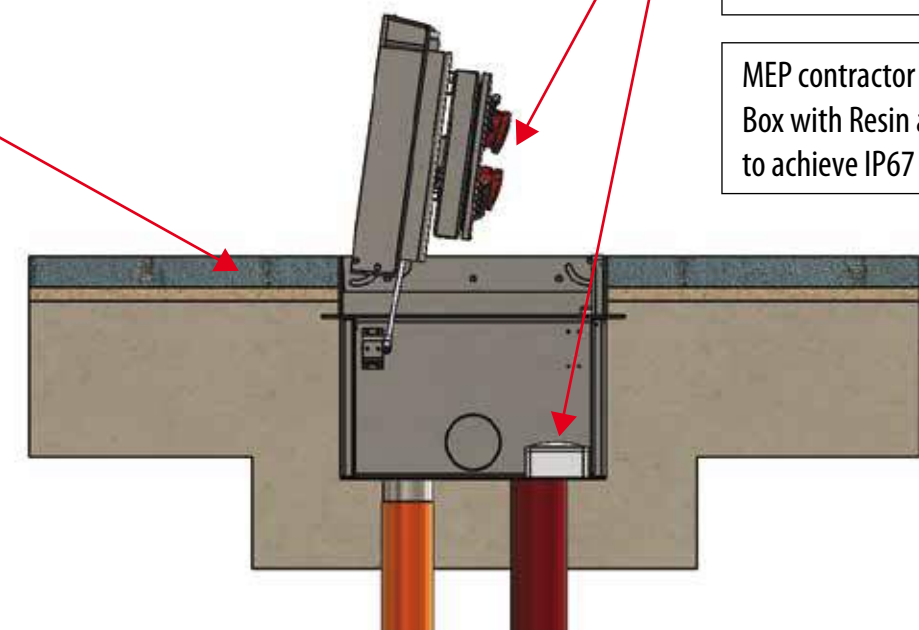


Power Entry  
from Side



Power Entry  
from Bottom

Bottom  
Drainage 110mm



Electrical Unit is fully  
prewired and tested

MEP Contractor just  
connects to Junction Box

MEP contractor fills Junction  
Box with Resin after connection  
to achieve IP67 Rating

Surround 250mm All Round with Concrete

# Delivering Across the Globe

## IRELAND

Sir John Rogers Quay, Dublin  
Cricket Ireland, Abbotstown, Dublin  
Windmill Lane, Dublin  
Dundrum Town Centre, Dublin  
Peace Park Christchurch, Dublin  
The Mardyke, Cork  
Youghal Town Centre, Cork  
Bantry Town Centre, Cork  
Public Library Park, New Ross, Wexford  
Gorey Town Centre, Wexford  
Min Ryan Park, Wexford  
Bishops Palace, Waterford  
The Curragh Racecourse, Kildare  
Dunboyne Town Centre, Meath

## UK

Woolwich Market, London  
Broadgate Circle, London  
Cutty Sark, London  
Pancras Square, London  
Kings Cross Station, London  
IQL, Stratford, London  
Coaldrops, Kings Cross, London  
Buckingham Gate, London  
Goodman's Field, London  
Imperial College, London  
Greenford Green, London  
Battersea Power Station, London  
Wharf Road Kings Cross, London  
Lime Street, London  
Paddington Central, London  
KKO Kings Cross, London  
Royal Arsenal, London  
Tollgate Retail Park, Colchester, Essex  
Mayflower Retail Park, Basildon, Essex  
Orbital Shopping Park, Swindon  
Giltbrook Retail Park, Nottingham  
Yorkminster Cathedral, York  
Royal Shakespeare Theatre, Stratford-upon-Avon  
Church Street West, Woking  
Leatherhead, Surrey  
National Galleries of Scotland, Glasgow  
Drake Circus, Plymouth

## QATAR

Msheirib Phase 1C, Doha  
Lusail Multi Sports Complex  
Wajbah Palace, Doha  
Doha Oasis  
Crescent Park, Lusail  
New Doha Port Development

## UNITED ARAB EMIRATES

Dubai Opera House  
Dubai Canal  
Marsa Al Seef, Dubai  
Bluewaters Island, Dubai  
Dubai Creek Harbour  
Town Square, Dubai  
Mudon Park, Dubai  
Dubai Arena  
EXPO 2020 – Sustainability Pavilion  
EXPO 2020 – Mobility Pavilion  
EXPO 2020 – Al Wasl Plaza  
The Cove, Hudyarat Island, Abu Dhabi  
Dubai Mall Extension  
Al Zahia City Center, Dubai

## REST OF THE WORLD

Queen Victoria Market, Melbourne, Australia  
Penrose, Auckland, New Zealand  
Villaggio Project, Khobar, Saudi Arabia  
Liepaja, Latvia



**KENT P1 - Type 1 IGU**

The Kent in Ground Power Unit, **KIGU-400/450 Type 1** is an ideal product for food vendors, outside broadcast units, performers, Christmas tree locations and anywhere that cable clutter needs to be reduced.

The IGU Type 1 contains an IP67 rated electrical panel that can house 1 or 2 16 amp sockets. For added safety the lids can be closed during operation, this setting requires a 450mm depth to allow for plug in space. There is also an option for a shallow unit that has a 320mm depth. However, this depth restricts the unit to use only in the open position.

The recessed cover ensures the units are unobtrusive when not in use. The recessed covers are manufactured in accordance with FACTA and BS EN124 standards. The covers are suitable for 60mm paving blocks and can be customised for 80/100mm. They are fabricated in Grade 316 stainless steel as standard.

**Features**

- ❑ Gas Rams
- ❑ 2nr IP67 rated sockets as standard
- ❑ Slam lock
- ❑ Excellent for market trading areas
- ❑ 110mm diameter outlet point

**Designed For**

- ❑ 2nr 16 Amp 1 Phase



Product Code	Visible Frame Size	Unit Depth	Cable Duct (Ø)
KIGU 400/450	400mm x 450mm	450mm	125mm

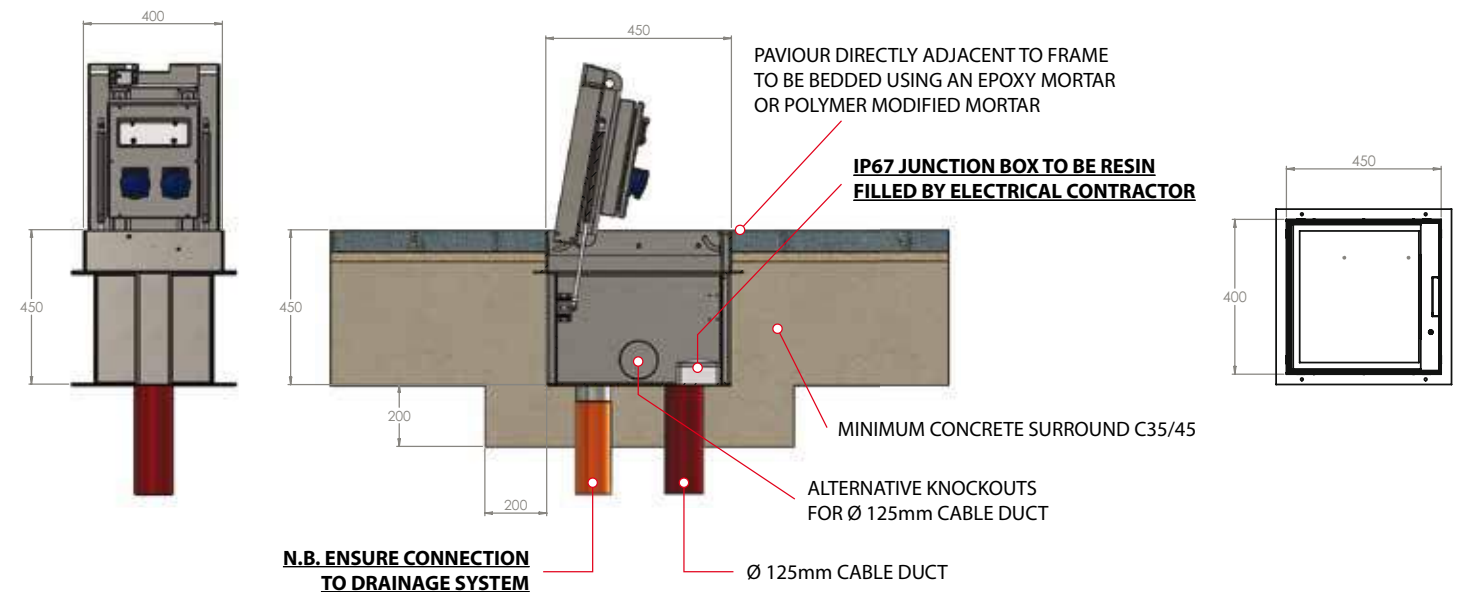
**Specify Kent IGU– Type 1; (KIGU 400/450); 400mm x 450mm top ; with a 450mm depth (Closed Use); Grade 316 Stainless Steel; 2nr 16 Amp 1 Phase**



44 Ton Truck  
FACTA B Loading  
EN124 B125 Loading

**KENT P1 - Type 1 IGU**

This box is typically used for access by maintenance crews -  
Power Washers, Lighting, Monolith Displays, Ticket Sales.





## KENT P2 - Type 2 IGU

The Kent Paver in Ground Power Unit, **KIGU- 450/600 Type 2** is an ideal product for trading areas, open air areas with events and exhibitions where temporary power is required. This model, Type 2 has a 450mm x 600mm top recessed cover.

It contains an IP67 electrical panel that holds a combination of up to four sockets either 16 Amp or 32 Amp 1 Phase. Alternatively, it can hold a smaller IP67 electrical panel with two sockets plus an additional data panel with up to four RJ45 data points. For added safety the lids can be closed during operation, this setting requires a 450mm depth to allow for plug in space. There is also an option for a shallow unit that has a 320mm depth. However, this depth restricts the unit to use only in the open position.

The hinged recessed cover ensures the units are unobtrusive when not in-use. The In Ground Power Units are manufactured in accordance with FACTA and BS EN124 standards. The covers are suitable for all types of paving blocks and are manufactured to meet required loadings. They are fabricated in grade 316 stainless steel as standard.



Product Code	Visible Frame Size	Unit Depth	Cable Duct (Ø)
KIGU 450/600	450mm x 600mm	450mm	125mm
KIGU 500/600-3Ph	500mm x 600mm	500mm	125mm

### Features

- ❑ Gas Rams
- ❑ Up to 4nr IP67 rated sockets
- ❑ Slam lock
- ❑ Suitable for market trading areas
- ❑ 110mm diameter outlet point

### Designed for

- ❑ 2nr 32 Amp 1 Phase sockets with 4nr RJ45 data points  
or
- ❑ 2nr 32 Amp 1 Phase sockets plus 2nr 16 Amp 1 Phase sockets  
or
- ❑ 2nr 32 Amp 3 Phase  
(500mm deep unit)

### Other Options

- ❑ 4nr 16 Amp 1 Phase
- ❑ 3nr 32 Amp 1 Phase



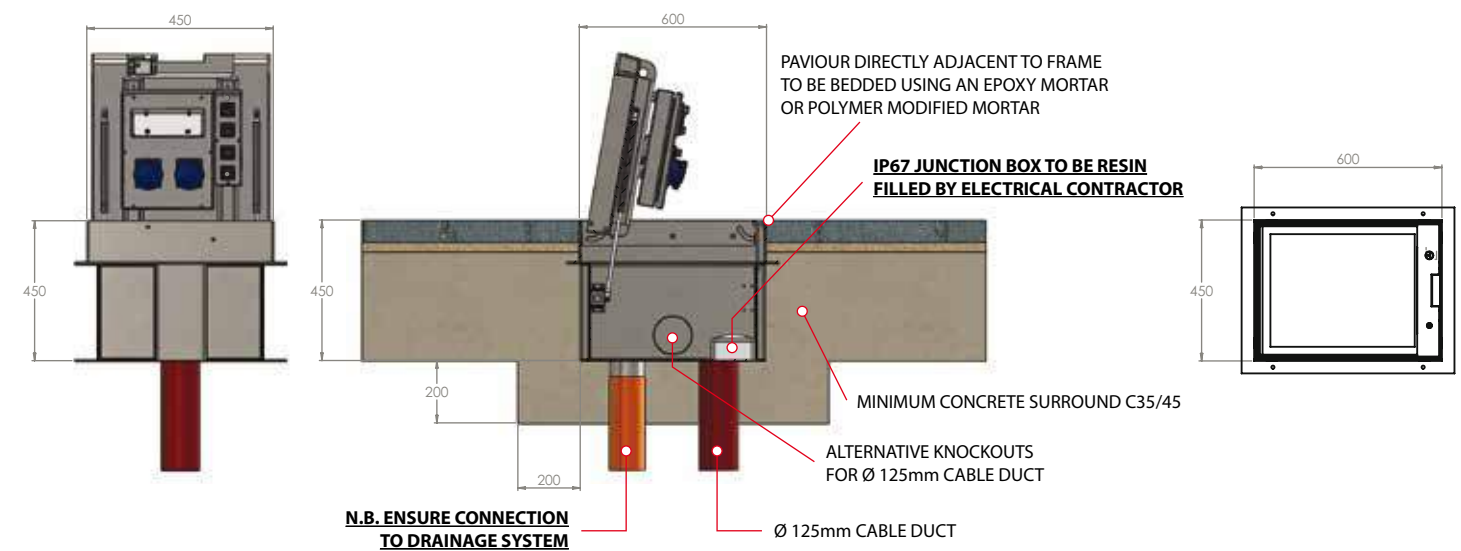
44 Ton Truck  
FACTA B Loading  
EN124 B125 Loading

Specify Kent IGU– Type 2; KIGU 450/600; 450mm x 600mm top ; with a 450mm depth (Closed Use); Grade 316 Stainless Steel; 2nr 32 Amp 1 Phase; 4nr RJ45 Data

## KENT P2 - Type 2 IGU



Use this box for Food Carts connecting cooking equipment.  
Can have 32 Amp 3 Phase Power for heavy use.





## KENT P3 - Type 3 IGU



The Kent Paver in Ground Power Unit, **KIGU- 600/600 Type 3** is an ideal product for trading areas, open air areas with events and exhibitions where temporary power is required. This model, Type 3 has a 600mm x 600mm top recessed cover.

It contains an IP67 rated electrical panel that holds a combination of 3 or 4 sockets either 16A, 32A or 63amp Single Phase or Three Phase sockets. An additional data panel with 1 to 4 RJ45 sockets can also be added to this unit along with the sockets. For added safety the lids can be closed during operation, this setting requires a 450mm depth to allow for plug in space. There is also an option for a shallow unit that has a 320mm depth. However, this depth restricts the unit to use only in the open position.

The hinged recessed cover ensures the units are unobtrusive when not in-use. The In Ground Power Units are manufactured in accordance with FACTA and BS EN124 standards. The covers are suitable for all types of paving blocks and are manufactured to meet required loadings. They are fabricated in grade 316 stainless steel as standard.



Product Code	Visible Frame Size	Unit Depth	Cable Duct (Ø)
KIGU600/600	600mm x 600mm	450mm	125mm
KIGU600/600-3Ph	600mm x 600mm	500mm	125mm
KIGU600/650-63A	600mm x 650mm	650mm	125mm

Specify Kent IGU– Type 3; KIGU 600/600; 600mm x 600mm top ; with a 450mm depth (Closed Use); Grade 316 Stainless Steel; 2nr 16 Amp 1 Phase & 2nr 32 Amp 3 Phase Sockets; 4nr RJ45 Data

SSpecify Kent IGU– Type 3; KIGU 600/600(500)-3Ph; 600mm x 600mm top ; with a 500mm depth (Closed Use); Grade 316 Stainless Steel; 2nr 16amp 3 Phase & 1nr 32amp 3 Phase Socket; 4nr RJ45 Data

Specify Kent IGU– Type 3; KIGU 600/650(650)-63A; 600mm x 650mm top ; with a 650mm depth (Closed Use); Grade 316 Stainless Steel; 1nr 63amp 3 Phase

## Features

- ❑ Mechanical Rams
- ❑ Up to 4nr IP67 rated sockets
- ❑ Slam lock
- ❑ Suitable for market trading areas
- ❑ 110mm diameter outlet point

## Designed for

- ❑ 3nr 32 amp + 4nr RJ45 Data or
- ❑ 2nr 32a + 2nr 16a + 4nr RJ45 Data

## Other Options

(Limits sockets to two)

- ❑ RJ45 Datapoints
- ❑ XLR Audio Connection



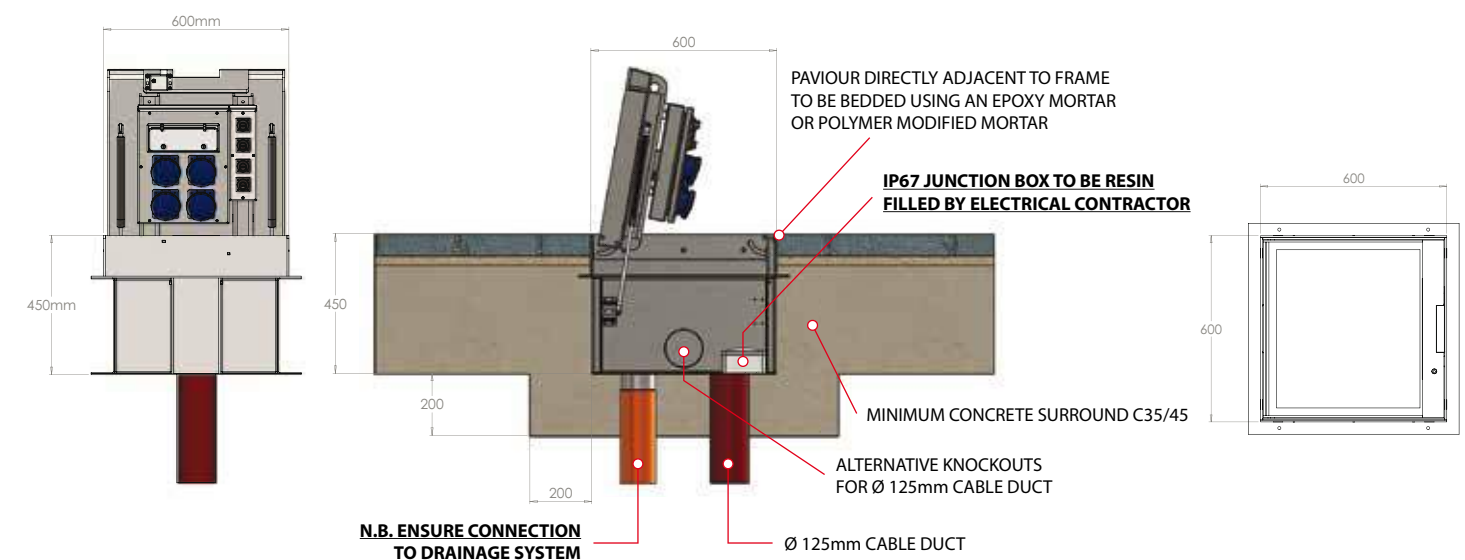
44 Ton Truck  
FACTA B Loading  
EN124 B125 Loading

## KENT P3 - Type 3 IGU



Deeper version can take 32 Amp 3 Phase Power.

A slightly larger variation is our smallest box that can take 63 Amp 3 Phase power.





## KENT T4 Power IGU



The Kent Paver in Ground Power Unit, **Type 4** unit is an ideal product for trading areas, open air areas with events and exhibitions where temporary power is required. This model, Type 4 has a 760mm x 600mm top recessed cover.

The Type 4 was designed to take 4nr 32a 3 phase sockets. The housing can take other combinations smaller than this including 16A, 32A, or 63A Single Phase or Three Phase sockets. An additional data panel with 1 to 4 RJ45 datapoints or XLR audio points can also be added to this unit along with the sockets.

The lids can be closed during operation, this necessitates a 500mm overall depth.

The hinged recessed cover ensures the units are unobtrusive when not in-use. The In Ground Power Units covers are manufactured in accordance with FACTA and BS EN124 standards. The covers are suitable for 60mm deep paving blocks and are manufactured to meet required loadings. They are fabricated in grade 316 stainless steel as standard.



Product Code	Visible Frame Size	Unit Depth	Cable Duct (Ø)
KIGU760/600	760mm x 600mm	500mm	125mm
KIGU850/600-Data	850mm x 600mm	500mm	125mm
KIGU850/600-63A+Data	850mm x 600mm	650mm	125mm

Specify Kent IGU– Type 4 Unit; 760mm x 600mm top; with a 500mm depth (Closed Use); Grade 316 Stainless Steel; EP031– 3nr 32 amp 3 phase plus 1nr 16 amp 1 phase Sockets

## Features

- ☐ Gas Rams
- ☐ Up to 4nr IP67 32a 3 Phase sockets
- ☐ Slam lock
- ☐ Secondary secure holding down lock
- ☐ Suitable for market trading areas
- ☐ 110mm diameter drain outlet point

## Designed for

- ☐ 1nr 16 Amp 1 Phase plus 3nr 32 amp 3 Phase sockets or
- ☐ 4nr 32 Amp 1 Phase sockets or
- ☐ 2nr 63 Amp 3 Phase sockets (650mm deep unit)

## Other Options

- ☐ RJ45 Datapoints
- ☐ XLR Audio Connection
- ☐ Fiber Connections



44 Ton Truck  
FACTA B Loading  
EN124 B125 Loading

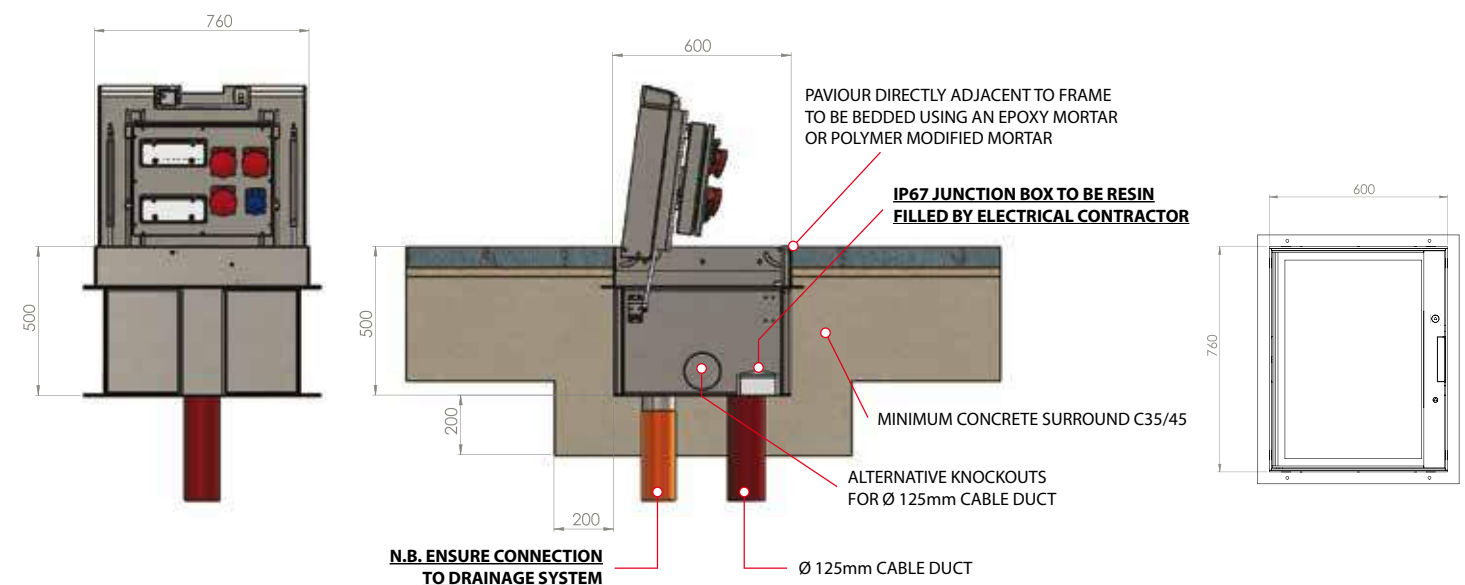
## KENT T4 Power IGU



This box is used where there are multiple carts with heavy power requirements.

Widen the box to add a strip of Data.

Deepen the Box to use > 1nr 63 Amp 3 Phase Power.





## KENT T5 1200mm Square – Event Box

The Kent Paver in Ground Power Unit, **Type 5 1200mm Square** is an ideal product for trading areas, open air areas with events and exhibitions and this is typically made of a 125a, a 63a and a 16a connection.

The Type 5 was designed to take the above configuration – but this large housing can of course alternatively contain lower power connections plus mix of Audio, Data, Fibre, Digital Video sockets.

The lid can must remain open during operation, and the unit requires a 950mm overall depth.

This lid has a manual hydraulic lift assist mechanism and the front flap conceals this bottle pump, which should be used in conjunction with the handle extension stored elsewhere. Because the lid must be used in it's open position, 2 loose cover plates are included to cover the opening during operation.

The hinged recessed cover ensures the units are unobtrusive when not in-use. The In Ground Power Unit Type 7 covers are manufactured in accordance with FACTA and BS EN124 standards. The covers are suitable for 60mm deep paving blocks and are manufactured to meet required loadings. They are fabricated in grade 316 stainless steel as standard.

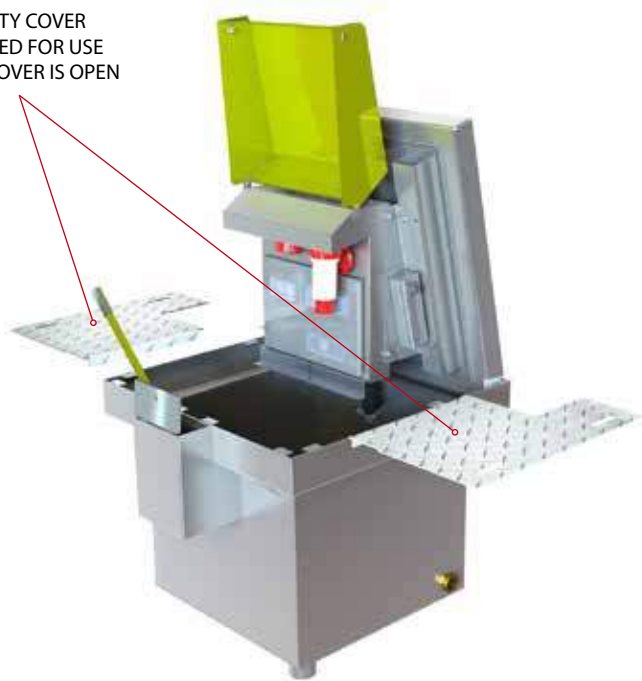
### Features

- ❑ Hydraulic Manual Lift Assist
- ❑ Range of power 125a, 63a, 32a, 16a
- ❑ Weather tight
- ❑ Suitable for public entertainment areas
- ❑ 110mm diameter drain outlet point
- ❑ Use in Open Position only

### Designed For

- ❑ 1nr 125 Amp 3 Phase;
- 1nr 63 Amp 3 Phase;
- 1nr 16 Amp 1 Phase;
- 2nr RJ45 Data

SAFETY COVER  
SUPPLIED FOR USE  
WHEN COVER IS OPEN



44 Ton Truck  
FACTA B Loading  
EN124 B125 Loading

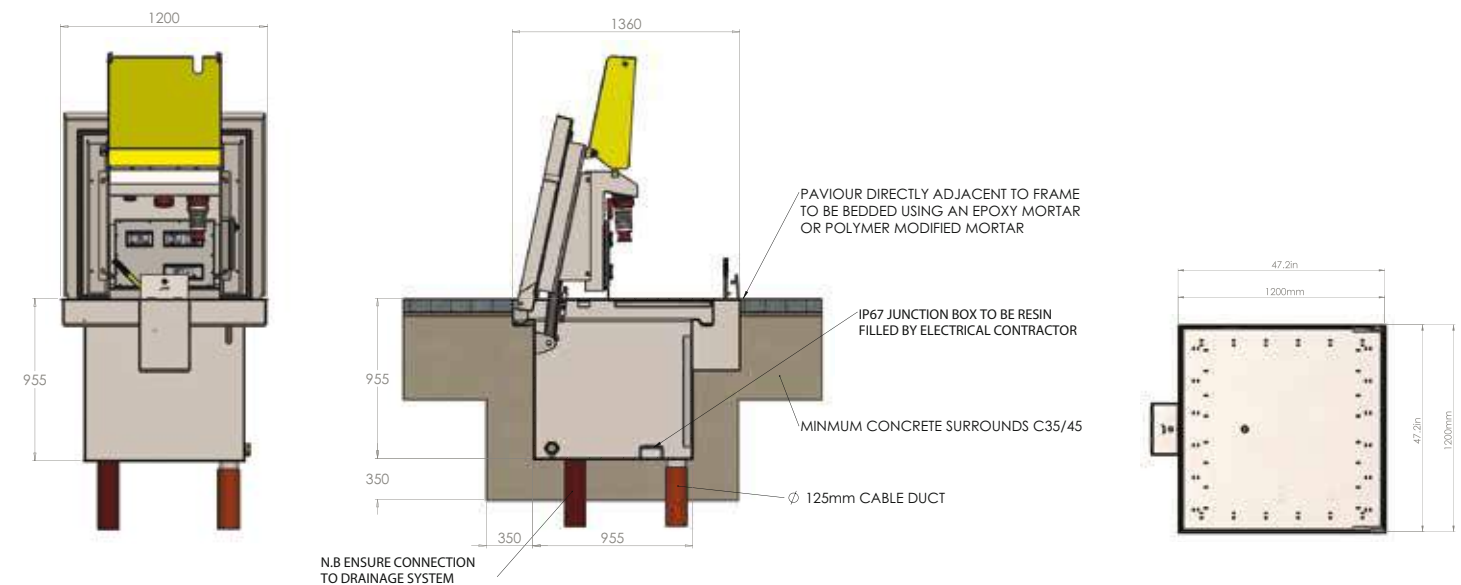
Product Code	Visible Frame Size	Unit Depth	Cable Duct (Ø)
KIGUEB1200/1200	1200mm x 1200mm	995mm	125mm

**Specify Kent IGUEB – Type 5 Unit; 1200mm x 1200mm top; with a 955mm depth (Open Use); Grade 316 Stainless Steel; 1nr 125 Amp 3 Phase, 1nr 63 Amp 3 Phase, 1nr 16 Amp 1 Phase, 2nr RJ45 Data**

## KENT T5 1200mm Square – Event Box



This Event Box is for major large scale events - such as plugging in an Ice Rink in addition to the regular food cart and lighting demand that accompanies this.



**KENT T6 Telescopic Unit**

The **Kent T6 Telescopic in Ground Power Unit** is ideal Suitable for arenas, areas hosting large events, and areas where temporary power may be required. This model has a 600mm x 600mm recessed cover for stone infill. The unit can be opened by the using a turn handle or cordless drill on the adaptor in the centre of the tray.

This unit can hold up to a maximum combination of up to 8nr IP67 rated electrical sockets (maximum 192 amps) and 8nr IP67 data points. The unit also contains a housing for an IP68rated Junction box and has a 110mm diameter drainage outlet to prevent water sitting in the base of the unit.

The covers are manufactured in accordance with FACTA and BS EN124 standards. The covers are suitable for 60mm deep paving blocks and are manufactured to meet required loadings. They are fabricated in grade 316 stainless steel as standard.

**Features**

- ❑ Up to 12nr IP67 rated sockets (Max 192amps)
- ❑ 110mm diameter drainage outlet
- ❑ Recessed cover for stone infill
- ❑ Raised by turning handle/cordless drill

**Designed For**

- ❑ 8nr 32a 1Ph; 8nr RJ45 Data

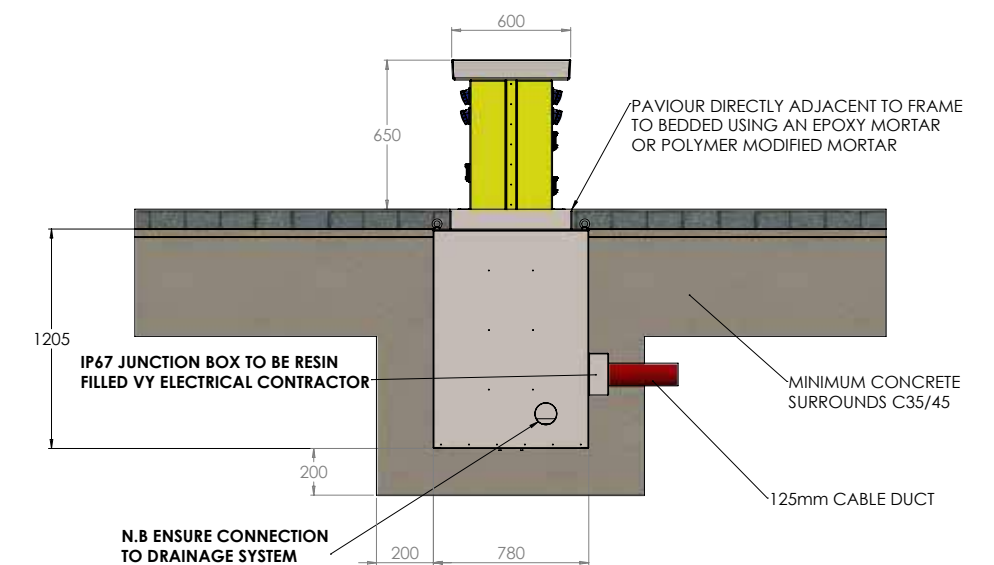


Product Code	Visible Frame Size	Unit Depth	Cable Duct (Ø)
KIGUT600/600	600mm x 600mm	1205mm	125mm

**Specify Kent IGU– Telescopic Unit; 600mm x 600mm top; with a 1205mm depth; Grade 316 Stainless Steel; 8nr 32 Amp 1 Phase plus 8nr RJ45 Data**

**KENT T6 Telescopic Unit**

Use this box for multiple operators, where use in the open position is acceptable - eg on campus.







KENT T7 Internal Shallow Box – Mall Power Box

The Kent Tiled in Ground Power Unit, **Type 7 Internal Shallow Box** is an ideal product for Shopping Malls, Retail Parks, Airport and Rail Terminals. This is our most shallow In Ground Unit at 225mm deep vs the regular 450mm deep units. This is created by reducing the top tray to only 35mm and will take a concrete & tile infill rather than pavers. It is designed for areas with high footfall, frequent and intense pedestrian activity, plus occasional 500kg or 1000kg sack trolleys, pallets.

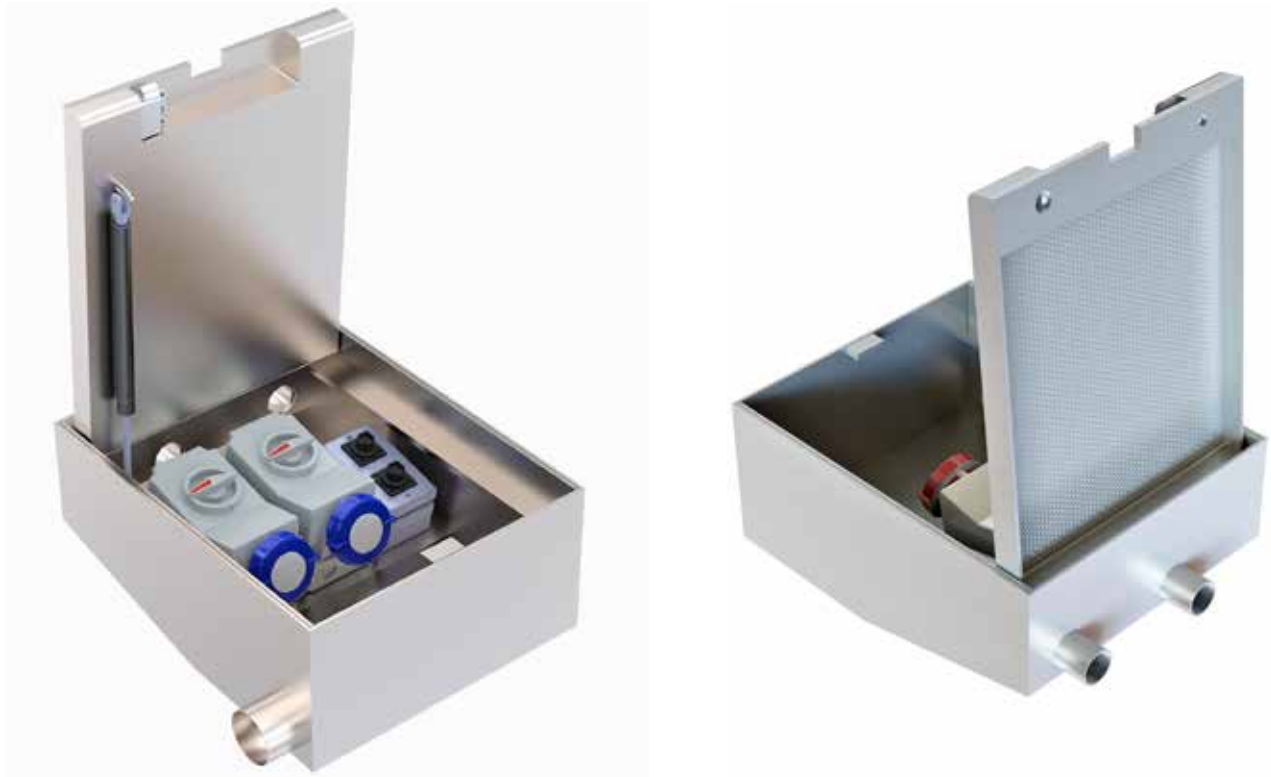
Notable also the RCBO protection is removed from this box to achieve this shallow depth and must be provided elsewhere on the incoming circuit.

The Type 7 was designed to take a mix of 2nr 32a 1 Phase Power sockets plus 2nr RJ45 data sockets.

The lids can be closed during operation, this necessitates a 225mm overall depth. The hinged recessed cover ensures the units are unobtrusive when not in-use. The In Ground Power Units covers are manufactured in accordance with FACTA and BS EN124 standards. They are fabricated in grade 316 stainless steel as standard.

- Features**
- ❑ Gas Rams
  - ❑ Up to 2 Power Sockets
  - ❑ Up to 2 Data Sockets
  - ❑ Slam lock
  - ❑ Secondary secure holding down lock
  - ❑ Suitable for public concourse areas
  - ❑ 60mm diameter drain side outlet point

- Socket Combinations**
- ❑ 2nr 32 Amp 1 Phase plus 2nr RJ45 Data



Product Code	Visible Frame Size	Unit Depth	Cable Duct (Ø)
KIGUM440/550	440mm x 550mm	225mm	50mm x 2

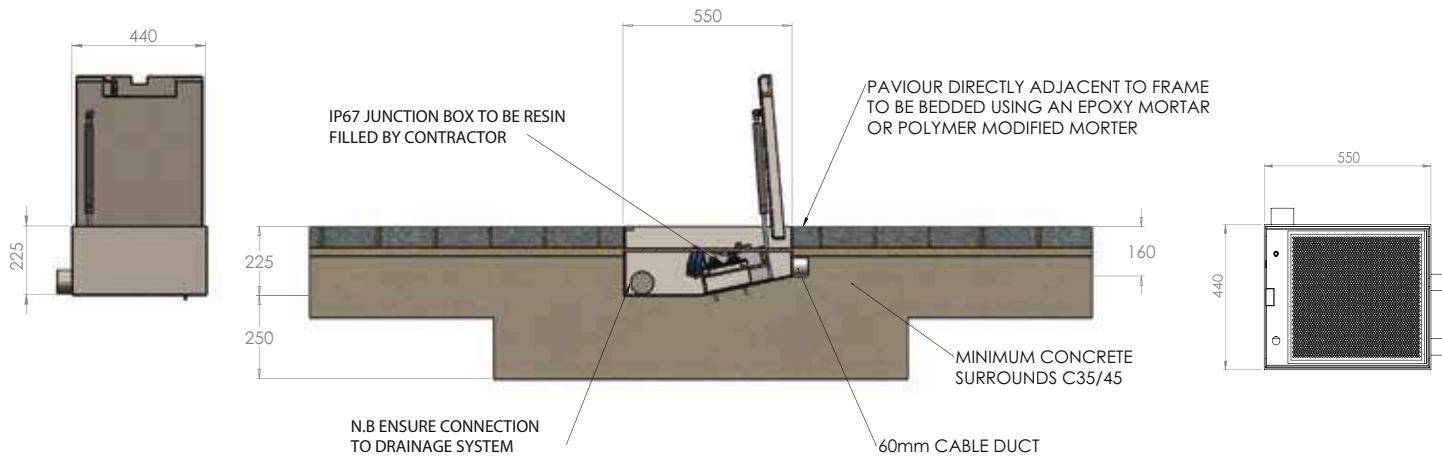
Specify Kent IGUM– Type 7 Mall Unit; 450mm x 550mm top; with a 225mm depth (Closed Use); Grade 316 Stainless Steel; 2nr 32 Amp 1 Phase, 2 RJ45 Data



KENT T7 Internal Shallow Box – Mall Power Box



This box is used where depth restrictions are in place. Removing the RCBO protection and the use of tiles instead of pavers facilitates the shallow 225mm depth.



**KENT T8 - Type 8 Broadcast Box**

The Kent Paver in Ground Power Unit, **T8 - Type 8 Broadcast Box** is an ideal product for trading areas, open air areas with events and exhibitions where Audio, Video and Fibre connections are required. This model, Type 8 has a 550mm x 600mm top recessed cover.

The Type 8 was designed to take a mix of Audio, Data, Fibre, Digital Video sockets and we recommend some spare ports as follows:

- 8 XLR Audio
- 4 RJ45 Data
- 4 Fibre
- 4 Digital Video

Note that separate connection cables are required from the distribution board to each socket in order to eliminate interference or static between the connections.

The lids can be closed during operation, this necessitates a 450mm overall depth.

The hinged recessed cover ensures the units are unobtrusive when not in-use. The In Ground Broadcast Box Units covers are manufactured in accordance with FACTA and BS EN124 standards. The covers are suitable for 60mm deep paving blocks and are manufactured to meet required loadings. They are fabricated in grade 316 stainless steel as standard.



Product Code	Visible Frame Size	Unit Depth	Cable Duct (Ø)
KIGUBB550/600	550mm x 600mm	450mm	125mm

**Specify Kent IGUBB– Type 8 Broadcast Box Unit; 550mm x 600mm top; with a 450mm depth (Closed Use); Grade 316 Stainless Steel; 8 XLR Audio, 4 RJ45 Data, 4 Fibre, 4 Digital Video, 4 Spare**

**Features**

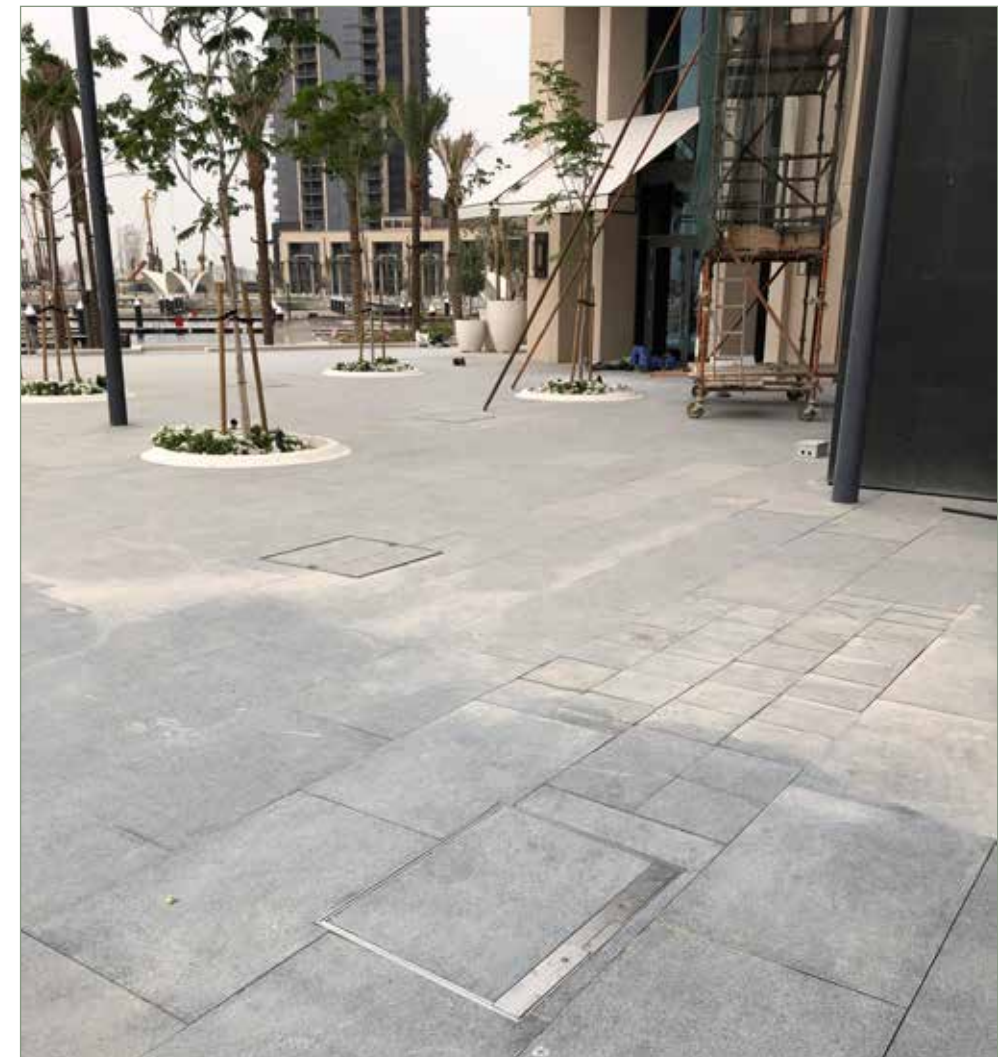
- ❑ Gas Rams
- ❑ Up to 28 Broadcast sockets
- ❑ Slam lock
- ❑ Secondary secure holding down lock
- ❑ Suitable for public entertainment areas
- ❑ 110mm diameter drain outlet point

**Designed For**

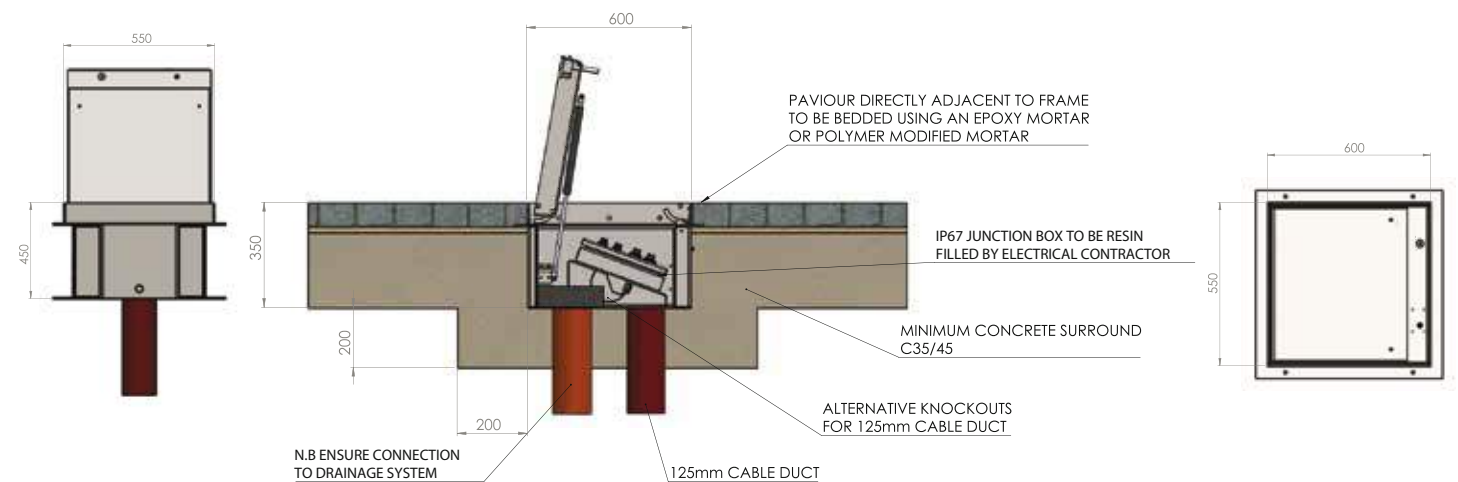
- ❑ 8 XLR Audio
- ❑ 4 RJ45 Data
- ❑ 4 Fibre
- ❑ 4 Digital Video
- ❑ 4 Spare Socket Ports



44 Ton Truck  
FACTA B Loading  
EN124 B125 Loading

**KENT T8 - Type 8 Broadcast Box**

This box is used where Outdoor Digital Displays, or Concert Performance need to be connected temporarily.







KENT T9 Potable Water Unit

The **Kent Paver T9 In Ground Potable Water Unit** is an ideal product for trading areas, open air areas with events and exhibitions where potable water connections are required. In most cases it is used, for example, for a coffee vendor who needs to refill a potable water tank temporarily and then shuts the cover. This model, Type 9 has a 300mm x 600mm top recessed cover.

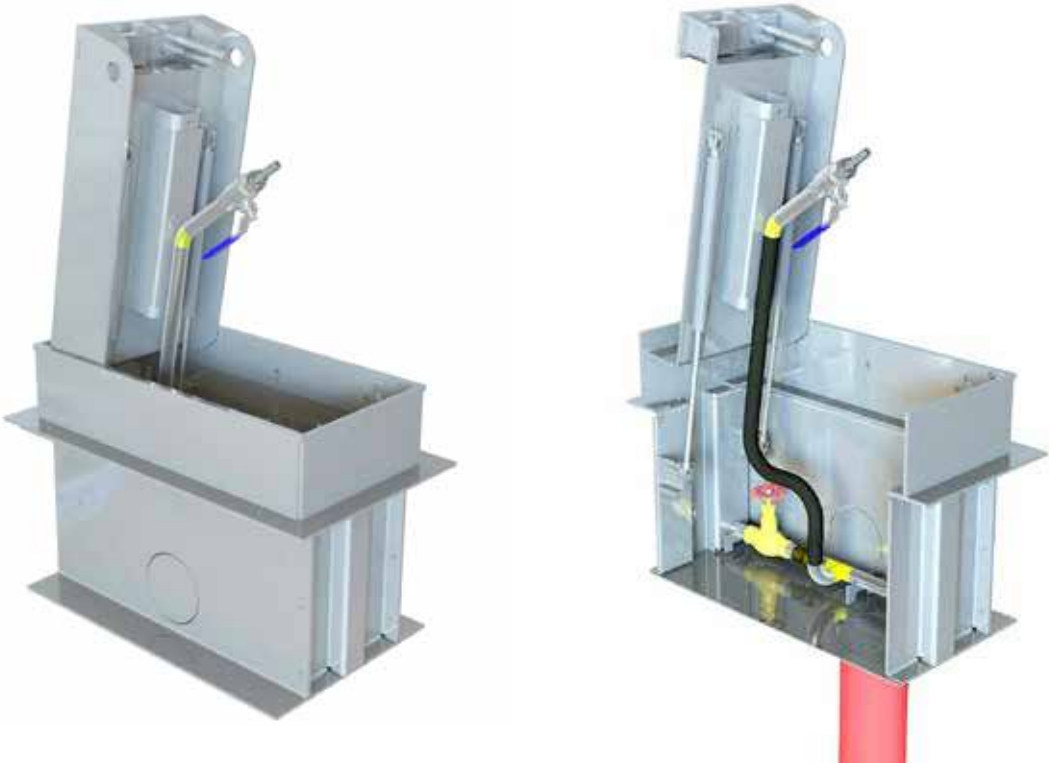
It includes a Non Return Valve to prevent potential back flow of containment water.

A 3/4" Mains Water inlet connects to our 1/2" Water Lever Bib Tap.

It has a Gate valve to shut off / control flow. The lid remains open during operation. The unit must have a drain connection – ideally to a 110mm bottom outlet.

The hinged recessed cover ensures the units are unobtrusive when not in-use. The covers are manufactured in accordance with FACTA and BS EN124 standards. The covers are suitable for 60mm deep paving blocks and are manufactured to meet required loadings. They are fabricated in grade 316 stainless steel as standard.

- Features**
- Gas Rams
  - 1 Bib tap
  - Slam lock
  - Secondary secure holding down lock
  - 110mm diameter drain outlet point



Product	Visible Frame Size	Unit Depth	Inlet (Ø)	Drainage
KIGPWU300/600/450-T8	300mm x 600mm	450mm	3/4" Mains Water	110mm

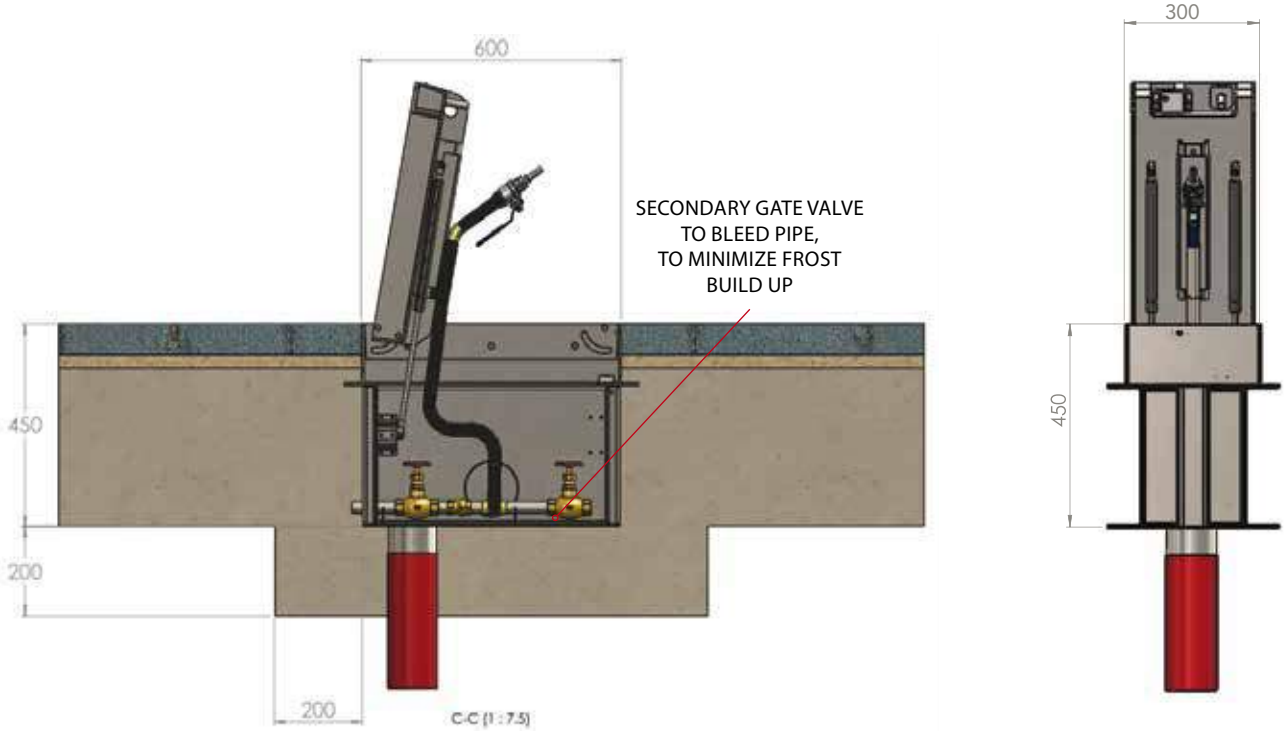
Specify Kent KIGPWU– Type 8 Potable Water Unit; 300mm x 600mm top; with a 450mm depth; Grade 316 Stainless Steel; Loading FACTA B; With Bib Tap, With 110mm bottom drainage outlet



44 Ton Truck  
FACTA B Loading  
EN124 B125 Loading



KENT T9 Potable Water Unit



Food Trucks use this box to Refill their Potable Water Tank during the day to make their Coffee/Tea & Wash Up.

## KENT T10 Grey Water Unit



The **Kent Paver T10 In Ground Grey Water Unit** is an ideal product for trading areas, open air areas with events and exhibitions where a discreet drain is required. In most cases it is used, for example, for a coffee vendor who needs to empty their wash tank temporarily and then shuts the cover. This model, Type 9 has a 300mm x 600mm top recessed cover.

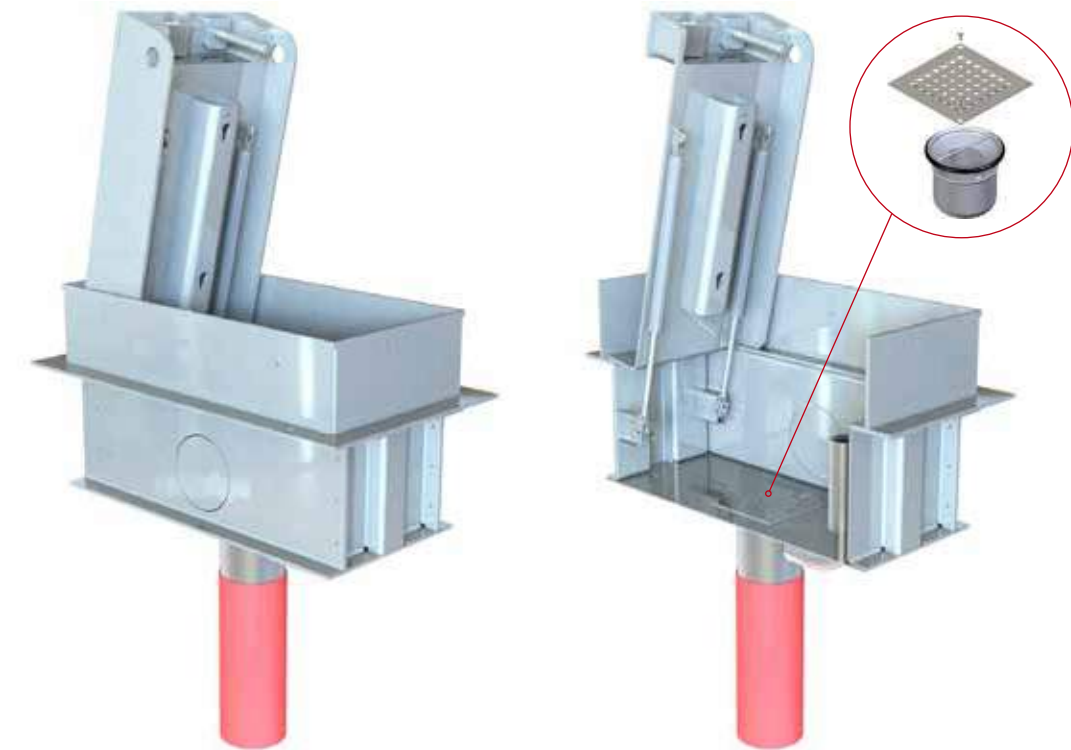
The discharge can be tipped into the body itself or funnelled into the upstand provided. Versions can be customised with ferrule triclamp connections for discharge.

The outlet is trapped by a 110mm bottle trap.

The hinged recessed cover ensures the units are unobtrusive when not in-use. The covers are manufactured in accordance with FACTA and BS EN124 standards. The covers are suitable for 60mm deep paving blocks and are manufactured to meet required loadings. They are fabricated in grade 316 stainless steel as standard.

## Features

- ☐ Gas Rams
- ☐ Slam lock
- ☐ Secondary secure holding down lock
- ☐ 110mm diameter drain outlet point



44 Ton Truck  
FACTA B Loading  
EN124 B125 Loading

Product	Visible Frame Size	Unit Depth	Inlet (Ø)	Drainage
KIGGWU300/600/350	300mm x 600mm	350mm	50mm	110mm

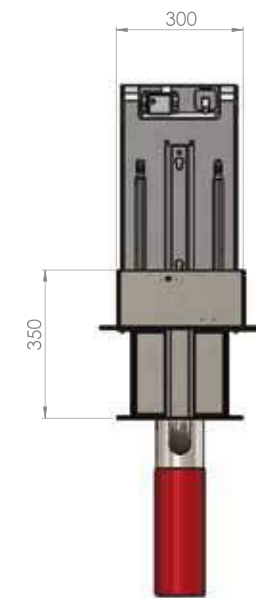
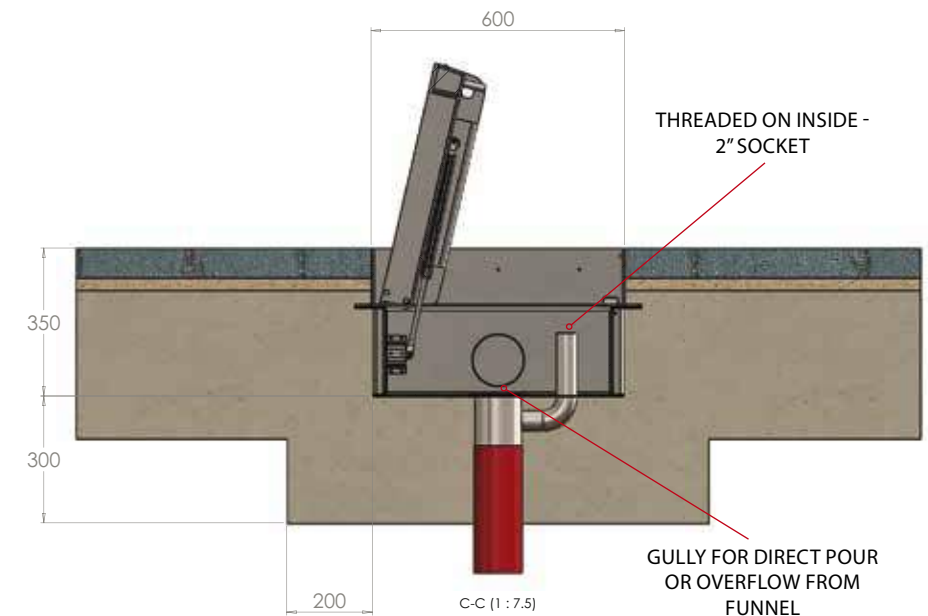
Specify Kent KIGGWU– Type 9 Grey Water Unit; 300mm x 600mm top; with a 350mm depth; Grade 316 Stainless Steel; Loading FACTA B; With 110mm bottom drainage outlet



## KENT T10 Grey Water Unit



Food Carts use this box for Emptying Coffee and other Liquid Waste Tidily during the day.



Commonly made as part of a triple unit including Power, Potable Water Supply and Grey Water Outlet





KENT Power Bollard

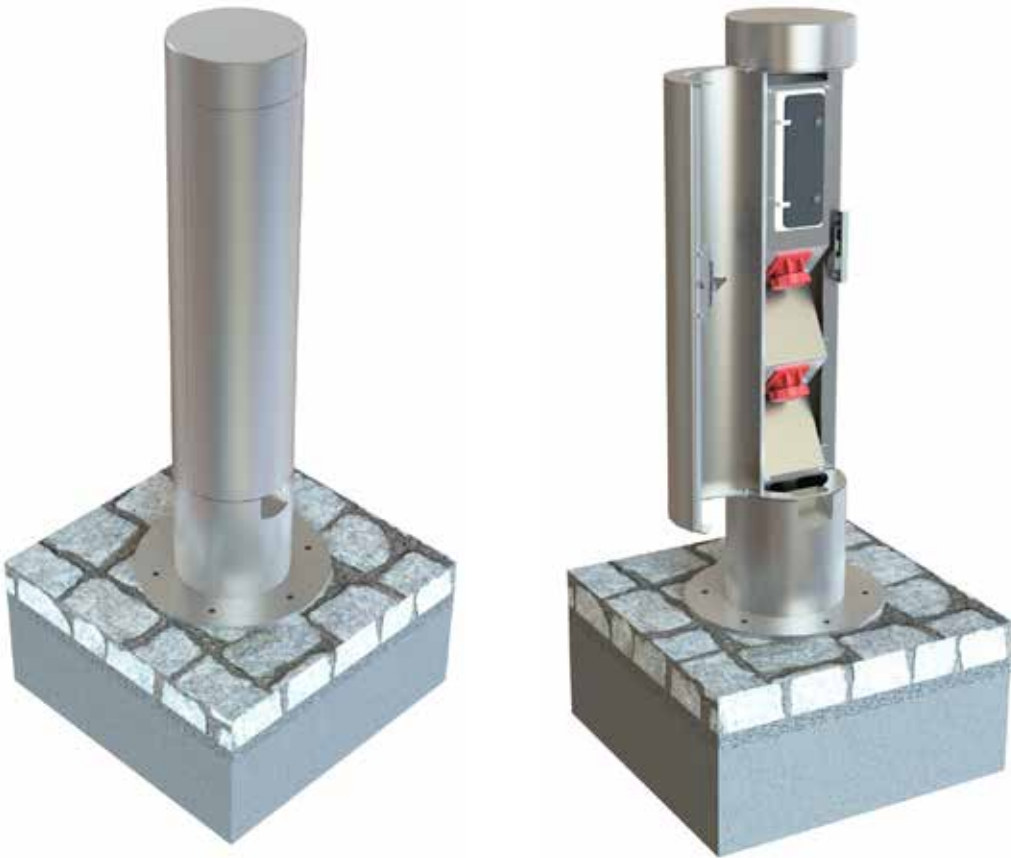
The **Kent Power Bollard** KPB1200 is manufactured from Grade 316L Stainless Steel with a Bright Peened Finish as standard. The bollard stands 1050mm above ground level.

219mm is the standard diameter with 2nr 32 Amp 3 Phase sockets.

This product is ideal for town centre environments, sporting arenas, shopping centres, events or anywhere where temporary power may be required but depth is not available to recess power into an In Ground Power Unit.

- Features**
- Grade 316L Stainless Steel
  - Flat top with 25mm recessed reflector strip - optional

- Designed For**
- 2nr 32 Amp 3 Phase
  - or
  - 2nr 16 Amp 1 Phase



Product	Diameter	Height	Sockets
KPB1050	219mm	1050mm	1 / 2
KPWB1200	256mm	1200mm	1 / 2 + Water

Specify Kent Flat Top Power Bollard KPB-1050; 219mm Diameter ; Grade 316L Stainless Steel; Bright Peened; 2nr 32 amp 3 Phase Sockets; Flat Top; Visible Flange



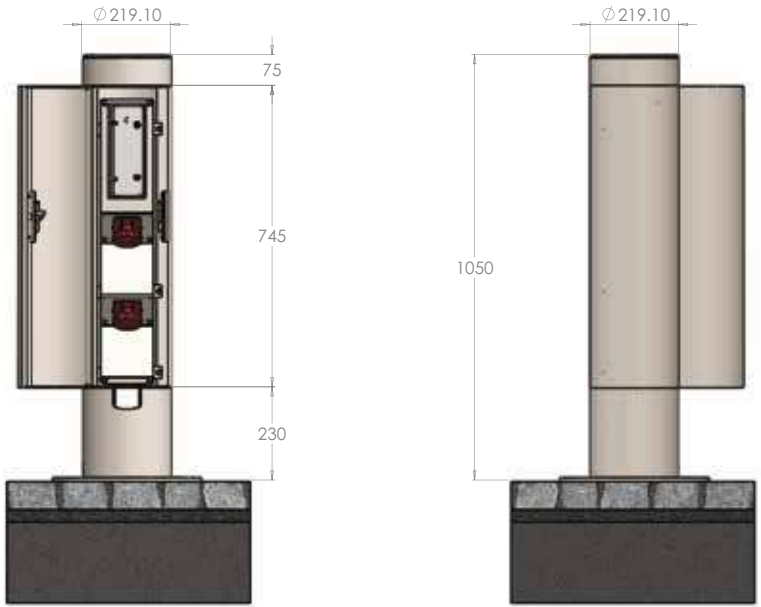
KENT Power Bollard



Use these Power Bollards for Maintenance Crews Power Washing the Facade - or many other uses.



Double Front Door required for Bib Tap at Rear of Bollard



KENT Water Bottle Refill Station



The **Kent Water Bottle Refill Station KWRS1370** is manufactured from Grade 316L Stainless Steel with a Satin 320 Grit polish Finish as standard. The bollard is 1370mm high overall and the bottom 100mm is below paving level so 1270mm stands above ground level.

219mm is the standard diameter and a Bubbler Tap can be added as an option and this extends 250mm from the back of the bollard.

This product is ideal for town centre environments, sporting arenas, shopping centres, events, at cycle shelters or anywhere where potable water may be required.

The Hand Sanitiser version is slightly smaller at 1000mm x 141mm, is foot operated and requires no plumbing. It dispenses sanitising gel from a refillable reservoir.

Features

- Grade 316L Stainless Steel
- Kent Bright Peened Finish as standard
- Customisable
  - Powder coated to any RAL or 2 tone versions available
  - Branding available for companies or councils



OPTIONAL BUBBLER TAP



HAND SANITIZER VERSION KHS1370

Product	Diameter (Ø)	Height	Bubbler Tap
KWRS1370	219mm	1370mm	0/1
KHS1000	141mm	1000mm	

Specify Kent Water Bottle Refill Station KWRS1370; 219mm Diameter; Grade 316L Stainless Steel; Bright Peened; Flat Top; Buried Flange

(state if optional Bubbler Tap is required)



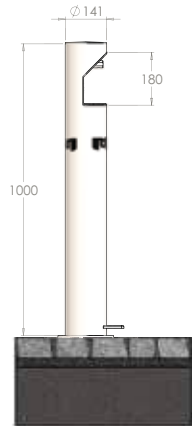
KENT Water Bottle Refill Station



These are used at external high footfall areas such as Parks, Walking Tracks, and at Entrances on Metro, Airport, Stadium Projects.



WATER BOTTLE REFILL STATION



HAND SANITIZER



KENT Recharge Bollard



The **Kent Recharge Bollard KRB1438** is manufactured from Grade 316L Stainless Steel with a Satin 320 Grit polish Finish as standard. The bollard is 1438mm high overall and with a buried flange 100mm below finished paver level it is 1338 above finished ground level.

250mm wide x 150mm deep is the standard size and the socket can either be mounted or hanging. 1 nr 32amp socket is included behind a hinged door for maintenance crew.

Under the publicly accessible flap there are 4nr IP66 USB charge points and 1nr IP66 1 Phase 13a 3 pin socket.

As standard 2 shelves for resting mobile phones are included – but these can be removed or modified before manufacture.

This product is ideal for town centre environments, sporting arenas, shopping centres, events or anywhere where temporary power may be required. The quarter turn lock on the door of the power bollard can be opened with an 8mm Triangular Key.

- Features**
- Grade 316L Stainless Steel
  - 1nr 13 Amp 1 Phase 3 Pin IP66 Socket plus 4nr USB Charge Points IP66 Sockets plus 1nr 32 Amp 3 Phase IP67 Socket
  - Flat top as standard
  - 2 Shelves as standard (available without shelves)
  - Other stainless finishes and powder coating available



Product	Width	Height	Sockets
KRB1438	250mm	1438mm	1/2/3/4

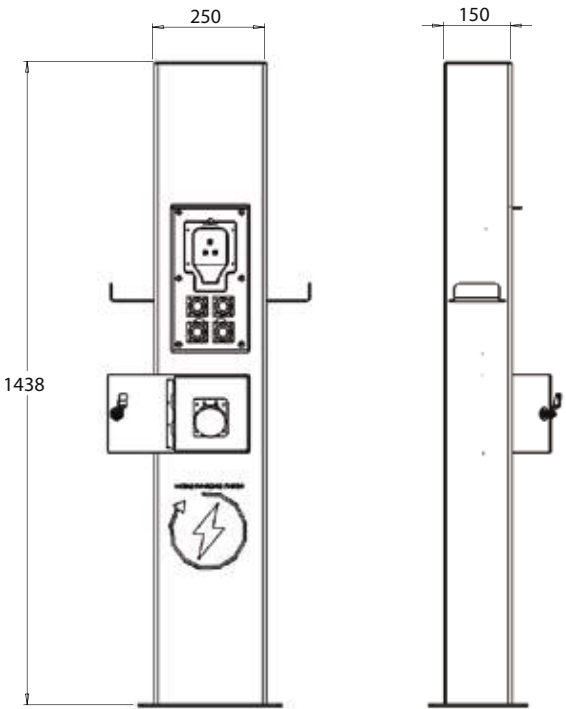
Specify Kent Recharge Bollard 1438; 250mm Wide x 1438mm high ; Grade 316L Stainless Steel; Satin Finish 320 Grit polish; Flat Top; 2 Phone Shelves; Buried Flange; Socket Combination: 4 x IP66 USB, 1 x IP66 3 Pin 1 Phase 13 Amp; 1x IP67 32 Amp 3 Phase

(Other combinations on request)

KENT Recharge Bollard



These Bollards are mainly used in Parks, at Food Courts, Outdoor Dining Areas - places where a user has time to wait for a charge.





## NOTES







---

### **Kent Stainless Ltd**

Ardcavan, Wexford, Ireland  
TEL NO + 353 53 914 3216  
UK FREEPHONE 0800 376 8377  
Qatar +974 3372 1757  
FAX + 353 53 914 1802  
WEB [www.kentstainless.com](http://www.kentstainless.com)  
EMAIL [info@kentstainless.com](mailto:info@kentstainless.com)