

Kent Sheffield Cycle Stand



KENT SHEFFIELD CYCLE STAND - KSCS1120/750

The Kent Sheffield Cycle Stands are supplied manufactured from Grade 316 Stainless steel 48mm diameter tube with a 2mm thickness and as standard is 1120mm high (870mm above ground level) and 750mm wide.

This cycle rack is one of our budget products and is by far the most commonly used type of cycle rack available. The economic, yet robust design, allows two bicycles to be locked in position per cycle rack.

This product is available ex-stock and at competitive rates.

Features:

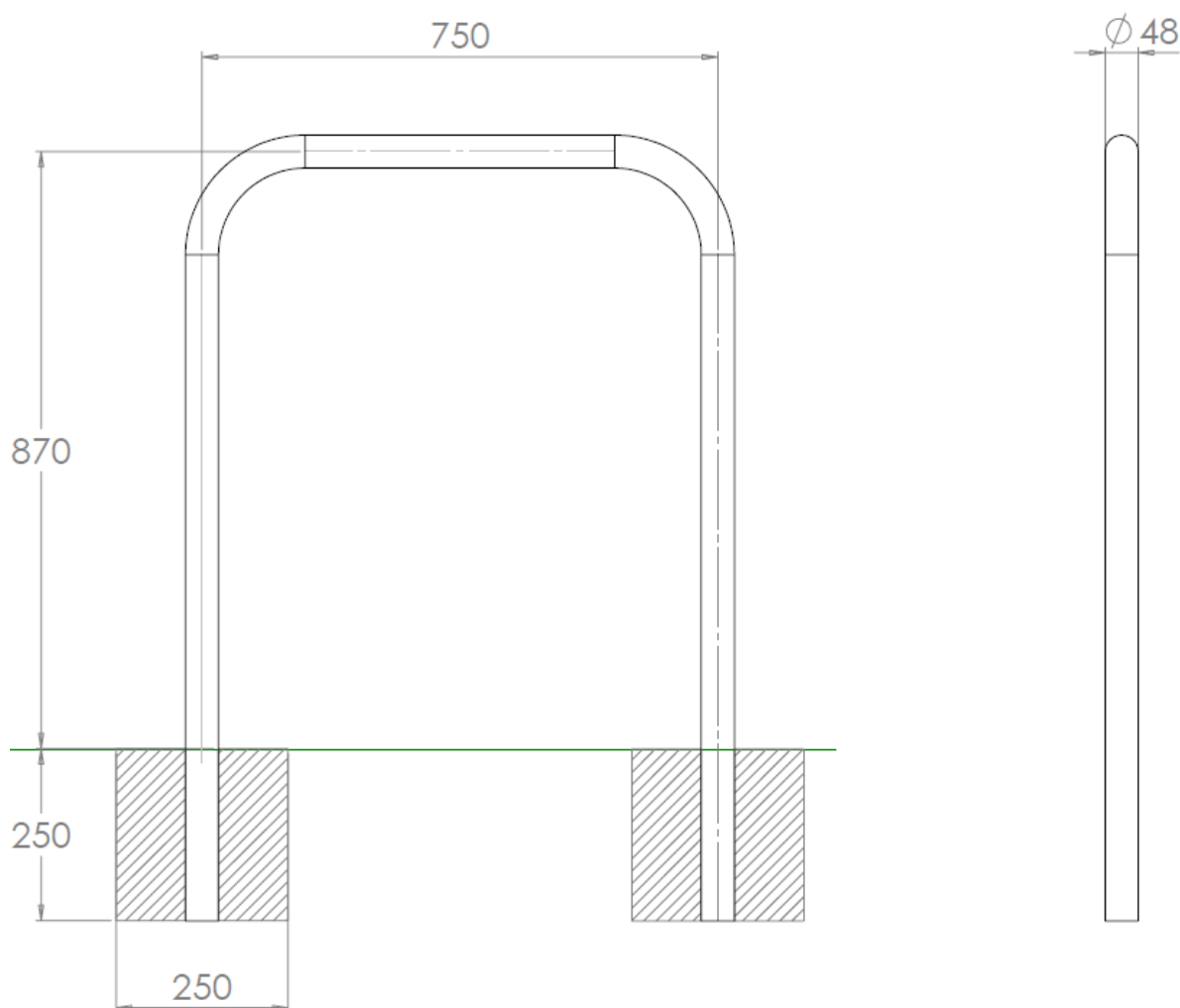
- supplied cast in with fishtails as standard but can be altered to become surface mounted.
- 48mm diameter tube with a 2mm wall.
- Grade 316 stainless steel as standard
- 320 grit polished



Sheffield Cycle Stand—Cast In

The Cast in version of these bollards are supplied with sprags for securing the stands in the concrete foundation.

For installation details see page 7

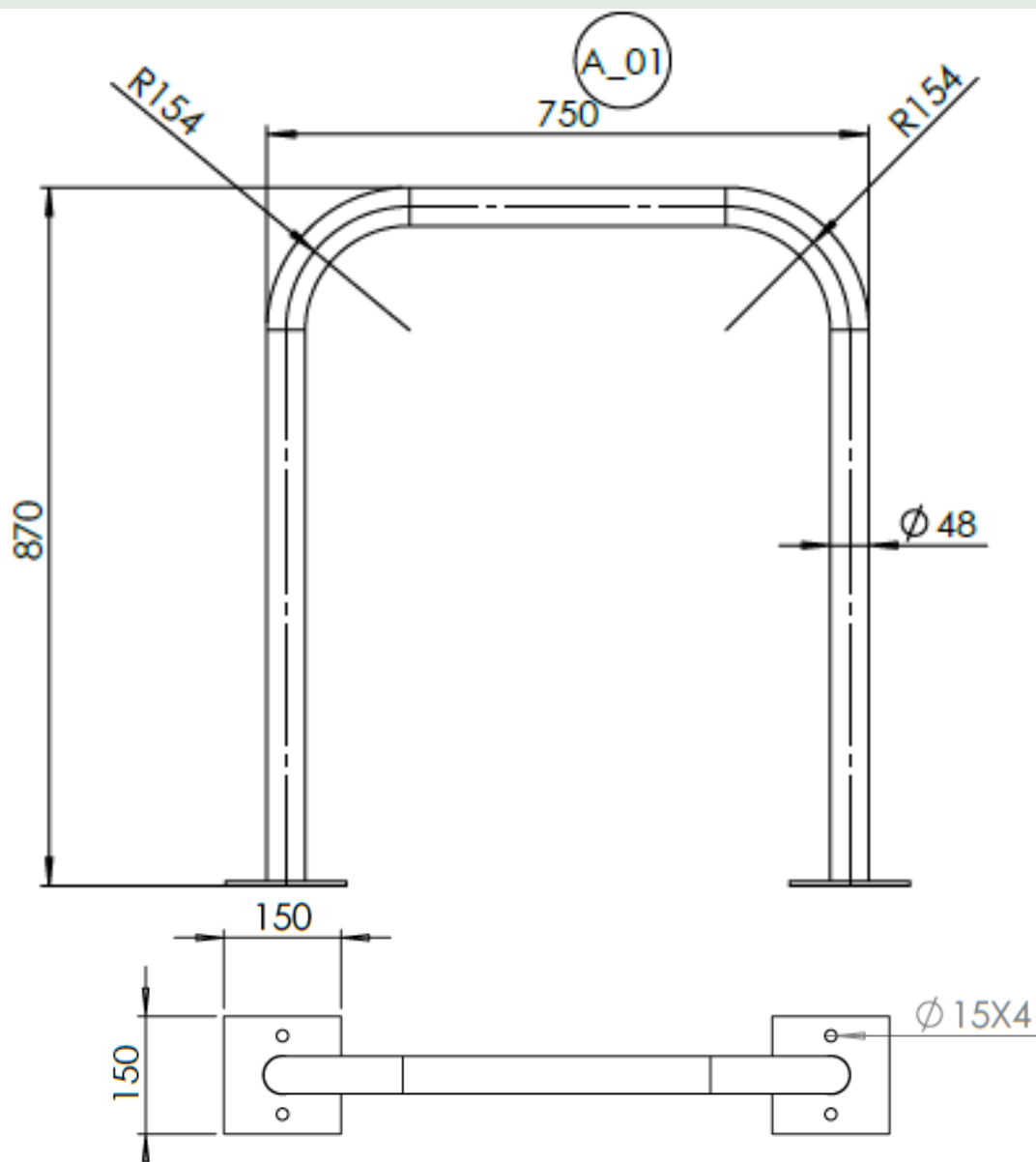


Product Code	Diameter	Height (Above GL)	Height (overall)	Width
Kent Sheffield Cycle Stand—KSCS1120/750-CI	48mm	870mm	1120mm	750mm
Kent Sheffield Cycle Stand—KSCS1120/750-CI	48mm	1000mm	1250mm	750mm
Kent Sheffield Cycle Stand—KSCS1120/750-CI	48mm	1000mm	1250mm	1000mm

Sheffield Cycle Stand— Surface Mounted

The Cast in version of these bollards are supplied with baseplates for securing the stands to the ground level.

For installation details see page 7



Product Code	Diameter	Height	Width
Kent Sheffield Cycle Stand—KSCS870/750-SM	48mm	870mm	750mm
Kent Sheffield Cycle Stand—KSCS1000/750-SM	48mm	1000mm	750mm
Kent Sheffield Cycle Stand—KSCS1000/1000-SM	48mm	1000mm	1000mm

Add-ons**Tapping Bar**

A Flat plate tapping bar can be added to these cycle stands as an aid to the visual impaired. This tapping bar can also be branded with logos or advertising as required.

**Toast Rack**

Sheffield Cycle stands commonly spaced at 750-1000mm are fully welded to a 30mm high U-shaped bar which is then fixed to a concrete pad as one unit.

**Stick on Reflective Strips**

Reflective strips provide enhanced visibility in poor lighting conditions and assists with the detection of the cycle stands for vehicles. The strips are typically supplied as 15mm or 25mm wide however variations are also available. These can also be supplied in a range of colours.



Specification

This product is associated with the following clauses:

Q50 Site/street furniture/equipment
210 CYCLE STANDS

Product Specification:

Kent Sheffield Cycle Stand - KSCS1000

Manufacturer: Kent Stainless

Website: www.kentstainless.com

Email: info@kentstainless.com

Tel: +353 (0) 53 914 3216

Fax: +353 53 914 1802

UK Freephone: 0800 376 8377

Address: Ardcavan, Co Wexford, Y35 CRW2, Ireland

- **Product Ref:** Kent Sheffield Cycle Stand - KSCS1120/750-CI
- **Install Type:** Cast In/ Surface mounted baseplate / Sub surface Baseplate
- **Material:** Grade 316L Stainless steel (1.4401) / Grade 304 Stainless steel (1.4301)
- **Finish:** Satin 320 Grit polished / Bead blasted/ powder-coated
- **Size:** Height (above GL): 750mm / 1000mm
Width: 750mm / 1000mm
Diameter: 48mm, 2mm thick
- **Extras:** Tapping Bar / Toast Rack / Reflective Tape



Recommended Installation Methods

Cast In:

Remove pavement and excavate 2 holes to minimum dimensions of L150 x W150 x D350mm.

Position your stand in the correct position ensuring correct height and then prop the stand securely.

Fill the hole with concrete up to the level of the underside of the pavement ensuring a good smooth surface finish.

Remove props, replace the paving slabs, and ensure that they are well bedded in.

Surface Mounted (Ground Level Baseplate):

Ensure that the surface to which the stand is mounted is sufficiently strong.

Position the stand in the correct location. Mark the holes and drill into the surface.

Place the stand directly over the holes and then fix the stand to the surface using M12 bolts.

Sub-Surface Baseplate

Cast 2 foundations 300mm with minimum dimensions of L150 x W150 x D350mm below the surface.

Once concrete is set follow steps 1-3 as per flange detail above.

Fill hole with grout and replace slabs to finish of stand



Maintenance of Stainless Steel

Clean the stainless steel components using warm water with a mild detergent with a non-abrasive cloth or sponge. Heavier stains may require the use of a nylon-scouring pad or a stainless steel cleaner.

To remove paint or graffiti use a cloth and Alkaline or solvent paint strippers according to type of paint. In the case of a bead blasted finish, where abrasive cleaning is required, always use a random circular rubbing action with a cloth.

In the case of brushed finishes the surface consists of uniform fine 'scratches' running in one direction so where abrasive cleaning is required always use a straight back and forward rubbing action in the direction of the grain using soap and warm water.

Rust spots or 'tea stains' can occur on the surface of the material, these are normally caused by contamination from ordinary mild steel, particularly in areas where construction work has been undertaken. Such stains can be removed using Rust Remover 410.

In cases where the surface is severely stained because of severe environmental conditions or scratched due to misuse, it may still be possible to restore the original finish using chemicals such as Oxalic Acid solution. There are many stainless steel polishes available to enhance the surface finish.

We recommend Mister Stainless Ltd. as a provider for stainless steel cleaning products.



Installed Projects

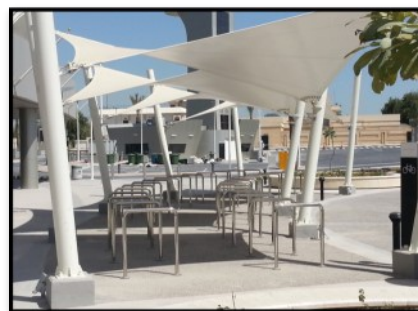
TU Dublin - Grangegorman, Dublin, Ireland
1000x1000mm cast in cycle stands with 48mm diameter



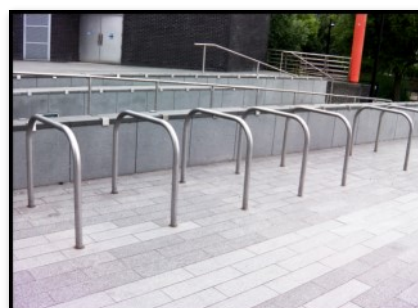
Garda Headquarters Wexford—Wexford, Ireland
1000x1000mm cast in cycle stands with 48mm diameter



Al Saad Stadium— Doha, Qatar
1120x750mm cast in cycle stands with 48mm diameter.



Canada Water—London, UK
1000x1000mm cast in cycle stands with a 48mm diameter



Testimonials

PARSONS

Parsons International Limited
P.O. Box 2091, Doha, Qatar • Tel: (+974) 4405-6444 • Fax: (+974) 4437-7434 • www.parsons.com

Kent Stainless
Arklow, Wexford
Ireland 5 January 2012

Attention : Mr. Shane Curtis & Michael Harley
Project : Lussail Construction Package 1 - CPI
Subject : CPI, Kent Stainless, Lussail City, Qatar

Dear Shane & Michael,

I am writing to express my thanks for the work delivered by Kent Stainless to the Lussail Project in Doha. Your willingness to work with the client, designers and contractors to finalise the specialist detailing, produce the shop drawings and samples has been second to none and has added significant value to the project.

The in-house engineering completed by Kent Stainless and the knowledge and advice given to finalise the design was outstanding. All the products delivered to date have been fully compliant and of the highest quality.

Finally, your frequent presence on site and customer focus has enabled this technically difficult package of works to be finalised in the shortest possible time.

We hope to see you again on future projects.

Yours Sincerely

Patrick McCormack
Parsons CPI

"The In-house engineering completed by Kent Stainless and the Knowledge and advice given to finalise the design was outstanding"

- Parsons

SKANSKA

For the attention of: Michael Hurley

Kent Stainless
Arklow
Wexford
Ireland

Our ref: MW/002/02012
Your ref:

29 March 2012

Dear Michael,

Ref: Leichworth Garden City, Manholes, Grilles, Drainage & Tree Pit Frames

With reference to Leichworth Garden City, we were delighted to work on such a prestigious award winning scheme. The choice of subcontractor and suppliers was crucial to us delivering such a high standard & Kent Stainless were instrumental in this.

As with all our projects during the last 5 years Kent delivered promptly and with the right quality - thanks for your help & keep up the good work.

The client and the main contractor both were delighted with the quality of the work supplied by Kent Stainless. You showed great flexibility and your quality was right first time again.

Yours faithfully,

for and on behalf of
Skanska Infrastructure Services

Matt Wincott

Skanska Construction UK Ltd T/A
Skanska Infrastructure Services
Mail
Maple Cross House
Dunham Way
Maple Cross
Ratcliffe-on-Soar
Nottingham NG12 5DF
Phone +44 (0)1823 776668
Fax +44 (0)1823 425593
Web www.skanska.co.uk
Reg. In England
Reg. No. 121458
Registered Office: Maple Cross House,
Dunham Way, Maple Cross, Ratcliffe-on-Soar,
Nottinghamshire, NG12 5DF.

"The client and the main contractor both were delighted with the quality of the work supplied by Kent Stainless"

- Skanska



DIRECTOR OF SERVICES
CORPORATE AFFAIRS & ROADS
ADDW

15th January 2010

Mr. Stephen Roche,
Kent Stainless,
Arklow,
Wexford,
Ireland.

RE: Wexford Main Street Regeneration

Dear Stephen,

Thanks for your help with the designs of manholes and gully covers for Wexford Main Street. We invested heavily in the new paving works and to break up the beautiful stone work with solid cast covers would have been a real shame. The solutions you provided with recessed covers in stainless steel with laser engraving blended in perfectly with the look and feel we wanted to portray for the street.

Because of the engineering know-how you provided and flexibility in design, we will certainly return to Kents for further work. We were delighted to find an Irish manufacturer could provide all solutions, and even better a Wexford based engineering firm.

Yours faithfully,


Adrian Doyle,
Director of Services,
Corporate Affairs & Roads

e-mail: adrian.doyle@wexfordcoco.ie
tel: 053 9176400

100 Years of Community Service
Cuid Míne ag soláthar seirbhíse don phobal

"Because of the engineering know-how you provided and flexibility in design, we will certainly return to Kents for further work"

- Wexford County Council



Kent Stainless Ltd

Ardcavan, Wexford, Ireland, Y35 CRW2

TEL NO: +353 53 9143216

UK FREEPHONE: 0800 376 8377

FAX: +353 53 9141802

WEB: www.kentstainless.com

EMAIL: info@kentstainless.com

