



**Kent**  
STAINLESS

07/2023

## Satin Finish 320 Grit Polished



## DESCRIPTION

Kent Satin Finish 320 Grit Polished is a widely used finish, with a fine grain in one direction. It is used on a range of street furniture, cleanroom fittings and sanitary ware in hospitals.

Kent Internal reference is 'KF9' and appended with 320 Grit Satin Polish

In Europe and the UK the standard BS EN10088-2 refers to this polish as '2K'. The term 'Satin Polished' is very widely used. However this can be interpreted a number of ways and is not enough for your specifications for high end projects.

In the USA the standard ASTM refer to this as a No. 6 Finish

Specifying an Ra of less than 0.5 microns (aka  $0.5\mu\text{m}$ ) will mean the surface roughness is very fine and so there are less crevices for contamination to adhere to

Below are examples of products and projects of where this finish has been applied.

**Specify:** "Satin Finish 320 Grit Polished with an Ra of less than 0.5 microns".



Leatherhead Cycle Stands—Leatherhead, UK



Sheffield Cycle Stands—Battersea, London UK



# STAINLESS STEEL FINISHES

Satin Finish 320 Grit Polished

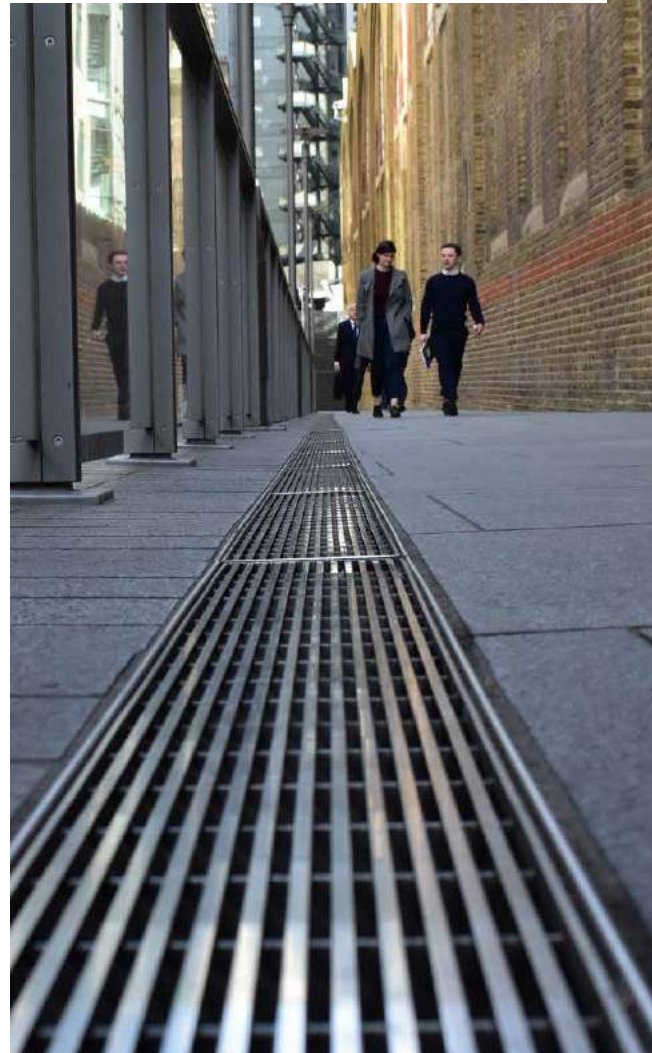
Rhomboid Tree Grille—International Quarter, London



Sheffield Cycle Stands—Vista, Batter-



Pedestrian Heel mesh Drain Grating—5 Broadgate, London UK



2 Tone Cycle Stands—Shepherd's Bush  
(top is satin finish)

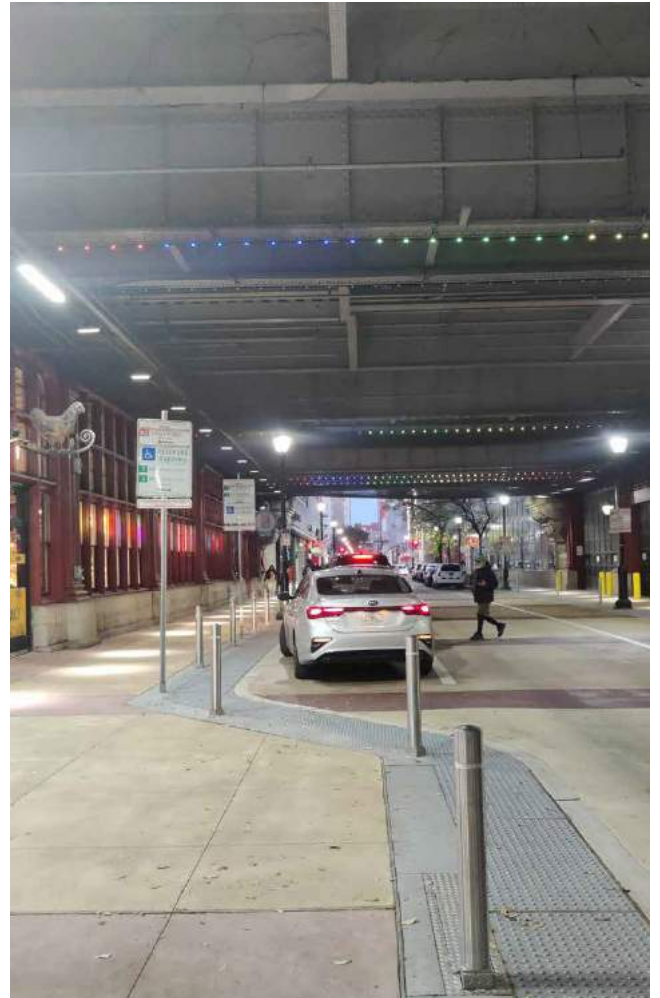


# STAINLESS STEEL FINISHES

Satin Finish 320 Grit Polished



Heelproof Ventilation Grilles—100 Liverpool St, London



Coffin Bollards—Lakeshore East, Chicago



Coffin Bollards—Waltham Forest



# STAINLESS STEEL FINISHES

Satin Finish 320 Grit Polished

PAS68 Bollards—One Tower Bridge, London



Hidden Lock Sockets Bollards—Aviva Stadium, Dublin



Fold Down Bollards—  
Handyside Park, London

# STAINLESS STEEL FINISHES

Satin Finish 320 Grit Polished



Interactive Wayfinding Information Kiosk—Grangegorman, Dublin



Advertising/RTPI Totems—Luas

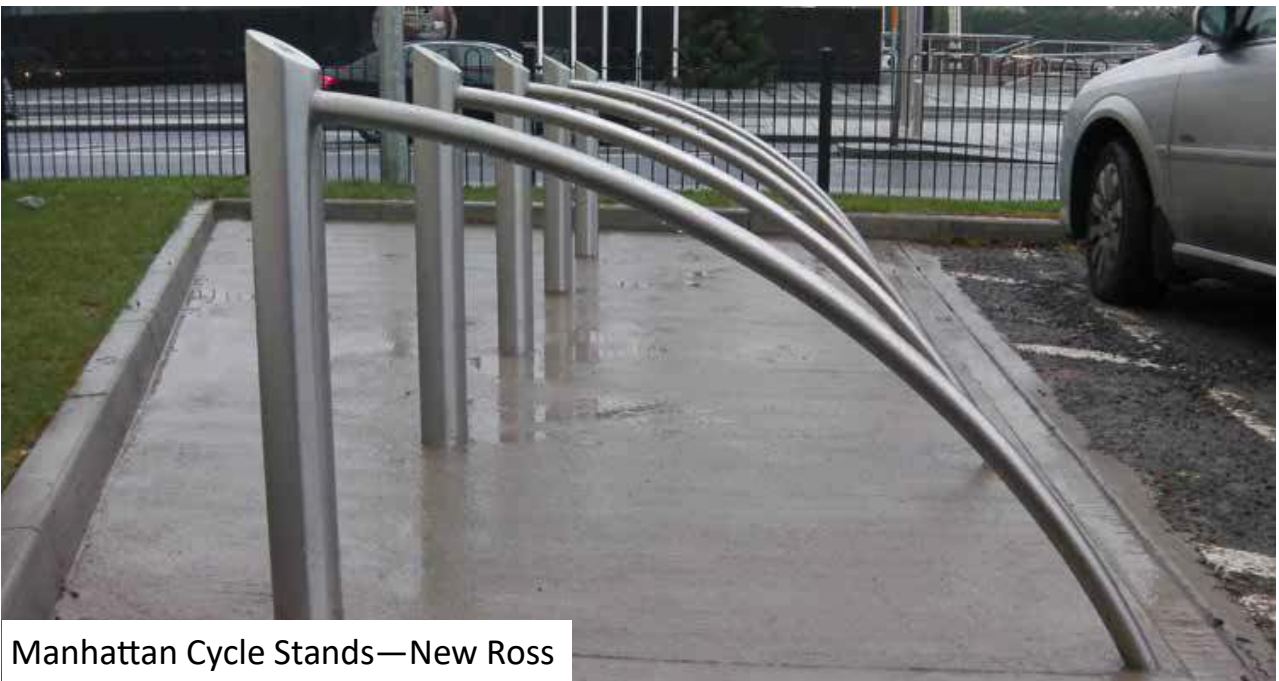
# STAINLESS STEEL FINISHES

Satin Finish 320 Grit Polished

Balu



Wire Rope Balustrade—Luas, Dublin



Manhattan Cycle Stands—New Ross



## STAINLESS STEEL FINISHES

Satin Finish 320 Grit Polished

Typically used on streetfurniture, this finish is also applied to products used in Pharmaceutical, Cleanroom, and Food Factory applications

Wall Guards in Hospital Corridor



Skirting and Tubular Bump Rail—Cork Airport, Ireland



# STAINLESS STEEL FINISHES

Satin Finish 320 Grit Polished



Slotted Drain Covers—Pharmaceutical Factory



Tubular Bump Rail—Cork Airport Ireland

# STAINLESS STEEL FINISHES

Satin Finish 320 Grit Polished



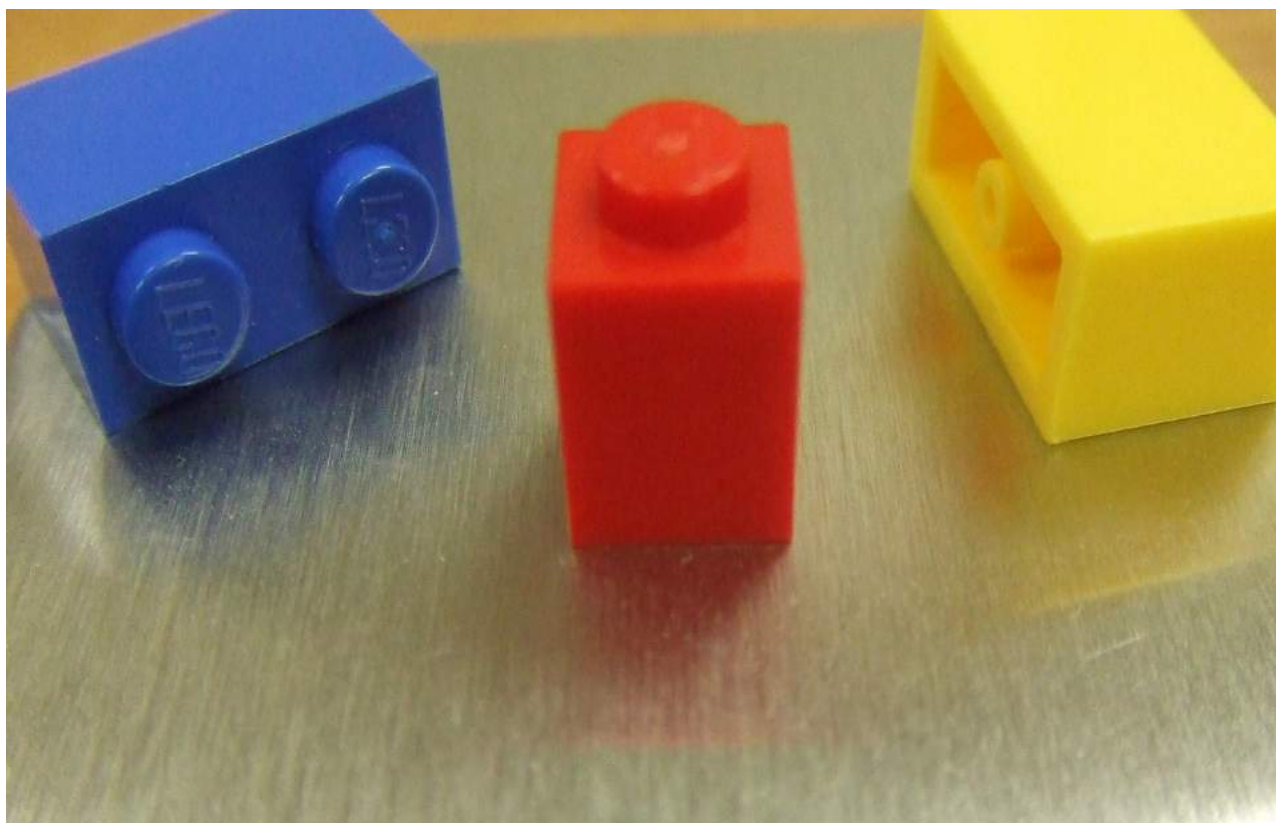
Step Over Benches—Pharma Factory



PPE Dispensers—Pharma Factory

# STAINLESS STEEL FINISHES

Satin Finish 320 Grit Polished



Satin Finish 320 Grit Polished is a Fine Smooth Grain Visible  
with Medium Reflection





# STAINLESS STEEL FINISHES

## Satin Finish 320 Grit Polished

This finish is either bought in pre-polished from the mill, or is recreated manually after fabrication on welded elements of the product

Flat Bed Polishing with 320 Grit Belts



Hand Polishing Welded Parts post fabrication



Wedge Heel Mesh Grating—Education City, Qatar

## Contact us

Phone: **+353 53 914 3216**

UK Freephone: **0800 376 8377**

USA: **781 374 7391**

Email: **[info@kentstainless.com](mailto:info@kentstainless.com)**

Address: **Ardcavan, Wexford, Ireland, Y35 CRW2**

