

Kent Superwide Slot Channel



**KENT SUPERWIDE SLOT CHANNEL (KSSC44/250/110)**

Kent Superwide Slot Channel is manufactured with welded spacer bars giving 3 x 8mm slot opening for areas with frequent pedestrian activity—yet has versions available up to D400 loading to allow for slow moving heavy goods vehicles occasionally traversing the slot. The slot bars at 5mm are a good match aesthetically for projects which have Kent Double Wedge Heelmesh Ventilation grilles covering large Ventilation Chambers nearby.

The 'hemmed edge' on the outside edges also add to it's strength.

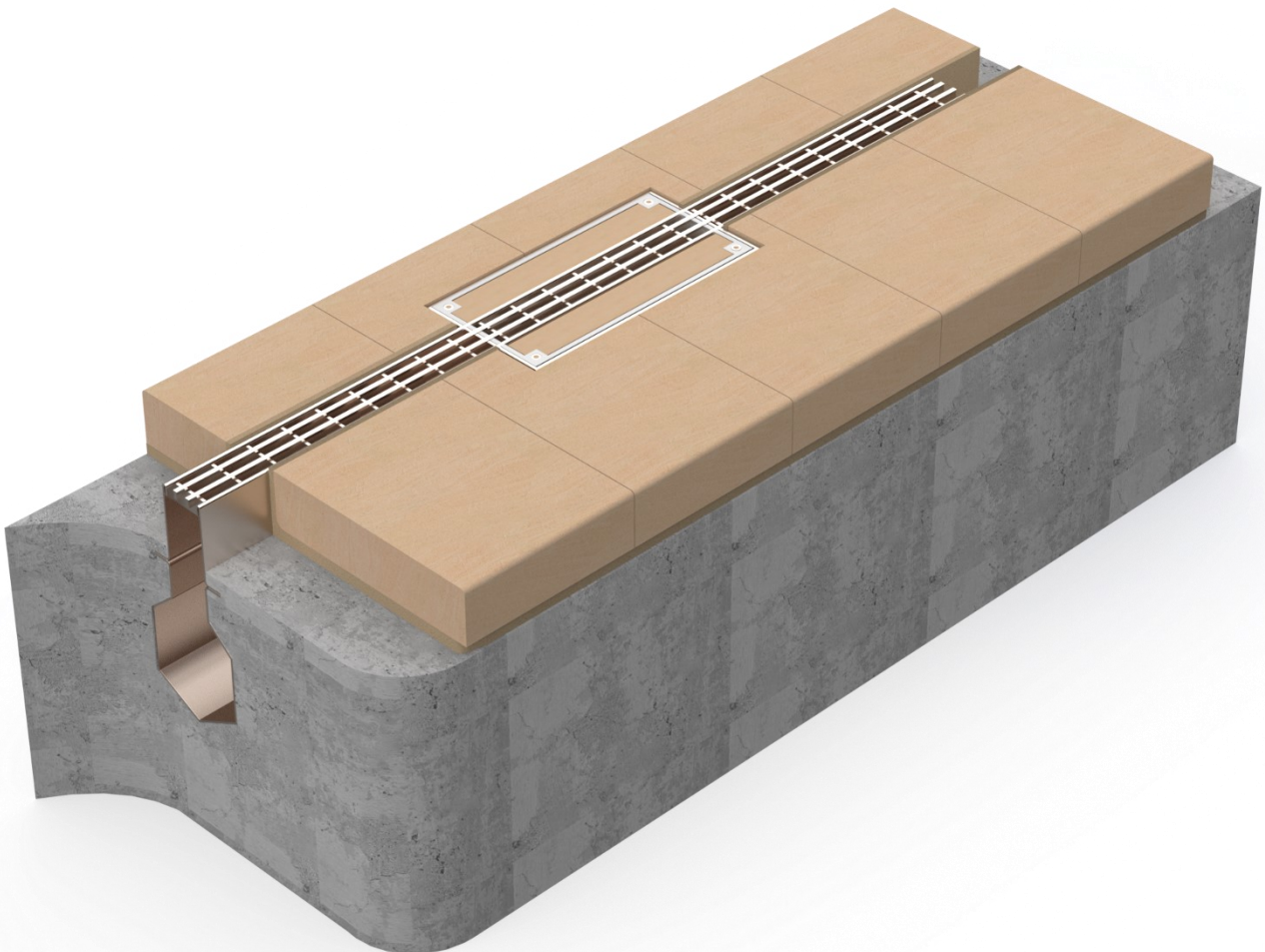
The 110mm bottom outlet is rodded by removing the 300mm x 150mm x 80mm deep access cover.

Customised cover sizes to match paving available

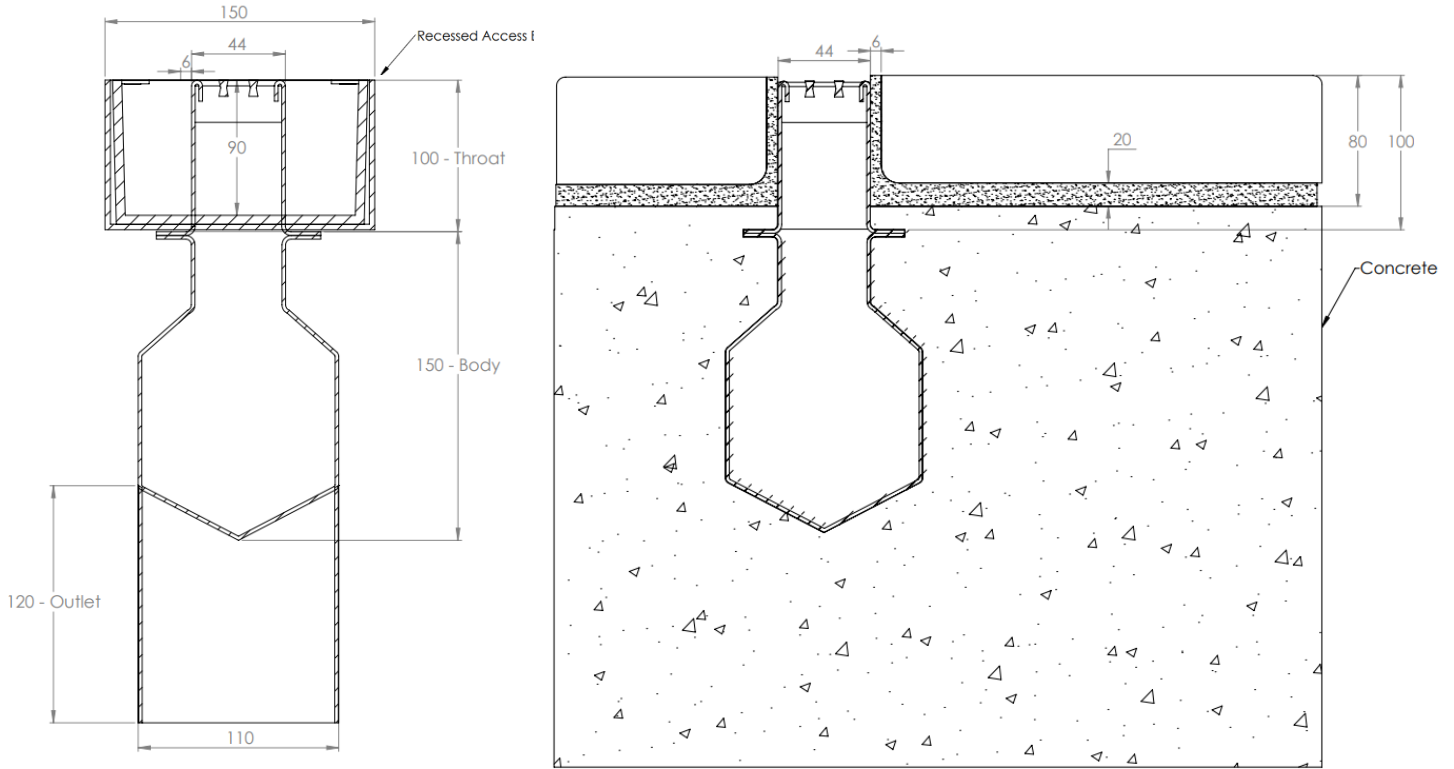
Customised widths and depths with 160mm outlets available for higher capacity requirements

Features:

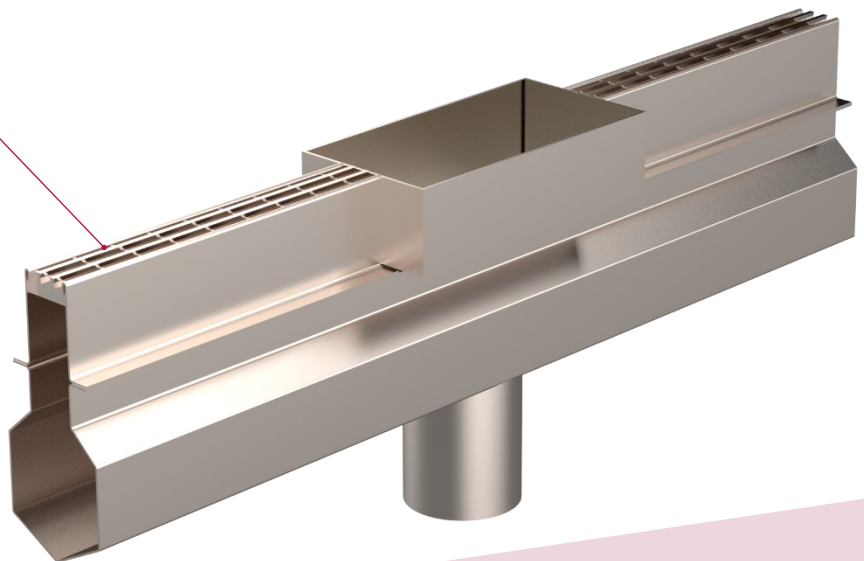
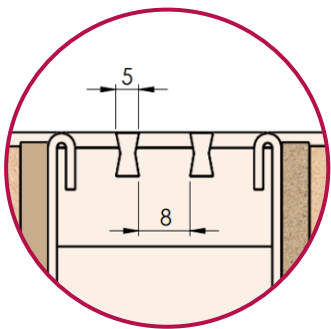
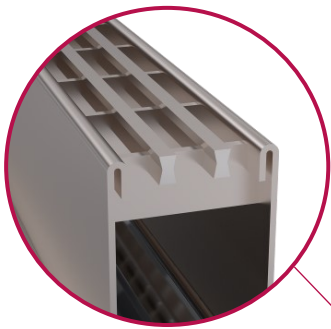
- B125 loading as standard- C250 & D400 versions also available
- Available in either Grade 304 or Grade 316 Stainless steel
- 100mm Throat height
- 44mm wide to outside edge
- 8mm slots with 5mm bars
- 44 ton truck slow moving load available on request



KENT SUPERWIDE SLOT CHANNEL (KSSC44/250/110)



Product Code	Height	Width	Slot Width
Kent KSSC44/250/110	250	110	44 / 8 X 3



KENT SUPERWIDE SLOT CHANNEL (KSSC44/250/110)

Choose your steel:

- Grade 304 Stainless steel
- Grade 316 Stainless steel

Channel Dims

- 250mm x 110mm (for 110mm outlet)
- 250mm x 160mm (for 160mm outlet)
- custom

Specify:

Kent KSSC44/250/110; Grade 316 SS; 250mm overall height, 110mm width;
 44mm slot c/w 2 central bars giving 3nr 8mm opes; FACTA B Loading; 300mm x 150mm x 80mm recessed outlet box to take 60mm paving

Customise your Loading:

- FACTA B
- FACTA C
- FACTA D

Customise your outlet and access boxes:

- 300mm x 150mm x 80mm
- Or custom size

Options	FACTA Class	EN124 Class	Slow Moving Wheel Loads	Kent Safety Test
Grade 304 Stainless Steel	B	B125	5T	10.1T
Grade 316 Stainless Steel	C	C250	6.5T	13.2T
	D	D400	11T	22T



Maintenance of Stainless Steel

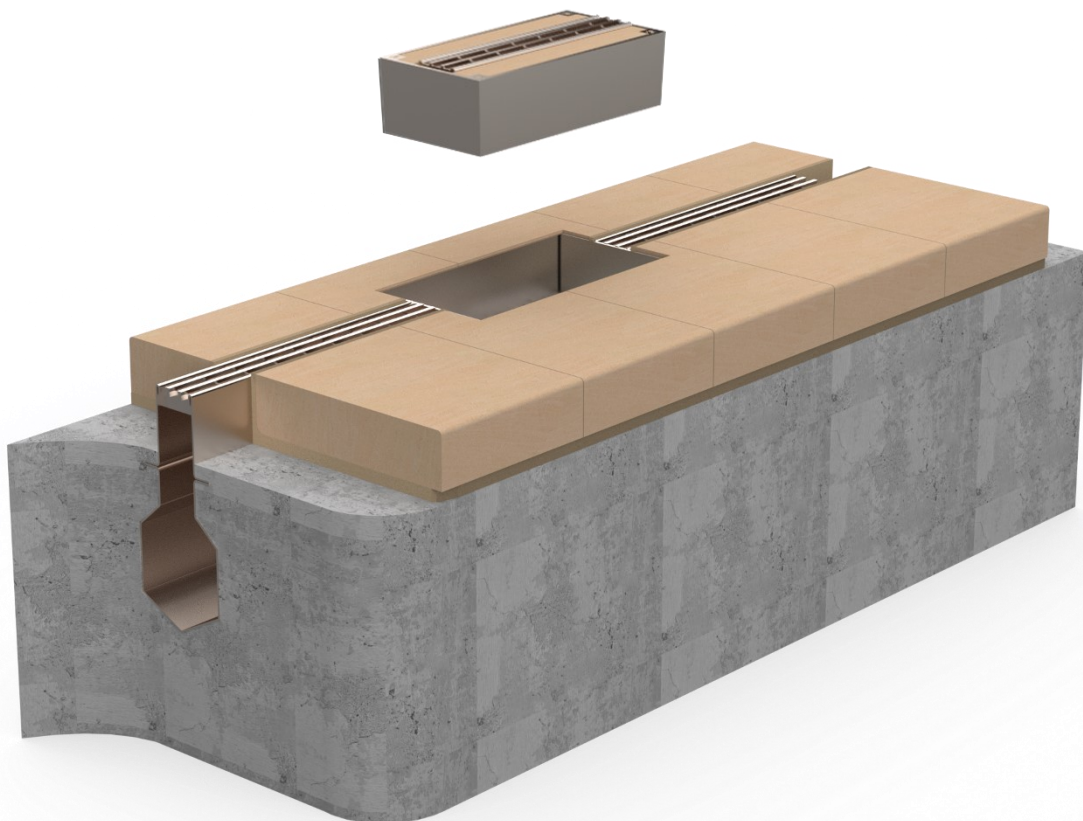
Clean the stainless steel components using warm water with a mild detergent with a non-abrasive cloth or sponge. Heavier stains may require the use of a nylon-scouring pad or a stainless steel cleaner.

To remove paint or graffiti use a cloth and Alkaline or solvent paint strippers according to type of paint. In the case of a bead blasted finish, where abrasive cleaning is required, always use a random circular rubbing action with a cloth.

In the case of brushed finishes the surface consists of uniform fine 'scratches' running in one direction so where abrasive cleaning is required always use a straight back and forward rubbing action in the direction of the grain using soap and warm water.

Rust spots or 'tea stains' can occur on the surface of the material, these are normally caused by contamination from ordinary mild steel, particularly in areas where construction work has been undertaken. Such stains can be removed using Rust Remover 410.

In cases where the surface is severely stained because of severe environmental conditions or scratched due to misuse, it may still be possible to restore the original finish using chemicals such as Oxalic Acid solution. There are many stainless steel polishes available to enhance the surface finish.





Capitol Dock, Dublin—KSSC44/250/110 with
300mm x 1590mm Recessed Access Box

Kent Stainless Ltd

Ardcavan, Wexford, Ireland, Y35 CRW2

TEL NO: +353 53 9143216

UK FREEPHONE: 0800 376 8377

USA LOCAL: 781 374 7391

WEB: www.kentstainless.com

EMAIL: info@kentstainless.com

