



Waste Lift Station for Single Use Bioreactor

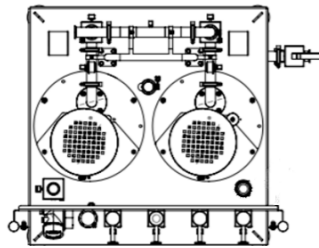
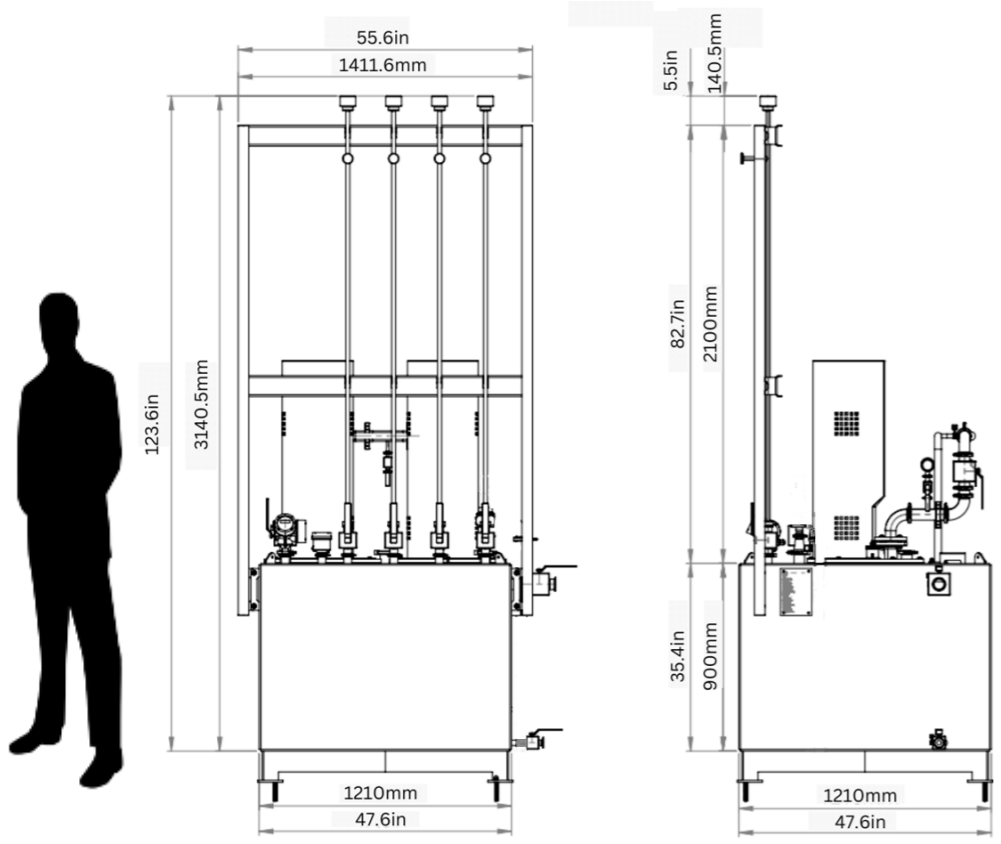
INDUSTRIES
 — BioPharma
 — Pharmaceutical

This Utility Waste Sump was manufactured in 2022 for a major Biopharmaceutical factory site. It was installed above ground in a cleanroom, all made from polished stainless steel and received process waste from a single use bioreactor. It was pressurised to 1.5 bar and contains a pressure release valve

Notably all instrumentation was part of the full service package. This included Motors (with Motor Housings), Level Transmitters and Level Switches, an Internal Dip Tube, a Pressure Indicator and various 1.5" - 2" Ferrule Nozzles connected to Ball Valves.

The tall frame at the rear allowed mounting of hose assembly and clamps forming single use air breaks.

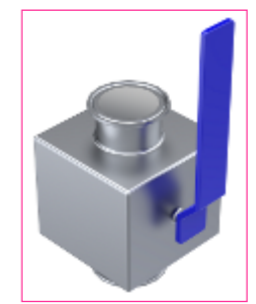
This tank measured 1200mm x 1200mm x 900mm without the support frame and has a 1000 litre capacity.



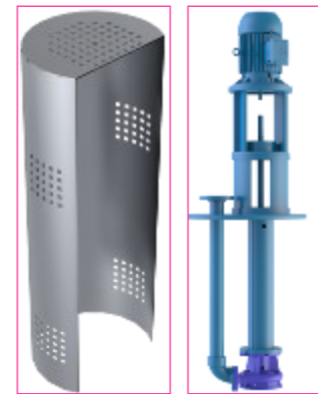
Height	Width	Length	Weight	Volume
900mm	1210mm	1210mm	1,000kg	1,000 L
36 in	48 in	48 in	2,200lb	232 US Gallon



2" and 1" Ferrule Triclamp Nozzles with Ball Valves

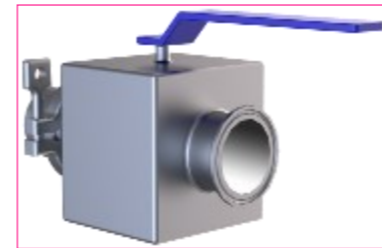


1nr Level Transmitter for pump set parts

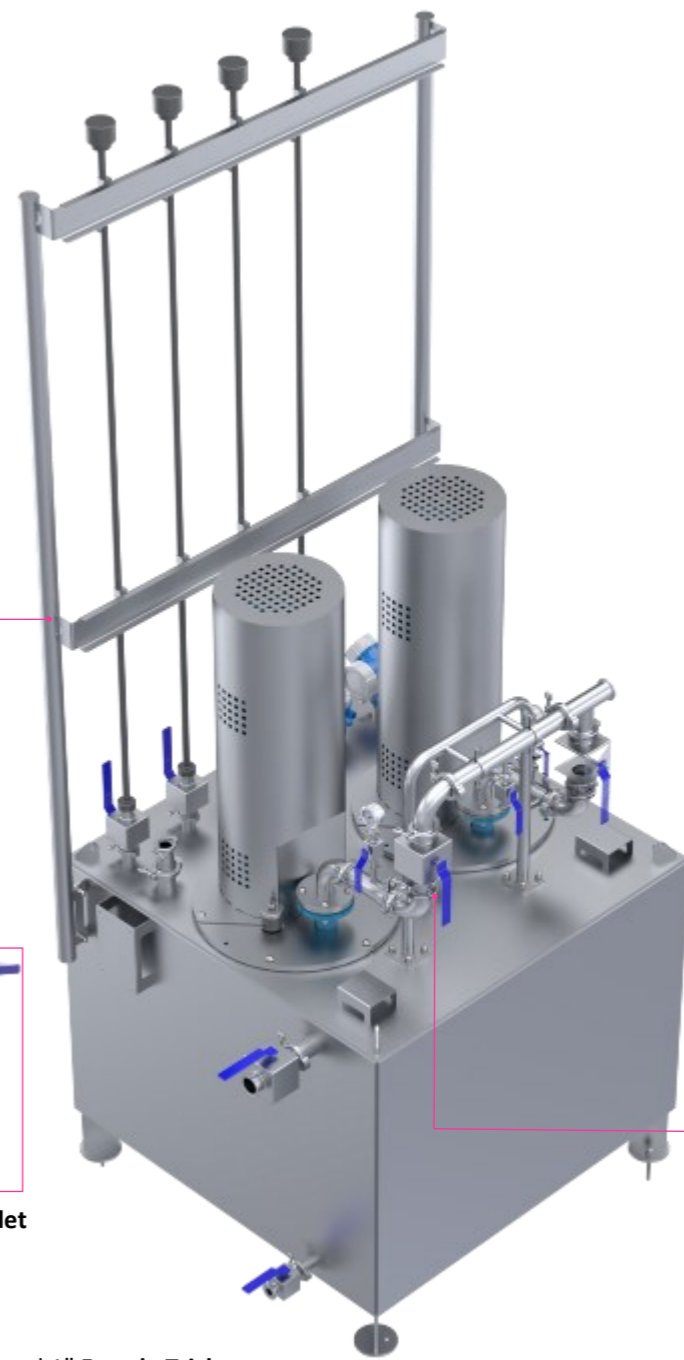


Motor Shroud & Vertical Sump Pump

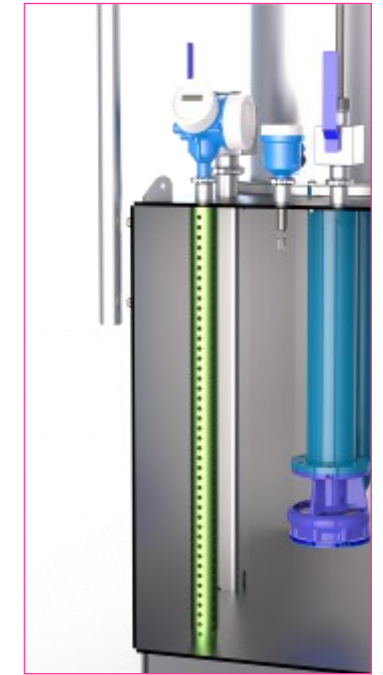
Air Break Frame included to support Air Break Pipework by others. 3000mm to support frame top



6nr DN40 Triclamp Ferrule Inlet Connections with Ball Valves



2" and 1" Ferrule Triclamp Nozzles with Ball Valves



Level Transmitter protected by Perforated Pipe



Pressure Indicator, Check Valves, Ball Valves