



# Double Contained Sump with Recessed Hinged Access Cover

Kent Stainless manufactured this Double Contained Sump in 2022 for a major Pharmaceutical client.

The full body has a secondary outer containment liner and SCH40 pipe is used for the inner containment pipes with SCH10 pipe being used for outer containment.

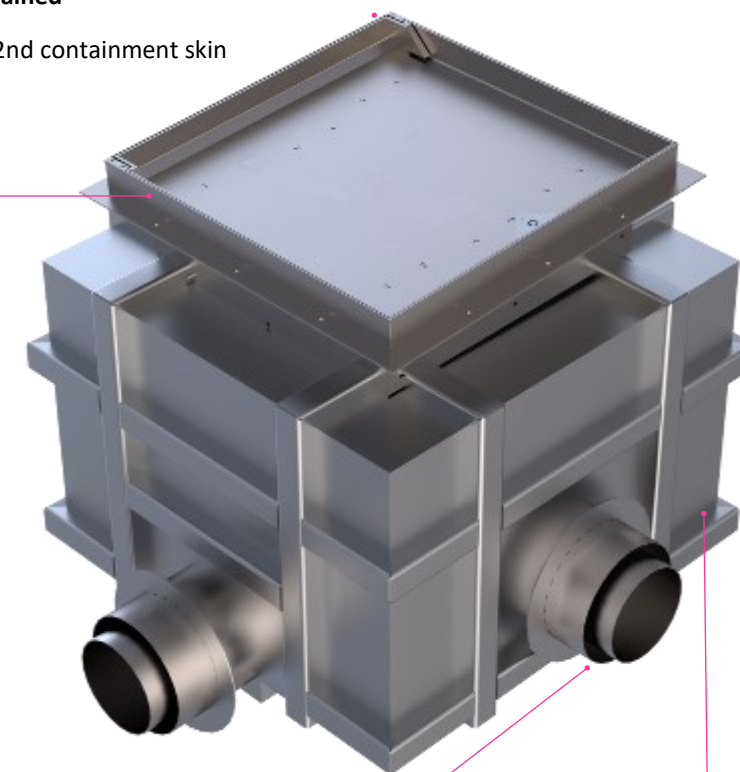
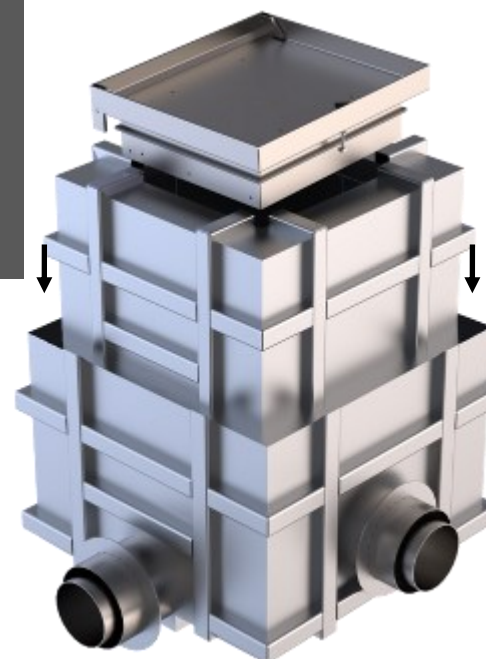
This project had a sloped floor that requires the neck riser to take account for a 1:20 fall. The ground level access cover was hinged lift assist, 1200mm square and recessed 105mm deep to infill with matching floor filling.

This is a 1500mm x 1500mm x 1200mm deep sump. A test port on the outer containment pipes can have pressurised air connected and a leak detection outlet on the underside of these pipes will show any leak from the inner pipe that may be contained by the outer secondary containment pipe-work.

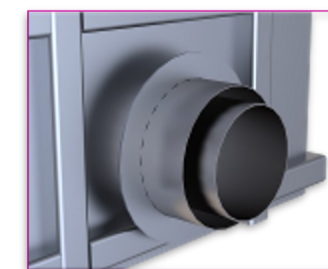
**INDUSTRIES**  
— BioPharma  
— Pharmaceutical

Double Contained

Inner Tank fully welded to 2nd containment skin



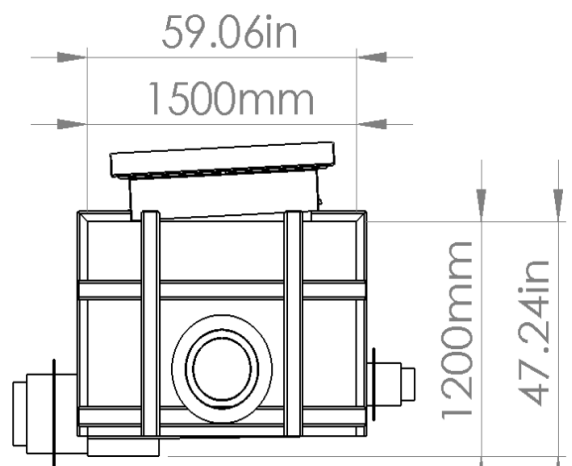
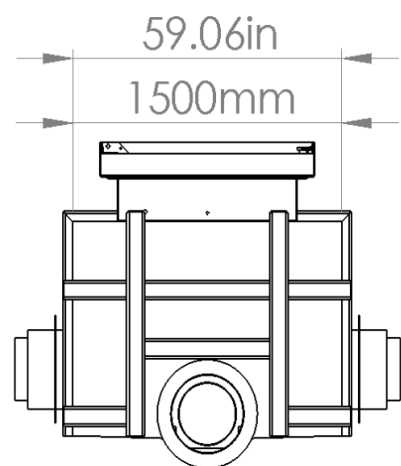
Sloped Neck Riser to suit individual fall in finished floor (1:20 slope shown) with 1200mm square Lift Assist Recessed Manhole



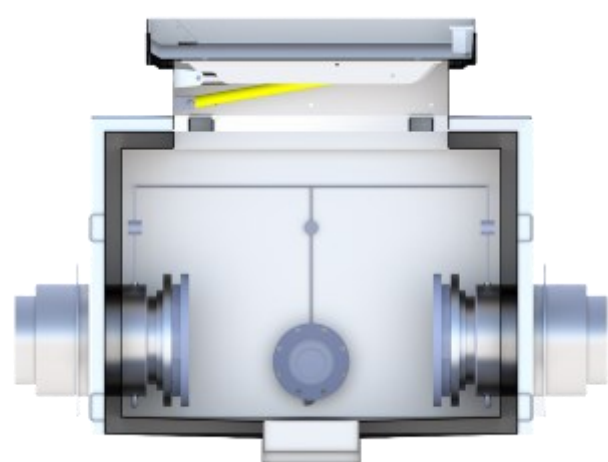
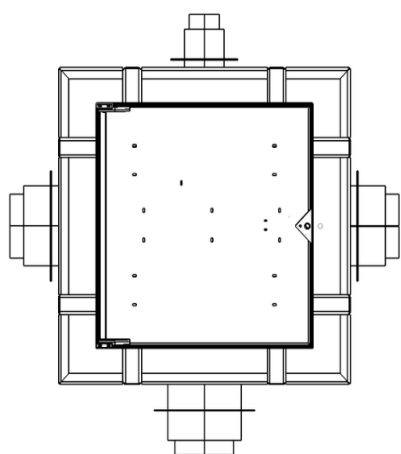
Double Contained Outlet 12" SCH40 / 16" SCH10



External Reinforcement of Tank Body



Non Return Valves on 3 inlet pipes



Inlet Pipes 230mm above Outlet Invert



Leak Detection fitting on top and bottom of inlet pipes

