

The Kent Floor Tray KFT600/600/KV215/110 and family of trays are designed for use primarily in Commercial Kitchens like those seen in hotels, hospitals, stadia, large corporate offices. These places have a high volume of food preparation, have light to medium traffic at ground level and need wide pans to accept tipping, pouring, and splashes. They are low cost and have a short lead time.

They are generally supplied with open mesh grating. This can be manufactured with Single Anti Slip profile bars as an option.

In most cases a KV215 gully with filter basket is welded to the underside. To increase flow rate move this to a KV315/160 gully, or for upper floors move to a simple trapped 110mm pipe outlet to help with less coring of the floor..

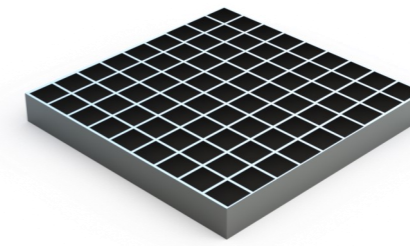
110mm or 160mm outlet is required, but this can easily be substituted for a 4" or 6" SCH10 outlet pipe. It is trapped as standard with the Kent Bell Trap.

Features:

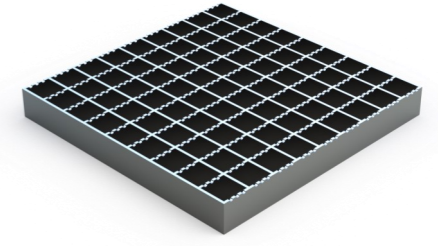
- Grade 304 (1.4301) or 316 (1.4401) Stainless Steel to BS EN 10088
- Low Cost
- Short lead time
- Usable in both light and medium duty areas
- Suitable for commercial kitchen projects
- Pre-sloped with 1:150 fall

GRATING OPTIONS

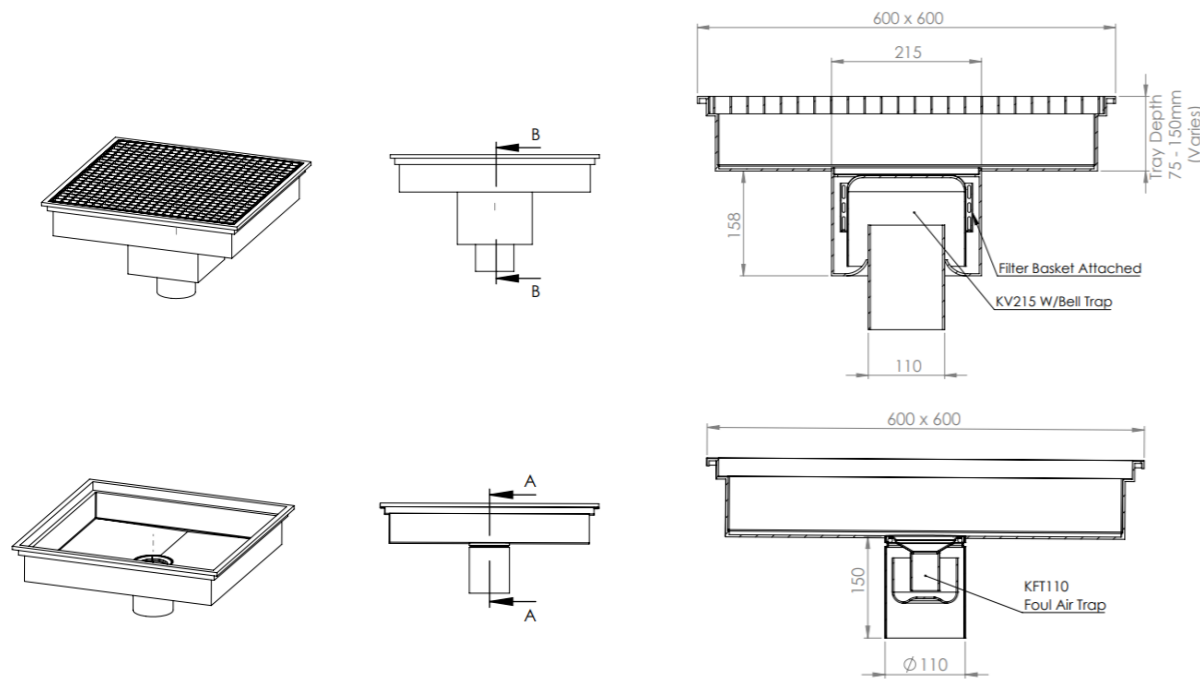
COMMERCIAL KITCHENS



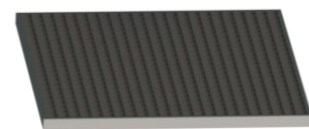
Mesh Grate



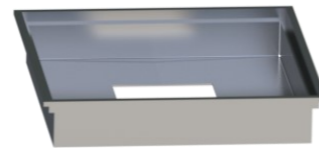
Anti Slip Mesh Grate



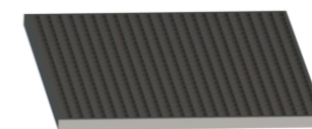
KFT600/600/KV215/110



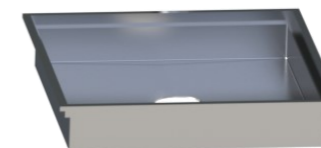
Bell Trap for high flow projects with optional integrated filter basket



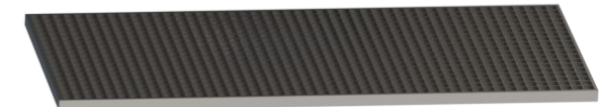
KFT600/600/110



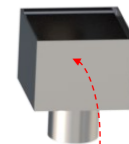
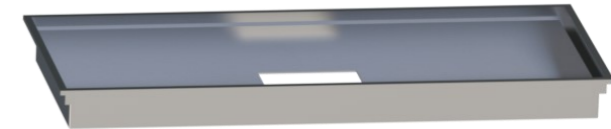
KFT110 Bottle Trap for lower flow projects .



KFT2000/600/KV215/110



Bell Trap for high flow projects with optional integrated filter basket



Product Code	Height	Length	Width	Outlet	Flow Rate*	
SQUARE						
KFT450/450/KV215/110	75 - 150	600	600	110	3.94l/s	
KFT600/600/KV215/110	75 - 150	600	600	110	3.94l/s	
KFT600/600/KV315/160	75 - 150	600	600	160	10.20l/s	(high flow floor version)
KFT600/600/KH215/110	75 - 150	600	600	110	4.42l/s	(side outlet version)
KFT600/600/110	75 - 150	600	600	110	1.4l/s	(low flow floor version)
RECTANGULAR						
KFT900/600/KV215/110	75 - 150	900	600	110	3.94l/s	
KFT900/600/KV315/160	75 - 150	900	600	160	10.20l/s	(high flow floor version)
KFT1000/300/KV215/110	75 - 150	1000	300	110	3.94l/s	
KFT1000/500/KV215/110	75 - 150	1000	500	110	3.94l/s	
KFT1200/300/KV215/110	75 - 150	1200	300	110	3.94l/s	

BS EN1253 Loading Class L15 / R50

Our internal gullies can be subjected to very heavy loads but must have the correct heavy duty grating to achieve these loads. Suitable for Restaurants & Commercial Kitchens.

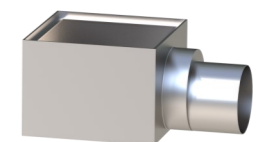
Specify: Kent KFT600/600/KV215/110 trapped floor tray; 600mm x 600mm; grade 304 stainless steel; complete with Mesh grating and filter basket.

Choose the product code from the dimensions table on the left.

(amend underlined words to suit project)



110mm Bottom Outlet Pipe outlet instead of gully for upper floors As option



Side Outlet version available